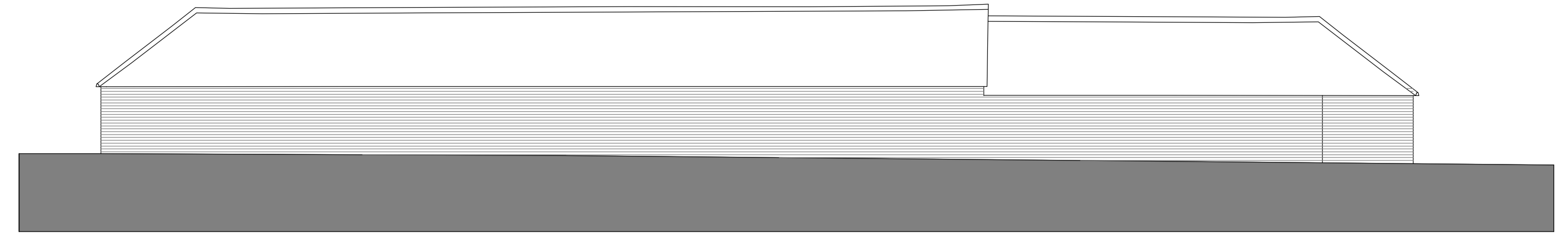
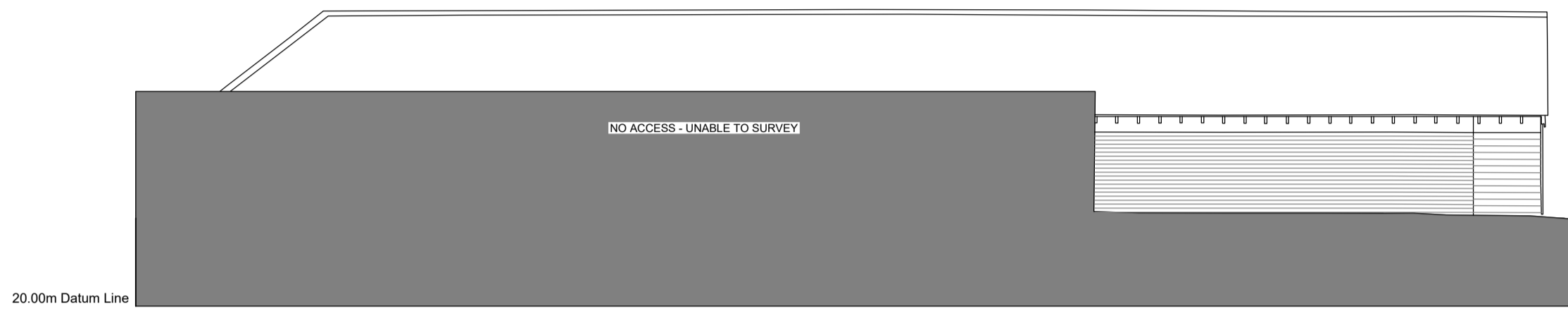


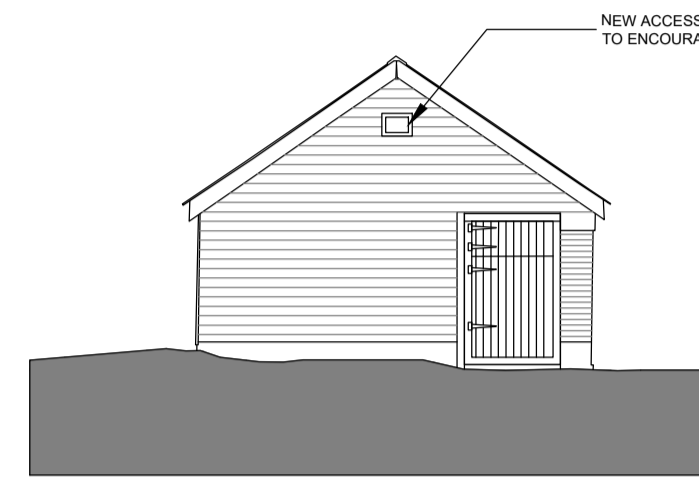
SOUTH ELEVATION OF SOUTH WING



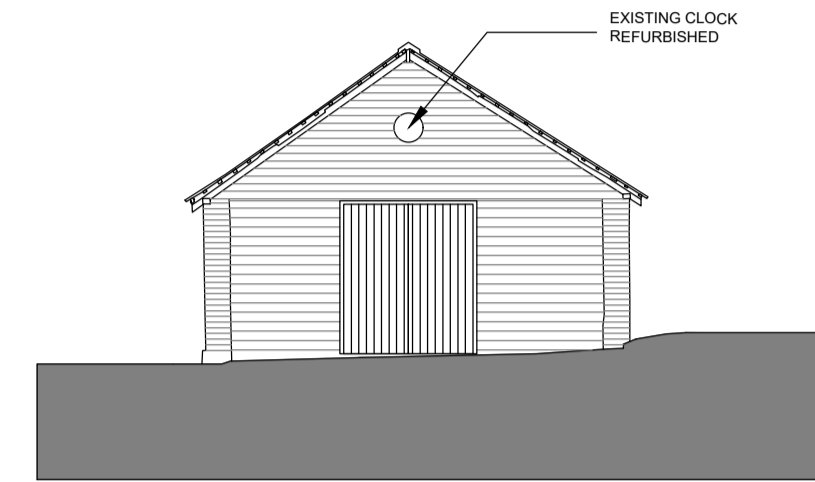
EAST ELEVATION



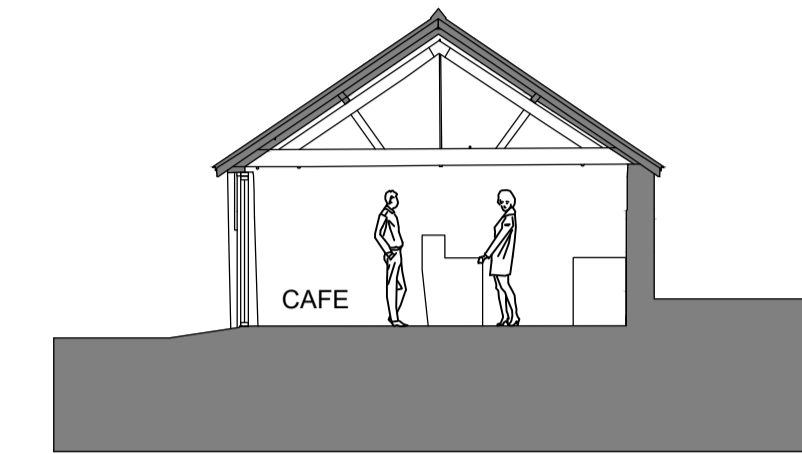
NORTH ELEVATION OF NORTH WING



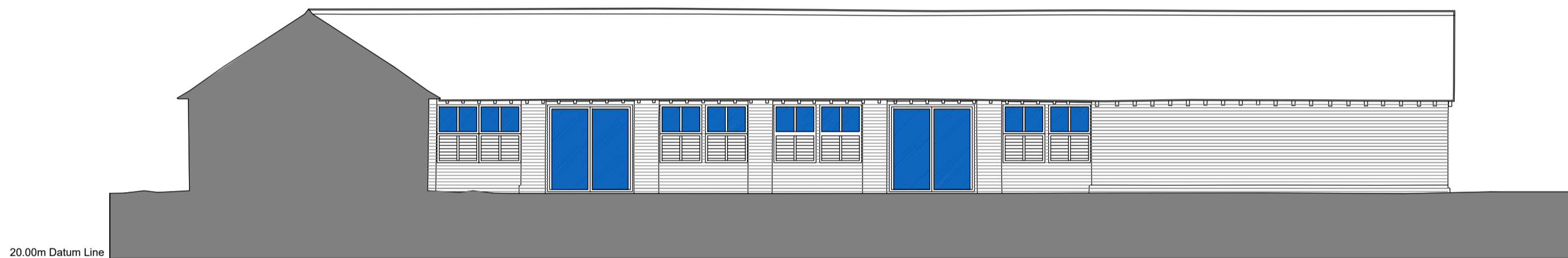
WEST ELEVATION - NORTH WING



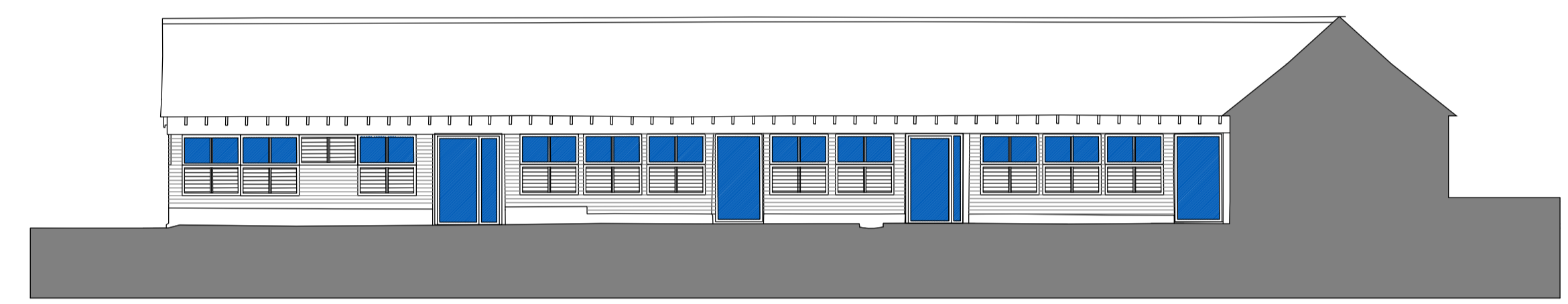
WEST ELEVATION - SOUTH WING



CROSS SECTION A - A / EAST WING



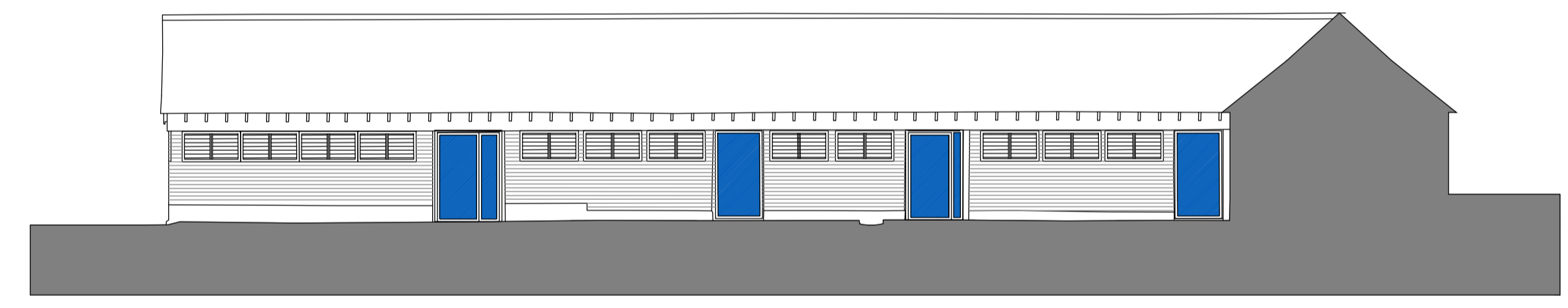
NORTH ELEVATION OF SOUTHERN WING
SHUTTERS OPEN



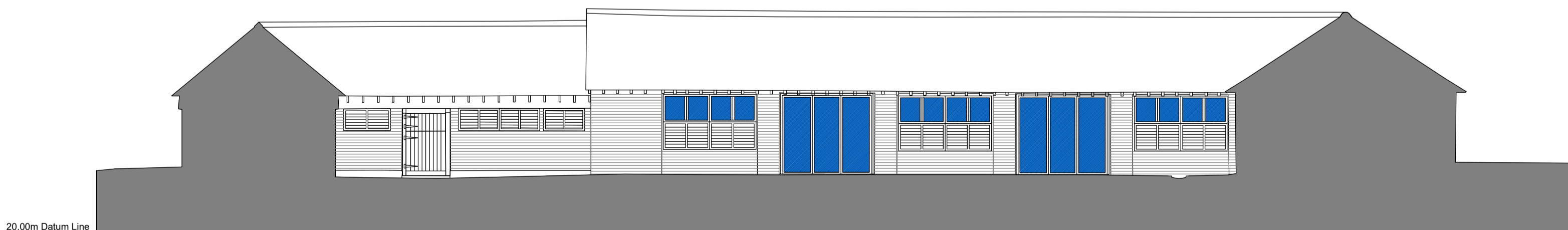
SOUTH ELEVATION - NORTH WING
SHUTTERS OPEN



NORTH ELEVATION OF SOUTHERN WING
SHUTTERS CLOSED

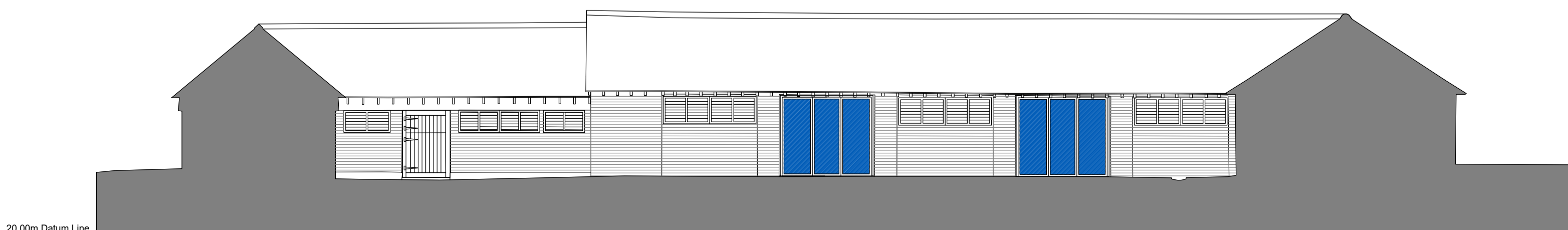


SOUTH ELEVATION - NORTH WING
SHUTTERS CLOSED

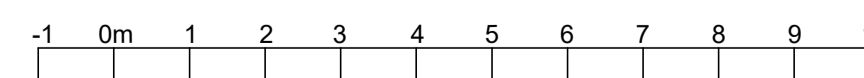


WEST ELEVATION - WITH SHUTTERS DOWN

MATERIALS
 NEW WINDOWS - PAINTED TIMBER
 NEW GLAZED DOORS - PAINTED TIMBER
 DOORS TO GABLE ENDS (STORES AND BAT ZONE) IN SHIPLAP HORIZONTAL TIMBER BOARDING
 NEW SHUTTERS - PAINTED TIMBER
 BRICKWORK - AS EXISTING
 ROOFING SLATES - AS EXISTING
 RWG - AS EXISTING OR REPLACED LIKE FOR LIKE TO MATCH
 NOTE - SHUTTERS TO HINGE UPWARDS TO COVER NEW WINDOWS TO REPLICATE EXISTING



WEST ELEVATION - WITH SHUTTERS RAISED



Rev.	Date	Details	Drawn	Checked
B	26.04.23	South Elev (North Wing) Amended	CPL	CPL
A	21.03.23	Materials Notes Amended	CPL	CPL

Issued for:		PLANNING	
Project/Client:	Project No:		
SOMERLEY ESTATE	2112		
ELLINGHAM FARM COURT	Dwg No:	Rev:	
FARM SHOP	201	B	
Drawing:	Scale:		
PROPOSED ELEVATIONS	1/100 @ A1		
	North:		
	Drawn By:	Date:	
	CPL	08.04.22	
	Checked By:	Date:	
	CPL	08.04.22	

CPL ARCHITECTURE

CHRIS LITTLEMORE BA(Hons) BArch MSc RIBA
 CHARTERED ARCHITECT