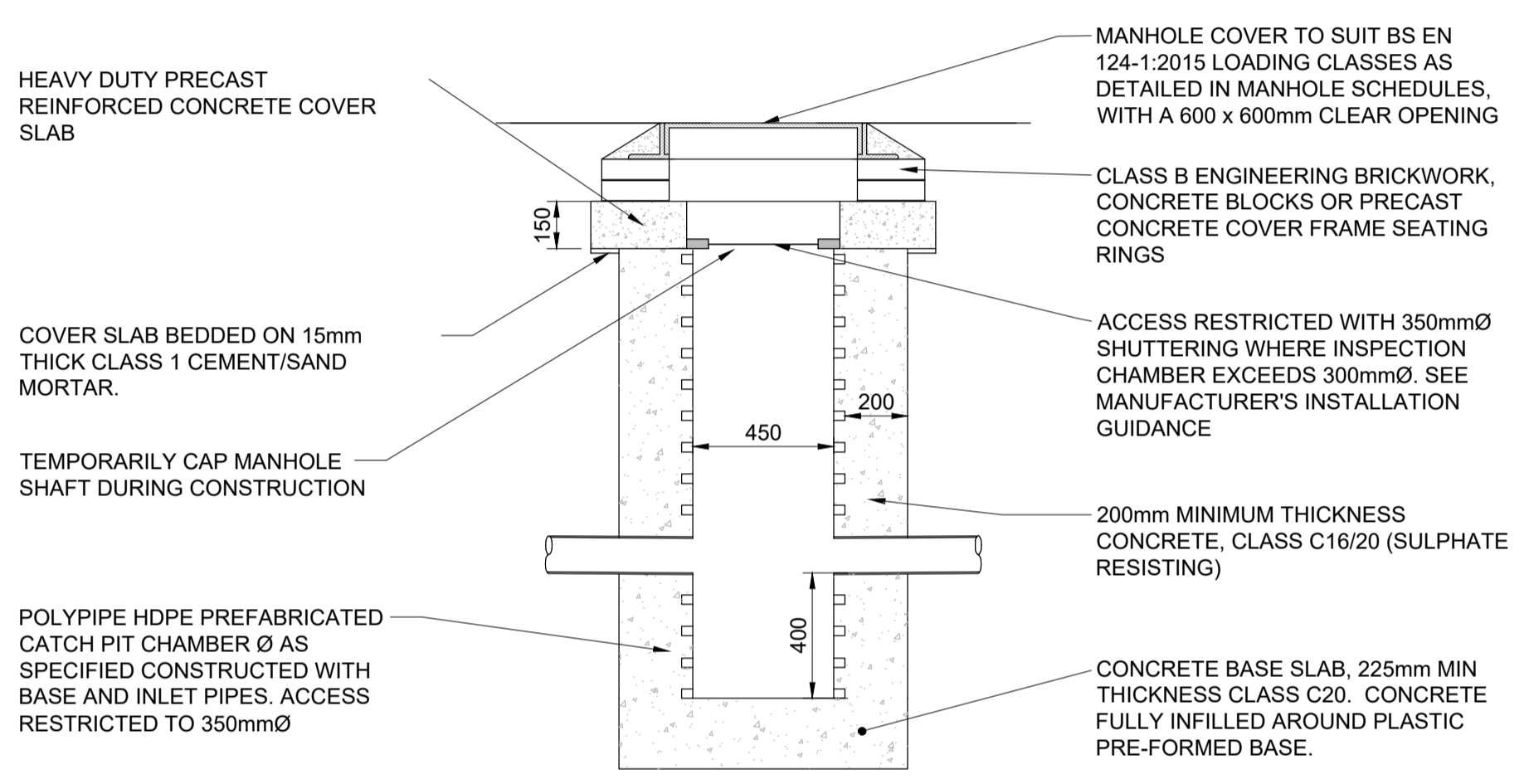
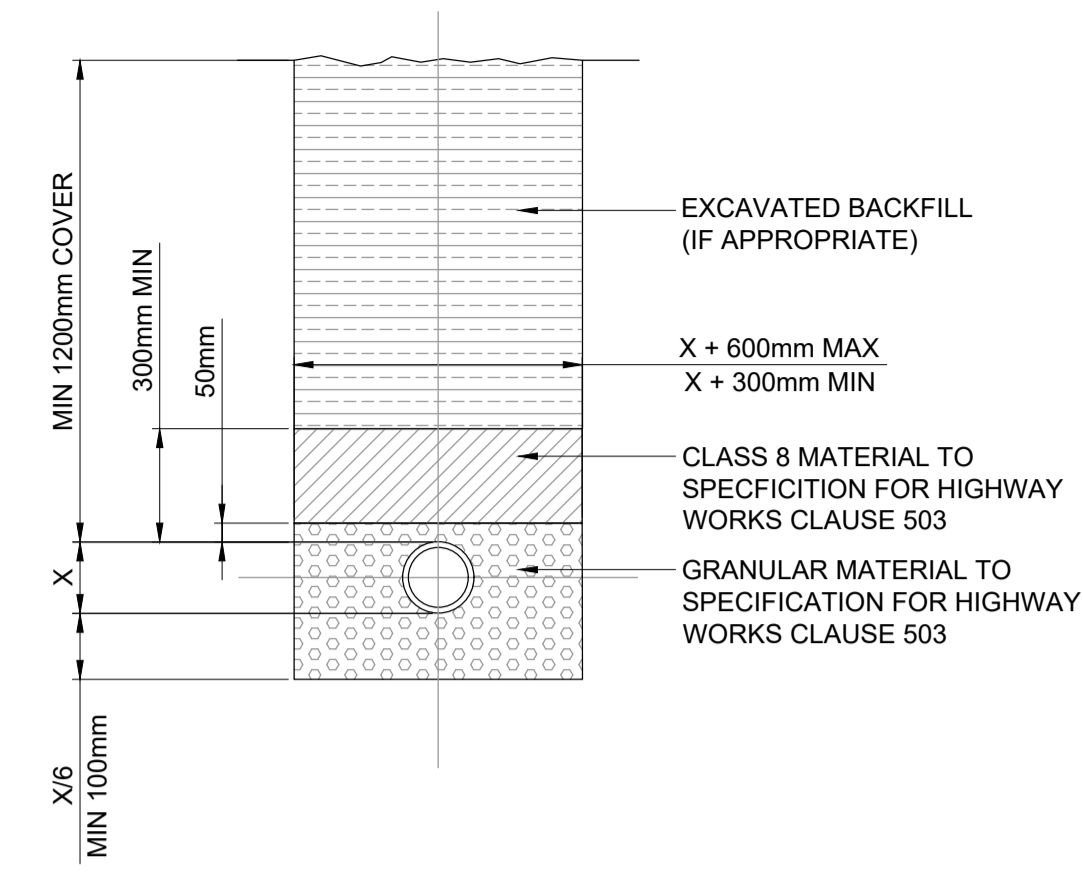


NOTE
 WAVIN REFERENCE:
 315 IC CHAMBER BASE WITH 30NE002 RAISING PIECES TO SUIT (OSA) OR
 450 IC CHAMBER BASE WITH 40NE300 RAISING PIECES TO SUIT (OSA) BOTH WITH PREFORMED 100/110mmØ INLETS TO SUIT.
 600 IC CHAMBER BASE WITH 60NE002 RAISING PIECES TO SUIT (OSA) WITH PREFORMED 300mmØ TO SUIT.

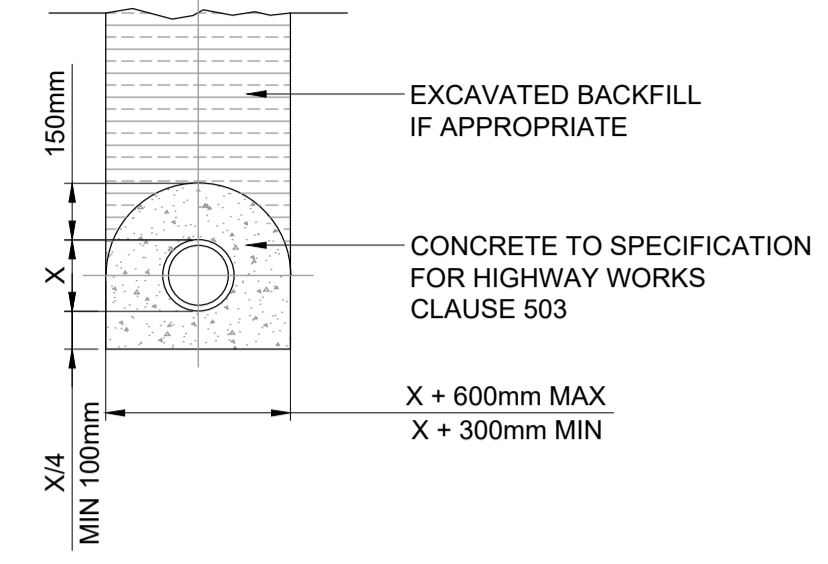
**TYPICAL INSPECTION CHAMBER DETAIL:
 315, 450 & 600mm DIAMETER**
 SCALE 1:20



TYPICAL CATCHPIT DETAIL
 SCALE 1:20



CLASS S BEDDING (PIPES UP TO 600mm)
 NOT TO SCALE



CLASS Z BEDDING (PIPES UP TO 600mm)
 NOT TO SCALE

- GENERAL NOTES:**
1. THE DRAWINGS, DESIGN AND ALL INFORMATION CONTAINED THEREIN ARE THE SOLE COPYRIGHT OF CANHAM CONSULTING LTD AND ANY REPRODUCTION IS FORBIDDEN UNLESS PERMISSION IS OBTAINED IN WRITING.
 2. ALL DRAWINGS SHALL BE READ IN CONJUNCTION WITH ALL RELEVANT CIVIL / STRUCTURAL ENGINEERING DRAWINGS, THE PROJECT SPECIFICATION AND DRAWINGS PRODUCED BY THE ARCHITECTS, SERVICE ENGINEERS AND LANDSCAPE ARCHITECTS.
 3. FOR SETTING OUT OF BUILDINGS REFER TO CHRISTIAN D MOUTNEY DRAWINGS AND DETAILS. FOR SETTING OUT OF HIGHWAYS AND EXTERNAL WORKS REFER TO CANHAM CONSULTING'S DRAWINGS AND DETAILS.
 4. ANY DISCREPANCIES BETWEEN THE INFORMATION GIVEN BY THE ENGINEER, AND THAT PROVIDED BY OTHERS, MUST BE REFERRED TO THE ENGINEER BEFORE THE AFFECTED WORKS PROCEED.
 5. DIMENSIONS MUST NOT BE SCALED FROM THE ENGINEER'S DRAWINGS.
 6. ALL DIMENSIONS ARE IN MILLIMETRES UNLESS NOTED OTHERWISE.
 7. THE CONTRACTOR IS TO ENSURE THE STABILITY OF EACH ELEMENT AND THE STABILITY OF THE OVERALL CONSTRUCTION UNTIL THE WORKS ARE COMPLETE.
 8. ALL DESIGNS, CONNECTIONS, WORKMANSHIP AND MATERIAL ARE TO COMPLY WITH THE CURRENT BUILDING REGULATIONS AND THE LATEST RELEVANT BRITISH STANDARD SPECIFICATION AND CODES OF PRACTICE OR OTHERWISE BE TO THE SPECIFIC WRITTEN APPROVAL OF THE ENGINEER.
 9. INSPECTIONS MADE BY THE LOCAL AUTHORITY, SHALL BE ARRANGED BY THE CONTRACTOR TO SUIT HIS PROGRAMME. ANY COST ARISING OUT OF FAILING TO CARRY OUT THE WORK TO THE SATISFACTION OF THE LOCAL AUTHORITY WILL BE THE SOLE RESPONSIBILITY OF THE CONTRACTOR.
 10. THE CONTRACTOR MUST MAKE THEMSELVES AWARE OF THE EXISTING UTILITIES / SERVICES LOCATED WITHIN AND ADJACENT TO THE SITE. **NO EXCAVATIONS ARE TO BE UNDERTAKEN UNTIL THE UTILITY COMPANIES HAVE BEEN INFORMED / CO-ORDINATED WITH:** DIAL-BEFORE-YOU-DIG ADVICE IS FOLLOWED AND THE AREA IS CAT SCANNED. ALL UTILITY COMPANY GUIDELINES AND HEALTH & SAFETY PROCEDURES MUST BE STRICTLY FOLLOWED.

P01	30.11.22	PRELIMINARY ISSUE	SAH	MH	
rev	date	details	drawn	checked	



+44 (0)1603 430650 | mail@canhamconsulting.co.uk | www.canhamconsulting.co.uk
 client

FOUNDRY PLANT CENTRE

architect
 DURRANTS

project
 FOUNDRY PLANT CENTRE
 IPSWICH ROAD, TASBURGH

title
 DRAINAGE DETAILS

CCL ref:	drawn	design	checked	scale	size	date
217316	SAH	SAH	MR	As Shown	A1 (L)	30.11.22

status:
 S2 - SUITABLE FOR INFORMATION

drawing number	revision
217316-CCL-XX-00-DR-C-3900	P01

© This drawing is copyright and is not to be reproduced without the written permission of Canham Consulting Ltd

PRELIMINARY DRAWING:
 THIS DRAWING IS FOR PRELIMINARY PURPOSES ONLY AND MUST NOT BE READ AS A CONSTRUCTION ISSUE.
 IT INDICATES DESIGN INTENT ONLY AND IS SUBJECT TO AMENDMENT DURING FINAL DESIGN DEVELOPMENT.

THIS DESIGN IS PRODUCED IN ACCORDANCE WITH THE CONSTRUCTION (DESIGN AND MANAGEMENT) REGULATIONS 2016 INCORPORATING THE APPROVED CODE OF PRACTICE. REGULATIONS 7, 9 AND 11. THOSE ALTERING THE DESIGN WITHOUT THE AUTHORITY OF CANHAM CONSULTING LTD SHOULD BE AWARE THEY MAY ALSO ASSUME RESPONSIBILITY FOR THESE CHANGES.