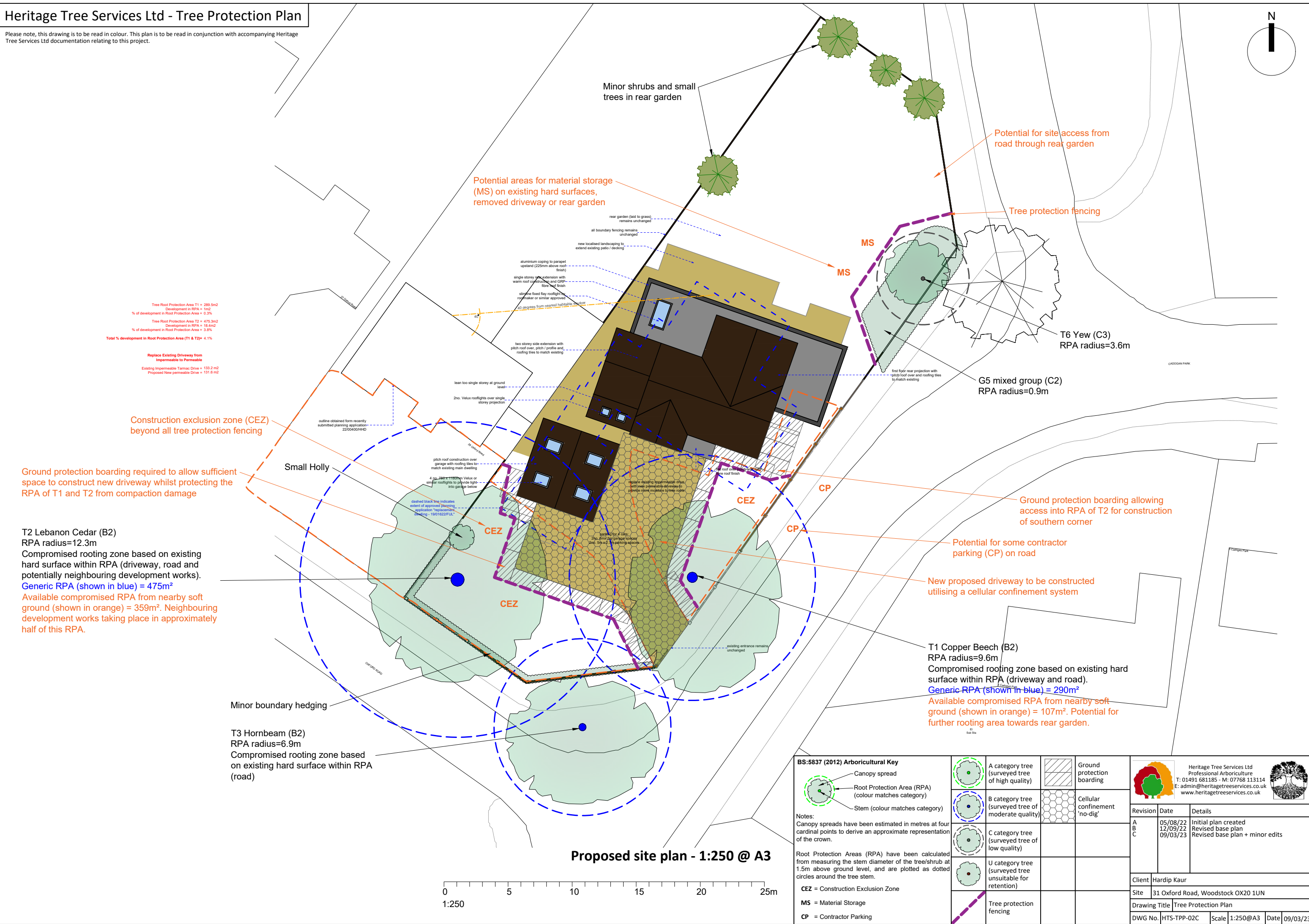
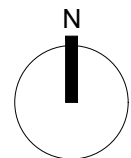


Heritage Tree Services Ltd - Tree Protection Plan

Please note, this drawing is to be read in colour. This plan is to be read in conjunction with accompanying Heritage Tree Services Ltd documentation relating to this project.



Tree Root Protection Area T1 = 289.5m²
 Development in RPA = 0m²
 % of development in Root Protection Area = 0.3%

Tree Root Protection Area T2 = 475.3m²
 Development in RPA = 18.4m²
 % of development in Root Protection Area = 3.9%

Total % development in Root Protection Area (T1 & T2) = 4.1%

Replace Existing Driveway from Impermeable to Permeable
 Existing Impermeable Tarmac Drive = 133.2 m²
 Proposed New permeable Drive = 131.6 m²

Construction exclusion zone (CEZ) beyond all tree protection fencing

Ground protection boarding required to allow sufficient space to construct new driveway whilst protecting the RPA of T1 and T2 from compaction damage

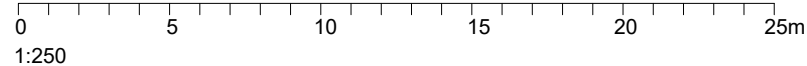
T2 Lebanon Cedar (B2)
 RPA radius=12.3m

Compromised rooting zone based on existing hard surface within RPA (driveway, road and potentially neighbouring development works).
Generic RPA (shown in blue) = 475m²
 Available compromised RPA from nearby soft ground (shown in orange) = 359m². Neighbouring development works taking place in approximately half of this RPA.

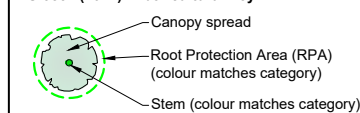
Minor boundary hedging

T3 Hornbeam (B2)
 RPA radius=6.9m
 Compromised rooting zone based on existing hard surface within RPA (road)

Proposed site plan - 1:250 @ A3



BS:5837 (2012) Arboricultural Key



Notes:
 Canopy spreads have been estimated in metres at four cardinal points to derive an approximate representation of the crown.

Root Protection Areas (RPA) have been calculated from measuring the stem diameter of the tree/shrub at 1.5m above ground level, and are plotted as dotted circles around the tree stem.

CEZ = Construction Exclusion Zone

MS = Material Storage

CP = Contractor Parking

	A category tree (surveyed tree of high quality)		Ground protection boarding
	B category tree (surveyed tree of moderate quality)		Cellular confinement no-dig
	C category tree (surveyed tree of low quality)		
	U category tree (surveyed tree unsuitable for retention)		
	Tree protection fencing		

Heritage Tree Services Ltd Professional Arboriculture T: 01491 681185 - M: 07768 113114 E: admin@heritagetreeservices.co.uk www.heritagetreeservices.co.uk		
Revision	Date	Details
A	05/08/22	Initial plan created
B	12/09/22	Revised base plan
C	09/03/23	Revised base plan + minor edits
Client	Hardip Kaur	
Site	31 Oxford Road, Woodstock OX20 1UN	
Drawing Title	Tree Protection Plan	
DWG No.	HTS-TPP-02C	Scale 1:250@A3
Date	09/03/23	