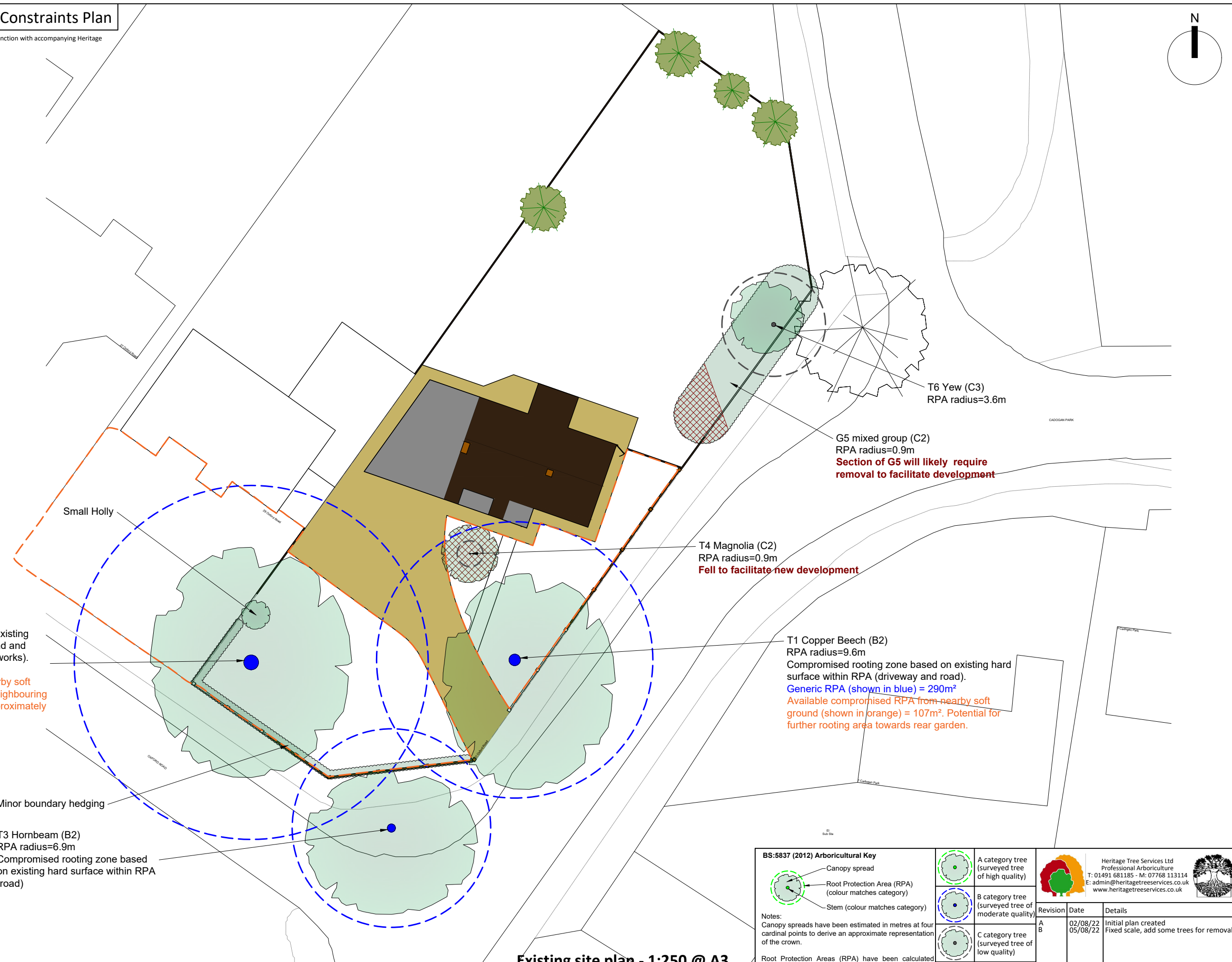
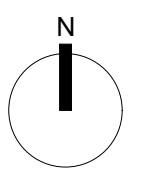


# Heritage Tree Services Ltd - Tree Constraints Plan

Please note, this drawing is to be read in colour. This plan is to be read in conjunction with accompanying Heritage Tree Services Ltd documentation relating to this project.



**T2 Lebanon Cedar (B2)**  
 RPA radius=12.3m  
 Compromised rooting zone based on existing hard surface within RPA (driveway, road and potentially neighbouring development works).  
**Generic RPA (shown in blue) = 475m<sup>2</sup>**  
 Available compromised RPA from nearby soft ground (shown in orange) = 359m<sup>2</sup>. Neighbouring development works taking place in approximately half of this RPA.

Minor boundary hedging

**T3 Hornbeam (B2)**  
 RPA radius=6.9m  
 Compromised rooting zone based on existing hard surface within RPA (road)

**T4 Magnolia (C2)**  
 RPA radius=0.9m  
**Fell to facilitate new development**

**T1 Copper Beech (B2)**  
 RPA radius=9.6m  
 Compromised rooting zone based on existing hard surface within RPA (driveway and road).  
**Generic RPA (shown in blue) = 290m<sup>2</sup>**  
 Available compromised RPA from nearby soft ground (shown in orange) = 107m<sup>2</sup>. Potential for further rooting area towards rear garden.

**T6 Yew (C3)**  
 RPA radius=3.6m

**G5 mixed group (C2)**  
 RPA radius=0.9m  
**Section of G5 will likely require removal to facilitate development**

Existing site plan - 1:250 @ A3



BS:5837 (2012) Arboricultural Key		Heritage Tree Services Ltd Professional Arboriculture T: 01491 681185 - M: 07768 113114 E: admin@heritagetreeservices.co.uk www.heritagetreeservices.co.uk	
	A category tree (surveyed tree of high quality)		Revision
	B category tree (surveyed tree of moderate quality)		Date
	C category tree (surveyed tree of low quality)		Details
	U category tree (surveyed tree unsuitable for retention)		A
	Trees due for removal to facilitate development		B
Notes: Canopy spreads have been estimated in metres at four cardinal points to derive an approximate representation of the crown. Root Protection Areas (RPA) have been calculated from measuring the stem diameter of the tree/shrub at 1.5m above ground level, and are plotted as dotted circles around the tree stem.			02/08/22
			05/08/22
			Initial plan created
			Fixed scale, add some trees for removal
			Client
			Hardip Kaur
			Site
			31 Oxford Road, Woodstock OX20 1UN
			Drawing Title
			Tree Constraints Plan
DWG No.	HTS-TCP-01A	Scale	1:250@A3
Date	05/08/22		