

LANDSCAPE SPECIFICATION

SITE PREPARATION
 Clearance of surface vegetation: Clearance of surface weeds and vegetation from the hedgerow strips to be undertaken by a programme of chemical control. Chemical control will be required to control any further re-growth of vegetation that occurs during the Landscape Contract and initial 3-year aftercare period.

Topsoil
 Topsoil shall be that which is currently in situ. During the works, the topsoil shall be kept free from compaction, contamination and weeds.

Groundworks/General Cultivation
 Cultivation shall not be undertaken within the root protection area of any trees to be retained, without prior agreement from the Local Planning Authority. Topsoil shall be cultivated by hand or machine prior to planting, with minimal compaction by machine. Cultivate to a medium till to the following depth and till, removing all rubbish, vegetation, perennial weeds, roots, stones over 75mm in any one dimension and rake to even levels.

Hedgerow Planting Areas: 300mm deep cultivation to medium till

PLANTING
Plant Stock and Timing
 Plant material and operations shall conform to BS 3936 Nursery Stock (Parts 1-10), BS 4428: 1989, BS 4543: 1989 and BS 5637: 2012. The planting season shall be from the 1st October to the 31st March. Container grown stock may be planted outside this season if accompanied by daily watering, or as necessary to ensure healthy establishment. Planting shall not be carried out during periods of frost, drought, cold drying winds or when the soil is waterlogged or frozen.

- Plants generally:**
- Plants are to be materially undamaged, sturdy, healthy, vigorous, of good shape and without elongated shoots.
 - Grown in a suitable environment and hardened off.
 - Free from pests, diseases, discoloration, weeds and physiological disorders.
 - With balanced root and branch systems, root system and condition in accordance with the relevant part of the National Plant Specification.
 - True to name.

Transplants and Container Grown Stock:

- 1 + 1 transplants as scheduled.
- Bare rooted stock shall be in a healthy condition with good fibrous root system.

Labelling and information:
 Provide each bundle of transplants of a single species with supplier's labelling for delivery to site, showing the full botanical name and number of plants per bundle.

Supply of Plants:
 Unless specified otherwise, obtain transplants and container grown stock from suppliers listed in the Horticultural Trades Association Nursery Certification Scheme.

Substitutes:
 If specified plants are unavailable or known to be likely to be unavailable at the time of ordering, submit alternatives to the CA, stating price and how they differ from the specification. Such substitutions may not be acceptable and submission of further alternatives may be required. Obtain approval before making any substitution.

Delivery:
 The contractor shall give the CA five days' written notice of the delivery of plant material to site and the commencement of planting operations.

- Handling Storage and Transport:**
- Comply with CPSE 'Handling and establishing landscape plants' (obtainable from the Horticultural Trades Association) Part I, Part II and Part III, paragraphs 1.3.3 to 1.3.6, 3.0, and 4.0.
 - Protect plants from frost.
 - Pack transplants in coextruded polythene bags.
 - Handle plants with care. Protect from mechanical damage and do not subject to shock, e.g. by dropping from a vehicle.

Unpacking:
 Upon arrival at the site, all bare rooted transplants shall be unpacked within 25 hours, unless they are to be planted within 48 hours. Transplants shall be broken out of bundles and heeled in friable soil and the roots kept moist.

Planting generally:

- Comply with CPSE 'Handling and establishing landscape plants' (obtainable from the Horticultural Trades Association) Part III, paragraphs 6.2 to 6.6.
- Plant upright or well balanced with best side to front.

Surplus Materials:

- All surplus materials including subsoil, stones, debris, wrapping material, canes, ties, temporary labelling and pruning's to be removed from site.

PREPARATION FOR PLANTING
Herbicide: Hedge Planting Strips: Prevent weeds from seeding and perennial weeds from becoming established, by removal of weed growth, by hand or by spot application of a suitable herbicide, Glyphosate or equivalent approved, to provide a weed free planting site. Allow period of time to elapse as recommended by manufacturer before cultivation.

- Mulching of Woodland Compartments:**
 Prior to the application of mulch, the woodland planting areas shall be completely weed free and watered sufficiently to achieve field capacity.
- Mulch is to be free of pests, disease, fungus and weeds.
 - Clear all weeds and mulch to maintain a depth of not less than 75mm after settlement.
 - Mulch is to have over 80% wood content with a particle size of 25-90mm. Screened Wood Chip, supplied by: Material Change Ltd, Tel No. (01449) 721729 or similar approved

Planting of Transplants & Container Grown Stock to Hedgerow Strips

- Services and Safety:**
- CAT scanning will be required; evidence of operator training will be required.
 - Check for below and above ground services, including land drainage, in the vicinity. Inform CA if they may be affected and obtain instructions before proceeding.
 - Comply with Forestry and Arboriculture Training and Safety Council Safety Guides.

Existing Trees: Retain existing trees unless instructed otherwise.

Notch Planting Transplants and incorporating compost:

- 2L of compost to be incorporated into topsoil for each transplant or container grown plant. When planting transplants some compost should be spread on the surface, prior to notching planting, to ensure that some of the compost is taken into the notch during planting operations.
- Make a vertical 'U', 'V', 'T' or 'H' notch with a special spade or mattock, deep enough to accommodate full depth of roots.
- Plant transplants with the root collar at ground level and firm the soil.
- Compost to be 'topgrow' peat-free tree and shrub planting compost, supplied by: Melcourt Ltd, Tel. no. 01666 502711, or equivalent approved.

SETTING OUT
Delineation of areas to be planted: All areas to be planted with new hedgerows will be delineated on site prior to planting.

- Setting Out: Hedgerows:**
- Plant at 5 plants/linear metre in double staggered rows as shown on this drawing.
 - Plant in single species odd number groups of 3 to 9 of the same species.

Planting
 All planting that is within the root protection area of existing trees shall be undertaken by hand and positions altered should tree roots be encountered, in order to avoid damage to the root systems.

All plants shall be set out evenly over the hedgerow strips as indicated, to the density and quantities shown. All plants shall be planted upright at the same depth as the nursery soil level and evenly spaced, leaving room for growth. All restrictive containers shall be removed with roots not twisted. Immediately following planting, all plants shall be watered-in to field capacity.

Container grown plants shall be planted in a planting pit sufficient to accommodate the plant without causing root damage, with a minimum of 50mm backfill beyond the root ball extent. Plants to be firm, watered-in and dead, damaged or lopsided branches shall be removed after planting. Bare-root plants shall be silt planted, incorporating an approved high phosphate, slow-release fertilizer.

PROTECTION
Rabbit proof fencing:
 Rabbit fencing shall consist of 1200mm x 31mm mesh galvanized wire netting on two 2.5mm line wires, 900mm high with 150mm buried below ground 150mm down and turned outwards from the protected area. The fence to be supported by 75mm diameter treated softwood posts at 4m centres and driven 700mm into firm ground or set in concrete footings if the ground is very weak, with straining posts and struts at corners as for standard wire fences.

AFTERCARE PERIOD
Regular Visits
 Maintenance shall be carried out in accordance with the LEMP Report for this project. All arisings shall be carted away and the site shall be left clean and tidy at all times.

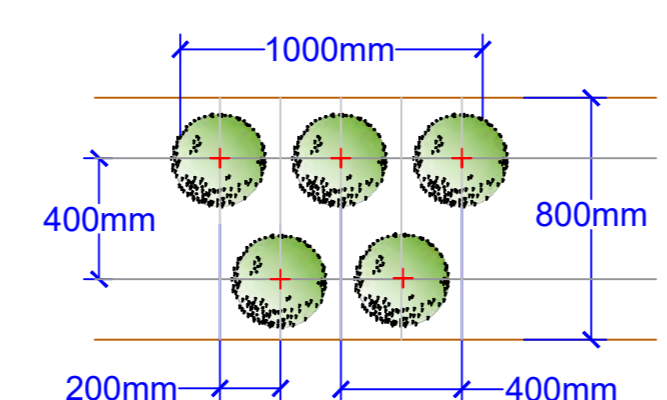
Watering
 All planting and grass areas shall not be allowed to dry out and shall be kept well watered during the growing season, ensuring the soil is kept moist at all times but avoiding waterlogging.

Replacement Planting
 During each August within the Aftercare Period an inspection shall be made and all plants that have died, are missing, damaged or have failed to thrive shall be noted and replaced in the following planting season.

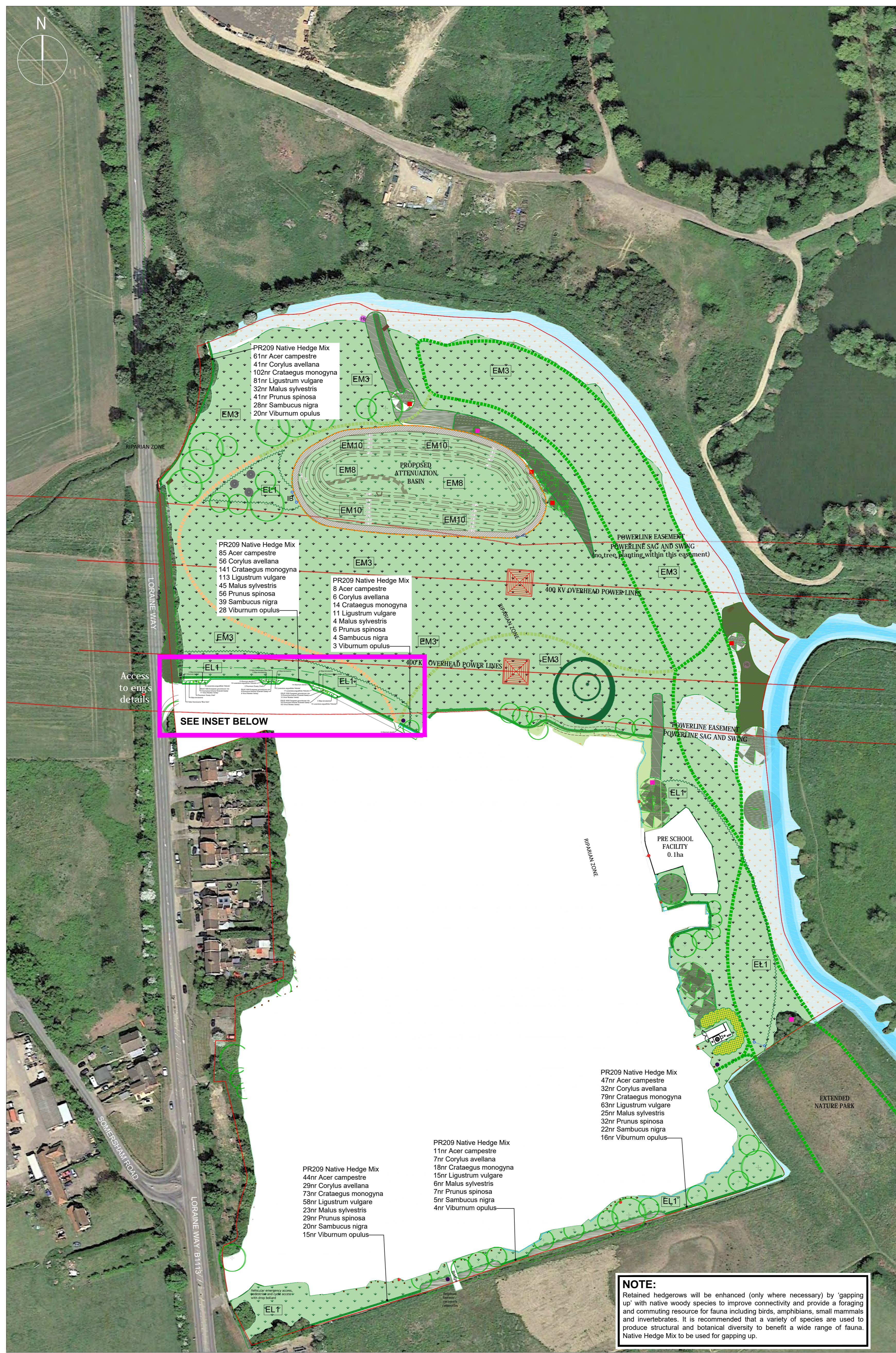
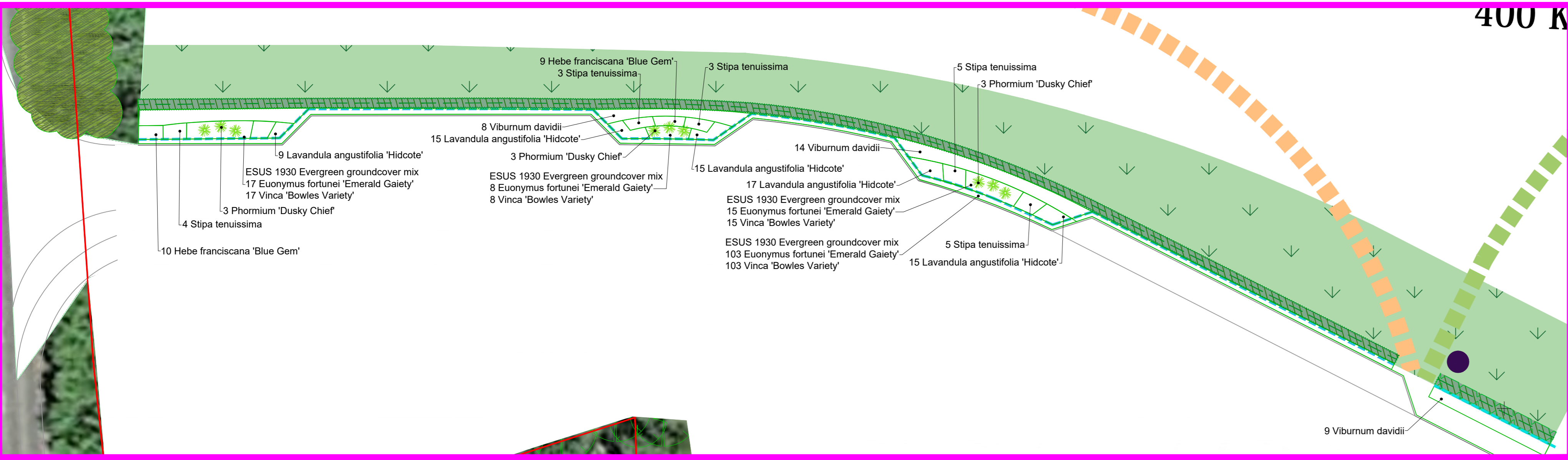
PLANTING SCHEDULE						
Herbaceous						
Qty	Name	Height	Root	Cntr	Ctrs (m)	
24	<i>Stipa tenuissima</i>		C	1-2L	0.800	
24						
Shrub						
Qty	Name	Height	Root	Cntr	Ctrs (m)	
143	<i>Euonymus fortunei</i> 'Emerald Gaiety'	20-30cm(D)	C	3L	0.500	
171	<i>Hebe franciscana</i> 'Blue Gem'	30-40cm	C	5L	0.500	
71	<i>Lavandula angustifolia</i> 'Hidcote'	30-40cm	C	10-15L	0.450	
9	<i>Phormium Dusky Chief</i>	100-125cm	C	15-20L		
43	<i>Viburnum davidii</i>	50-60cm	C	10-15L	1.155	
143	<i>Vinca 'Bowles Variety'</i>	20-30cm	C	2L	0.500	
428						
452						

PLANTING MIXES								
PR209 Native Hedge Mix To be planted in a double staggered row at 5 plants per metre in groups of 3-9 of the same species.								
Qty	Name	Age	Height	Form	Root	%	Centres	
256	<i>Acer campestre</i>	1/1	60-80cm	Transplant	B	15.00 %	0.200	
171	<i>Corylus avellana</i>	1/1	60-80cm	Transplant	B	10.00 %	0.200	
427	<i>Crataegus monogyna</i>	1/1	60-80cm	Transplant	B	25.00 %	0.200	
341	<i>Ligustrum vulgare</i>	1/1	60-80cm	Transplant	B	20.00 %	0.200	
135	<i>Malus sylvestris</i>	1/1	60-80cm	Transplant	B	8.00 %	0.200	
171	<i>Prunus spinosa</i>	1/1	60-80cm	Transplant	B	10.00 %	0.200	
118	<i>Sambucus nigra</i>	1/1	60-80cm	Transplant	B	7.00 %	0.200	
86	<i>Viburnum opulus</i>	1/1	40-60cm	Transplant	B	5.00 %	0.200	
1705								

NATIVE MIX HEDGE PLANTING
DOUBLE STAGGERED ROW - 5M



INSET: PLANTING TO ENTRANCE 1:250



LEGEND

- Existing trees and vegetation retained
- Proposed tree planting (see Landscape Masterplan for details)
- Proposed native hedge mix to be managed to 1.2m high
- Proposed EL1 seed mix (Flowering Lawn Mix)
- Proposed EM3 seed mix
- Proposed semi-improved tussock grassland Emorsgate EM10 to the banks of the Suds Basin
- EM8 mix in the base of Suds basin
- Delineates transition in wildflower grassland mixes
- Riparian Zone. See LEMP for maintenance proposals
- Proposed native shrub planting
- Jacksens child friendly fence with the gravel board removed
- Timber knee rail
- Maintenance access gate
- Breedon self-binding gravel path
- Mown path - existing
- Mown path - proposed
- Circular picnic bench
- Interpretation board (ecology)
- Shallow mounding
- Location of burial mound and ditch

C	Layout updated	M/LN	28.04.23
B	Layout updated	M/LN	09.12.22
A	Fencing amended in legend	M/D	11.11.22
Issue	Revised	Issue	Date

matt lee
 LANDSCAPE ARCHITECTURE
 8, The Street, Mansford, Belby's Wooded, Boston CM23 1DD
 email: matt@mattlee.co.uk
 cell: 01279 818195

Project
Land east of Loraine Way
Bramford, Suffolk

Client
Belway Homes (Essex) Ltd

ADVANCED PLANTING PROPOSALS

Date	JUNE 2022	Scale	1:1000 @ A0
Job No.	PR209	Drawing No.	13