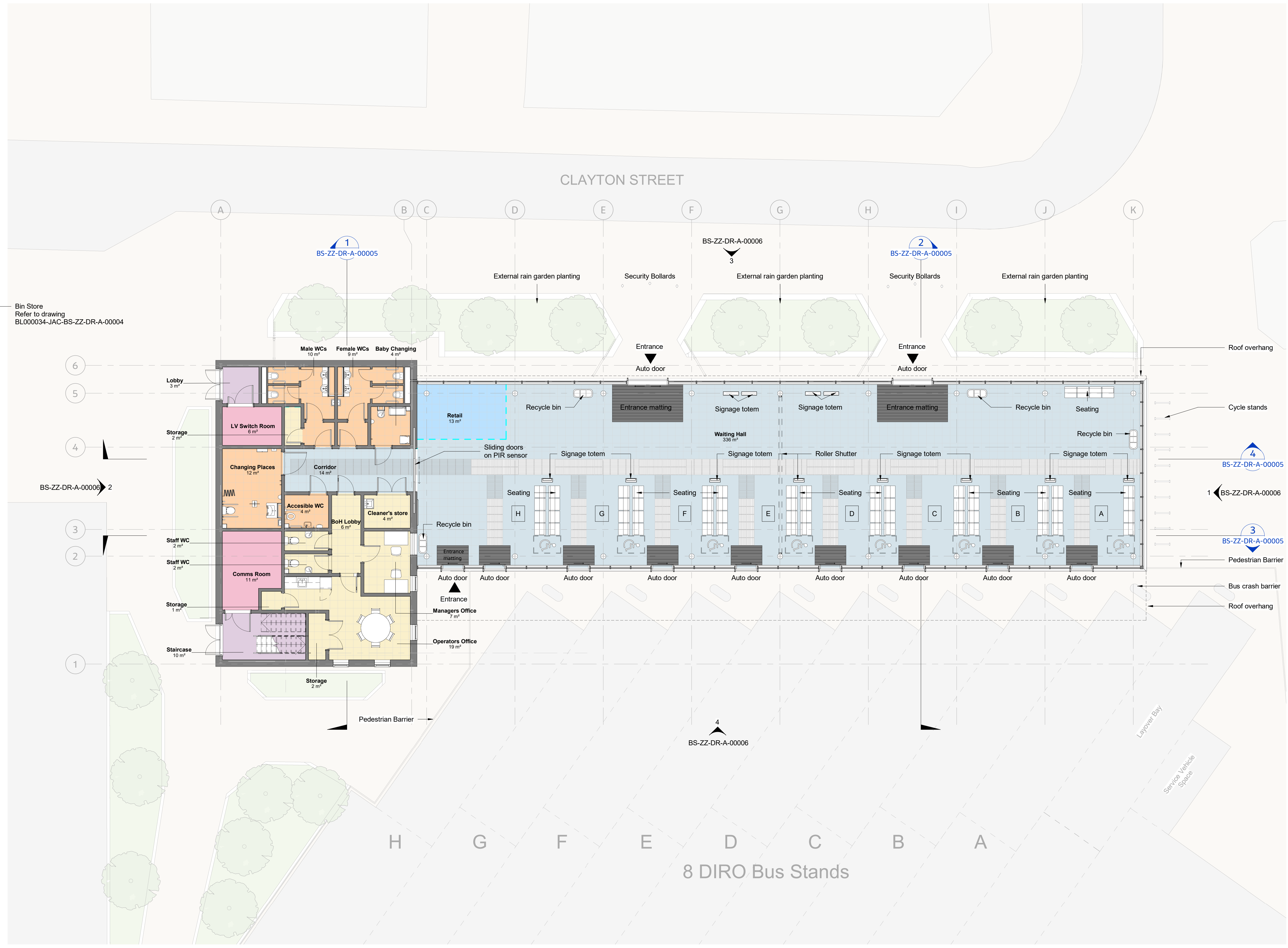


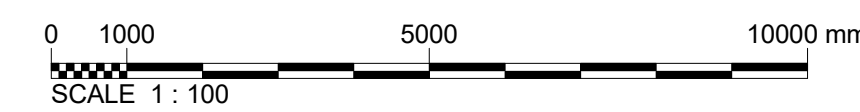


1. THIS DRAWING IS TO BE PRINTED IN COLOUR.
2. THIS DRAWING SHALL BE READ IN CONJUNCTION WITH ALL RELEVANT ARCHITECTS, ENGINEERS AND SPECIALIST DRAWINGS.
3. ALL DIMENSIONS ARE IN MILLIMETRES UNLESS SHOWN OTHERWISE.
4. ALL LEVELS ARE IN METRES RELATIVE TO ORDINANCE DATUM.
5. ALL DIMENSIONS AND LEVELS TO BE CHECKED ON SITE BY THE CONTRACTOR PRIOR TO PREPARING ANY WORKING DRAWINGS OR COMMENCING WORK ON SITE. ANY REQUIREMENTS FOR MODIFICATIONS OR ALTERATIONS ARE TO BE CARRIED OUT WITH THE APPROVAL OF PROJECT MANAGER.

- Key:
- Passenger Concourse Area
  - Retail Provision
  - Staff/ Back-of House Facilities
  - Vertical Circulation
  - Plant Rooms
  - Public WC Facilities
  - Entrance Matting
  - Tactile Floor Route



1 GROUND FLOOR LEVEL PLAN  
1:100



Rev	Rev. Date	Purpose of revision	EC	MS	ZB	DB
P01	16.12.2022	Issued for Planning Application	EC	MS	ZB	DB

**Jacobs**  
Cottons Centre, Cottons Lane, London, SE1 2QG  
Tel: +44 (0)203 980 2000  
www.jacobs.com

Client: **Durham County Council**

Project: **BISHOP AUCKLAND  
BUS STATION & CAR PARK**

Drawing title: **BUS STATION  
GENERAL ARRANGEMENT  
GROUND LEVEL**

Drawing Status	PLANNING APPROVAL	Suitability	S4
Scale	As indicated @ A1	DO NOT SCALE	
Jacobs No.	BL000034	Rev	
Client No.	N/A	Rev	P01

Drawing Number: **BL000034-JAC-BS-S0-DR-A-00001**

© Copyright 2019 Jacobs U.K. Limited. The concepts and information contained in this document are the property of Jacobs. Use or copying of this document in whole or in part without the written permission of Jacobs constitutes an infringement of copyright. Limitation: This drawing has been prepared on behalf of, and for the exclusive use of, the Client, and is subject to, and issued in accordance with, the provisions of the contract between Jacobs and the Client. Jacobs accepts no liability or responsibility whatsoever for, or in respect of, any use of, or reliance upon, this drawing by any third party.