

YOUR SHED, YOUR WAY. SHOP OUR RANGE OF MODULAR SHEDS NOW.

MY ACCOUNT

CONTACT US



Quick Search...



**My Basket**

0 Item(s)



**Call Us: 0800 029 1000**

Lines Closed

Show sites closed



0800 029 1000



Quick Search...



GARDEN SHEDS

LOG CABINS

GARDEN ROOMS

SUMMERHOUSES

PLAYHOUSES

GREENHOUSES

FENCE PANELS



Pick Your Day  
Delivery



UK Manufactured



Sustainability



Customer  
Satisfaction



Installations

Home / New Log Cabin and Garden Room / 3.5m x 3m Log Cabin

Please note: we cannot ship log cabins larger than 4m to BT postcodes

Total:



Add To Basket

Need help, why not give us a ring?

0800 029 1000

DESCRIPTION SPECIFICATION DELIVERY IMPORTANT INFO

## Specification

**Please Note:** Sizes are approximate only. For specific details, please consult our technical department.

Imperial Size (ft)	12 x 10
People Ready To Build	2
Anti-Rot Guarantee	10 Years
Cladding Style	Interlocking
Cladding Material	19mm Tongue and Groove
Roof Material	12mm Tongue and Groove
Floor Material	12mm Tongue and Groove
Roof Type	Apex
Door Style	Single Door
Building Type	Contemporary Log Cabin
Building Type	Home Office Log Cabin



Quick Search...





Quick Search...



Quick Search...



Quick Search...





Quick Search...







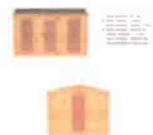
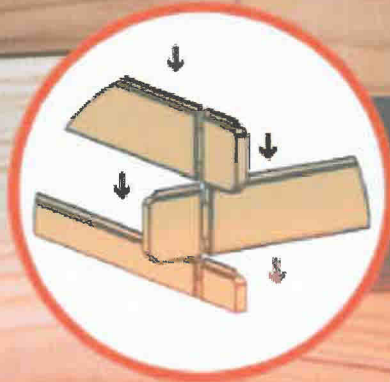
Quick Search...



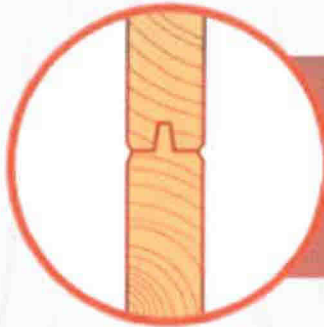
Quick Search...



Quick Search...



Quick Search...

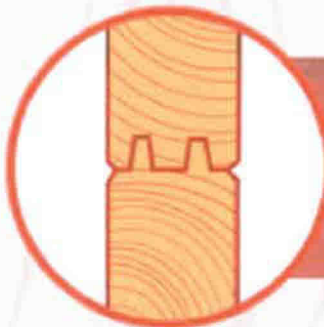
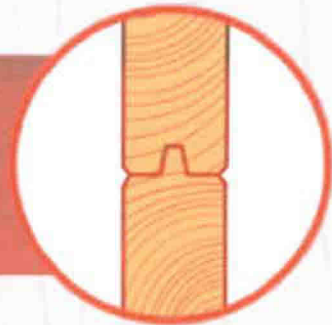


### 19mm LOG THICKNESS

Single tongue. Durable and sturdy construction that offers excellent value. Perfect for the summer months.

### 28mm LOG THICKNESS

Single tongue. Strong and long lasting construction. Perfect for the spring and summer months.

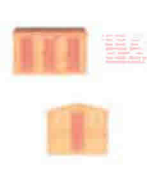
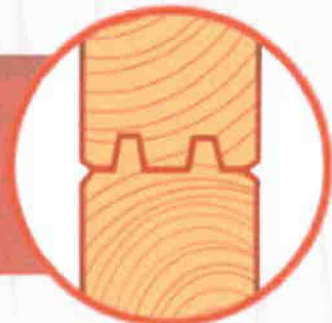


### 34mm LOG THICKNESS

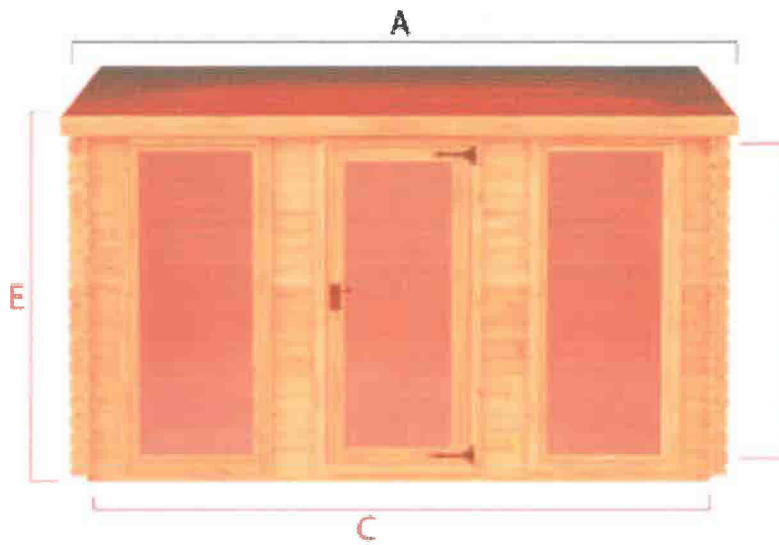
Double tongue. Heavy duty and hardwearing. Perfect for the spring and summer months.

### 44mm LOG THICKNESS

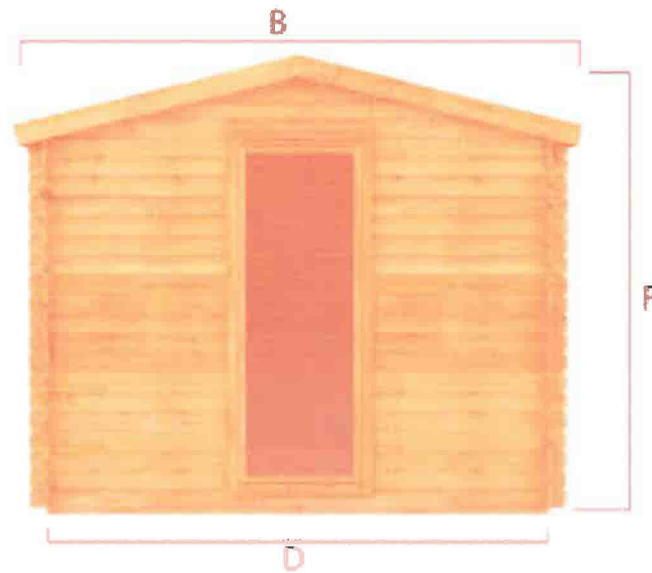
Double tongue. Offers best protection against draught and water ingress. Perfect for year round use.



Quick Search...

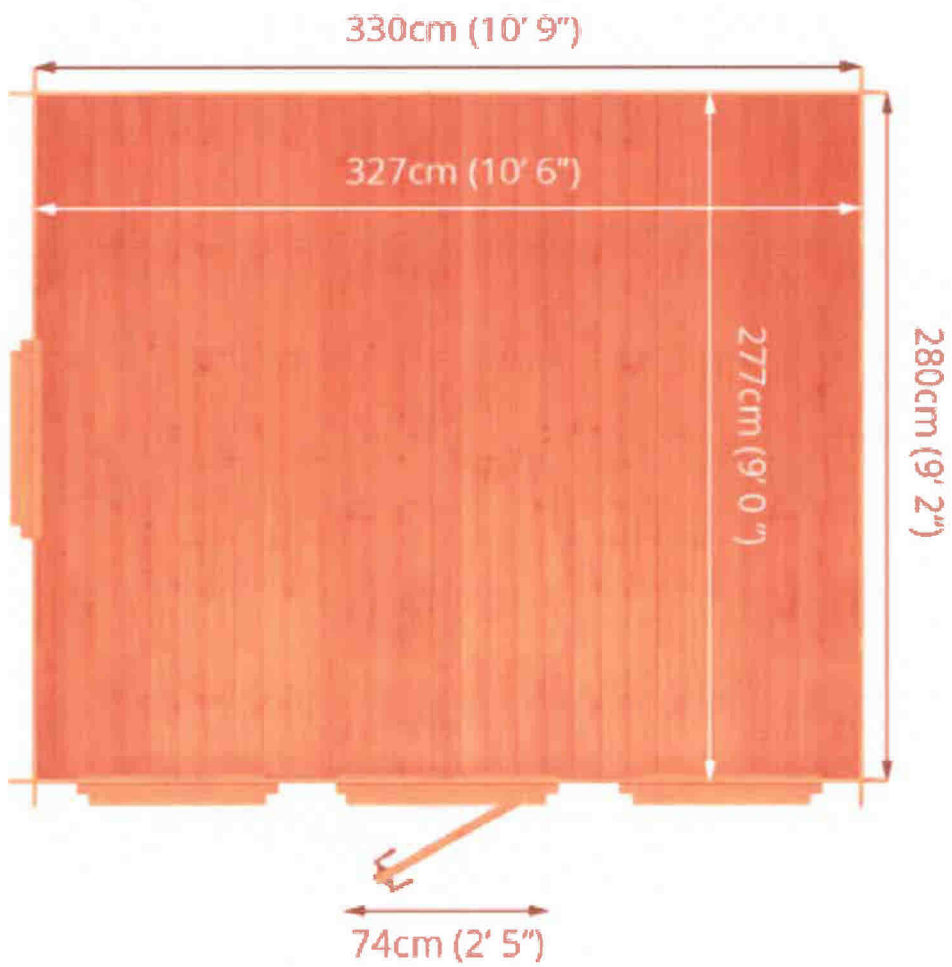


- A- Roof Width 353cm (11'7")
- B- Roof Depth 314cm (10'3")
- C- Base Width 330cm (10'9")
- D- Base Depth 280cm (9'2")
- E- Eaves Height 221cm (7'2")
- F- Roof Height 260cm (8'5")
- G- Door Height 189cm (6'2")





Quick Search...



## CUSTOMISE & BUY

- 10 Year Anti Rot Guarantee
- Double Doors with a lock and key for security
- Hand made in the UK - Superb build quality and materials
- Installation Service Available
- 19mm Interlocking Tongue & Groove Logs
- Opening high strength Styrene Glazed Window
- 12mm Interlocking Tongue & Groove Roof and Floor
- FSC Certified
- Manufactured in the UK

[View Features](#)

[View Specification](#)

