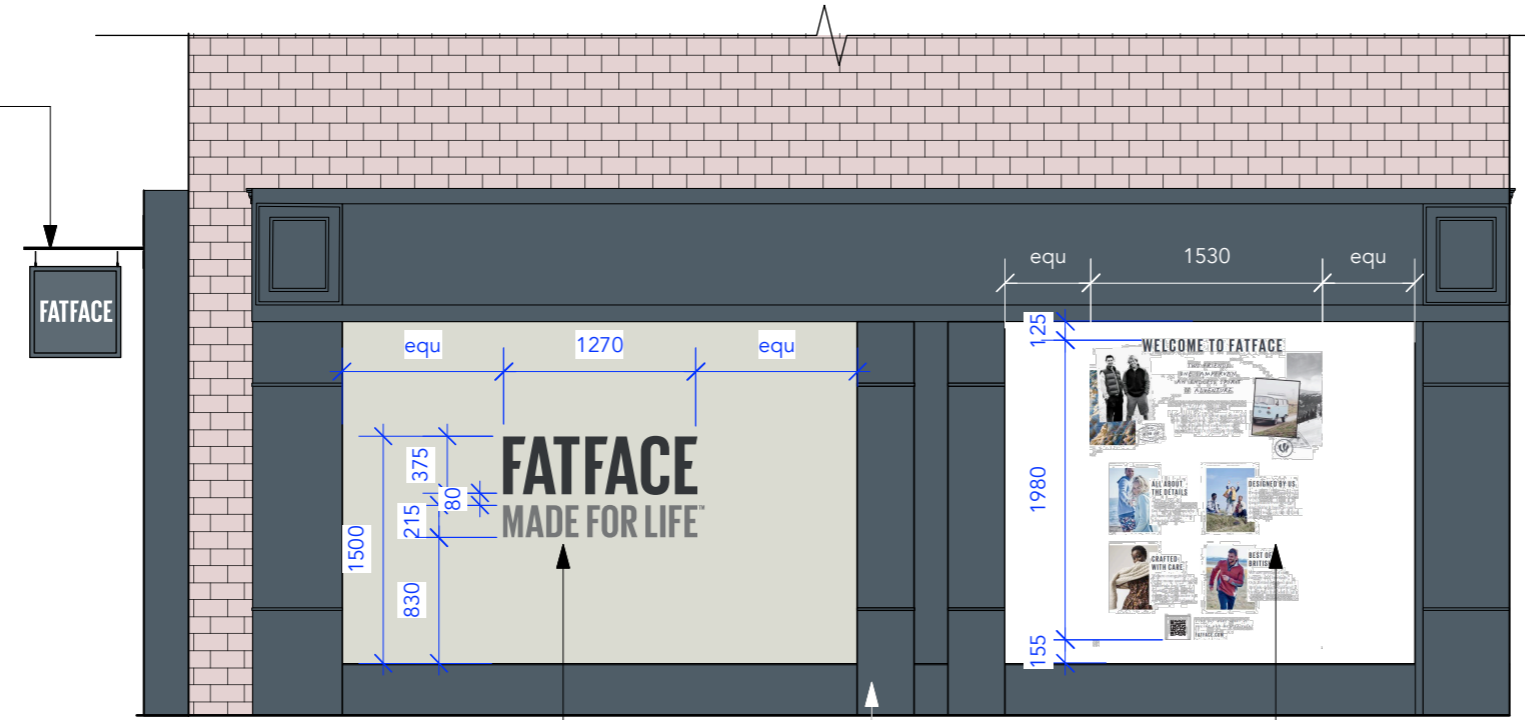




*NOTE:
ALL DIMENSIONS TO BE VERIFIED ON
SITE BY MC.
ANY DISCREPANCIES TO BE REPORTED
TO DESIGNER.

Refer to drawing no:
23.0157.01-2 for details

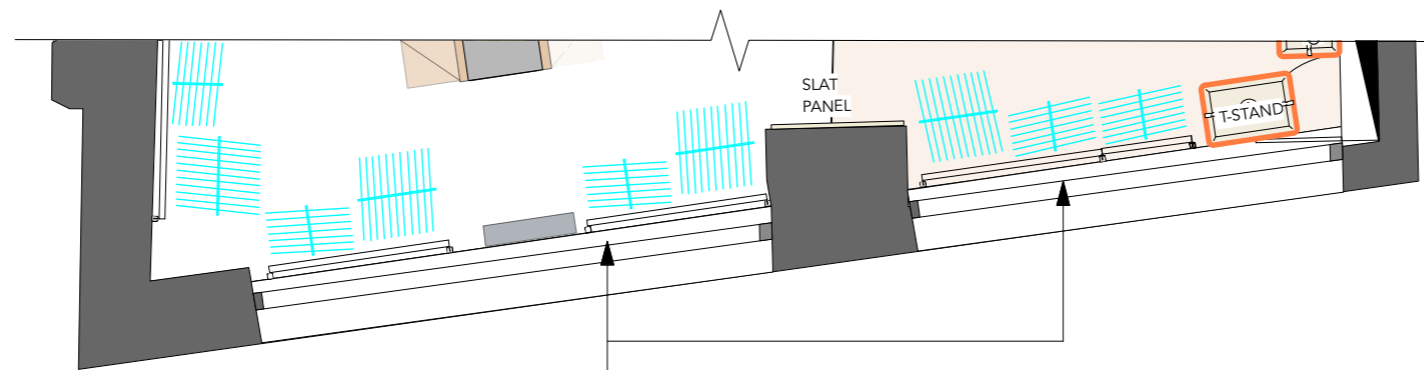


ELEVATION B-B

Apply new vinyl graphics to cover previous Tenant's graphic. Vinyl finished to match PT05 Filmy Green with FatFace letters finished to match PT02 Sea Serpent and Made for Life finished to match Dulux Denim Drift

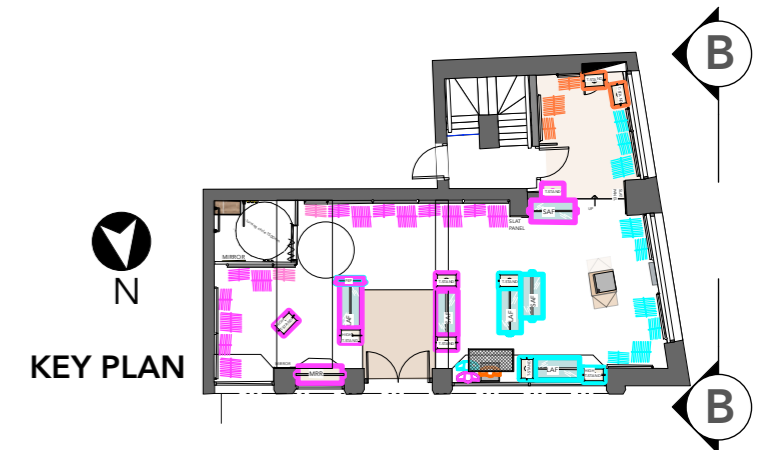
Make good where necessary and paint existing shopfront to match RAL 5008. External satin finish

Apply new vinyl graphics to cover previous Tenant's graphic. Vinyl finished white with Welcome to FatFace full colour graphics applied to centre



PLAN

Apply new vinyl graphics to cover previous Tenant's graphic

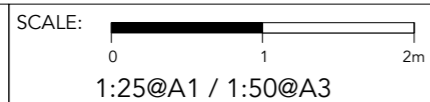


KEY PLAN

*NOTE:
ALL DIMENSIONS TO BE VERIFIED ON
SITE BY MC.
ANY DISCREPANCIES TO BE REPORTED
TO DESIGNER.

Colour references:

FatFace PT01 Pointings | RAL 9010
FatFace PT02 Sea Serpent | RAL 5008



DRAWN BY:	CHECKED BY:	DRAWN DATE:	REVISION DATE:	DRAWING TITLE:
LMH	LA	05.04.2023	12.05.2023	PROPOSED SIDE EXTERNAL ELEVATION

DRAWING NO:
23.0157.01-3A

REV:	DESCRIPTION:	BY:	DATE:
A	Signage removed from fascia. FatFace Made for Life and Welcome to FatFace vinyls added to windows to cover previous tenant's graphic; Projecting sign and fascia sign removed; North icon and scale bar added	SMR	12.05.23

STORE ADDRESS: **72 Bondgate Within Alnwick NE66 1HZ**