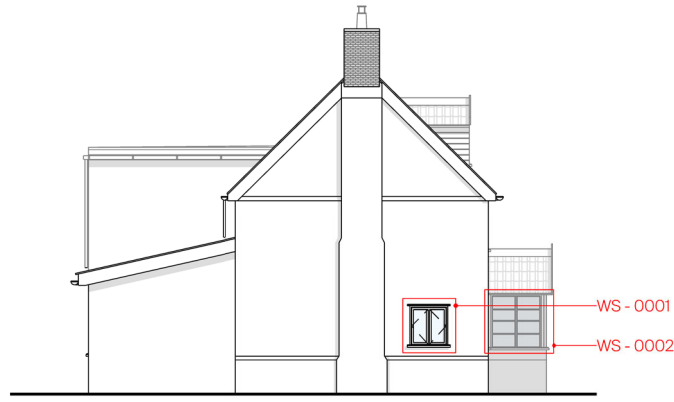
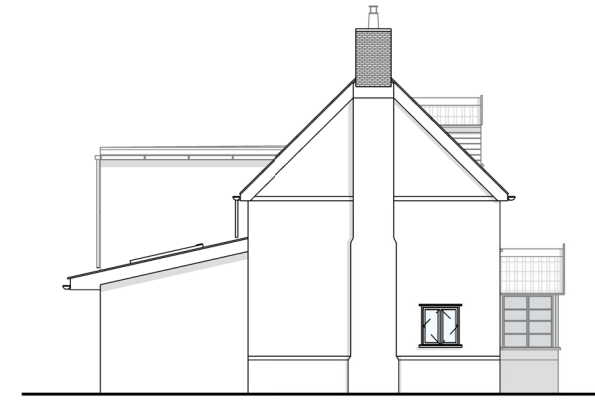


Window	Retained	Removed	Proposed	Existing/Proposed Condition	Work Done
WS-0001	X			Peeling paint, Damaged sealant	Loose paint removed, Window primed and repainted, Window resealed with heritage putty
WS-0002	X			Peeling paint, Damaged sealant	Loose paint removed, Window primed and repainted, Window resealed with heritage putty
WS-0003	X			Peeling paint, Damaged sealant	Loose paint removed, Window primed and repainted, Window resealed with heritage putty
WS-0004	X			Peeling paint, Damaged sealant	Loose paint removed, Window primed and repainted, Window resealed with heritage putty
WS-0005		X		Peeling paint, Damaged sealant, Extensive signs of rot to frame and surround, Loose glazing panes	Window located in the modern extension and was removed due to extensive damage to the surround and frame replaced with WS-0015
WS-0006	X			Peeling paint, Damaged sealant	Loose paint removed, Window primed and repainted, Window resealed with heritage putty
WS-0007	X			Peeling paint, Damaged sealant	Loose paint removed, Window primed and repainted, Window resealed with heritage putty
WS-0008	X			Peeling paint, Damaged sealant	Loose paint removed, Window primed and repainted, Window resealed with heritage putty
WS-0009	X			Peeling paint, Damaged sealant	Loose paint removed, Window primed and repainted, Window resealed with heritage putty
WS-0010		X		Peeling paint, Damaged sealant, Extensive signs of rot to frame and surround, Loose glazing panes	Window located in the modern extension and was removed due to extensive damage to the surround and frame replaced with WS-0016
WS-0011	X			Peeling paint, Damaged sealant	Loose paint removed, Window primed and repainted, Window resealed with heritage putty
WS-0012		X		Peeling paint, Damaged sealant, Extensive signs of rot to frame and surround, Loose glazing panes	Window located in the modern extension and was removed due to extensive damage to the surround and frame replaced with WS-0019
WS-0013		X		Peeling paint, Damaged sealant, Extensive signs of rot to timber surround	Window located in the modern extension and was removed due to extensive damage to the surround replaced with WS-0018
WS-0014		X		Peeling paint, Damaged sealant, Extensive signs of rot to timber surround	Window located in the modern extension and was removed due to extensive damage to the surround replaced with WS-0017
WS-0015			X	double glazing circular unit inset	double glazing circular unit inset and flush rendered into masonry wall with protective edge lining
WS-0016			X	Steel Crittall style window with double glazing units, 2 unit window with mirror side opening.	Installed new Timber surround with a steel fascia plate, Window construction consists of exposed steel box section and angle section with a single double glazing unit
WS-0017			X	Steel Crittall style window with double glazing units side hinge opening	Installed new Timber surround with a steel fascia plate, Window construction consists of exposed steel box section and angle section with a single double glazing unit
WS-0018			X	Steel Crittall style window with double glazing units side hinge opening	Installed new Timber surround with a steel fascia plate, Window construction consists of exposed steel box section and angle section with a single double glazing unit
WS-0019			X	Steel Crittall style centre split folding doors with double glazing units	Installed new Timber surround with a steel fascia plate, Door construction consists of exposed steel box section and angle section with a single double glazing unit
WS-0020			X	Twin Velux roof lights	Velux units installed within the existing modern extension roof, re-roofed in slate tile, as per manufacturer's instructions
WS-0101	X			Peeling paint, Damaged sealant	Loose paint removed, Window primed and repainted, Window resealed with heritage putty
WS-0102	X			Peeling paint, Damaged sealant	Loose paint removed, Window primed and repainted, Window resealed with heritage putty
WS-0103	X			Peeling paint, Damaged sealant	Loose paint removed, Window primed and repainted, Window resealed with heritage putty
WS-0104	X			Peeling paint, Damaged sealant	Loose paint removed, Window primed and repainted, Window resealed with heritage putty
WS-0105	X			Peeling paint, Damaged sealant	Loose paint removed, Window primed and repainted, Window resealed with heritage putty
WS-0106		X		Peeling paint, Damaged sealant, Extensive signs of rot to timber surround	Window located in the modern extension and was removed due to extensive damage to the surround replaced with WS-0107
WS-0107			X	Steel Crittall style window with double glazing units, 3 unit window with fixed centre flanked by side opening.	Installed new Timber surround with a steel fascia plate, Window construction consists of exposed steel box section and angle section with a double glazing unit.
WS-0201	X			Peeling paint, Damaged sealant, Loose Lead Flashing	Loose paint removed, Window primed and repainted, Window resealed with heritage putty, Lead flashing replaced like for like
WS-0202	X			Peeling paint, Damaged sealant, Missing Lead Flashing	Loose paint removed, Window primed and repainted, Window resealed with heritage putty, Lead flashing replaced like for like

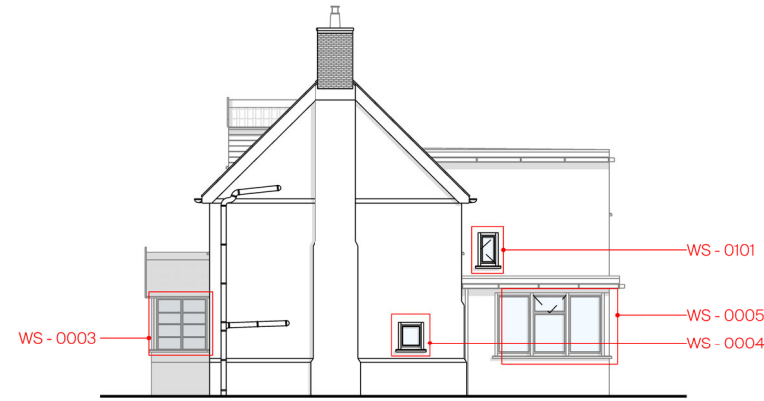
Window Schedule



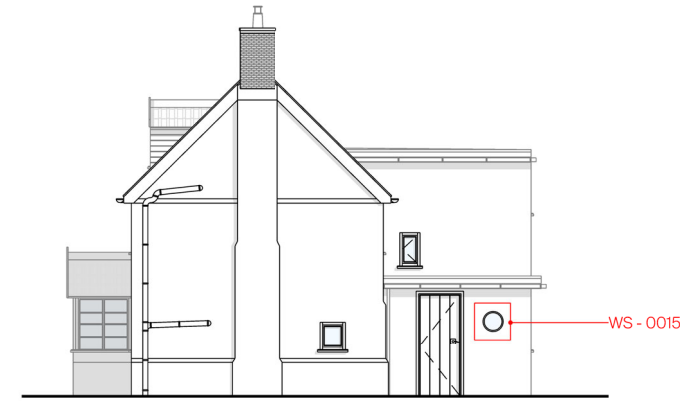
Existing - Elevation - NE
1:150



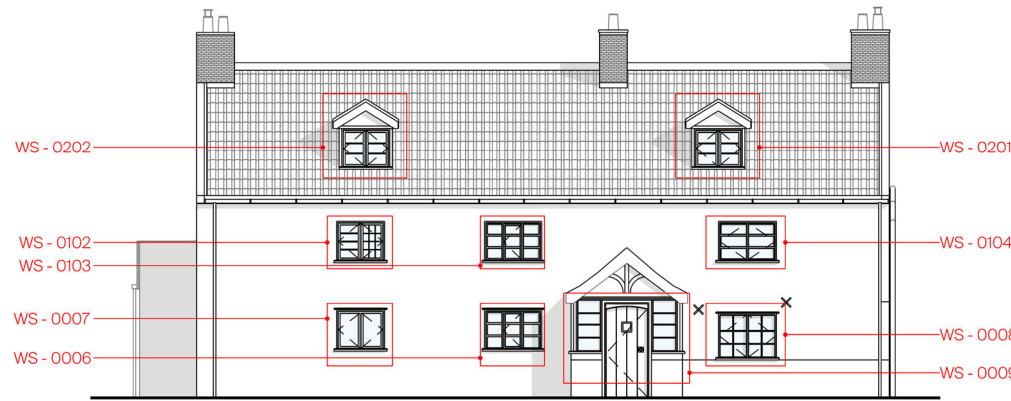
Proposed - Elevation - NE
1:150



Existing - Elevation - SW
1:150



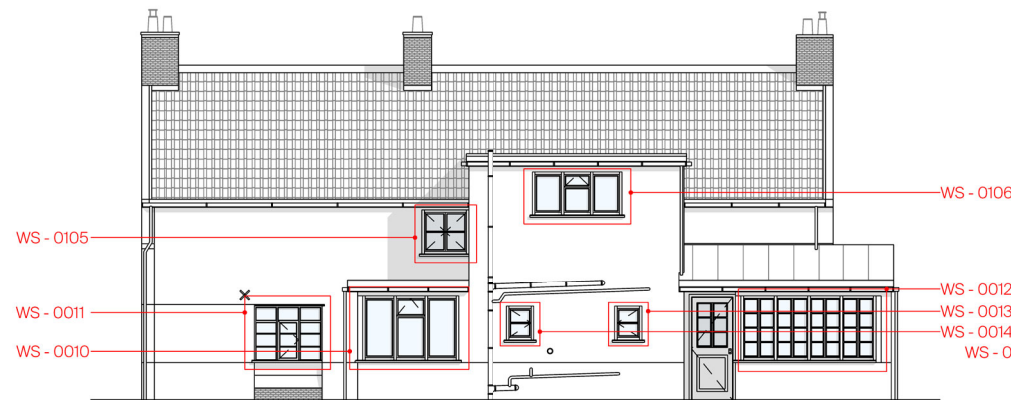
Proposed - Elevation - SW
1:150



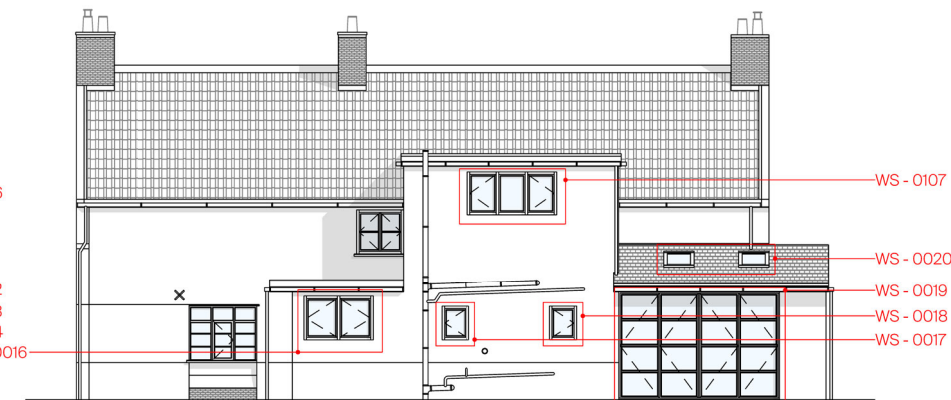
Existing - Elevation - NW
1:150



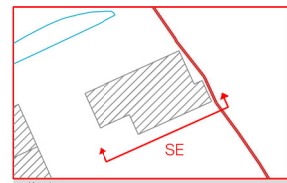
Proposed - Elevation - NW
1:150



Existing - Elevation - SE
1:150



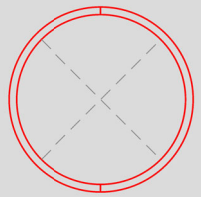
Proposed - Elevation - SE
1:150



Keyplan
Do not scale dimensions. Dimensions govern.
All dimensions are in millimetres unless noted otherwise.
Pitbow & Partners shall be notified in writing of any discrepancies.

Moat Farm

Project Name



Client	Tim Baldwin	
Project Name	The Moat Farm	
Stage	Planning	
Drawing Title	Window Schedule	
Drawing Number	Moat Farm-xx-dr-a-ad-1002	
Scale	Sheet Size	Creation Date
1:150	A3	19/05/2023
Revision	Suitability	
01	For Information	