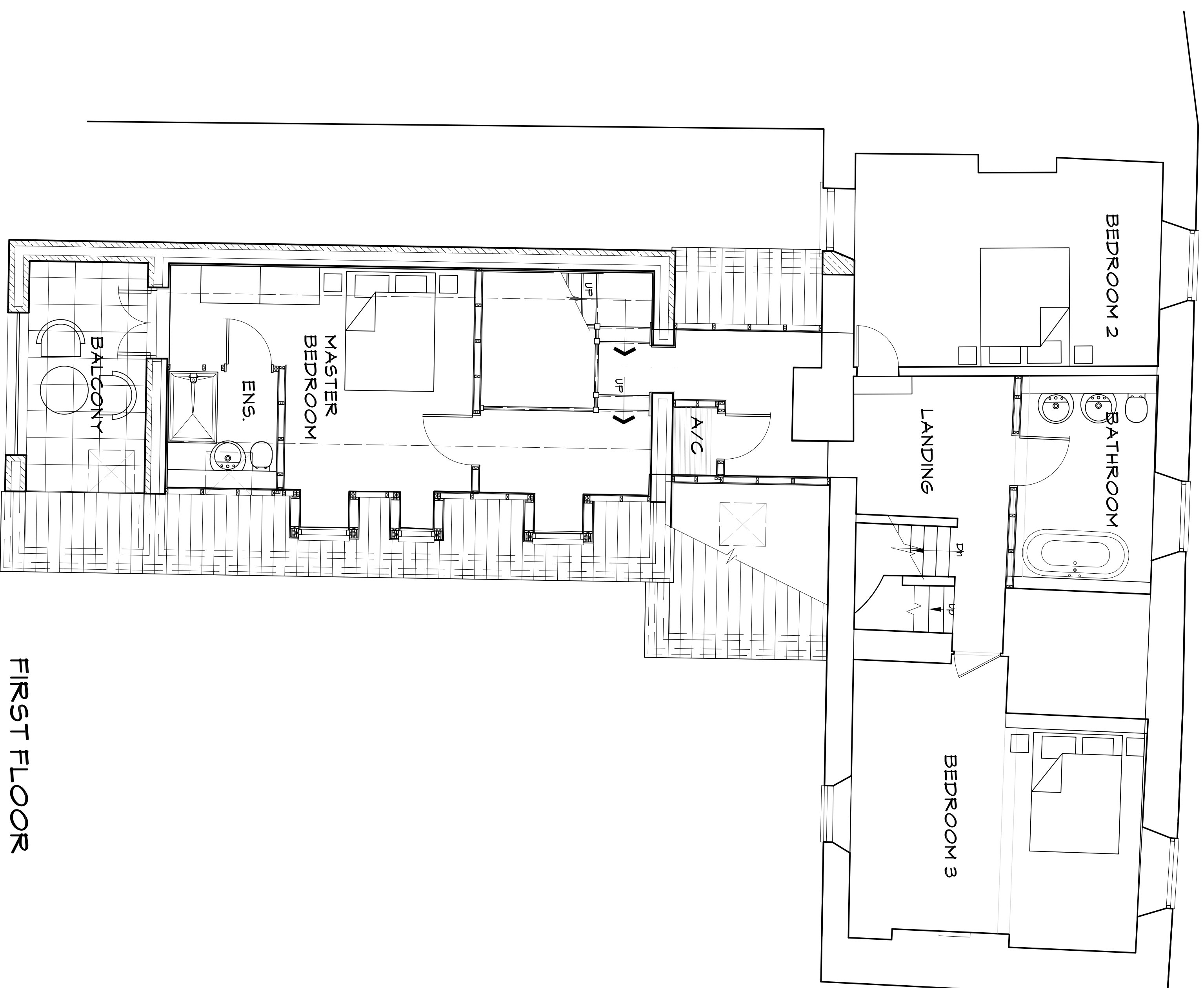


GROUND FLOOR



FIRST FLOOR



Rev	Date	By	Description
1	13.03.2012	ADB	PLANNING ISSUE

1:50 Scale bar
0m 0.5 1 1.5 2 2.5m

PROJECT: 16-044-20-2007

Midlands
1st Floor
15 St. Catherine's St.
Birmingham
B2 4JG
0121 717 6111
0121 717 6111

Southern
16 Meriton
Oxford
OX4 1JF
01865 811111

ABDS Ltd
architectural consultants

PROPOSED CHANGE OF USE
ROSE & CROWN
1 HIGH STREET ISLIP

DATE: 17.3.2012
DRAWN BY: ADB

SCALE: 1:50 @ A1

FLOOR PLANS

DWG No: B/H/22/012

A