



820 1000 2930 2150 600 4870 600 2130 1300 2350 550  
19300

SOUTH



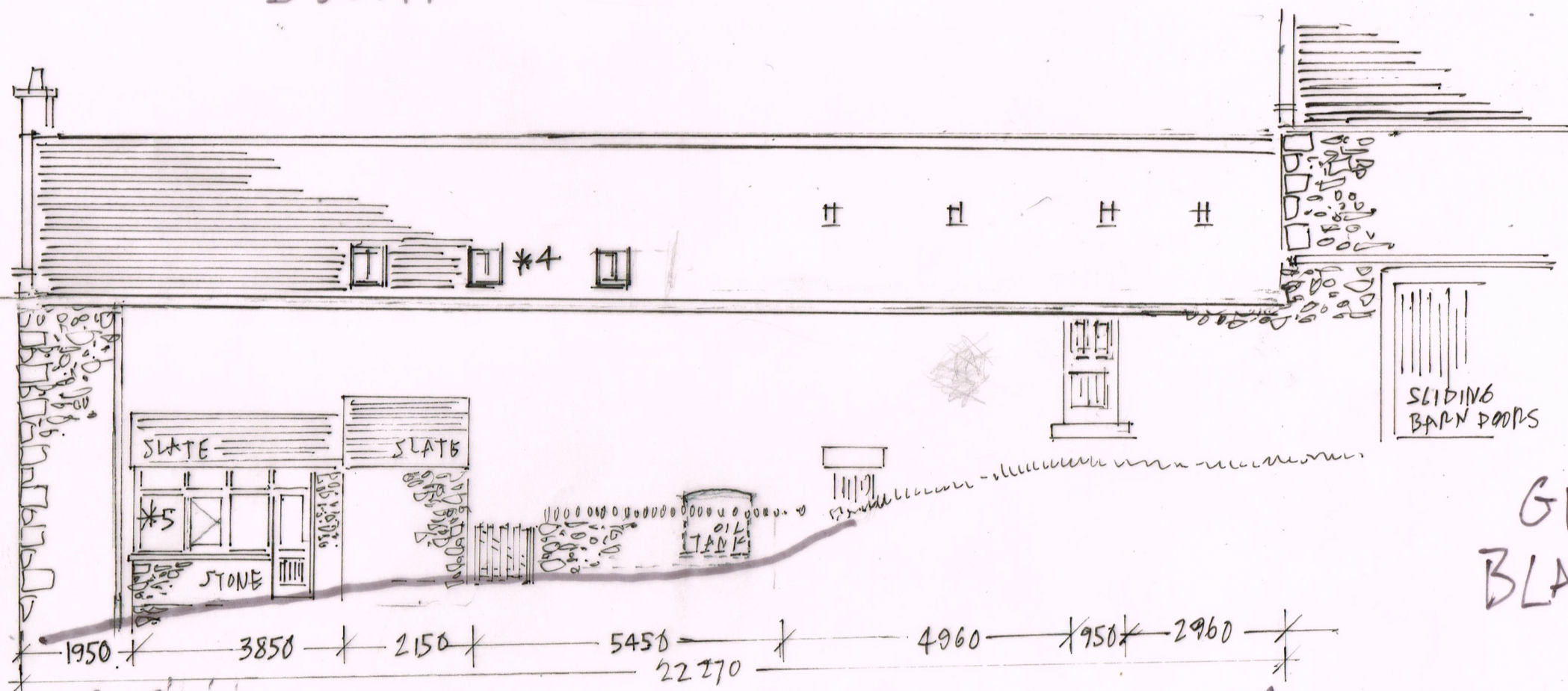
RAISED STONE COPINGS AND 'KNEELERS'

NEW S/SASH WINDOW

STONE BUTTRESS

EAST

\*4  
3 NO. STEEL CONSERVATION FLUSH FITTING ROOFLIGHTS AS PER DWG NO 189/15  
\*5  
REDEVELOPED & EXTENDED BUILDING AS PER DWG NOS 189/07A 189/13 & 189/14A



1950 3850 2150 5450 4960 950 2960  
22270

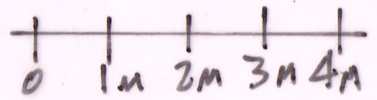
NORTH

\*1  
NEW WINDOW IN DRESSED STONE SURROUND TO MATCH EXISTING GRANARY FENESTRATION AS PER DETAIL DWG NO 189/09 & AS DISCUSSED ON SITE WITH CONSERVATION OFFICER  
\*2  
NEW GLAZED TIMBER FRAME IN RE-OPENED ARCH AS PER DETAILED DWG NO 189/13 & 14A  
\*3  
REPAIRED EXISTING 'HT & MISS' VENT AS PER DETAIL DWG NO 189/11

SLIDING BARN DOORS

GRANARY COTTAGE  
BLACK HEDLEY FARM  
SHOTLEY BRIDGE

PROPOSED ELEVATIONS 1/100 @ A3



SCALE 1/100

ANTHONY R. THOMSON

TEL. NO 07495 199891

DATE 12.12.22

DWG. NO 189/06B