

A DESIGN AND ACCESS STATEMENT ASSOCIATED WITH A LISTED BUILDING CONSENT FOR THE INSTALLATION OF A ROOFLIGHT.  
15 Model Farm, Park Road, Combs, Stowmarket, Suffolk IP14 2JN.



Existing South Elevation

## A DESIGN AND ACCESS STATEMENT.

### 1.0 INTRODUCTION.

This Listed Building Consent is for the installation of a rooflight.

### 2.0 LOCATION.

The rooflight is to be installed within the eastern slope of the second roof pitch. Refer to the attached drawings.

The rooflight will provide daylight to an attic hobby space and provide future safe access to the valley gutter for maintenance purposes.

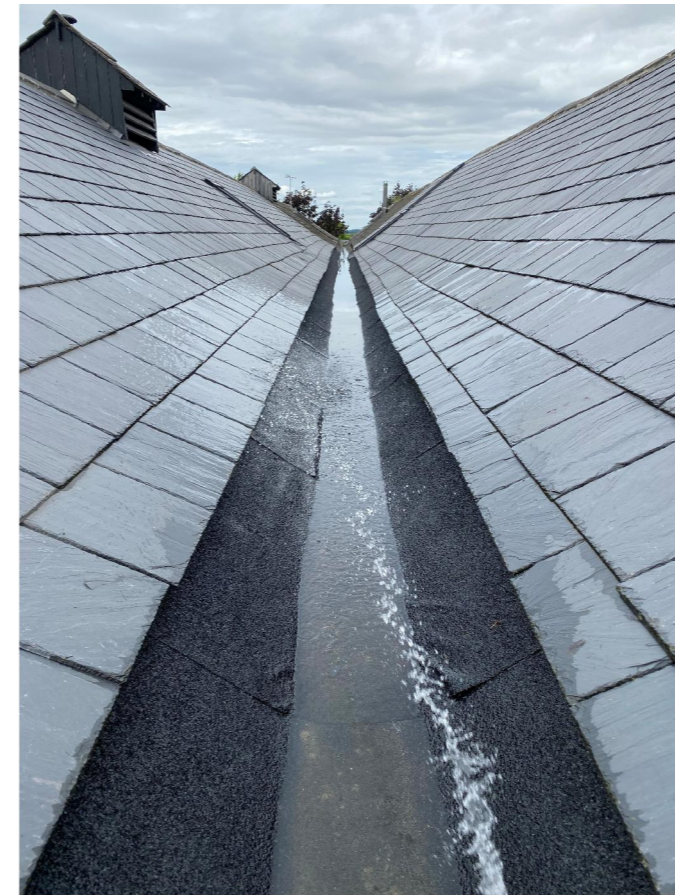
### 3.0 ROOFLIGHT SPECIFICATION.

The rooflight proposed is manufactured by The Rooflight Company. It will be The Conservation Rooflight which is the original low profile skylight, combining the highest modern performance with an authentic traditional appearance. The product is favoured by English Heritage, the National Trust and Planning / Conservation Officers.

The rooflight proposed is Reference **CR13-3** with three panes and two glazing bars. Structural opening size 1021mm (W) x 1180mm (L). Finished internal size 821mm (W) x 980mm (L).



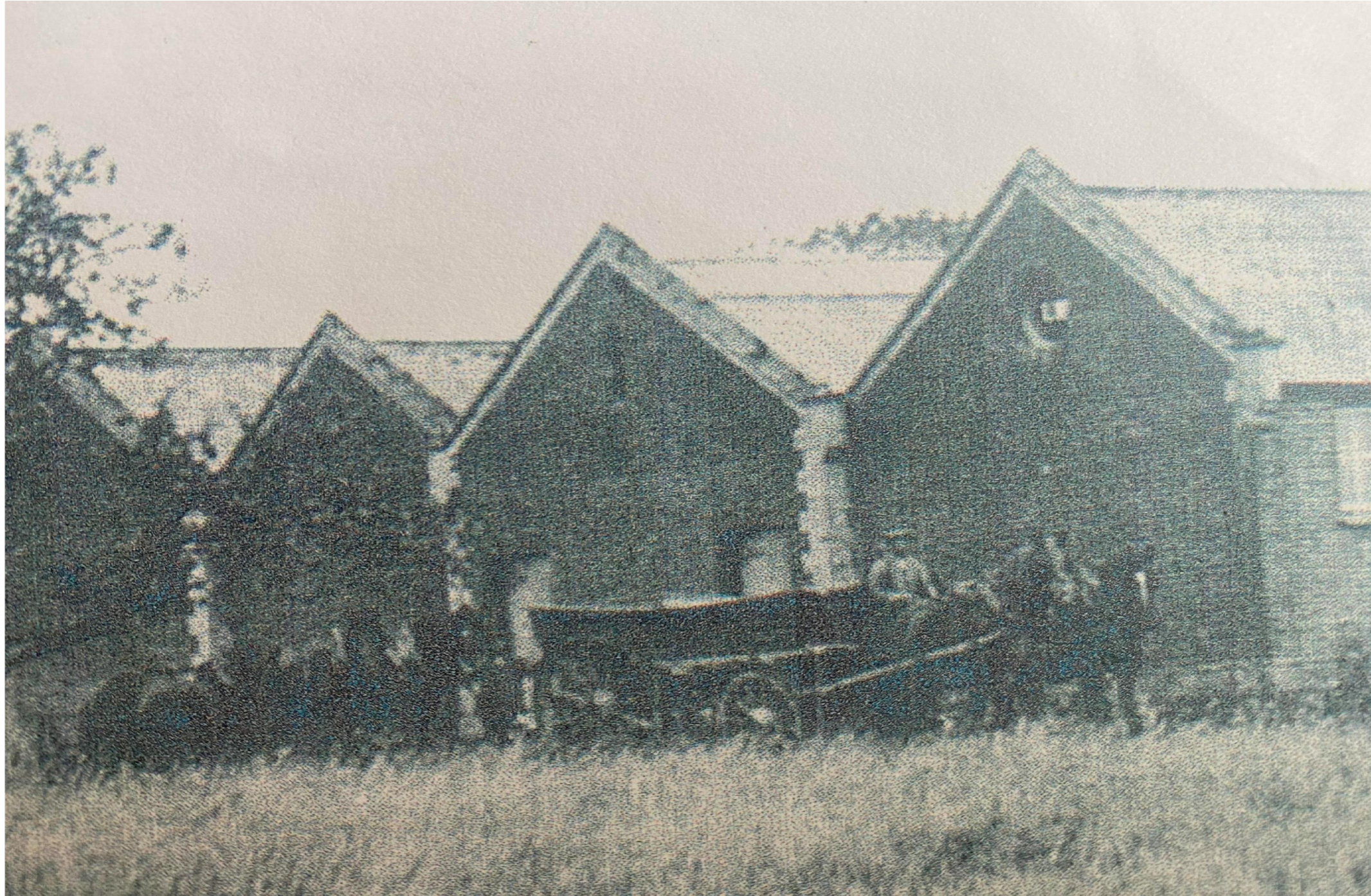
Photograph of proposed rooflight.



Location of proposed rooflight will face the valley gutter

#### 4.0 HISTORICAL PHOTOGRAPHS.

This original photograph shows the incorporation of rooflights in the proposed location of this Listed Building Consent.



**5.0 ROOFLIGHT LOCATION.**

This photograph shows the proposed location of the new rooflight.



**Asterix indicates the proposed location of the new rooflight.**

## 6.0 ROOFLIGHT TECHNICAL INFORMATION AND DRAWINGS.

The following documents provide technical information of the proposed rooflight.

### The Conservation Rooflight On the Rafter Roof Window Sizes and Prices

Before selecting your size, carefully read the 'Installation Overview' PDF.



**Structural Area**  
The central portion of the rafter - the base for the rooflight.  
Please measure the width accurately at the top edge of the rafter.



**Viewable Area**  
The clear opening through the rooflight frame.  
Please measure the width accurately at the top edge of the rafter.

**PLEASE NOTE: THE DIFFERENCE BETWEEN AN 'ON THE RAFTER' OR 'BETWEEN THE RAFTER' ROOF WINDOW IS IN THE INSTALLATION, NOT THE ROOFLIGHT SIZE, AND DEPENDS ON THE BUILD-UP OF YOUR ROOF.**

Structural dimensions (W) 412mm x (L) 520mm <b>CR06-1 - E921</b>	Structural dimensions (W) 463mm x (L) 622mm <b>CR07-2 - E932</b>	Structural dimensions (W) 565mm x (L) 725mm <b>CR01-2 - E940</b>	Structural dimensions (W) 565mm x (L) 1028mm <b>CR03-2 - E729</b>	Structural dimensions (W) 615mm x (L) 875mm <b>CR08-2 - E788</b>
Viewable dimensions (W) 212mm x (L) 320mm	Viewable dimensions (W) 263mm x (L) 422mm	Viewable dimensions (W) 365mm x (L) 525mm	Viewable dimensions (W) 365mm x (L) 828mm	Viewable dimensions (W) 415mm x (L) 675mm
Structural dimensions (W) 717mm x (L) 1102mm <b>CR09-2 - E851</b>	Structural dimensions (W) 717mm x (L) 1190mm <b>CR10-2 - E929</b>	Structural dimensions (W) 717mm x (L) 1303mm <b>CR14-2 - E959</b>	Structural dimensions (W) 717mm x (L) 1635mm <b>CR15-2 - E1114</b>	Structural dimensions (W) 1021mm x (L) 725mm <b>CR13-3 - E854</b>
Viewable dimensions (W) 517mm x (L) 828mm	Viewable dimensions (W) 517mm x (L) 900mm	Viewable dimensions (W) 517mm x (L) 1103mm	Viewable dimensions (W) 517mm x (L) 1428mm	Viewable dimensions (W) 821mm x (L) 625mm
Structural dimensions (W) 969mm x (L) 1102mm <b>CR11-3 - E957</b>	Structural dimensions (W) 1021mm x (L) 1190mm <b>CR13-3 - E1058</b>	Structural dimensions (W) 1021mm x (L) 1303mm <b>CR14-3 - E1112</b>	Structural dimensions (W) 1021mm x (L) 1635mm <b>CR15-3 - E1334</b>	
Viewable dimensions (W) 669mm x (L) 828mm	Viewable dimensions (W) 671mm x (L) 900mm	Viewable dimensions (W) 671mm x (L) 1103mm	Viewable dimensions (W) 671mm x (L) 1428mm	
Structural dimensions (W) 988mm x (L) 1114mm <b>E110 - E1121</b>	Structural dimensions (W) 988mm x (L) 1114mm <b>E110 - E1121</b>			
Viewable dimensions (W) 537mm x (L) 848mm	Viewable dimensions (W) 537mm x (L) 848mm			

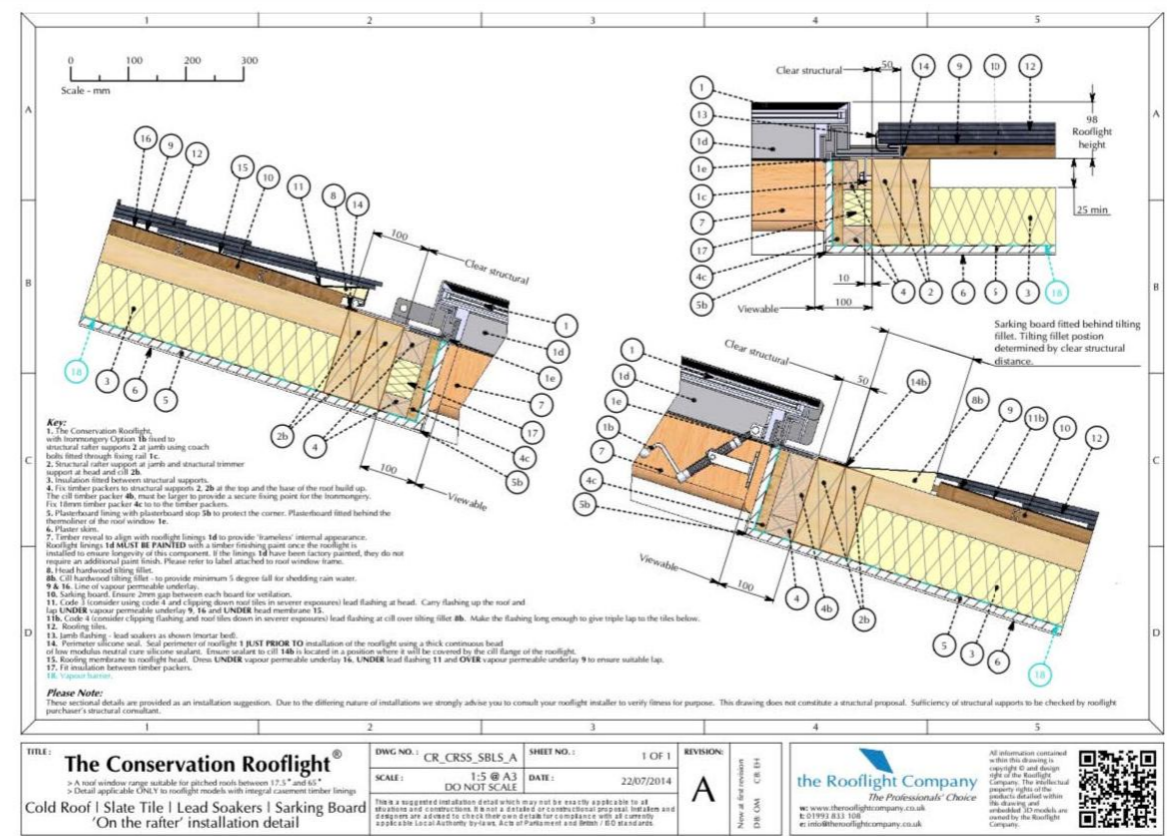
□ Egress Conservation Rooflights

Sections for viewable and structural dimensions can be found on our website.  
All prices exclude VAT and delivery.  
Please note flashing kits and accessories are sold separately.

Form QD344

Revision 7

Last Reviewed June 22



# Technical Data Sheet

## The Conservation Rooflight

### Product Description

The Conservation Rooflight is the original low profile skylight, combining the highest modern performance standards with an authentic traditional appearance. Favoured by English Heritage, the National Trust and Planning / Conservation Officers, it is available in a wide range of sizes, along with a Bespoke Design Service.

### Manufactured From

3mm mild steel with a protective polyester powder coating to BS EN ISO 12944.

The standard frame is finished in a textured semi gloss paint finish in black RAL 9005 (other RAL colour options are available).

All Conservation Rooflights have internal linings which have a multi coat paint finish applied and sealed with a white coating (to a 10% gloss level).

COASTAL: Please note, for properties that reside within 5km of the coastline or large estuary, we recommend calling our Customer Services Team on 01993 833155 to discuss an appropriate alternative of stainless steel. All Conservation rooflights are hot zinc sprayed.

### Testing



The Conservation Rooflight range is UKCA marked in accordance with BS EN 14351-1.

The Conservation Rooflight meets the requirements of BS6375-1:2015+A1:2016 exposure category 2000.

Effective 1 January 2021, we have transitioned to the UKCA / UKNI conformity markings as per UK legislative requirements. This replaces CE conformity marking within the UK. Please note this is of critical importance for customers planning to export our products to EU27 countries, who are responsible for ensuring compliance with relevant local export rules.



### Standard Glazing

4mm Toughened Outer.

16mm 90% Argon Cavity.

4mm Low Emissivity (Low e) Toughened inner.

Whole unit u-value (Uw) of 1.4 W/m<sup>2</sup>K in accordance with BS EN ISO 10077-2:2012.

Other glazing specifications are available upon request, contact us for more information.

### Sizes and Prices (for an 'on the rafter' installation)

CR06-1	(W) 412mm x (L) 520mm	£621
CR07-2	(W) 463mm x (L) 622mm	£632
CR01-2	(W) 565mm x (L) 725mm	£640
CR03-2	(W) 565mm x (L) 1028mm	£729
CR08-2	(W) 615mm x (L) 875mm	£788
CR09-2	(W) 717mm x (L) 1028mm	£851
CR10-2	(W) 717mm x (L) 1180mm	£929
CR14-2	(W) 717mm x (L) 1333mm	£959
CR15-2	(W) 717mm x (L) 1635mm	£1114
CR11-3	(W) 869mm x (L) 1028mm	£957
CR01-3	(W) 1021mm x (L) 725mm	£854
CR13-3	(W) 1021mm x (L) 1180mm	£1058
CR14-3	(W) 1021mm x (L) 1333mm	£1112
CR15-3	(W) 1021mm x (L) 1635mm	£1334
E1LG	(W) 888mm x (L) 1114mm	£1121
E1RG	(W) 888mm x (L) 1114mm	£1121

Prices exclude accessories, VAT and delivery.

Sizes above are clear structural opening dimensions for an 'on the rafter' installation. Please consult with us for 'between the rafter' sizes.

All prices are correct at the time of going to press.