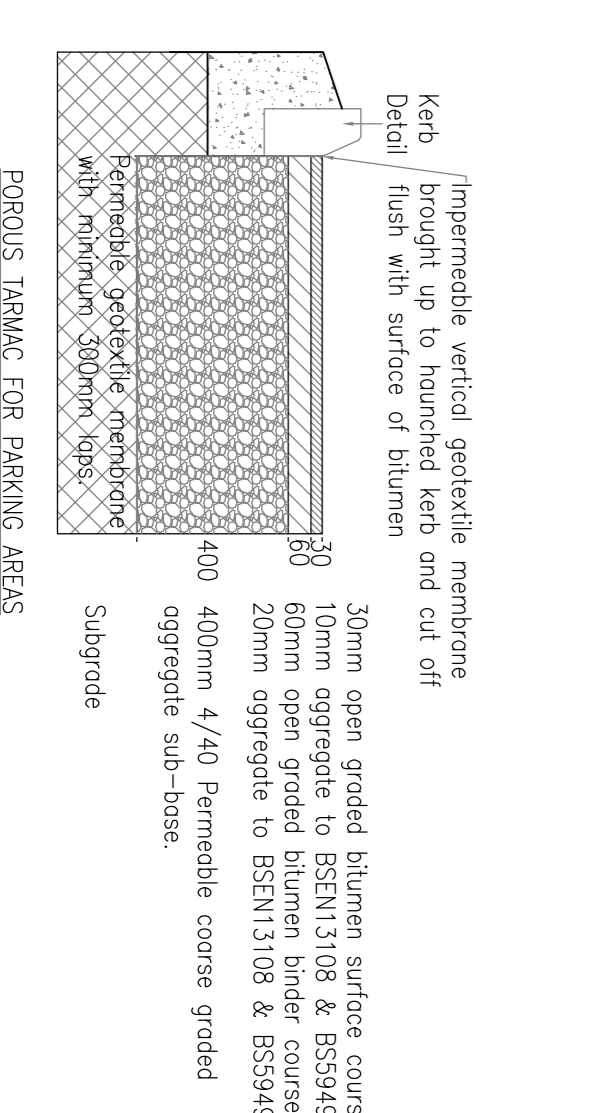
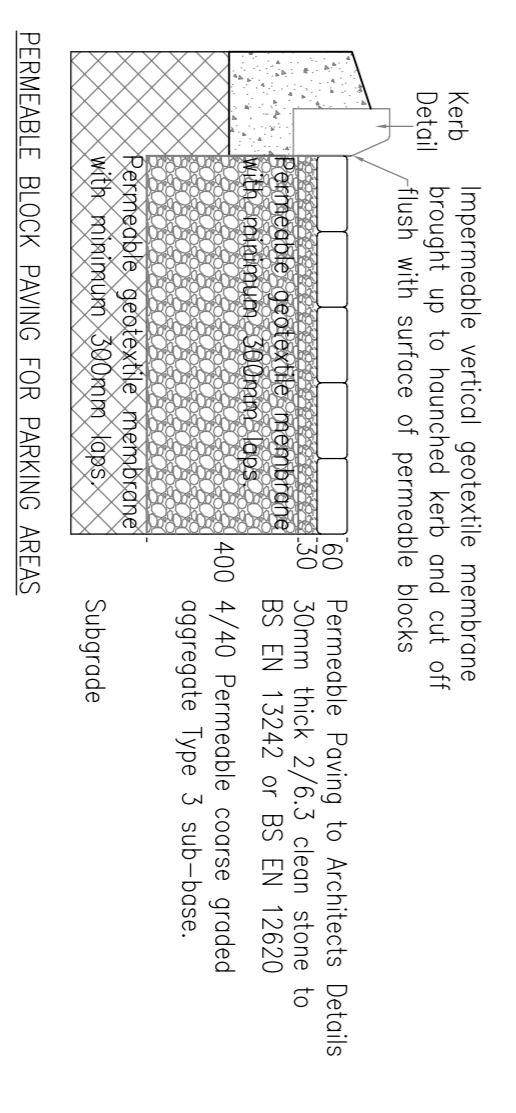
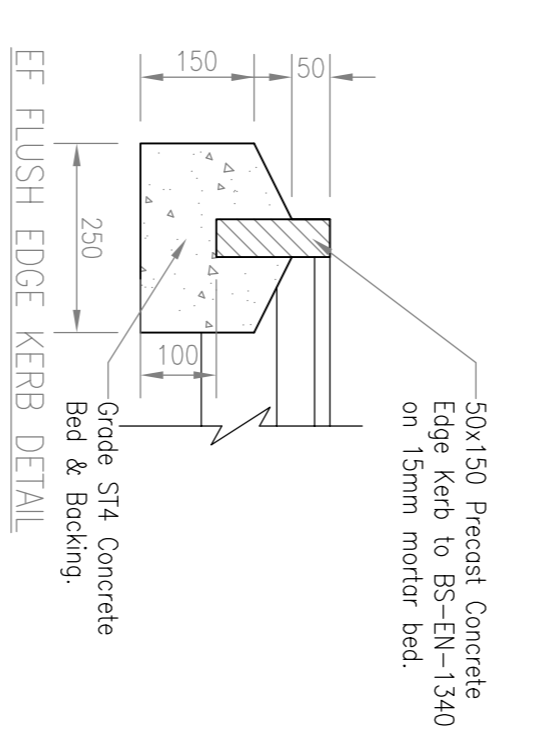
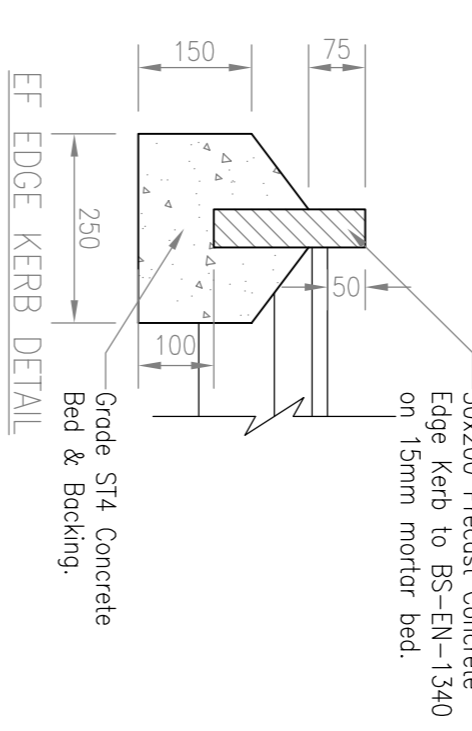
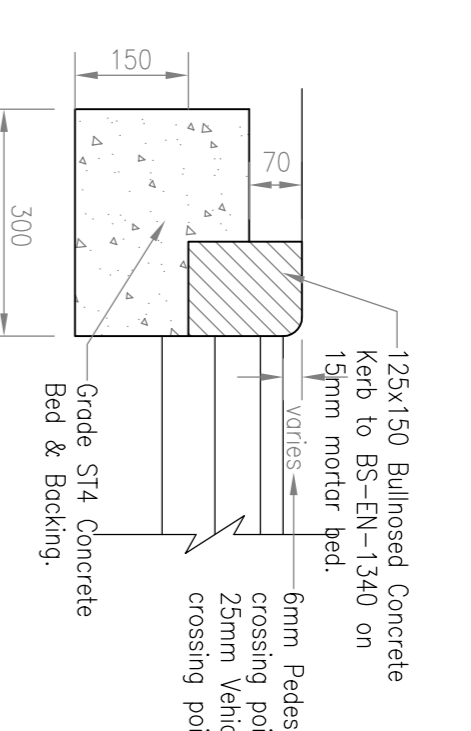
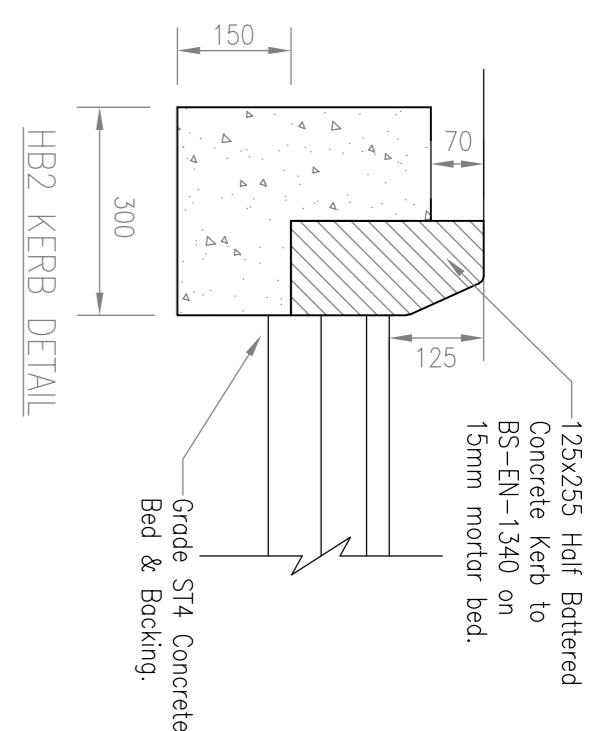




**Buckstones Road**

**172**



**NOTES**

- Do not scale from this drawing.
- This drawing is to be read in conjunction with all relevant Architects and Engineers drawings and specifications.
- All works and materials to be in accordance with current British Standards and Building Regulations.
- The Architect's site plan has been used as a base for this drawing. Please refer to the latest site plan.
- Pipes with <math><300\text{mm}</math> cover under non-vehicle areas and <math><300\text{mm}</math> cover under vehicle areas are to be encased in concrete as shown and the pipe bedding and all up protection on the drawing. Please refer to manufacturers details for pipe material specific requirements. Adoptable sewers will require a minimum of 120mm cover in accordance with sewerage undertakers requirements.
- For any works on Public Sewers refer to Statutory Undertakers Drawings.
- For drainage details refer to Build Vision 900 Series drawings.
- All bag drains indicated with a wavy line to be removed or grouted with F74/Cement/sand minimum ratio of 1:2:1.
9. Pipe, SPP & Synthetic locations and sizes to be confirmed by the Architect.
- Foul or traps to be provided on all gullies and access chambers.
- Access fittings to be provided on all internal drainage.
- Drain Connection  
Type 1 (min 150x100mm)  
Type 2 (min 225x100mm)  
Type 3 (min 225x100mm)  
Type 4 (min 225x100mm)
- All below ground soil foul drainage to be minimum 100mm diameter unless otherwise noted.
- MIOC includes 3000 min access chamber.
- MIOC indicates 4750 Polypropylene Inspection Chamber.
- All sewers to have concrete or class 'S' bed and surround in accordance with pipe bedding details drawing.
- All pipes to be 4-35-01 and to be like marked structural walled plastic, clay or concrete pipes suitable for use in highways with BUILDING REGULATIONS.

**EXISTING DRAINAGE ON SITE TO BE INVESTIGATED/SURVEIED**

**PRELIMINARY  
NOT FOR CONSTRUCTION.**

Rev	Date	By	Detail/Remarks	Preliminary Issue
P1	21/05/23	SR		

**Project**  
Buckstones Road  
Show

**Client**  
J Walker Homes Ltd.

**Drawing**  
Drainage Layout

Number	1315-900	Rev	P1
Scale	1:100@A1	Drawn	SVG
		Checked	WJ
		Date	May 2023

**Build Vision  
Consulting Engineers**

Middle Cottage, Ben Koye Row, Holmfirth HD9 1EF  
Mobile Tel: 07799 823040  
email: sarah@bvis.co.uk