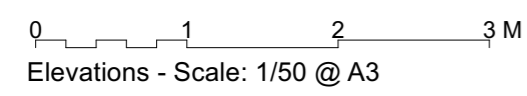
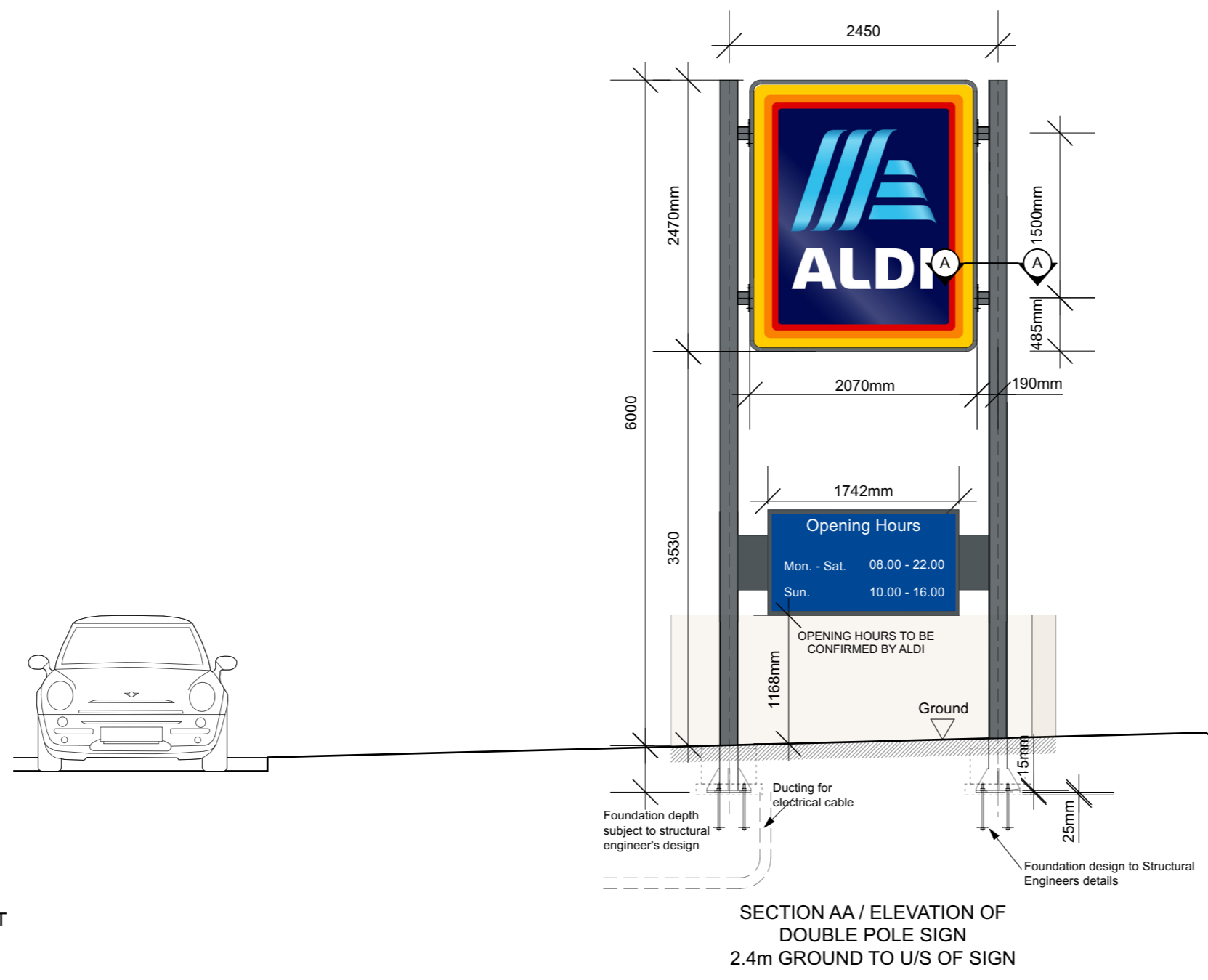
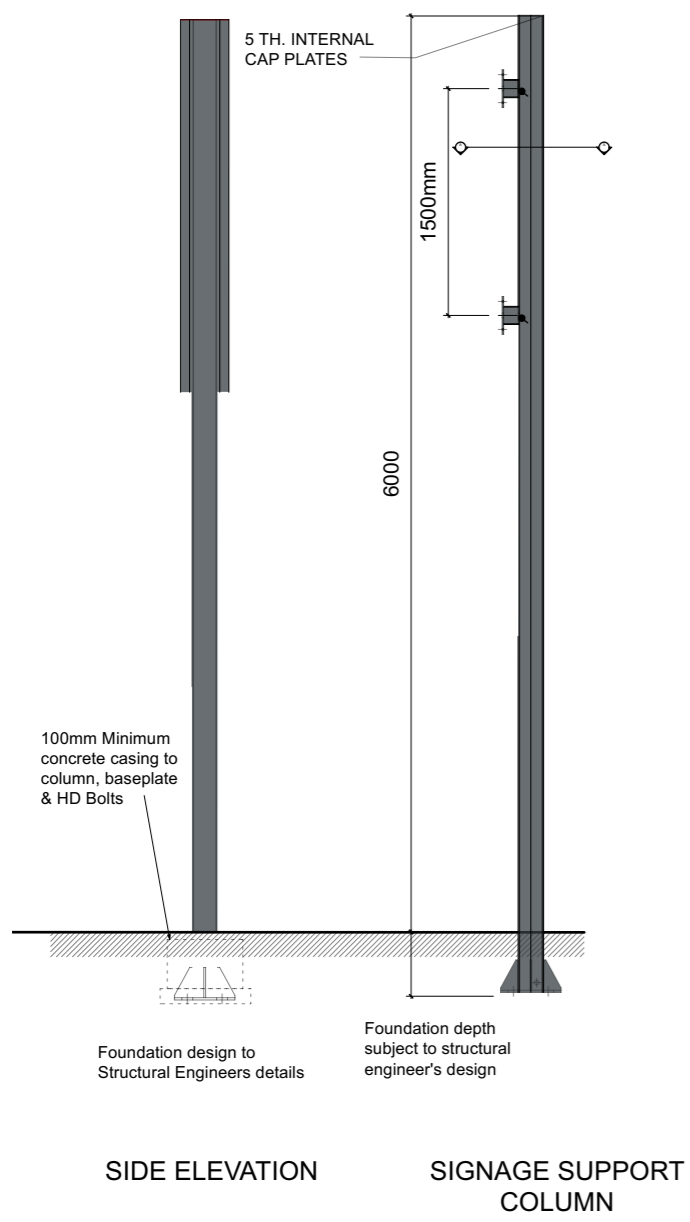
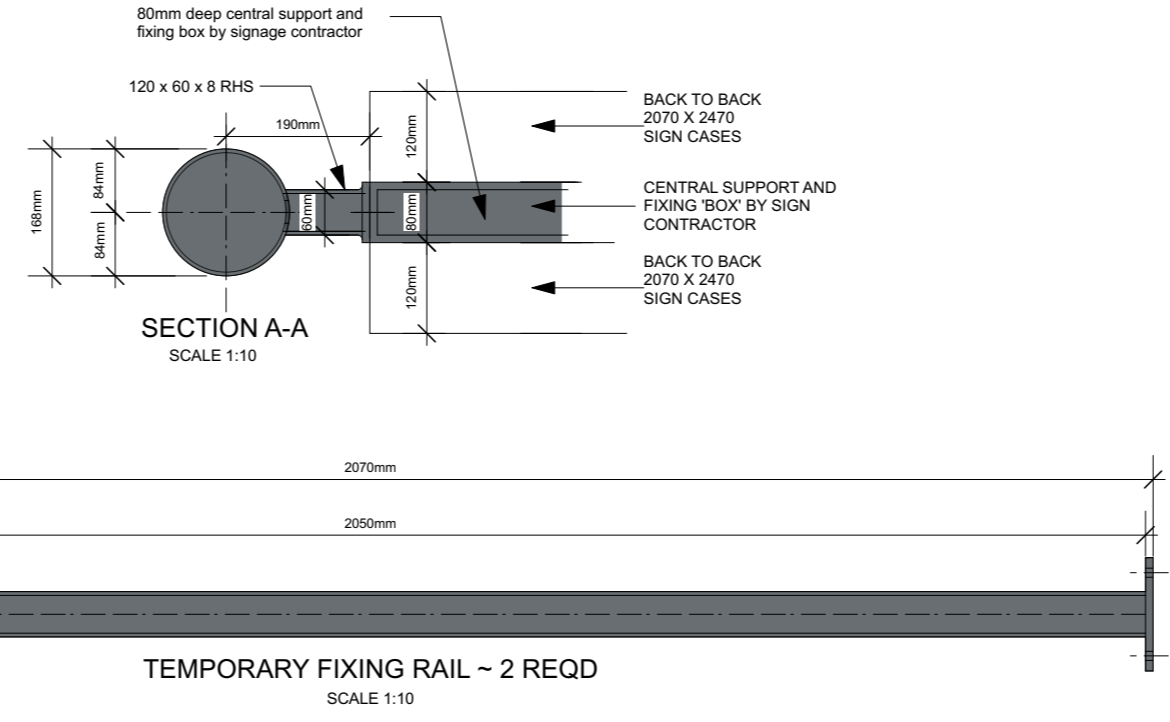
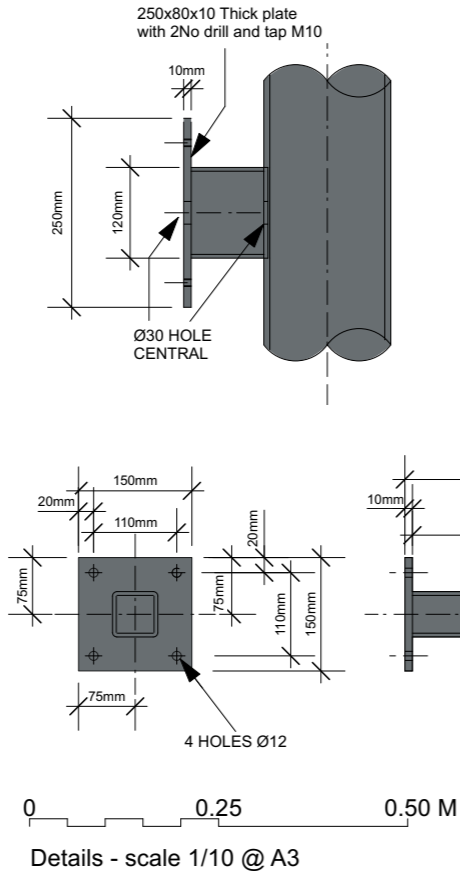
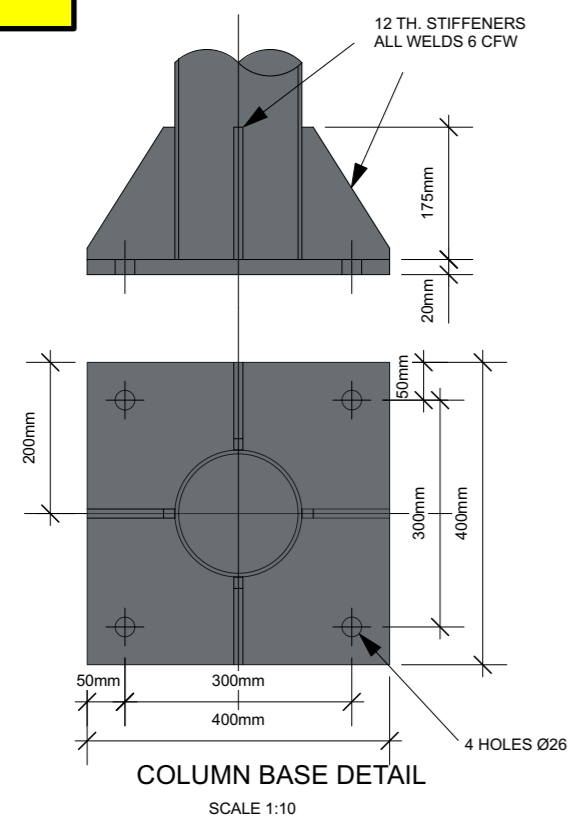


C



DOUBLE FACED DOUBLE POST MOUNTED SITE SIGN

2no: 2470 x 2070mm (8507 LED Type) fixed back to back on central support "box". Letter height 370mm text width 1155mm

Central support "box" to be supplied and installed by sign contractor to match sign exactly in size and profile and to be aluminium and finished RAL 7016 Anthracite to match sign.

Site Entrance Sign 6.000m from ground level to top of sign and posts.
Steel sign posts by sign contractor or canopy contractor, galvanised and coated RAL 7016 Anthracite.

High quality fabricated aluminium signcases, finished RAL 7016 Anthracite. Sign panel is Polycarbonate with screen-printed 5 colour foil logo.

Sign fully internally illuminated by LED.

Supply cable to be connected to signage by signage contractor. Underground cables by electrical contractor.

No cables or junction boxes to be visible above ground level or fixed to sign.

Foundation design shown in accordance with Structural Engineers requirements.

OPENING HOURS SIGN

Lower 'showcase' sign by signage contractor including fixing 'wings' bolted to posts.

Overall dimensions inc. frame	1742 x 960mm
Typface	Aldi Sud CE Regular
Panel Colour	Pantone 287 Blue
Text Colour	White
Cap Height:	100mm
Length of 'Opening Hours'	902mm

Kendall Kingscott
Chartered Architects
Chartered Building Surveyors
Interior Designers
CDM Services

Project: Aldi, Totton, Salisbury Rd
Client: Aldi Stores Ltd
Glentworth Court, Lime Kiln Close
Stoke Gifford, Bristol BS34 8SR
+44 (0)117 931 2062
www.kendallkingscott.co.uk

Scale: 1:250 ISO A2
Paper Size: 200550 AD Consent Master.vwx
© Copyright

Rev Date: 04/05/23
By: DG MW
Drawing Title: 6m Pole Sign_Advert Consent
Project Number: 200550-1411
Drawing Number: P01
Revision: P01
Date: 04/05/2023
Drawn: DG
Checked: MW
Purpose/Status: LEGAL

Check all dimensions and levels on site



Project	Aldi, Totton, Salisbury Rd
Client	Aldi Stores Ltd
Project Number	200550-1411
Drawing Number	P01
Revision	P01
Date	04/05/2023
Drawn	DG
Checked	MW
Purpose/Status	LEGAL

Only to be used on the site for which designed. The electronic transmission of design information contained in this drawing is carried out entirely at the User's risk and Kendall Kingscott Ltd. shall have no liability for any errors or inaccuracies arising therefrom. The production of amended or updated information from the user is the responsibility of the user and Kendall Kingscott Ltd. shall have no responsibility in respect thereof whatsoever.