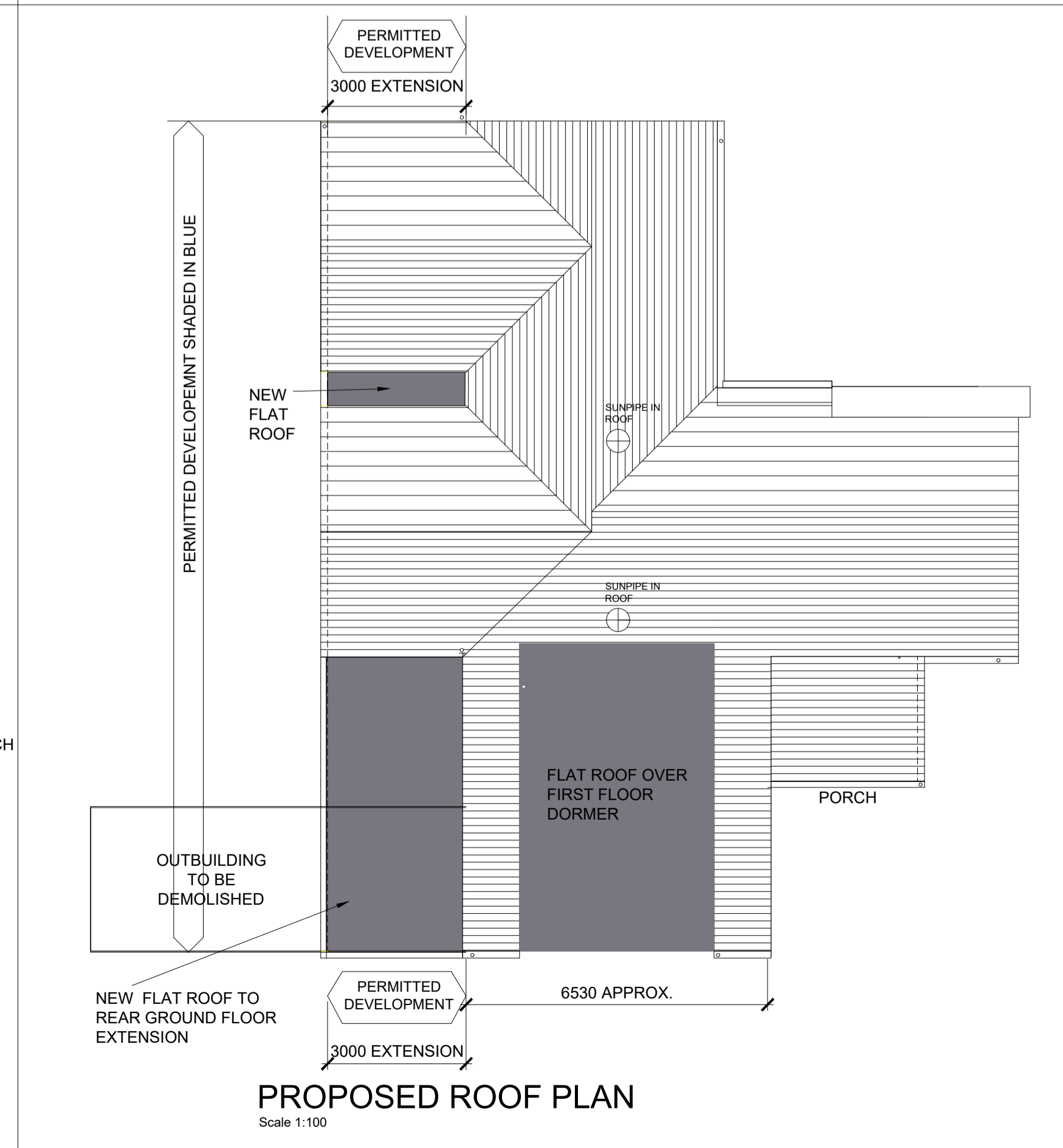
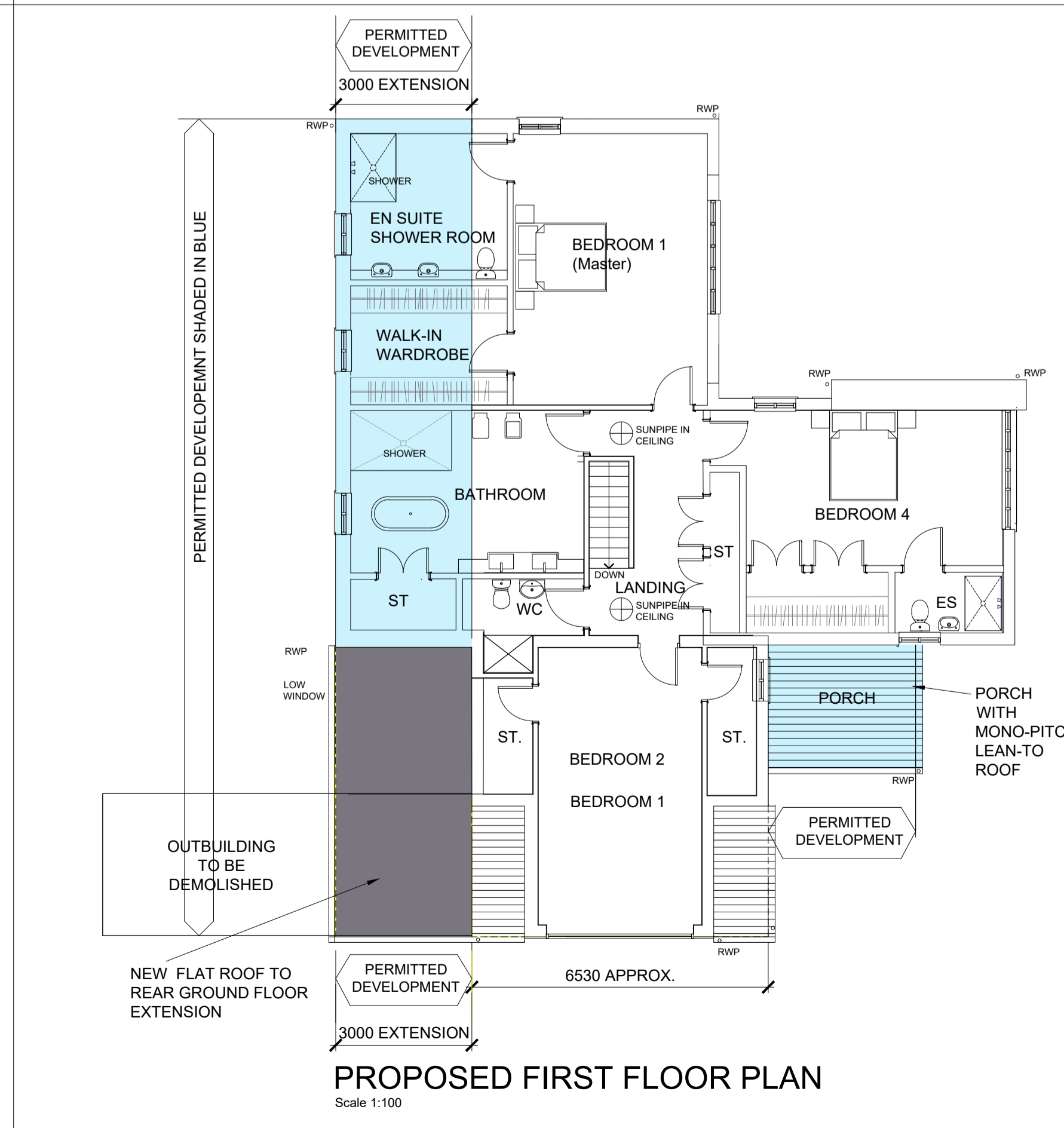
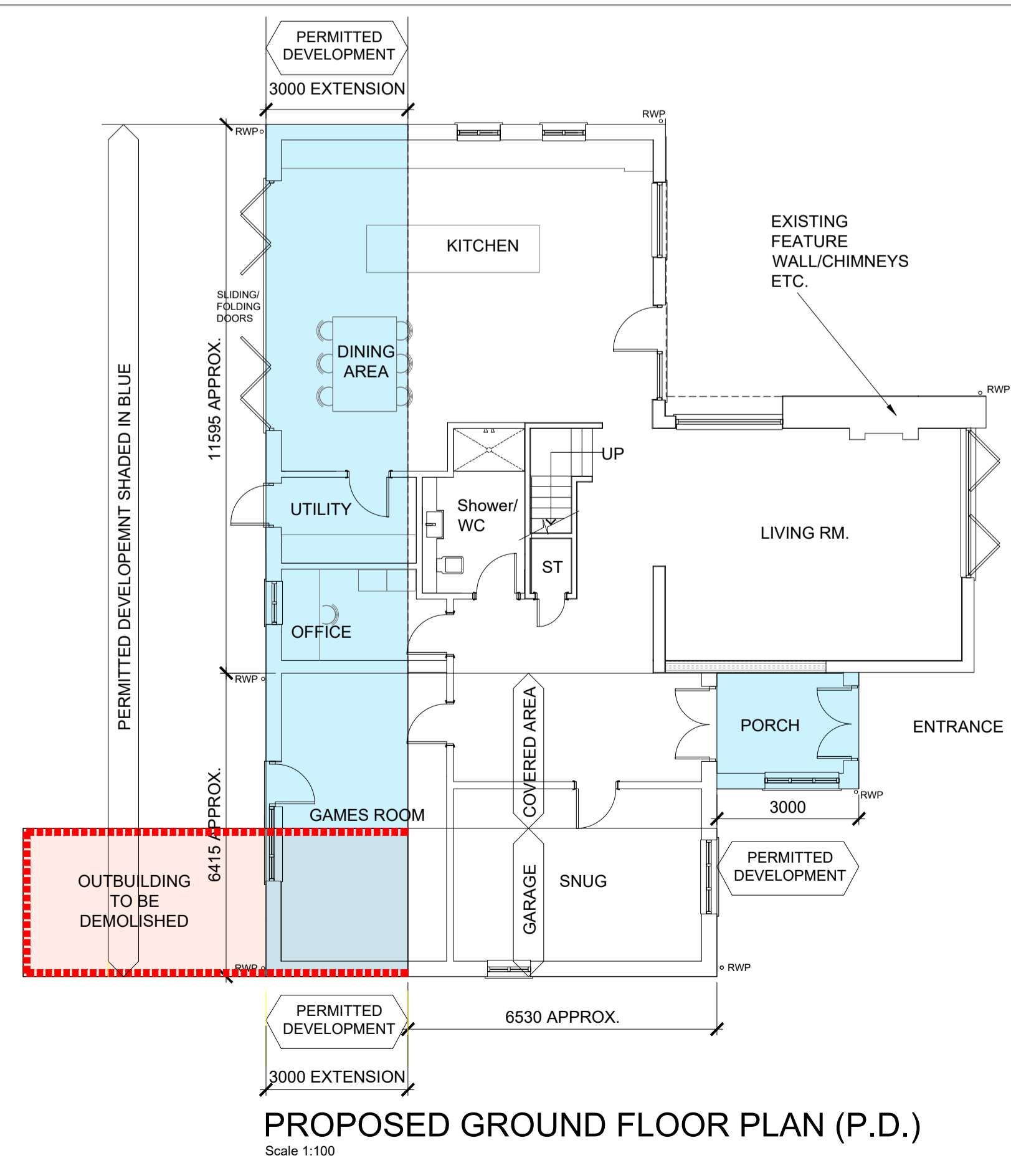
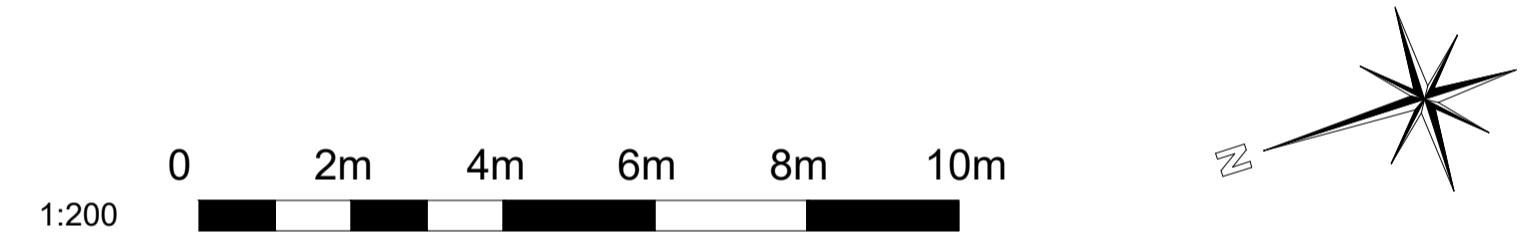


Proposed External Materials / Finishes:

- Pitched Roofs: Plain Tiles
- Flat Roofs: Single Ply Membrane
- Ground Floor Walls: Facing Brickwork
- First Floor Walls: Facing Brickwork/
Horizontal Boarding where shown
- Windows/External Doors: White uPVC
- Rainwater Goods: Black uPVC



REVISIONS			
REV	DATE	NOTES	INITIAL
P1	23-25.05.23	Preliminary drawing.	HP

STATUS
Planning

Notes

Howard Fairbairn MHK
chartered architects

Howard Fairbairn Project Services Ltd
Lambourn House, Redlands
Coulston
Surrey
CR5 2HT

Telephone
020 8665 5252

Website
hfmhk.com

Email
croydon@hfmhk.com

CLIENT	ACJ Electrical Services Ltd.		
PROJECT	Three Pines, Gibbs Hill, Nettlestead, Maidstone ME18 5HS		
TITLE	Proposed Floor & Roof Plans and Elevations		
DRAWN BY	HP	CHECKED BY	SK
SCALE	1:200@A3	DATE	May 2023
CAD REF:	6870		

DWG N°. 6870 - PL02 REV N°. P1