

Technical Data Sheet

The Conservation Rooflight®

the
Rooflight
Company

Product Description

The Conservation Rooflight® is the original low profile skylight, combining the highest modern performance standards with an authentic traditional appearance. Favoured by English Heritage, the National Trust and Planning / Conservation Officers, it is available in a wide range of sizes, along with a Bespoke Design Service.

Manufactured From

3mm mild steel with a protective polyester powder coating to BS EN ISO 12944.

The standard frame is finished in a textured semi gloss paint finish in black RAL 9005 (other RAL colour options are available).

All Conservation Rooflights® have internal linings which are pre-treated and sealed with a white coating (to a 10% gloss level).

COASTAL: Please note, for properties that reside within 5km of the coastline or large estuary, we recommend calling our Customer Services Team on 01993 833155 to discuss an appropriate alternative of stainless steel or steel treated with a hot Zinc Spray coating.

Testing



EN 14351-1:2006+A1:2010

The Conservation Rooflight® range is CE marked in accordance with EN14351-1:2006+A1:2010.

Part L compliant and tested for water tightness to EN 1027:2000 - met class E1050.

The Conservation Rooflight® meets the requirements of BS6375-1:2009 exposure category 2000.



Standard Glazing

4mm SGG Planilux Toughened Outer
16mm 90% Argon Cavity

4mm SGG Planitherm Total + (Low E)
Toughened Inner

Whole unit u-value (Uw) of 1.5 W/m²K in accordance with EN ISO 10077-2:2012.

Other glazing specifications are available upon request, contact us for more information.

Sizes and Prices (for an 'on the rafter' installation)

CR06-1	(W) 412mm x (L) 520mm -	£508
CR07-2	(W) 463mm x (L) 622mm -	£524
CR01-2	(W) 565mm x (L) 725mm -	£510
CR03-2	(W) 565mm x (L) 1028mm -	£574
CR08-2	(W) 615mm x (L) 875mm -	£623
CR09-2	(W) 717mm x (L) 1028mm -	£679
CR10-2	(W) 717mm x (L) 1180mm -	£733
CR14-2	(W) 717mm x (L) 1333mm -	£751
CR15-2	(W) 717mm x (L) 1635mm -	£877
CR01-3	(W) 1021mm x (L) 725mm -	£678
CR11-3	(W) 869mm x (L) 1028mm -	£755
CR13-3	(W) 1021mm x (L) 1180mm -	£835
CR14-3	(W) 1021mm x (L) 1333mm -	£877
CR15-3	(W) 1021mm x (L) 1635mm -	£1061
E1LG	(W) 888mm x (L) 1114mm -	£877
E1RG	(W) 888mm x (L) 1114mm -	£877

Prices exclude accessories, VAT and delivery.
Sizes above are for an 'on the rafter' installation.
Please consult with us for 'between the rafter' sizes.

All prices are correct at the time of going to press.

Pitch

Suitable for pitched roof installations with a 17.5-65° roof pitch.

Opening Options

Manual hand winders

Available in brass or chrome with opening distances of either 150mm or 300mm.

Manual pole winder

And winding crank for out of reach opening. Available in brass or chrome with opening distances of 150mm or 300mm. Poles are available in varying lengths from 1m to 3m.

Motors

Motorised opening options are available for out of reach rooflights and can be controlled by a switch or remote. Contact us for more information

Fixed Shut

A fixing bracket for a fixed shut roof window. The fixing bracket is white as standard.

Optional Extras and Blinds

Roller blinds available in 71 colours.

Pleated blinds available in 14 colours.

Rain sensors, temperature sensors and other accessories are available on request. Please consult with us directly for compatibility.

Flashing Kits

The Flashing Kit can be used for 'on the rafter' installations only, where the roof depth (above the rafter) does not exceed 75mm. This will result in the roof window sitting proud of the roof tiles.

For more information see Flashing Kit in Sizes Options and Prices.

For 'between the rafter' a (flush finish) installation it is recommended that Code 4 Lead is used.

Lead Time

The Conservation Rooflight®. Subject to availability. The usual lead time is 5 working days for standards. Egress roof windows are 14 days. Please call if you require sooner.

Installation

The Conservation Rooflight® Installation Manual and Installation Drawings are available to download from our website.

BIM Objects can also be downloaded.

Warranty

Our steel rooflights and roof windows are guaranteed for 12 months in accordance with our Terms and Conditions.

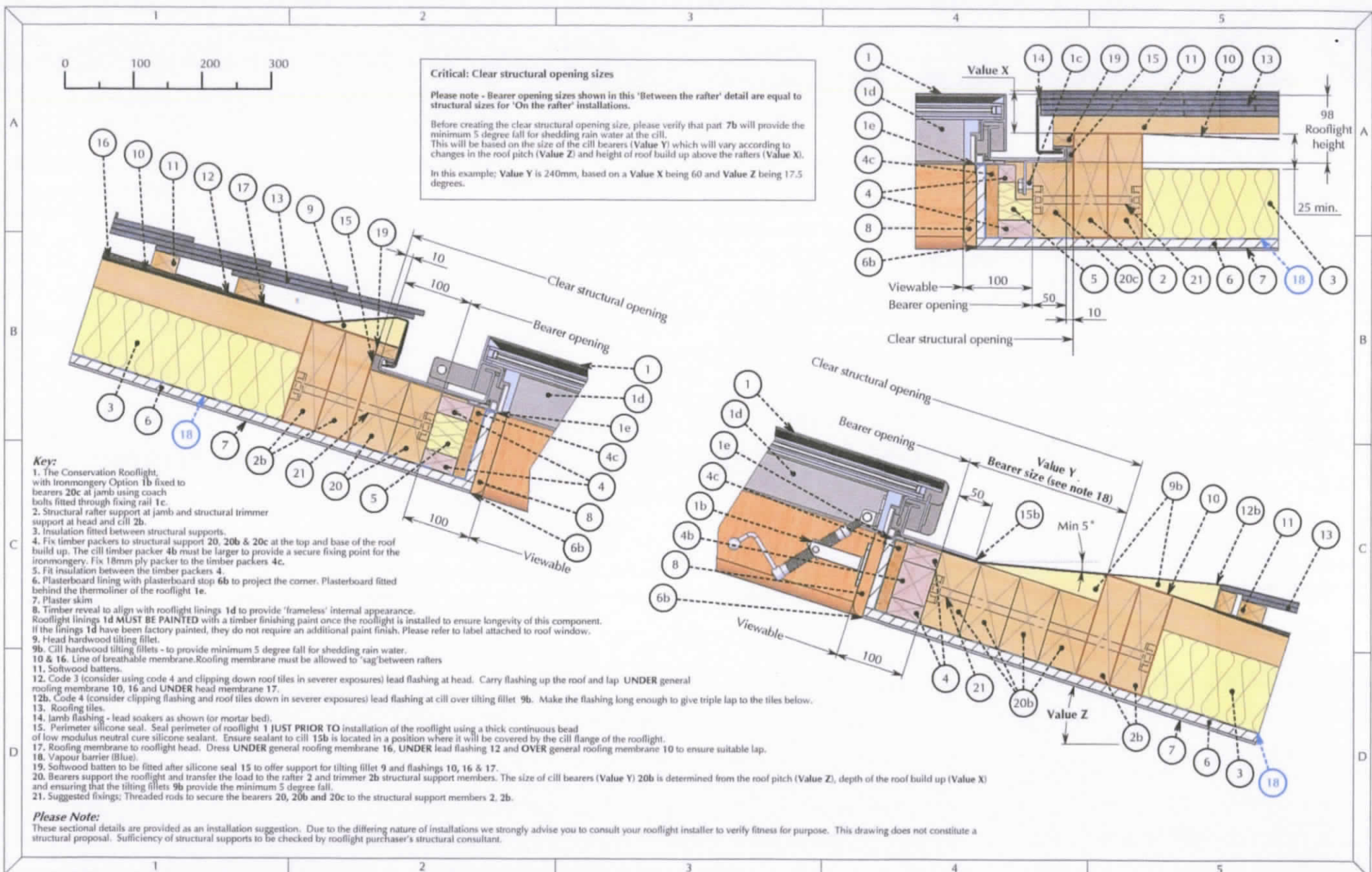
Upon product registration with us, this guarantee can be extended as set out in our terms and conditions, provided that the appropriate products have been installed to suit their location and that these are regularly maintained, with these actions recorded in accordance with our maintenance instructions.



Visit www.therooflightcompany.co.uk
or call us today on **01993 833108** for more
information.

the
Rooflight
Company

July 2019-V3



TITLE: **The Conservation Rooflight®**
 > A roof window range suitable for pitched roofs between 17.5° and 65°
 > Detail applicable ONLY to rooflight models with integral casement timber linings

Cold Roof | Slate Tile | Lead Soakers
 'Between the rafter' installation detail

DWG NO.:	CR_CRSF_LS_B	SHEET NO.:	1 OF 1	REVISION:	
SCALE:	1:5 @ A3 DO NOT SCALE	DATE:	06/02/2014		
This is a suggested installation detail which may not be exactly applicable to all situations and constructions. It is not a detailed or constructional proposal. Installers and designers are advised to check their own details for compliance with all currently applicable Local Authority by-laws, Acts of Parliament and British / ISO standards.					

B

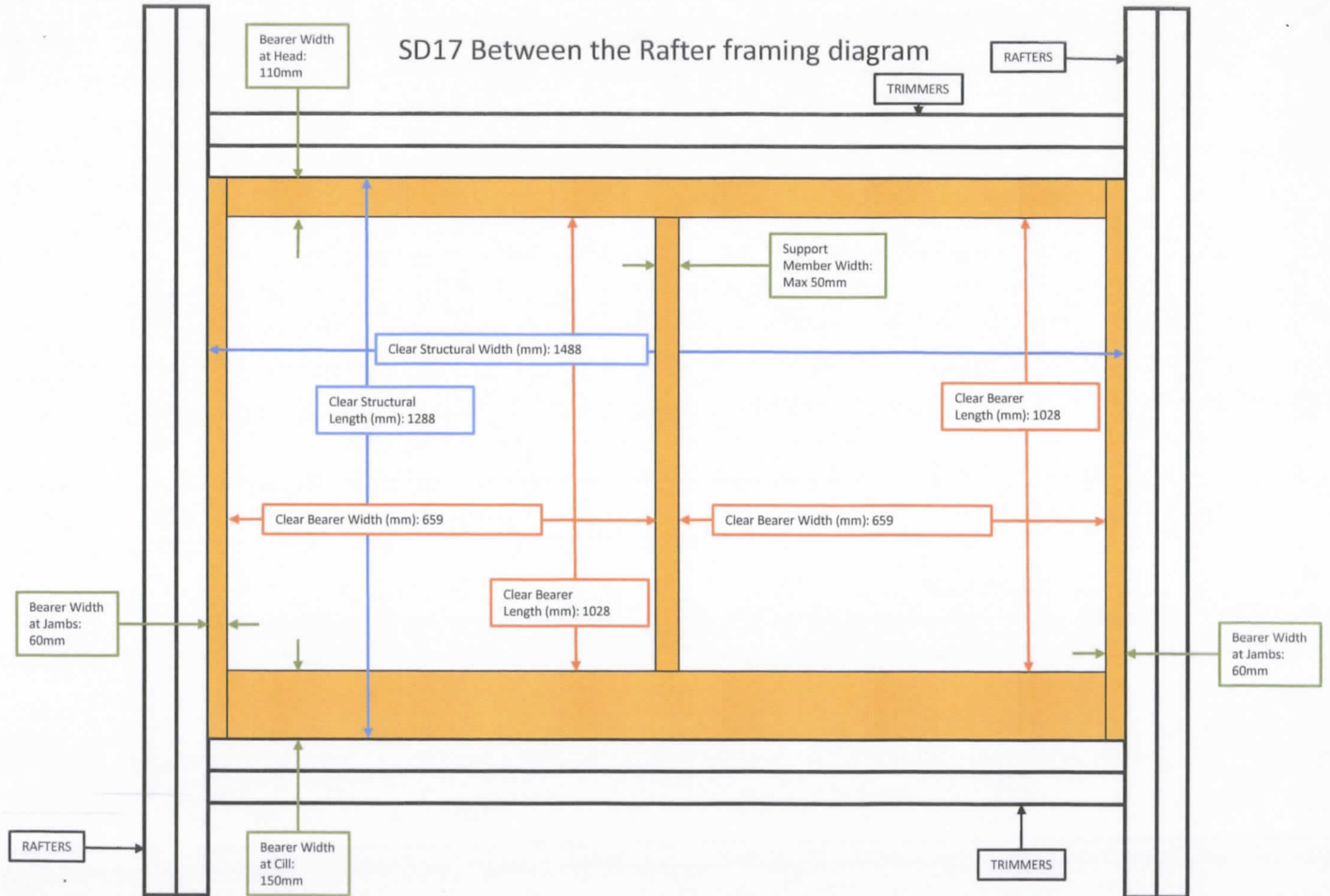
DB:EH
 CB:PD
 Packer detail revised

the Rooflight Company
The Professionals' Choice

W: www.therooflightcompany.co.uk
 T: 01993 833 100
 E: info@therooflightcompany.co.uk

All information contained within this drawing is copyright © and design right of the Rooflight Company. The intellectual property rights of the products detailed within this drawing and embedded 3D models are owned by the Rooflight Company.


SD17 Between the Rafter framing diagram



Opening Options for the Conservation Rooflight®

1. Manual - Within Hand Reach

The manual opening operation requires the operator to be able to reach the cill of the roof window. You can purchase a hand winder from the options below.



Option J -
Chrome Plated hand winder 150mm £39

Option B -
Chrome Plated hand winder 300mm £44



Option A -
Brass hand winder 150mm £44

Option E - Brass hand winder 300mm £49



Option W -
Anodised aluminium wheel on Chrome Plated hand winder 150mm £55



Option Y -
Black wheel on brass hand winder 150mm £55

3. Motorised

We offer a number of different motors for the Conservation Rooflight®. Motors are installed at the cill of the roof window. You can purchase a motor and a switch from the options below.



Option Au-Max
Electric Linear actuator 230v 300mm £167


KA34-350	MAX	MAC	Supermaster	Rack
24v	230	230v/24v	230v/24v	230v/24v
350mm	300mm	150mm ONLY	420/600mm	180mm



Option MAC
Motor 230v, 24v 150mm only £193



Option Super-master
Motor 230v, v24v 450mm £255




Switch
£37

The Conservation Rooflight®

CR1		*	*		
CR1/3	*	*	*		
CR2/1		*			*
CR3		*	*		
CR6		*			*
CR7		*			*
CR8		*	*		
CR9	*	*	*		
GR10	*	*	*		
CR11	*	*	*		
CR13	*	*		*	
CR14		*		*	
CR14/2	*	*	*	*	
CR15		*		*	
CR15/2	*	*	*	*	

2. Manual - Out of Hand Reach

The 'out of hand reach' can be installed if the operator cannot reach the cill of the roof window. You will need to purchase a winding pole and a winding crank from the options below.




Option L -
Chrome Plated pole winder 150mm £39

Option C -
Chrome Plated pole winder 300mm £44




Option K -
Brass pole winder 150mm £44


Option D -
Brass pole winder 300mm £49




Option T -
Anodised Pole Winder 500mm £77



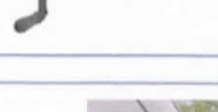
Option F -
Aluminium 1m length pole £33



Option G -
Aluminium 1.5m length pole £39



Option H -
Aluminium 2m length pole £44



Option I -
Aluminium 1.7m-30 length pole £49

4. Fixed Shut

The Conservation Rooflight® can also be fixed shut. You can purchase a fixing bracket for £6. The bracket must be installed to the cill of the roof window (see image to the right).



5. The Conservation Egress / Access Rooflight

This is only available as manually operated. The hand winders are available in brass and chrome from the options below. Motors cannot be installed on to these windows as they are designed to be installed as a means of access or entry into a room.



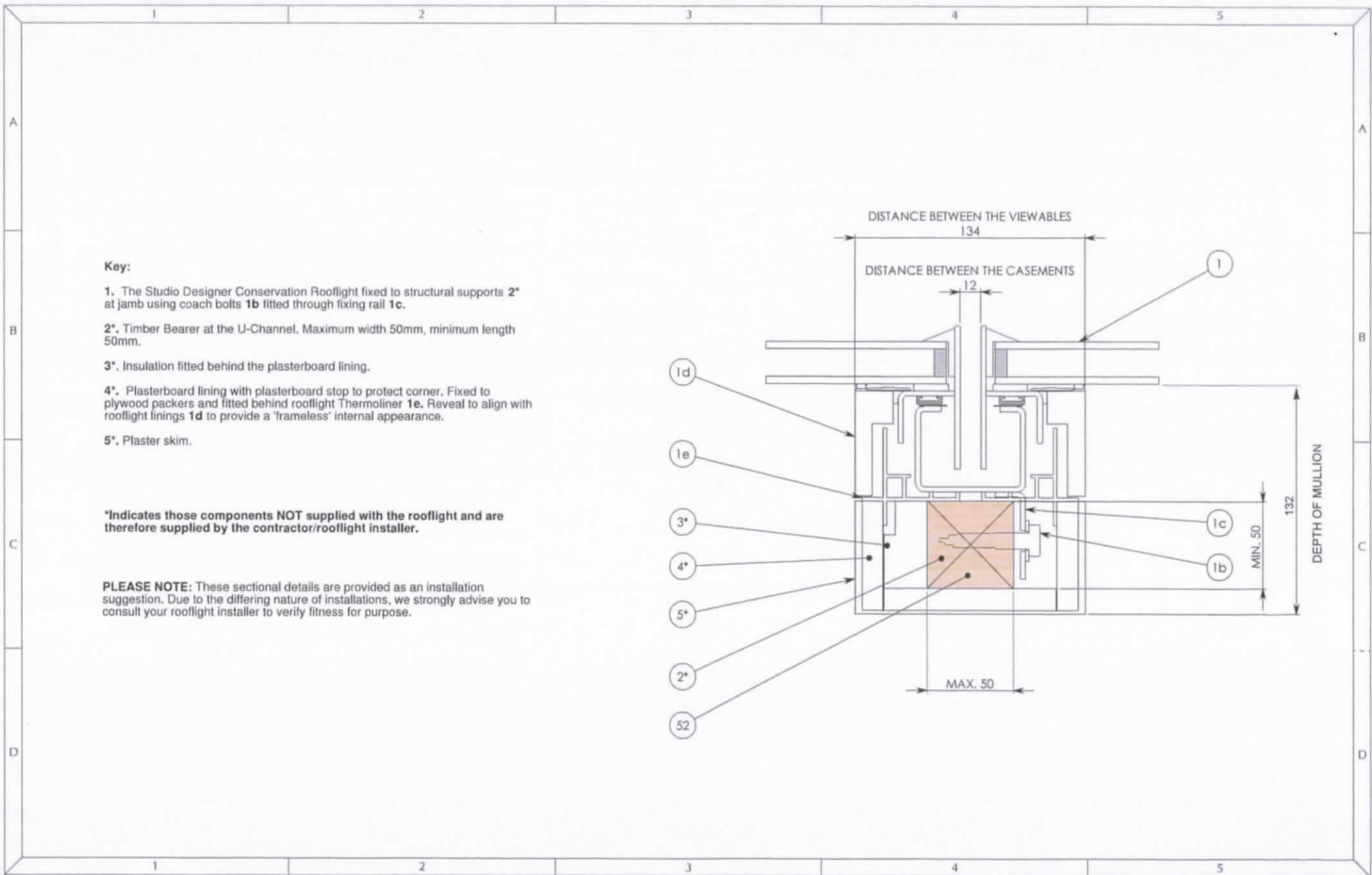
Option Q -
Chrome Plated hand winder 300mm £60

Only for use with the Conservation Egress Rooflight®



Option Z -
Brass hand winder 300mm £65

Only for use with the Conservation Egress Rooflight®



Key:

- 1. The Studio Designer Conservation Rooflight fixed to structural supports 2* at jamb using coach bolts 1b fitted through fixing rail 1c.
- 2*. Timber Bearer at the U-Channel. Maximum width 50mm, minimum length 50mm.
- 3*. Insulation fitted behind the plasterboard lining.
- 4*. Plasterboard lining with plasterboard stop to protect corner. Fixed to plywood packers and fitted behind rooflight Thermoliner 1e. Reveal to align with rooflight linings 1d to provide a 'frameless' internal appearance.
- 5*. Plaster skim.

*Indicates those components NOT supplied with the rooflight and are therefore supplied by the contractor/rooflight installer.

PLEASE NOTE: These sectional details are provided as an installation suggestion. Due to the differing nature of installations, we strongly advise you to consult your rooflight installer to verify fitness for purpose.

TITLE:
The Studio Designer Conservation Rooflight®
 > A roof window range suitable for pitched roofs between 17.5° and 65°
 > Detail applicable ONLY to rooflight models with integral casement timber linings
Optional U-Channel linking Installation Detail

DWG NO. : E2983_001ENQ_A	SHEET NO. : 1 OF 1	REVISION: A
SCALE : 1:2 @ A3 DO NOT SCALE	DATE : 13/10/2015	DB: SS CB: KS
<small>This is a suggested installation detail which may not be exactly applicable to all situations and constructions. It is not a detailed or constructional proposal. Installers and designers are advised to check their own details for compliance with all currently applicable Local Authority by-laws, Acts of Parliament and British / ISO standards.</small>		

the Rooflight Company
The Professionals' Choice
 www.therooflightcompany.co.uk
 t: 01993 833 108
 e: info@therooflightcompany.co.uk

All information contained within this drawing is copyright © and design right of the Rooflight Company. The intellectual property rights of the products detailed within this drawing and embedded 3D models are owned by the Rooflight Company.

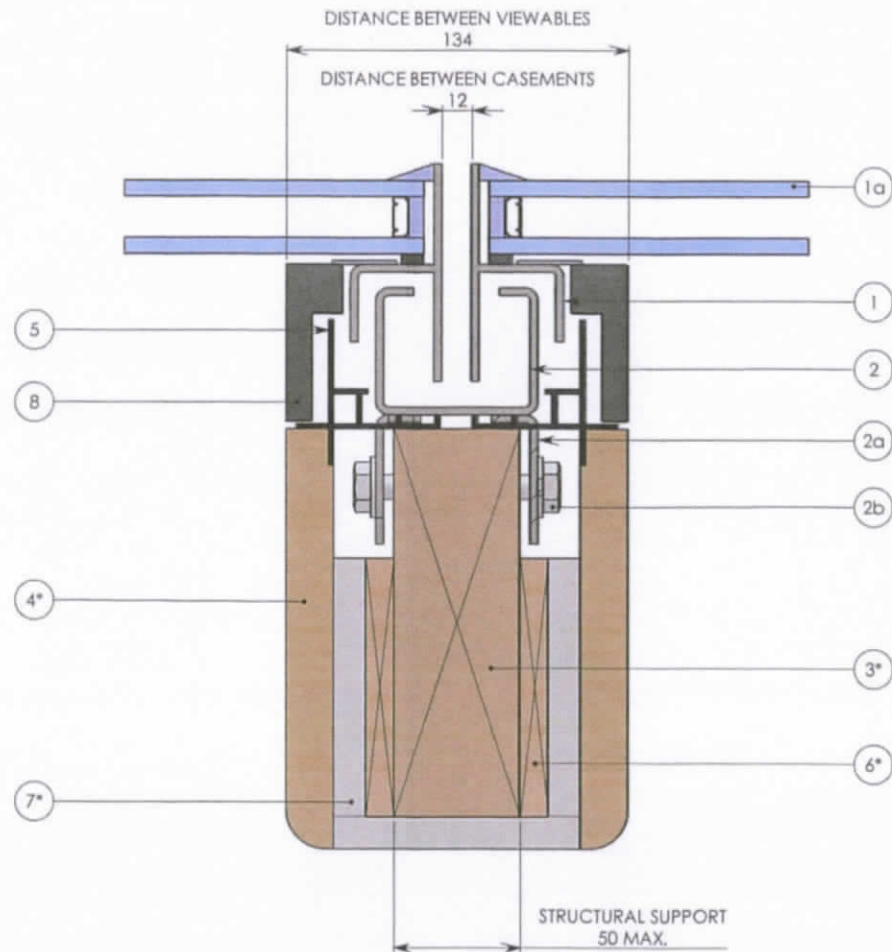


Key:

- 1. The Studio Designer Conservation Rooflight casement fitted with glazing unit (1a).
- 2. The Studio Designer Conservation Rooflight baseplate fixed to the structural support (3*) using supplied coach bolts and washers (2b) through fixing lugs (2a).
- 3*. Structural support member - maximum width 50mm.
- 4*. Timber reveal to align with rooflight linings (8) to provide a 'frameless' internal appearance.
- 5. Factory fitted rooflight Thermoliner.
- 6*. 9/12mm Ply packers fixed to structural support (3*).
- 7*. Plasterboard lining with plasterboard stop to protect corner. Fixed to plywood packers (6*) and fitted behind rooflight Thermoliner (5).
- 8. Valchromat linings provided with a pre-treated primer coating that can be left unfinished or finished on site.

*Indicates those components NOT supplied with the rooflight and are therefore supplied by the contractor/rooflight installer.

PLEASE NOTE: These sectional details are provided as an installation suggestion. Due to the differing nature of installations, we strongly advise you to consult your rooflight installer to verify fitness for purpose. This drawing does not constitute a structural proposal. Sufficiency of structural supports to be checked by rooflight purchasers structural consultant.



TITLE: The Studio Designer Conservation® Rooflight
 > A roof window range suitable for pitched roofs between 17.5° and 65°
 > Detail applicable ONLY to rooflight models with integral casement timber linings
U-Channel Installation Detail

DWG NO.: E2777_001ENQ_A SHEET NO.: 1 OF 1 REVISION:
 SCALE: 1:2 @ A3 DO NOT SCALE DATE: 04/07/2014
 This is a suggested installation detail which may not be exactly applicable to all situations and constructions. It is not a detailed or constructional proposal. Installers and designers are advised to check their own details for compliance with all currently applicable Local Authority by-laws, Acts of Parliament and British / ISO standards.

A
 DB: JE
 CB: KS

the Rooflight Company
The Professionals' Choice
 w: www.therooflightcompany.co.uk
 t: 01993 833 106
 e: info@therooflightcompany.co.uk

All information contained within this drawing is copyright © and design right of the Rooflight Company. The intellectual property rights of the products detailed within this drawing and embedded 3D models are owned by the Rooflight Company.