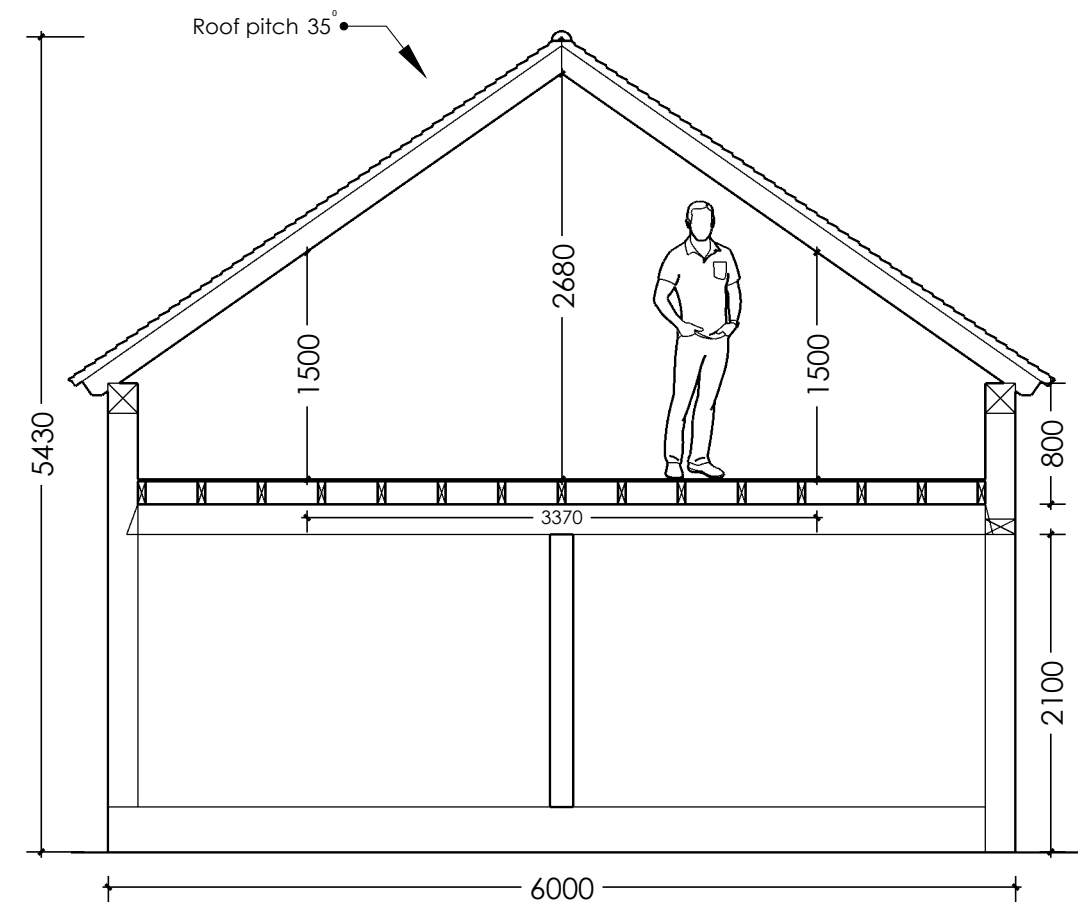
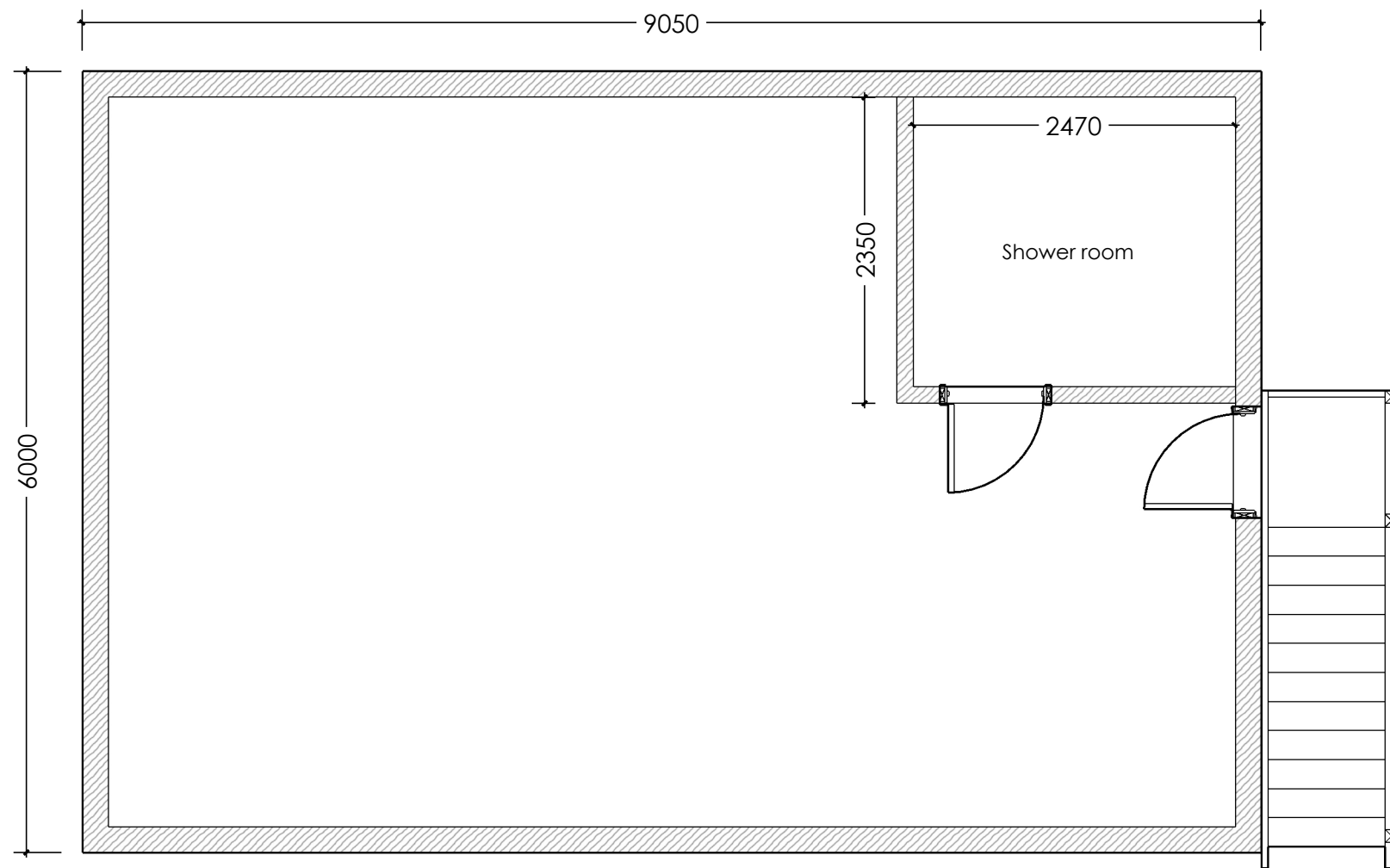


GF Plan

Please ensure concrete base for main frame is extended to allow for stairs foundation



Cross section at left elevation showing useable roof space



FF Plan

**Please note:**

Building sits on 300mm high & 215mm wide solid skin brick plinth (Top layer of bricks laid frog side down)

Front elevation posts/beams are 200 x 200mm

Rear elevation posts/beams are 200 x 200mm

Side/tie beam posts are 150 x 150mm

Rafters are 150 x 50mm

Studwork 100 x 50mm

Clearance under front garage bay rails 2.1m

35 degree gable ended roof with 800mm raised eaves

External stairs

Please see [www.swiftoak.com](http://www.swiftoak.com) for full terms, conditions & specifications relating to frame manufacture & associated ground works.

Do not scale from this drawing. These drawings are not for assembly or building control information. Dimensions are provided for planning & estimating purposes. Any discrepancies should be notified to **Swift Oak**.

**Swift Oak** is an oak frame manufacturing company; any drawings provided by us are for information only. We consent for you to use our drawings to seek planning consent, however they are not construction drawings. Information & dimensions for products not supplied by Swift Oak (such as windows) included in these drawings are shown for illustrative purposes only.



Scale Bar 1:50

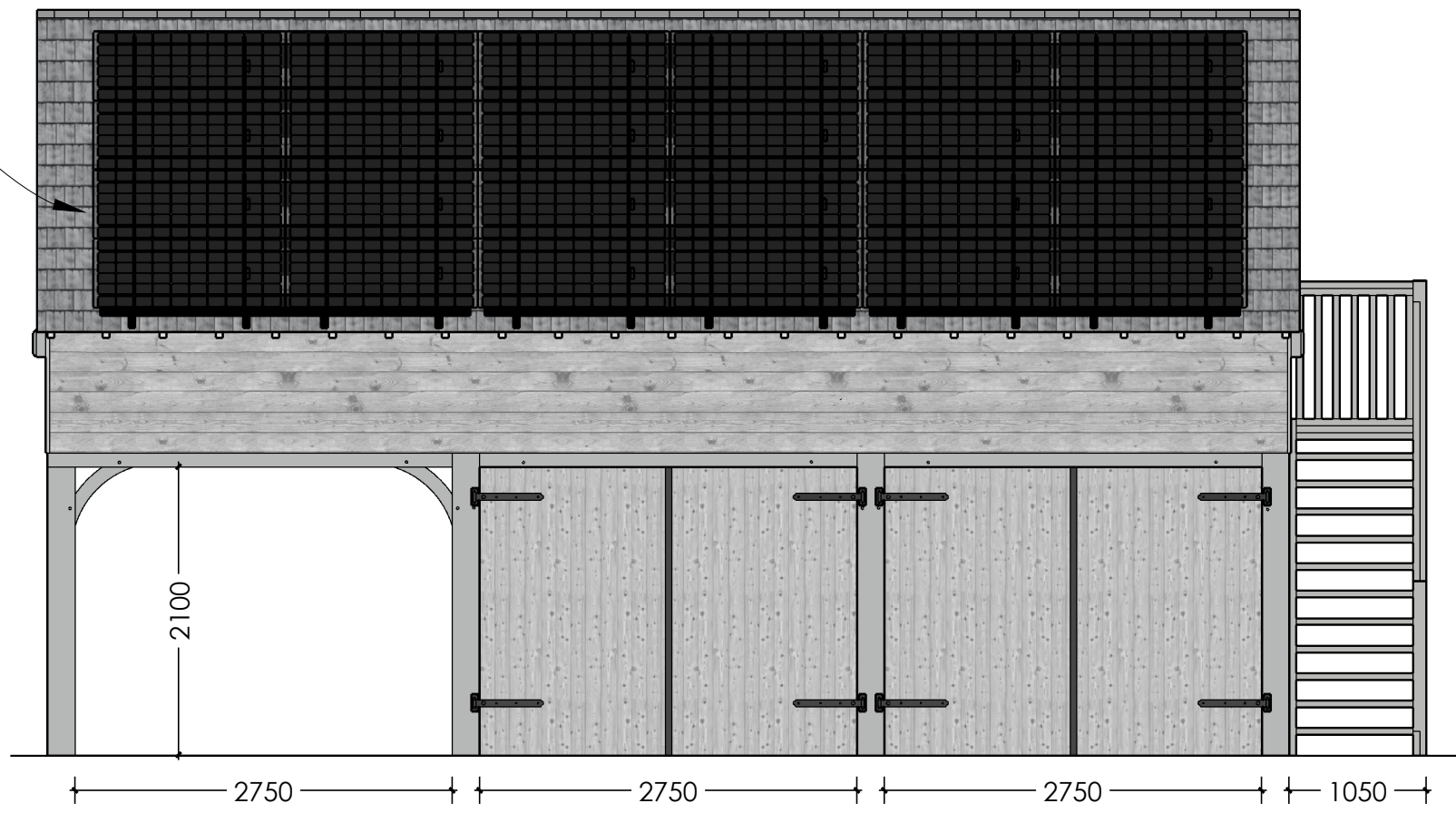
Rev No: Revision: Date:

**SWIFT OAK**  
- Oak Frame Specialists -

<b>LOCATION:</b>	<b>CLIENT:</b> K Saville	<b>REV:</b>	<b>SCALE:</b> 1:50 @ A2
<b>DRAWING TYPE:</b> Planning	<b>DRAWING No.:</b> KS/001	<b>DATE:</b> 05.05.23	
<b>DRAWING NAME:</b> Three Bay 9.05 x 6m Full Height Raised Eaves Frame; Plan, Spec & Cross section			



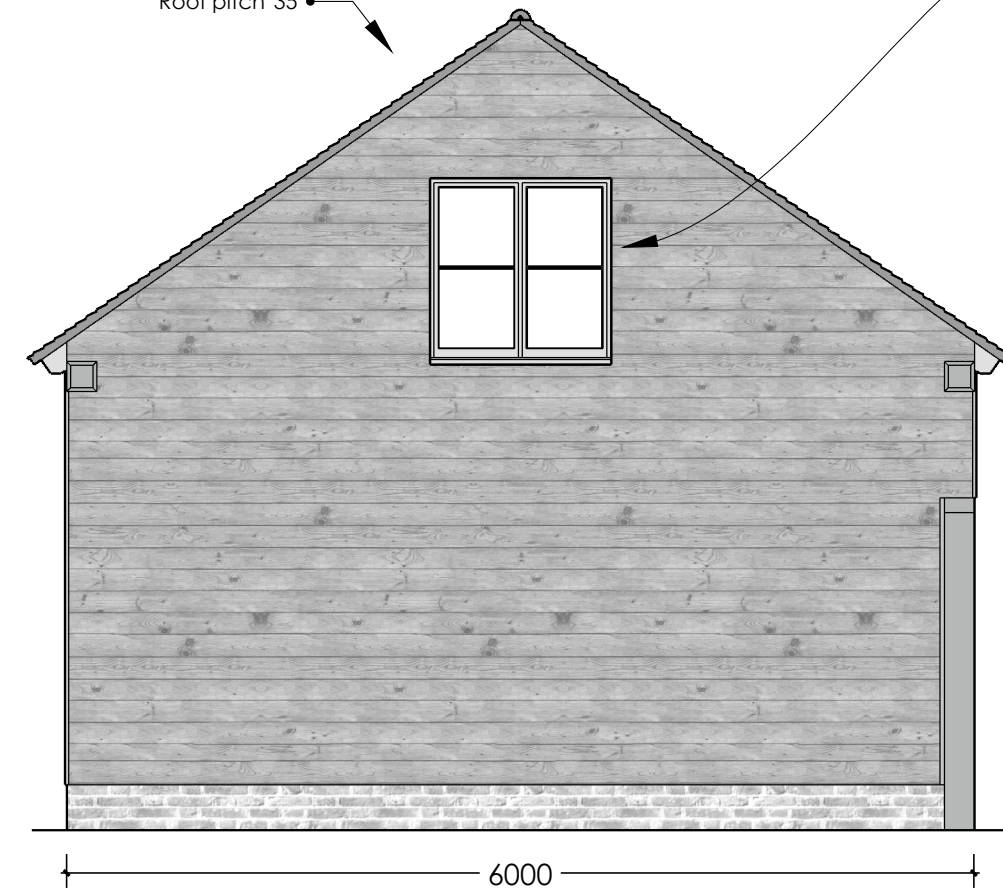
In-roof photovoltaic panels



South Elevation

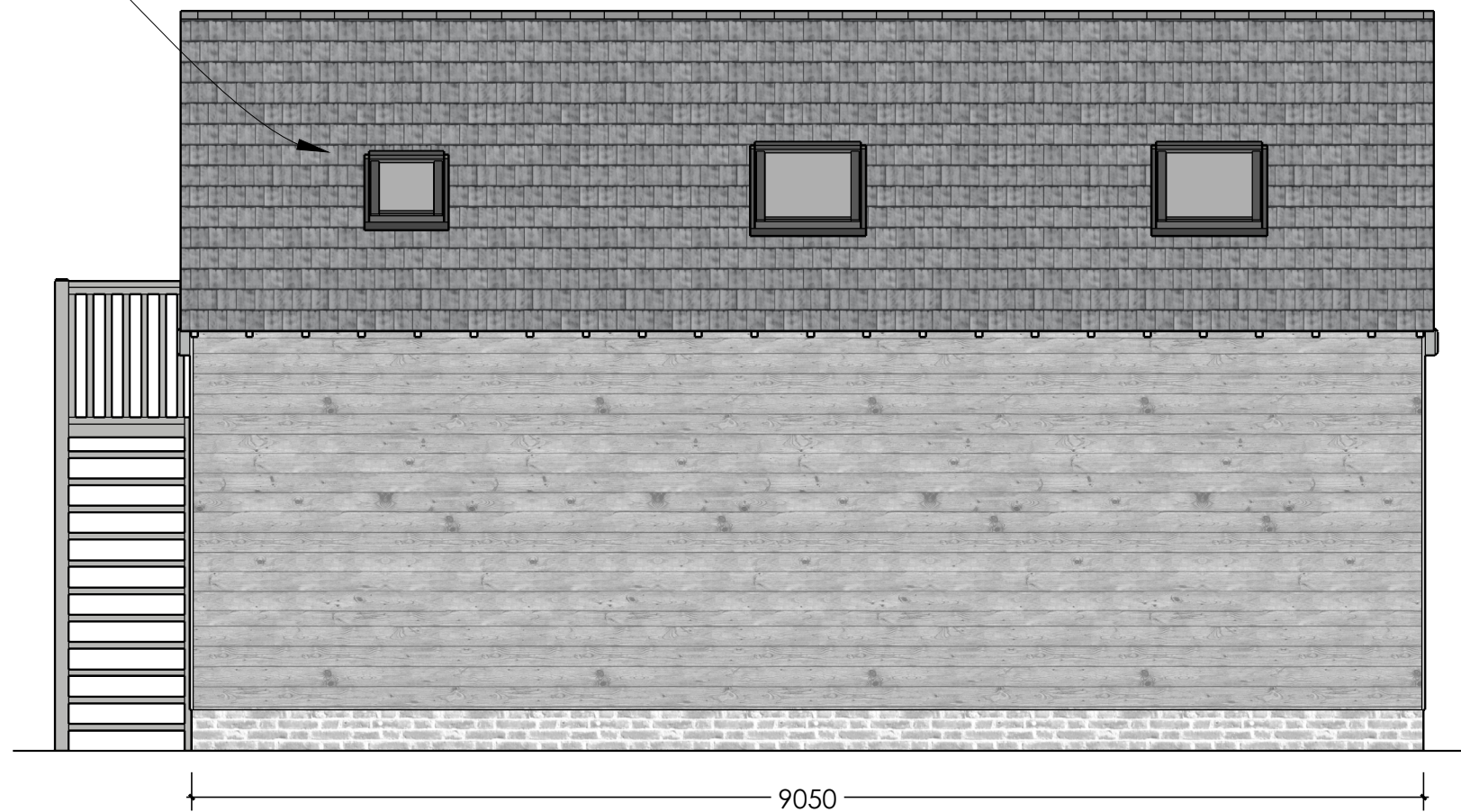
Roof pitch 35°

Proposed window is 1200 x 1200mm



West Elevation

Proposed velux sizes are 780 x 980mm (2 No.) & 550 x 700mm (1 No.)



North Elevation

Proposed window is 1800 x 1200mm

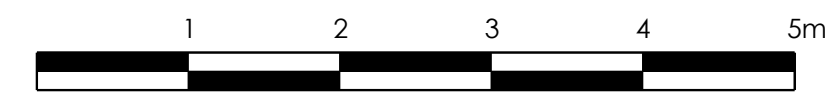


East Elevation

Rev No: Revision: Date:

**SWIFT OAK**  
- Oak Frame Specialists -

<b>LOCATION:</b>	<b>CLIENT:</b> K Saville	<b>REV:</b>	<b>SCALE:</b> 1:50 @ A2
<b>DRAWING No:</b> KS/002	<b>DATE:</b> 05.05.23		
<b>DRAWING TYPE:</b> Planning	<b>DRAWING NAME:</b> Three Bay 9.05 x 6m Full Height Raised Eaves Frame; Elevations		



Scale Bar 1:50