

The Nook, Albury

Reinstate door to its original location

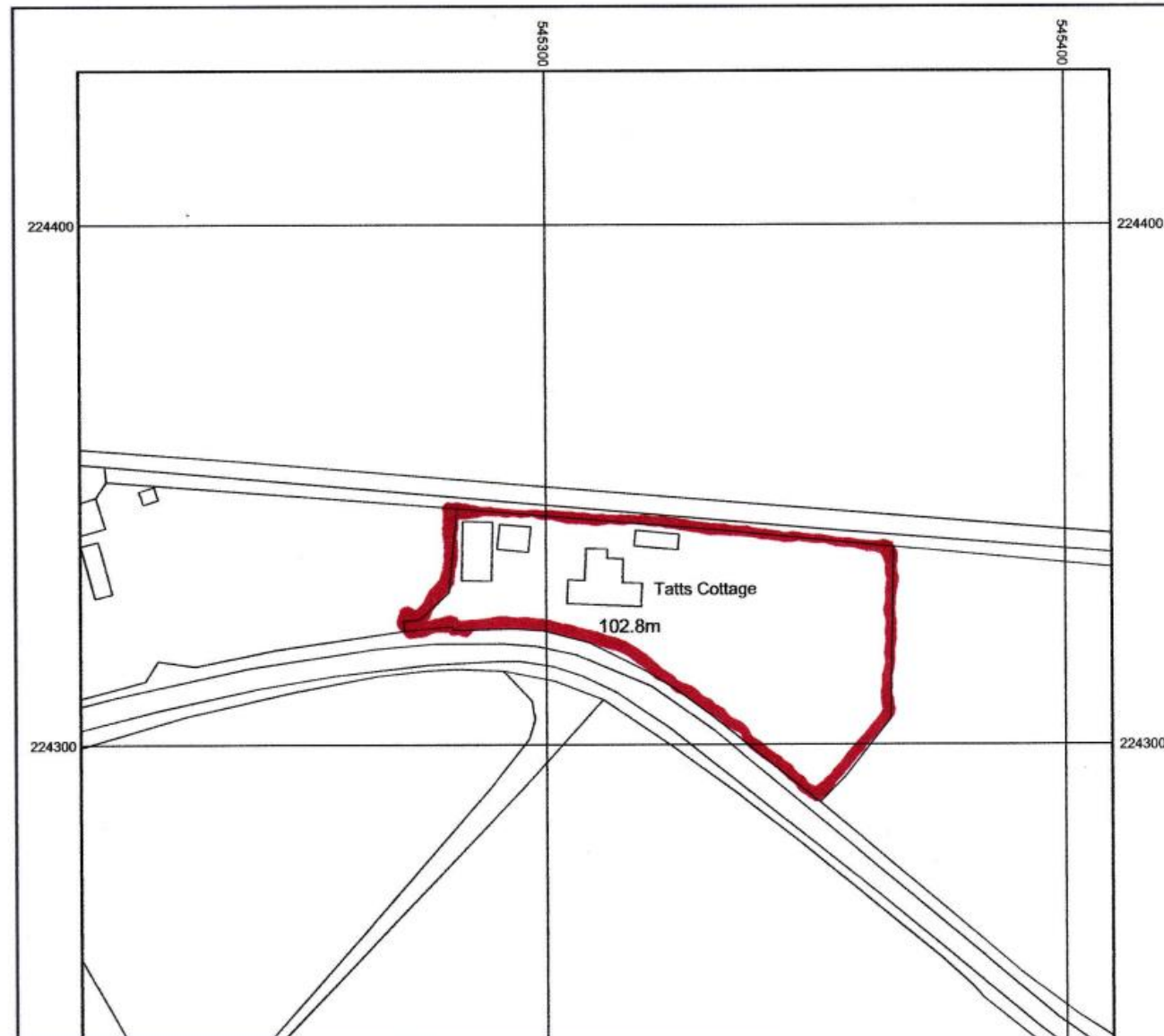
DESIGN & ACCESS STATEMENT

“ The Nook” Upwick Green Albury Herts CM11 2JX
GRADE 2 LISTED

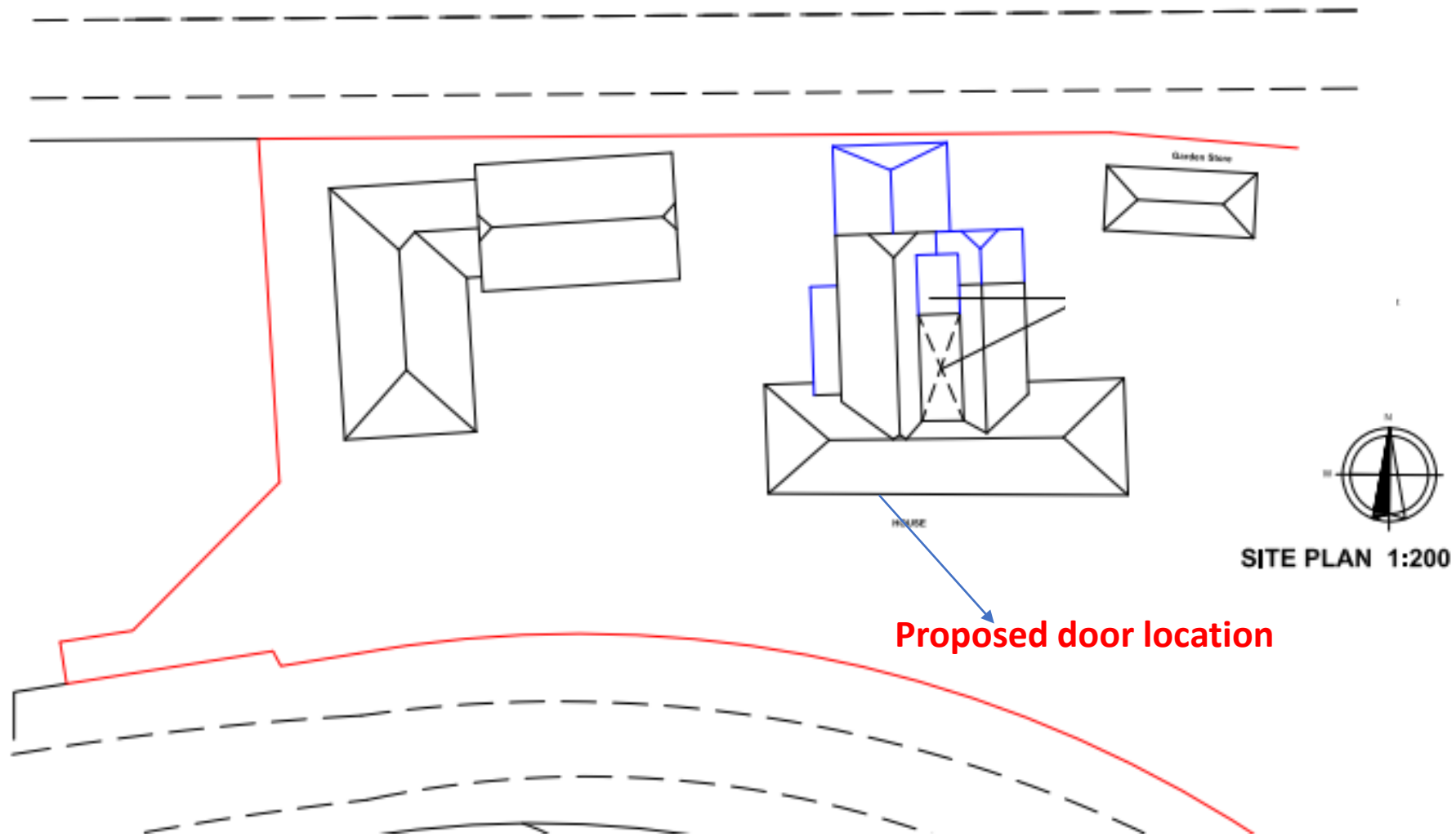
ACCESS

It is proposed to reinstate a door to the front of the Nook. An image from the Historic England Archive shows a door at the proposed location. It seems that one of the previous owners of the Nook replaced the door with a window.

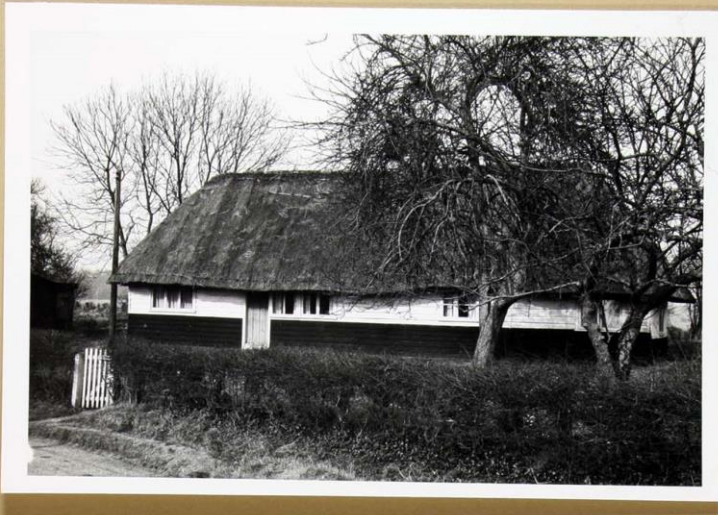
The door would allow direct access from the garden to the kitchen.



The Nook, SG11
Site Plan



Historic image of the Nook,
Showing a door on the
South side of the cottage.



ALBURY : HERTS. : UPWICK

2069/33

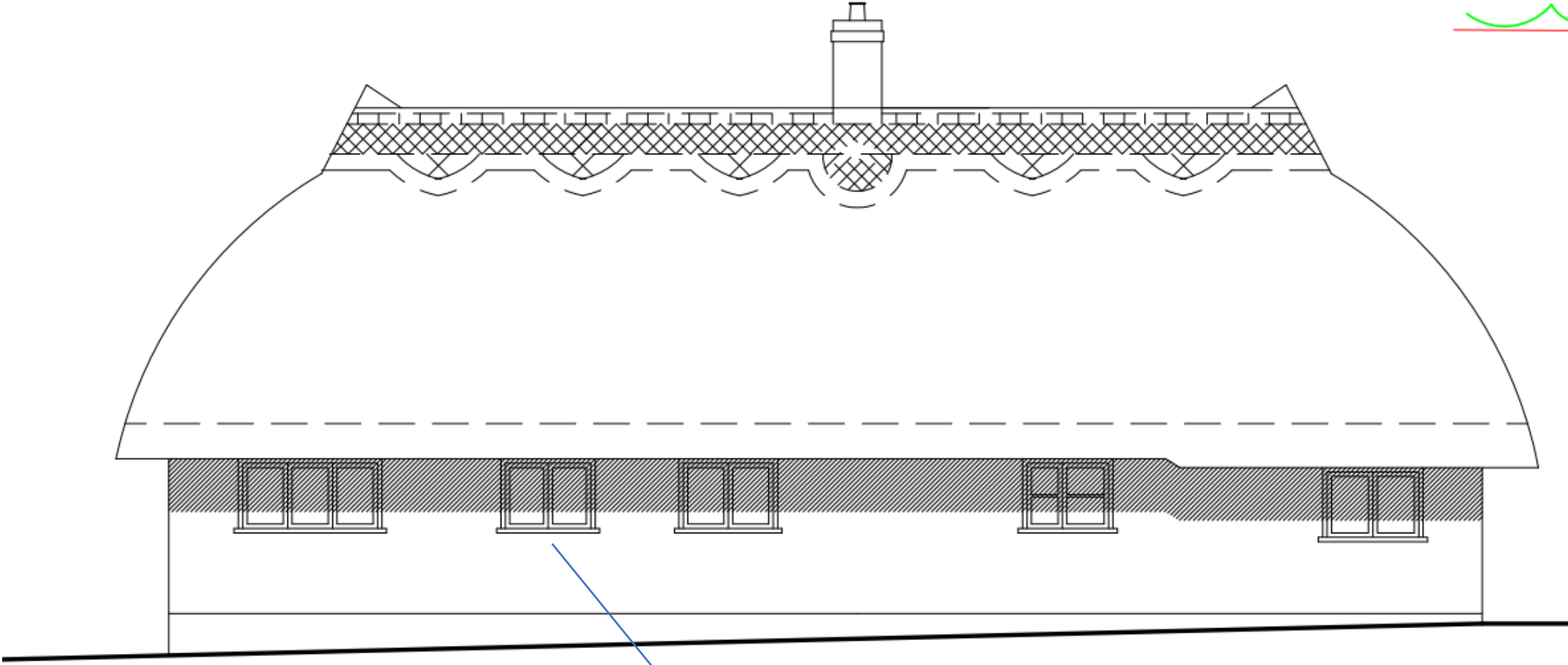
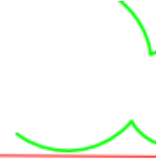


Current image of the Nook,
Showing a window where a door used to be.



Plan: Replace window with door

The Nook, SG11
Current window locations



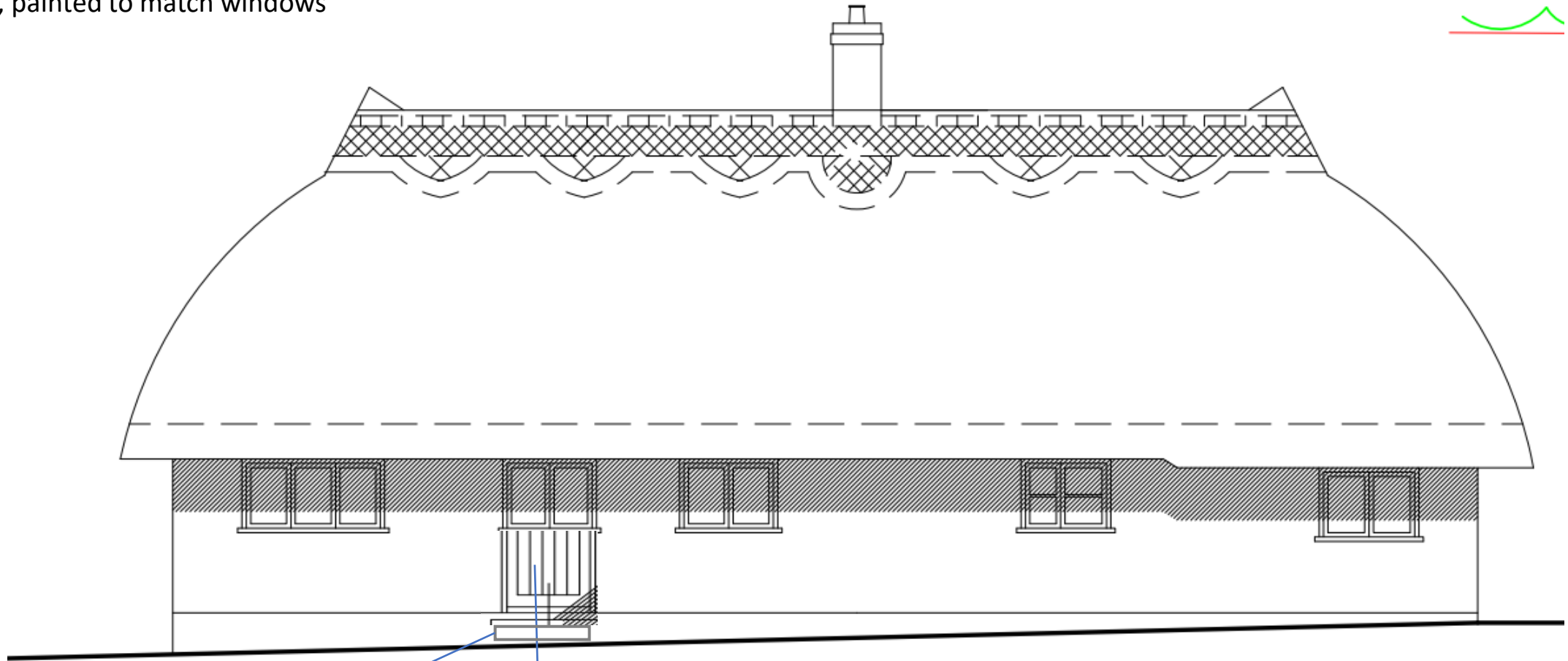
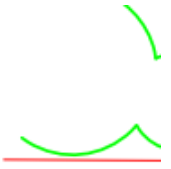
Current window size: W107cm, H80cm
Timber frame, painted

The Nook, SG11

Proposed Door – Option1

Half Glazed Cottage Door

Timber, painted to match windows



Two brick steps
To ground level

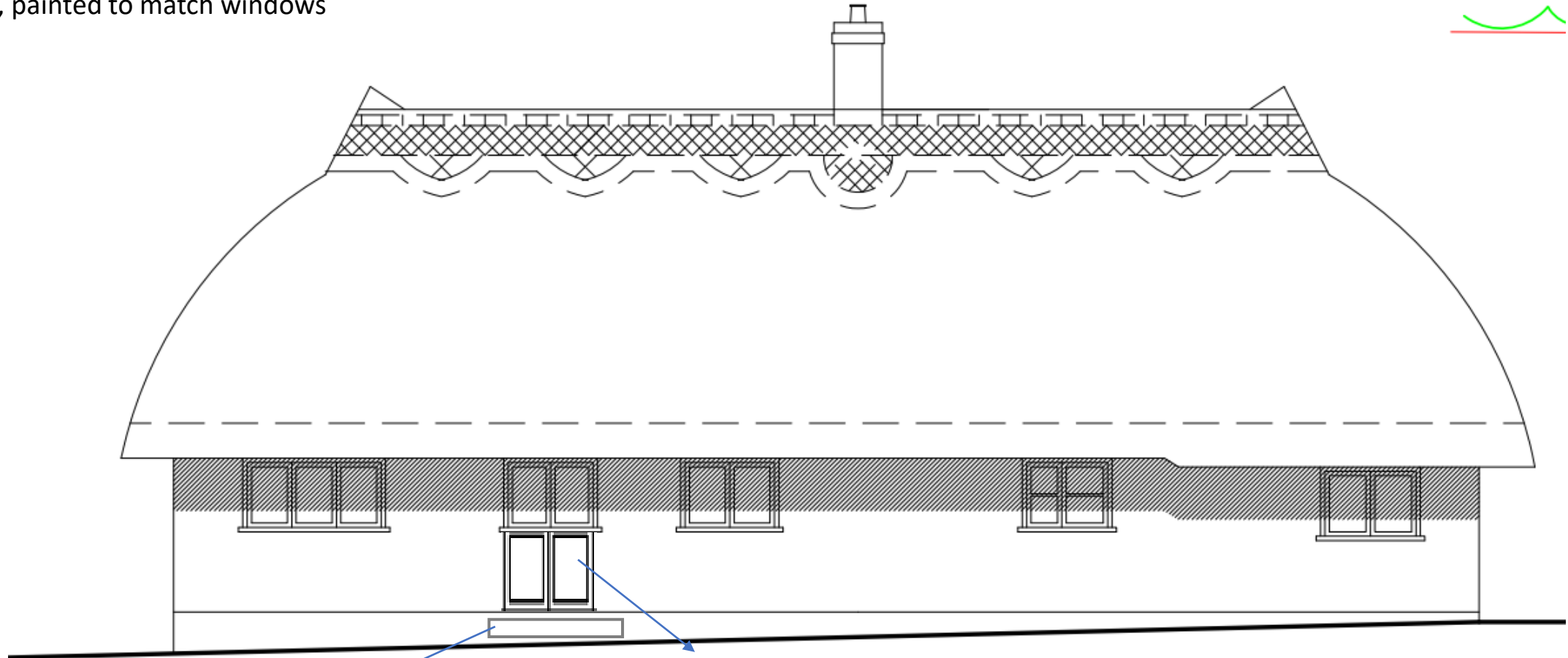
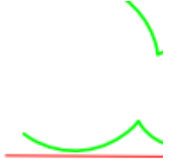
Half glazed cottage door
H 178cm (structural opening)
W 107cm

The Nook, SG11

Proposed Door - Option2

Narrow Glass French Doors

Timber, painted to match windows



Two brick steps
To ground level

Double French glass door, narrow
H 178cm (structural opening)
W 107cm