

G3*
Cherry, Wild (Gean)
C2

7
Sycamore
B1,2

6
Sycamore
B1,2

12*
Cypress, Lawson variety
C2

5
Cypress, Lawson variety
C2

4
Willow, Sallow
C2

8
Cherry, Flowering
U

9
Ash, Common
C2

10
Ash, Common
C2

1
Cherry, Wild (Gean)
C2

2*
Fig
C2

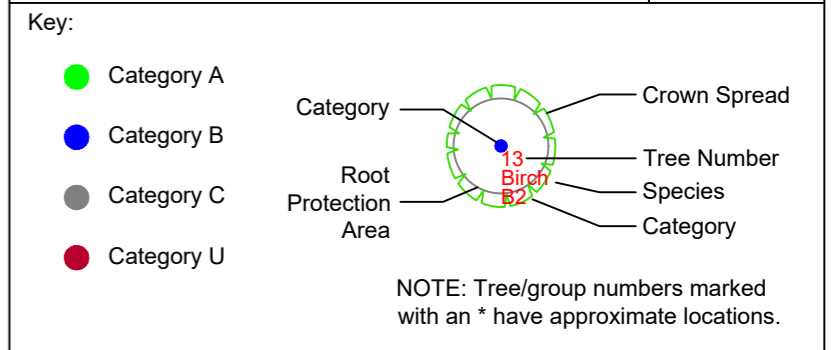
11
Oak, English
B1,2

GROUND FLOOR

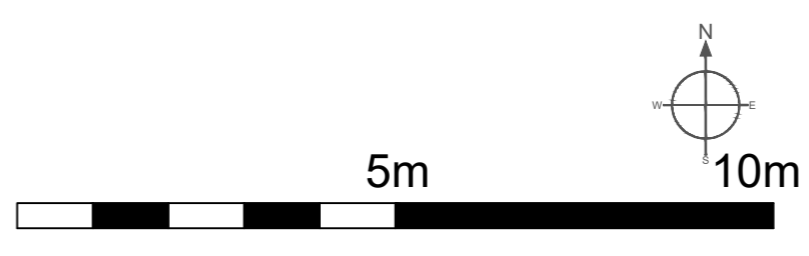
Arbortrack Systems Ltd
The Granary Studio, Crewe Lane, Kenilworth, CV8 2LA
07986 122074 / james@arbortrackservices.com

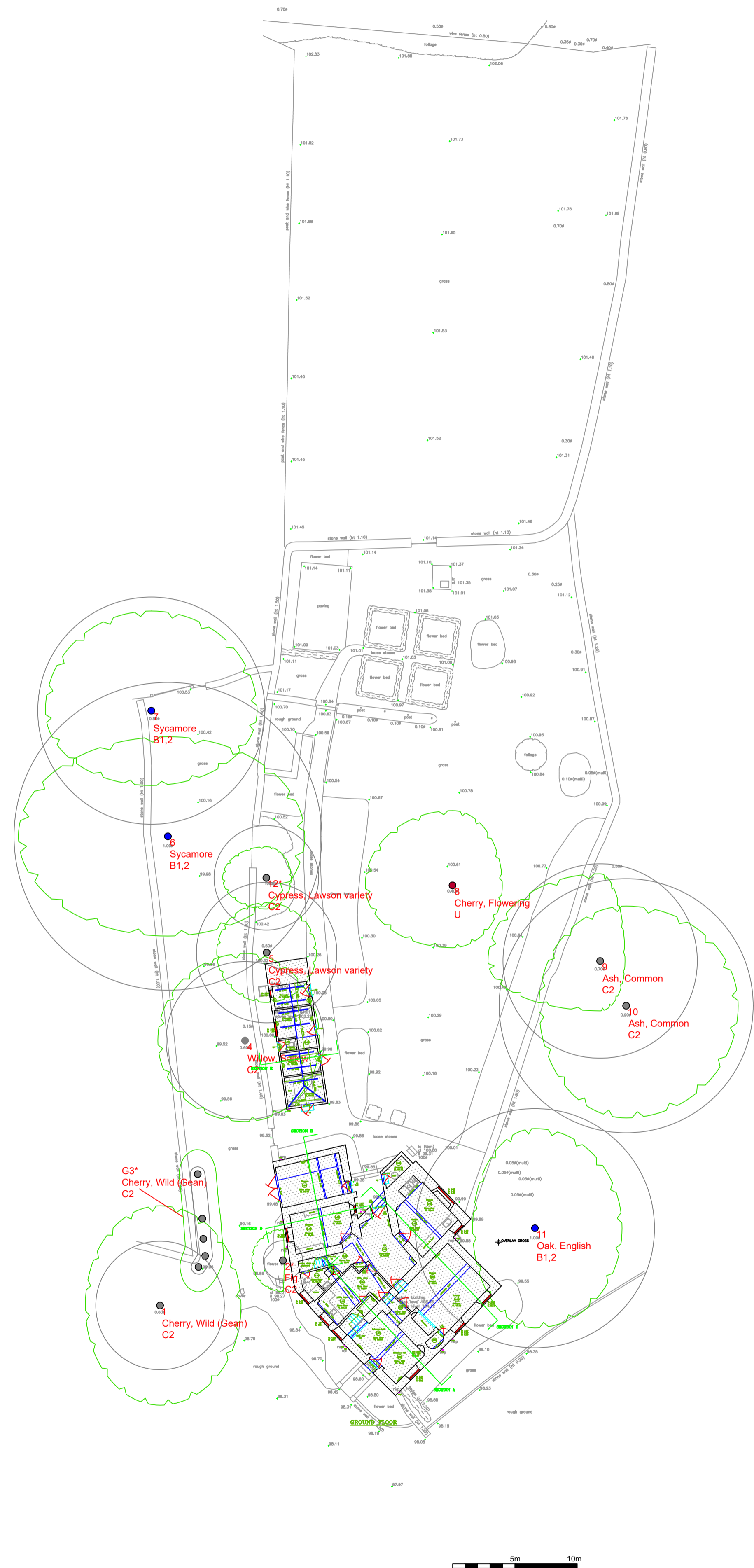
Site: The Bell House
Drawing Title: Arboricultural Impact Assessment
Appendix: A

1:100@A1
July 2022



Do not scale from this drawing. Please check all dimensions on site and notify us of any discrepancies.
This drawing was produced in colour. Do not rely on monochrome copies or those reduced in size.
This drawing is copyright [Arbortrack Systems Ltd] and may not be used or changed without the written consent of Arbortrack Systems Ltd.





Arbortrack Systems Ltd
 The Granary Studio, Crewe Lane, Kenilworth, CV8 2LA
 07986 122074 / james@arbortrackservices.com

Site: The Bell House

Drawing Title: Arbicultural Impact Assessment	1:250@A1
Appendix: A	July 2022

Key:

● Category A		— Crown Spread
● Category B		— Tree Number
● Category C		— Species
● Category U		— Category

NOTE: Tree/group numbers marked with an * have approximate locations.

Do not scale from this drawing. Please check all dimensions on site and notify us of any discrepancies.
 This drawing was produced in colour. Do not rely on monochrome copies or those reduced in size.
 This drawing is copyright [Arbortrack Systems Ltd] and may not be used or changed without the written consent of Arbortrack Systems Ltd.