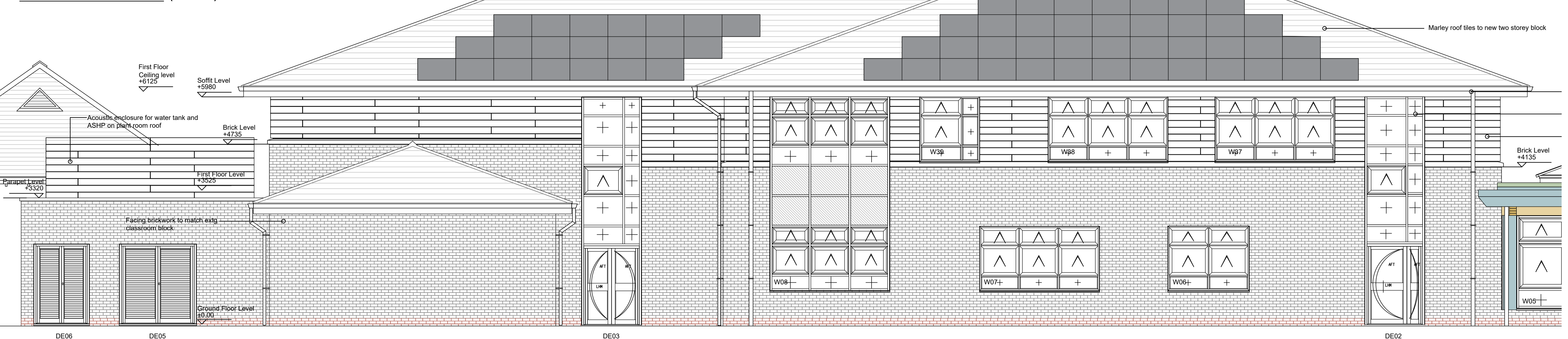


All dimensions must be checked on site and not scaled from this drawing

RESIDUAL DESIGN RISKS- CDM REGS ARE IDENTIFIED WITH THIS SYMBOL SEE DESIGN RISK SHEET OR LAYOUT

REVISION NOTES

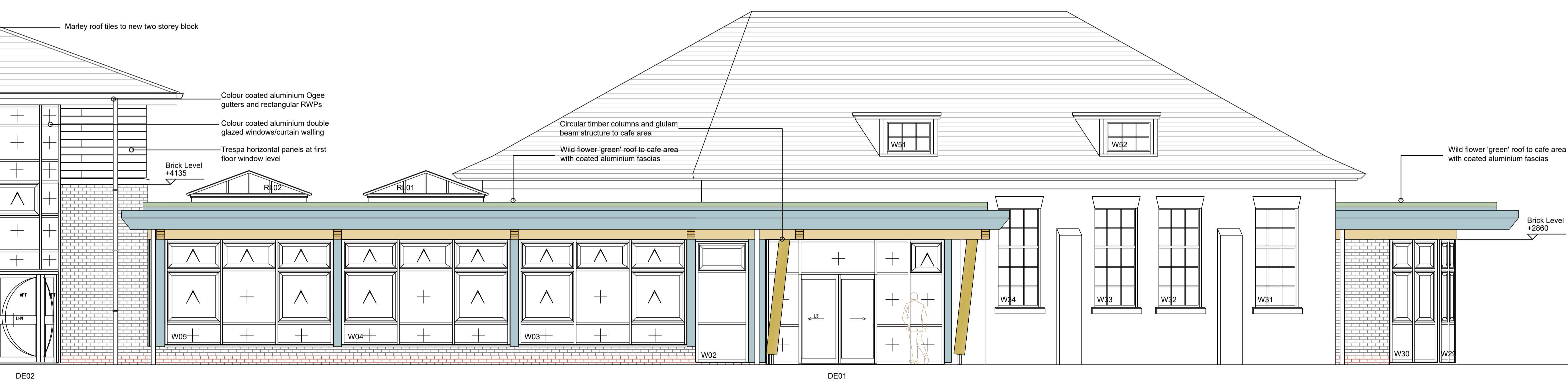
NORTH ELEVATION (PART)



NEW PLANT ROOM

NEW TWO STOREY BLOCK

NORTH ELEVATION (PART)

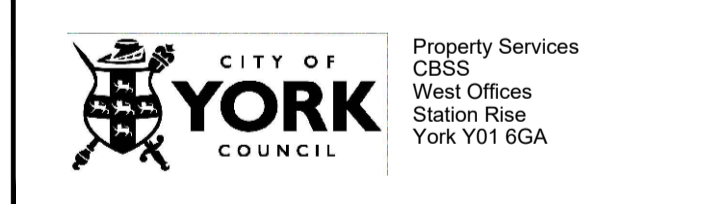


NEW CAFE AND MAIN ENTRANCE

EXISTING HALL RETAINED

EXTENSION

Rev	Date	Revision	By



Contact:
Tel No:
FAX No:
Email:

Job Title
CLIFTON EXPLORE LIBRARY LEARNING CENTRE

PROPOSED GA ELEVATIONS
SHEET 1
NORTH ELEVATION

Drawn: AT
Checked:
Authorised:
Date: AUG 2022
Scale: A1
1:100

Issue Status:
CONSTRUCTION

Drawing Number: 200043.C111
Revision:

MATERIALS :

Existing Building :
Existing Brickwork - Red Multi Colour
New Fascias & Soffits - Colour coated aluminium
Replacement Windows to Hall - Timber Vertical Sliding Sash to N & S Elevations High level
Doors - Colour coated aluminium framed
New Rainwater Goods - Colour coated aluminium
Ogee gutters and rectangular RWPs
Roof - Rosemary Tile

Proposed Single Storey Extension :
External Walls - 65mm Ibstock Ivanhoe Red Multi with red engineering brick beneath DPC.
Flat Roof - Bituminous System & Wildflower 'green roof' system
Timber & Glulam Structure
Windows & Doors - Colour coated aluminium framed
Soffit & Fascia's - Colour coated aluminium panel system
Rainwater Goods - Colour coated aluminium
Lantern Roof lights - Colour coated aluminium framed

Proposed Two Storey New Build :
External Walls - 65mm Ibstock Ivanhoe Red Multi with red engineering brick beneath DPC.
Trespa cladding panels on framing system at high level
Cast Stone Cill Detail at 1st floor window level
Pitched Roof - Marley roof tiles with integral PV Solar tiles (South Elevation Only)
Windows & Doors - Colour coated aluminium framed
Soffit & Fascia's - Colour coated aluminium panel system
Rainwater Goods - Colour coated aluminium