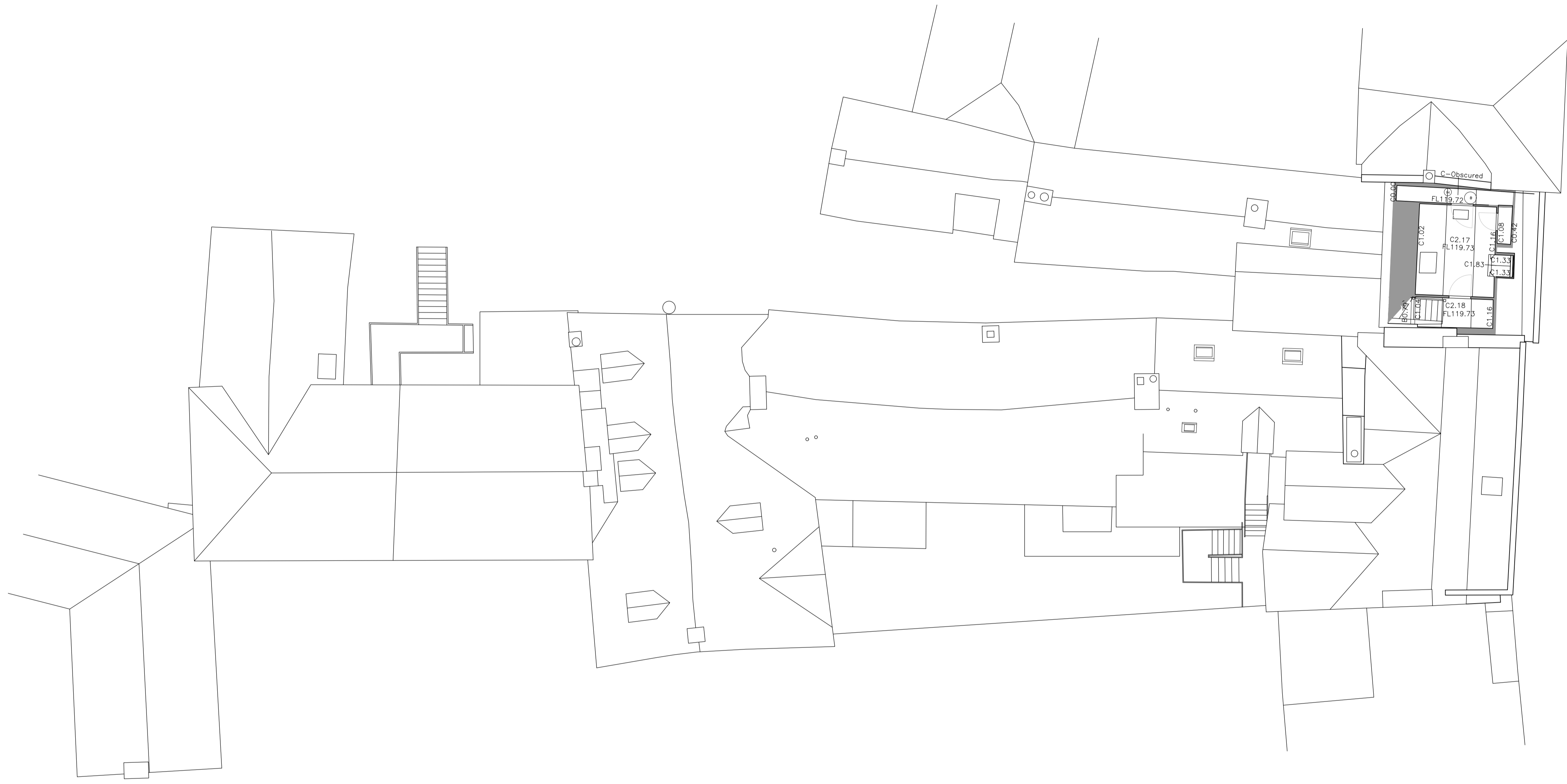
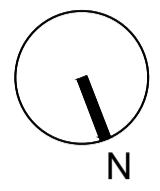


Notes

Do not scale from this drawing.

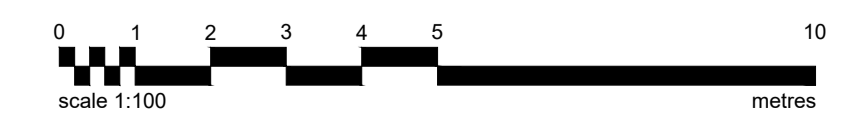
All dimensions are to be checked prior to construction and any discrepancies are to be identified to the Architect.

Copyright reserved.



KEY

INTERNAL FEATURES	
B	BEAM HEIGHT
C	CEILING HEIGHT
D	DOOR HEIGHT
DS	DOOR SILL HEIGHT
DH	DOOR HEAD HEIGHT
FC	FALSE CEILING
FL	FLOOR LEVEL
H	HEAD HEIGHT
S	SILL HEIGHT
SP	SPRING HEIGHT
⊙	LIGHT SWITCH
⊠	ELECTRICAL SOCKET
⊡	TV SOCKET
(IH)	IMMERSION HEATER
▭	RADIATOR
↙ C	SLOPING CEILING (ARROW POINTS UP)
↙ B	SLOPING BEAM (ARROW POINTS UP)
↙ DS	DOOR SILL HEIGHT (ARROW POINTS UP)
↙ DH	DOOR HEAD HEIGHT (ARROW POINTS UP)
↙ FL	SLOPING FLOOR (ARROW POINTS UP)
↙ UP	STEP UP (ARROW POINTS UP)
⊙	TELEPHONE SOCKET
⊙	FIRE ALARM
⊙	LIGHT
⊠	BOILER
↙	RAFTER



P01 xx/03/21 Planning KB

Revisions

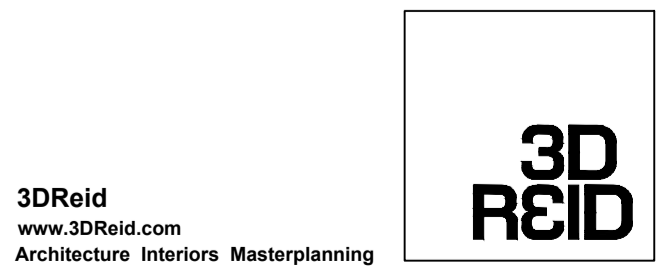
Status
Planning

Client
Paton Developments

Project
**The Bull at Burford
High Street, Burford,
Oxfordshire, OX18 4RG**

Title
**Existing
Third Floor Plan**

Scale	Size	Date	Drawn	Checked
1:100	A1	24/11/20	AG	DP



Drawing No. 200189-3DR-04-DR-D20-11014 Rev. P01