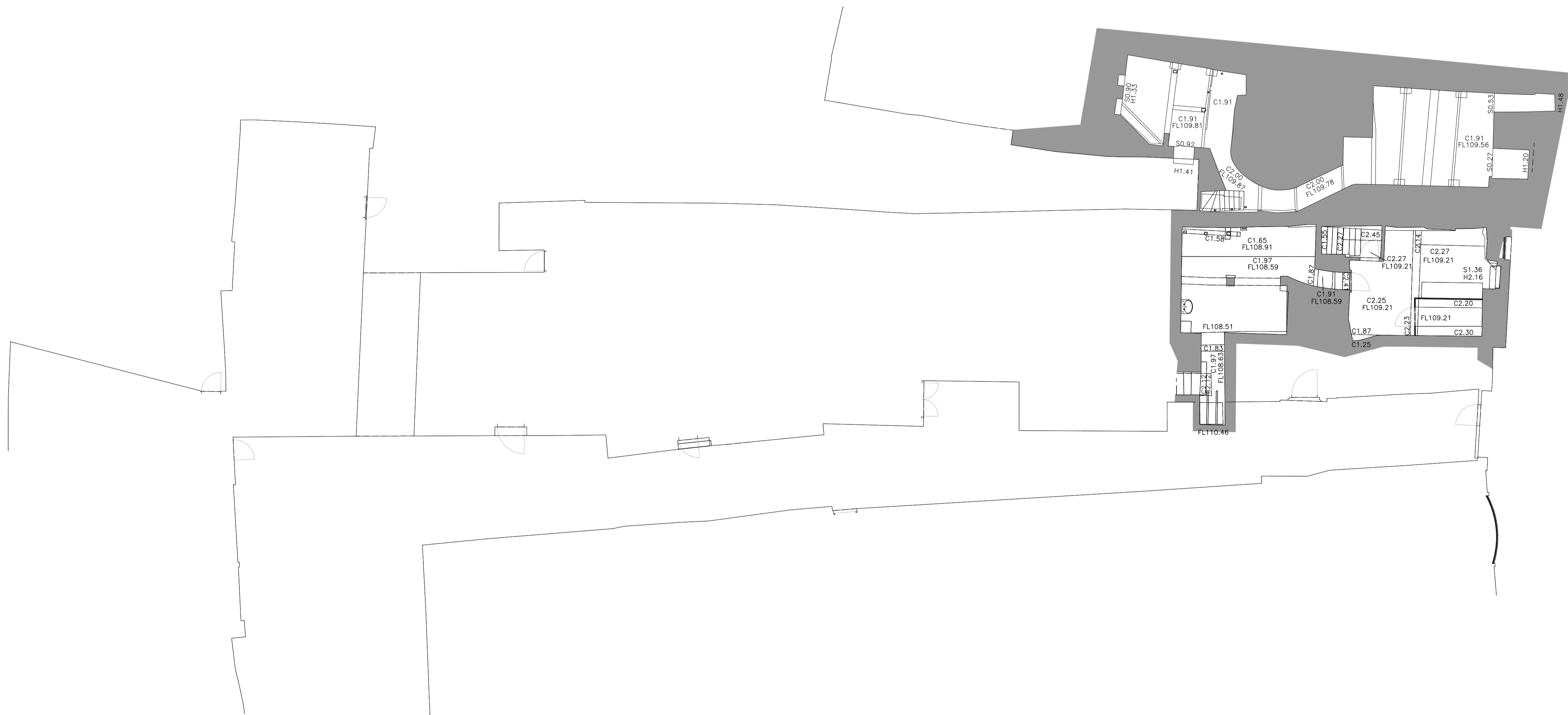
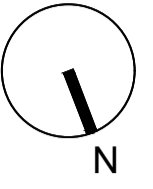


Notes

Do not scale from this drawing.
 All dimensions are to be checked prior to construction and any discrepancies are to be identified to the Architect.
 Copyright reserved.



KEY

INTERNAL FEATURES	← C SLOPING CEILING (ARROW POINTS UP)
B BEAM HEIGHT	← B SLOPING BEAM (ARROW POINTS UP)
C CEILING HEIGHT	← FL SLOPING FLOOR (ARROW POINTS UP)
D DOOR HEIGHT	← UP STEP UP (ARROW POINTS UP)
DS DOOR SILL HEIGHT	● TELEPHONE SOCKET
DH DOOR HEAD HEIGHT	● FIRE ALARM
FC FALSE CEILING	● LIGHT
FL FLOOR LEVEL (ARROW POINTS UP)	⊠ BOILER
H HEAD HEIGHT	← RAFTER
S SILL HEIGHT	
SP SPRING HEIGHT	
● LIGHT SWITCH	
⊠ ELECTRICAL SOCKET	
⊠ TV SOCKET	
⊠ IMMERSION HEATER	
⊠ RADIATOR	

P01 xx/03/21 Planning KB
 Revisions

Status
Planning

Client
Paton Developments

Project
**The Bull at Burford
 High Street, Burford,
 Oxfordshire, OX18 4RG**

Title
**Existing
 Basement Floor Plan**

Scale	Size	Date	Drawn	Checked
1:100	A1	24/11/20	AG	DP

3DReid
 www.3DReid.com
 Architecture Interiors Masterplanning

Drawing No. 200189-3DR-00-DR-D20-11010
 Rev. P01

