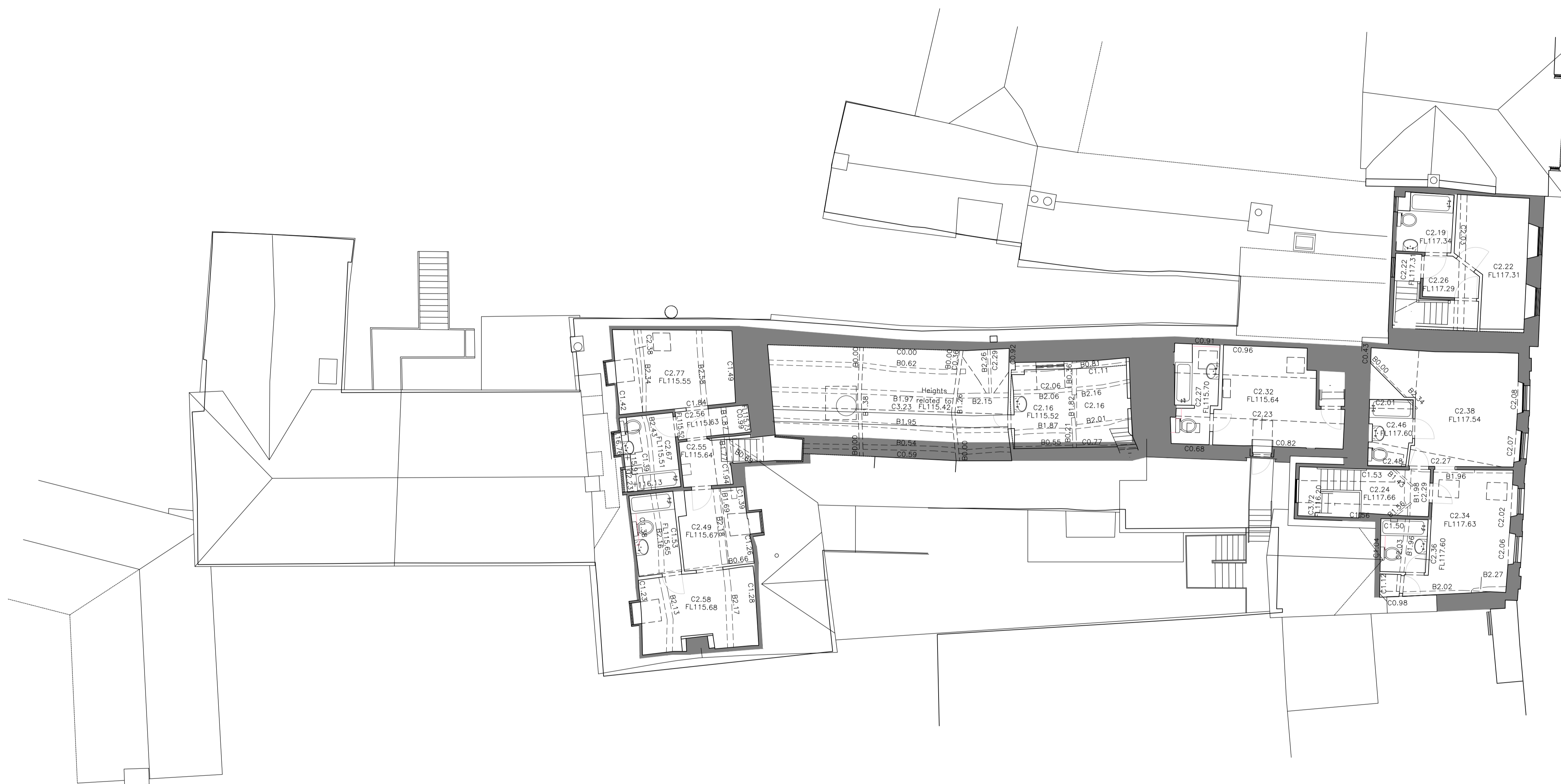


Notes

Do not scale from this drawing.

All dimensions are to be checked prior to construction and any discrepancies are to be identified to the Architect.

Copyright reserved.



KEY

- INTERNAL FEATURES
- S BEAM HEIGHT
- C CEILING HEIGHT
- D DOOR HEIGHT
- DS DOOR SILL HEIGHT
- DH DOOR HEAD HEIGHT
- FC FALSE CEILING
- FL FLOOR LEVEL
- H HEAD HEIGHT
- S SILL HEIGHT
- SP SPRING HEIGHT
- LS LIGHT SWITCH
- ES ELECTRICAL SOCKET
- TS TV SOCKET
- IH IMMERSION HEATER
- RADIATOR
- UP STEP UP (ARROW POINTS UP)
- C SLOPING CEILING (ARROW POINTS UP)
- B SLOPING BEAM (ARROW POINTS UP)
- FL SLOPING FLOOR (ARROW POINTS UP)
- UP STEP UP (ARROW POINTS UP)
- TELEPHONE SOCKET
- FIRE ALARM
- LIGHT
- BOILER
- RAFTER

P01 xx/03/21 Planning KB

Revisions

Status

Planning

Client

Paton Developments

Project

The Bull at Burford  
105 High Street, Burford,  
Oxfordshire, OX18 4RG

Title

Existing  
Second Floor Plan

Scale	Size	Date	Drawn	Checked
1:100	A1	24/11/20	AG	DP

3DReid  
www.3DReid.com  
Architecture Interiors Masterplanning



Drawing No. Rev.

200189-3DR-03-D20-11013 P01

