

Notes

Do not scale from this drawing.

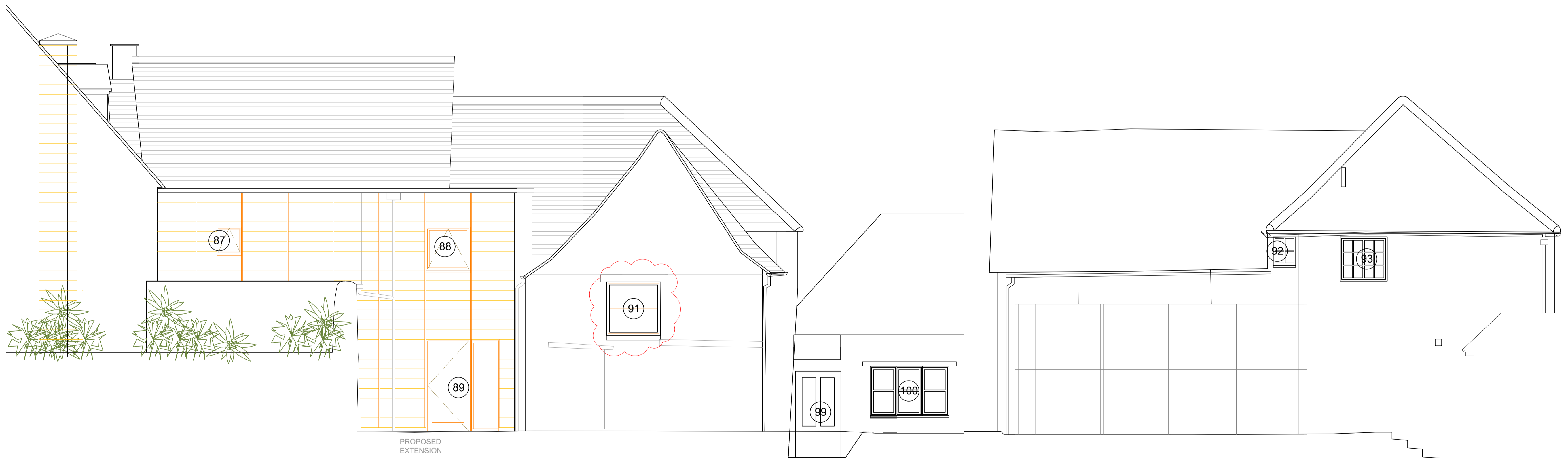
All dimensions are to be checked prior to construction and any discrepancies are to be identified to the Architect.

Copyright reserved.

Window and External door Schedule

- External Door 78
Restaurant - G.07 - new critical style glazed door
- Window 79
Bedroom - 1.13 - existing sash and case to be retained
- Window 80
Bathroom - 1.12 - existing sash and case to be retained
- Window 81
Bar Shop - G.06 - new 1hr fire rated window
- Window 82
Bedroom - 1.11 - existing sash and case window to be retained
- Window 83
Roof void - metal mullion window to be retained single casement
- Window 84
Lounge - 1.10 - small high level window
- Roof Window 85
Bathroom - 2.05 - existing roof window to be retained
- Roof Window 86
Bedroom - 2.06 - existing roof window to be retained
- Window 87
Main Incoming/Plant room - 1.34 - new timber double glazed window
- Window 88
Stair 3 - new timber double glazed window to the half landing
- External Door and Screen 89
Stair 3 - timber glazed door and screen at ground floor.
- Window 91
Bedroom - G.34 - new timber window high level
- Window 92
Bathroom - 1.23 -
- Window 93
Bathroom - 1.23 -
- External Door 99
Lobby - G.20 - timber external door to be retained
- Window 100
DDA Bedroom - G.29 - timber double glazed window to be retained.
- External doors 101
Stair 2 - G.09 - new timber exit doors.
- Window 102
Staff Changing area - existing sash and case window to be retained
- Window 103
Bedroom - 2.12 - existing window to be retained
- Window 104
Stair 7 - new roof window AOV to escape stair
- Window 105
Bedroom - 1.16 - existing sash and case window to be retained

NOTE:
PDL to provide a condition survey of all windows
Historic windows to be retained where possible
refer to Heritage report.
If new windows are required to be manufactured
then site sizes must be taken prior to manufacture



- B window 91 high level window 12/05/23 AG
- A window 84 changed non FR rated 15/06/22 AG

Revisions

Status

CONSTRUCTION

Client
Paton Developments

Project
**The Bull at Burford
High Street, Burford,
Oxfordshire, OX18 4RG**

Title
**Proposed
Window Schedule sheet 3 of 3**

Scale	Size	Date	Drawn	Checked
1:100	A1	22/03/22	AG	DP

3DReid
www.3DReid.com
Architecture Interiors Masterplanning



Drawing No. 200189-3DR-ZZ-DR-31-31004 Rev. B

