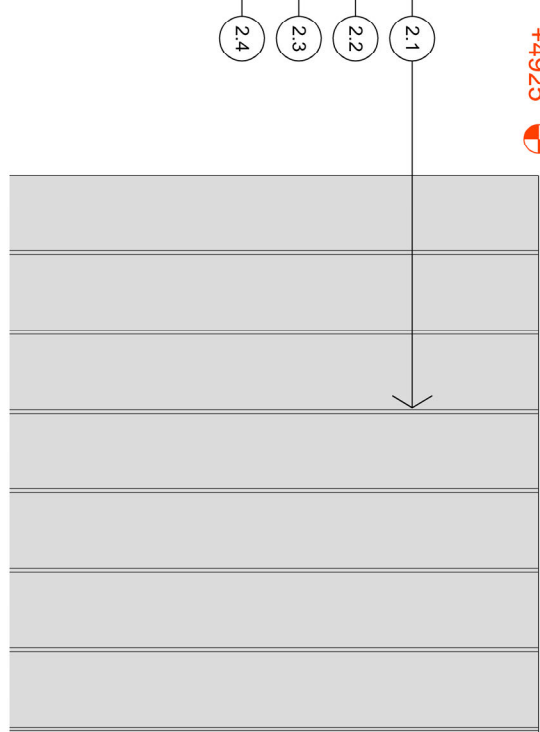
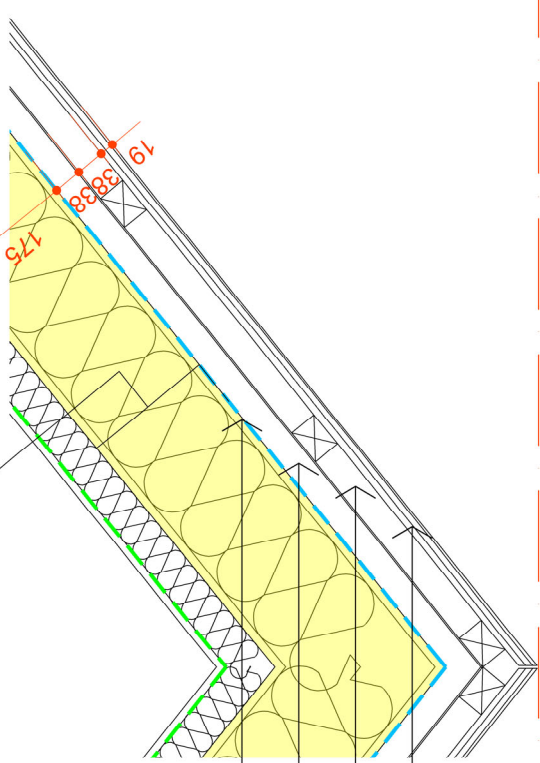
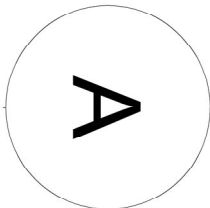
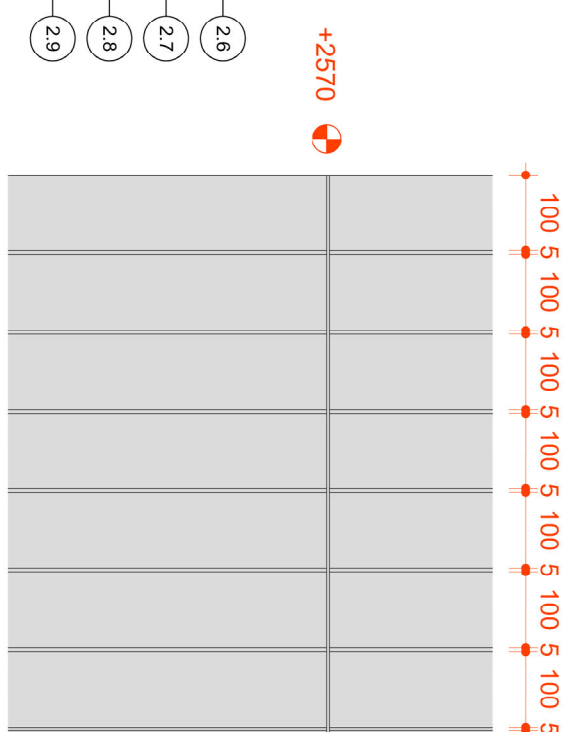
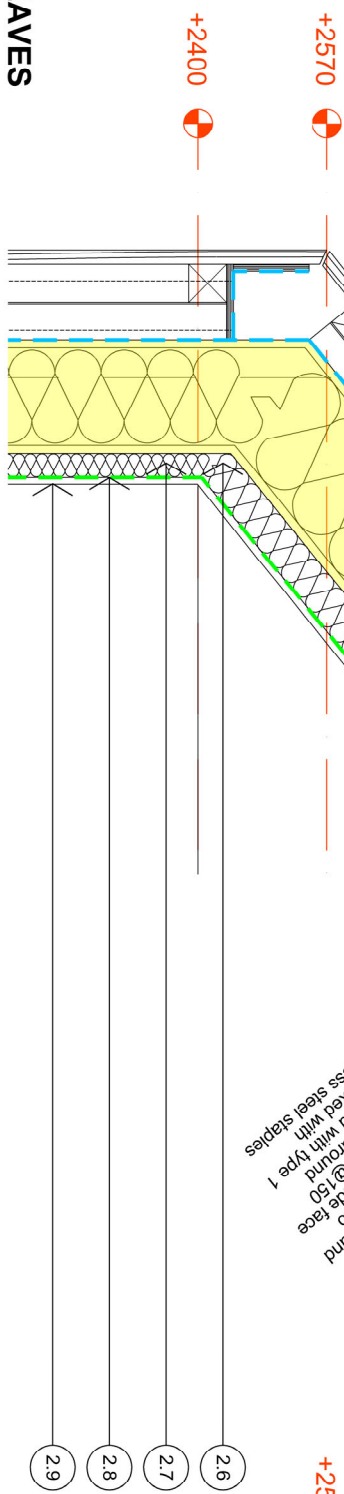


+4925



- For setting out of concrete upstand and foundations refer to latest revision of structural engineers drawings:
Details of timber panel construction/connections/sizes to be confirmed and detailed by SIPs supplier
- DRAWING KEY**
- 2. EXTERNAL WALL
 - 2.1 Vertical timber weatherboarding, 19mm tongue and groove western red cedar
 - 2.2 38x38mm battens @400 centres
 - 2.3 39mm top hat sections @ 400 centres
 - 2.4 Roofing Membrane / Fibre glass waterproof layer lapped into plywood framed gutter
 - 2.5 175 mm external SIP roof and wall panel. Insulation pre-fitted to 9mm OSB 3 sheeting to outside face fixed to intermediate studs @150 centres and 150 centres around perimeter. Panel pre-fitted with type 1 breather membrane fixed with 8-10mm long stainless steel staples
 - 2.6 50x50mm or 32x50mm battens @ 400 centres screw fixed to inside face of SIPs panel. Battens screwed to concrete upstand at low level
 - 2.7 50mm British Gypsum Isowool APR 1200 in cavity formed by 50x50mm battens
 - 2.8 Tyvek VCL SD2
 - 2.9 2 x 12.5mm Gyproc wallboard tapered edges for jointing.
- NOTE** All timber battens/ply painted with an epoxy DPM

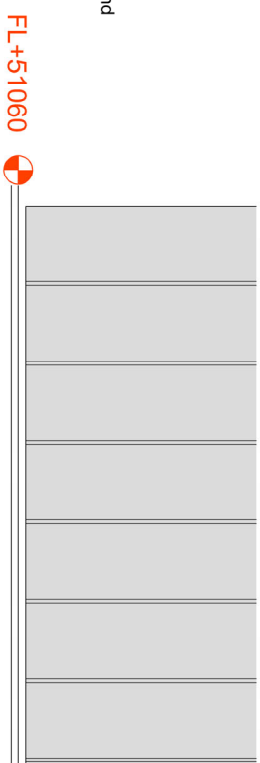
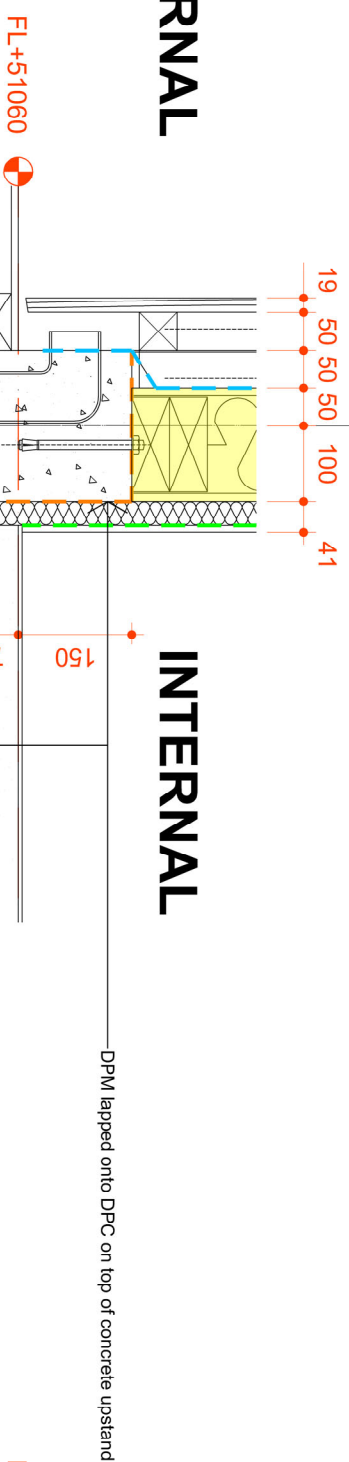
DETAIL 01 - ROOF RIDGE



- 2.6 50x50mm or 32x50mm battens @ 400 centres screw fixed to inside face of SIPs panel. Battens screwed to concrete upstand at low level
 - 2.7 50mm British Gypsum Isowool APR 1200 in cavity formed by 50x50mm battens
 - 2.8 Tyvek VCL SD2
 - 2.9 2 x 12.5mm Gyproc wallboard tapered edges for jointing.
- NOTE** All timber battens/ply painted with an epoxy DPM

DETAIL 02 - ROOF EAVES

EXTERNAL



TimberTech LLP
Simpson Timber Studios
Cliff Road, London NW1 9AN
www.timbertech.com

Client: JLGC
Job Title: The Church Rooms

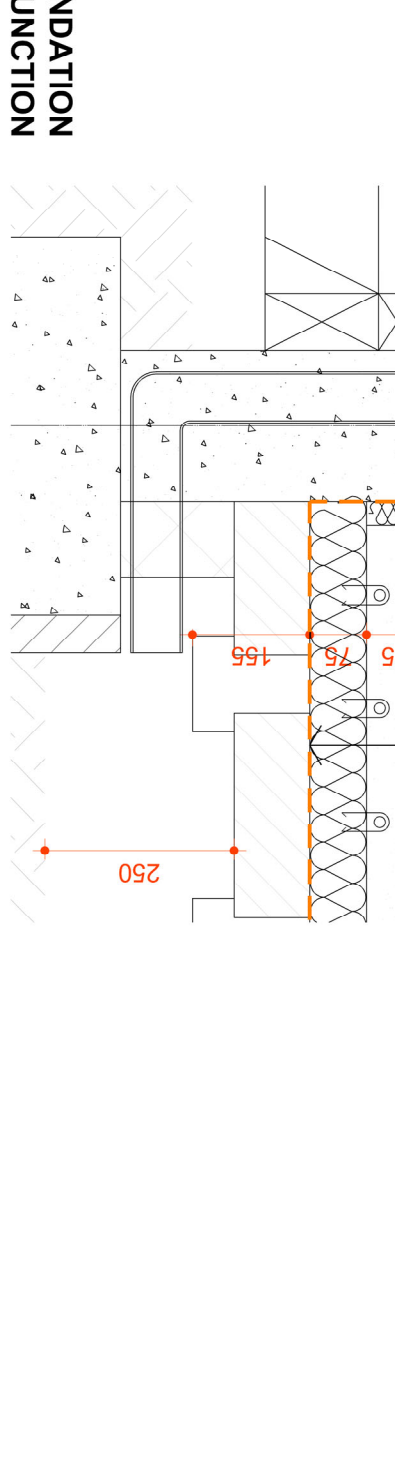
Drawing Title: Proposed Section Details
New Build Extension

Job/DwgNo./Rev: 1259 3000 -

Drawn: GS
Checked: GS
APPR: CB
Date: April 2022

Drawing status: TENDER
Do not scale from this drawing. Check all dimensions on site before ordering.
Scales: 1:5@A1

DETAIL 03 - FOUNDATION & WALL JUNCTION



EXTERNAL ELEVATION