

Fire lobby from below

Bedroom Area  
15 m<sup>2</sup>  
(above 900mm fl)

Ensuite shower

Pair of Grey conservation roof windows centred above the Basin and Toilet in the Ensuite shower room

Retain the hoist equipment and hopper

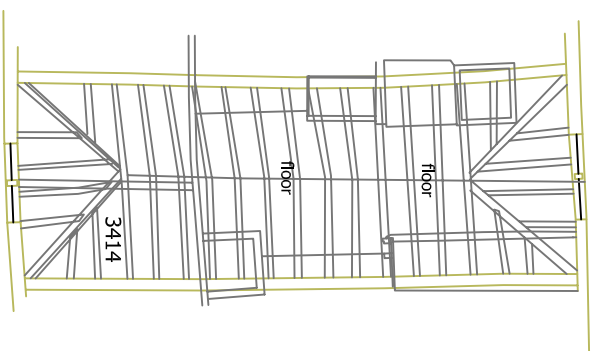
Fill all voids and amend structure in accordance with structural engineers detail. Floor structure and cladding to become half hour fire resistant

Skelling indicated is approximately 900mm above floor level

### SECOND FLOOR PLAN

THE BIN LOFT WILL BE CONVERTED TO A NEW GUEST BEDROOM WITH ENSUITE SHOWER ROOM FACILITIES AND A WALK IN WARDROBE. THE ROOM ACCESSED VIA A STRAIGHT FLIGHT STAIR

Retain the floor dresser. Refurbish and reposition in the room



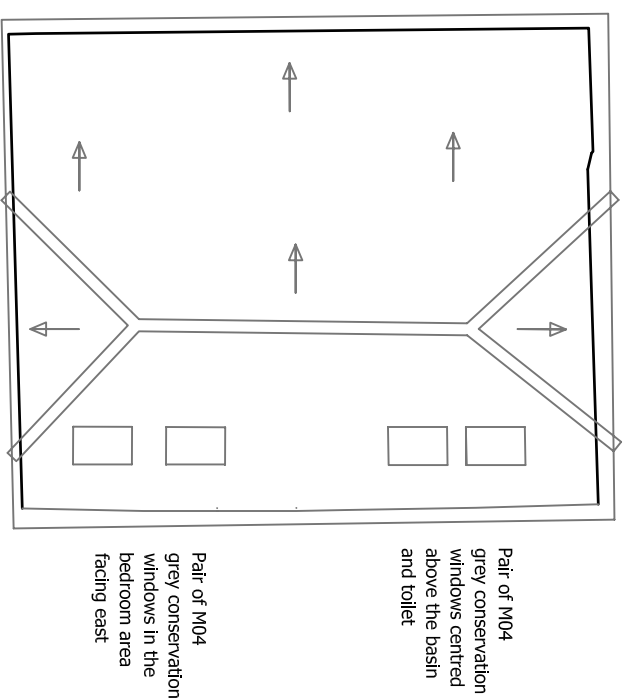
### THIRD FLOOR PLAN

ALL FLOOR STRUCTURE ON THIS FLOOR WILL BE REMOVED PROVIDING ADEQUATE HEADROOM WITHIN THE SECOND FLOOR BIN LOFT BEDROOM

Cloakroom with pocket door providing 800mm clear opening and 900mm minimum access corridor and 750mm minimum space between fittings as Diagram 1.3 and table 1.1 Option- Part M4 (1)

New 38 degree pitched open tread cantilever stair rising in a single flight to the upper levels.

[www.pinterest.co.uk/pin/44824958770833075](http://www.pinterest.co.uk/pin/44824958770833075)

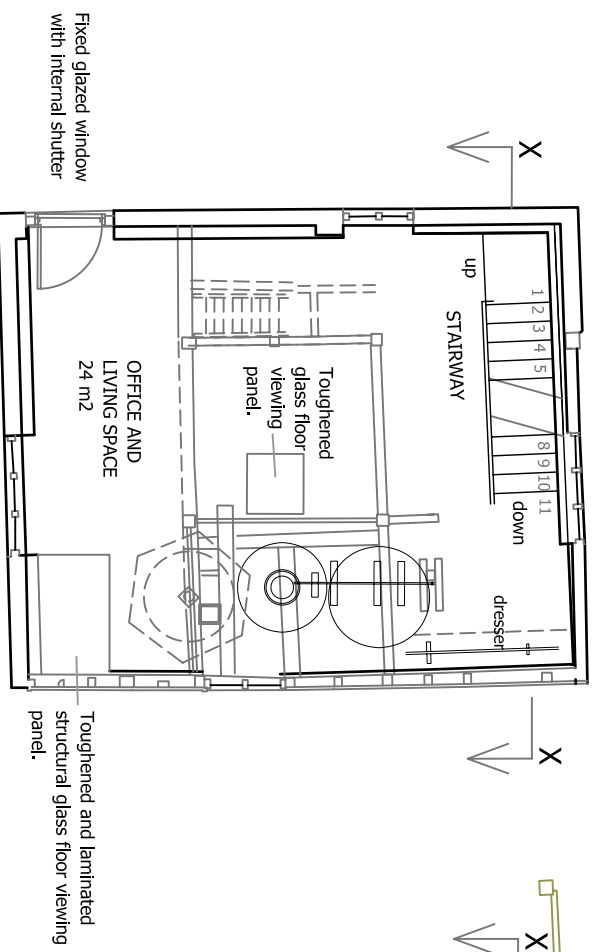


### ROOF PLAN

EXISTING ROOF CLADDING TO BE STRIPPED BACK, SETTING ASIDE SOUND PLAIN TILES. ROOF HEIGHT WILL BE INCREASED BY 150mm. NEW WARM ROOF USING ABOVE AND BETWEEN RAFTER INSULATION CLAD WITH SALVAGED OR NEW WEATHERED RED HANDMADE CLAY PLAIN TILES

Pair of M04 grey conservation windows centred above the basin and toilet

Pair of M04 grey conservation windows in the bedroom area facing east



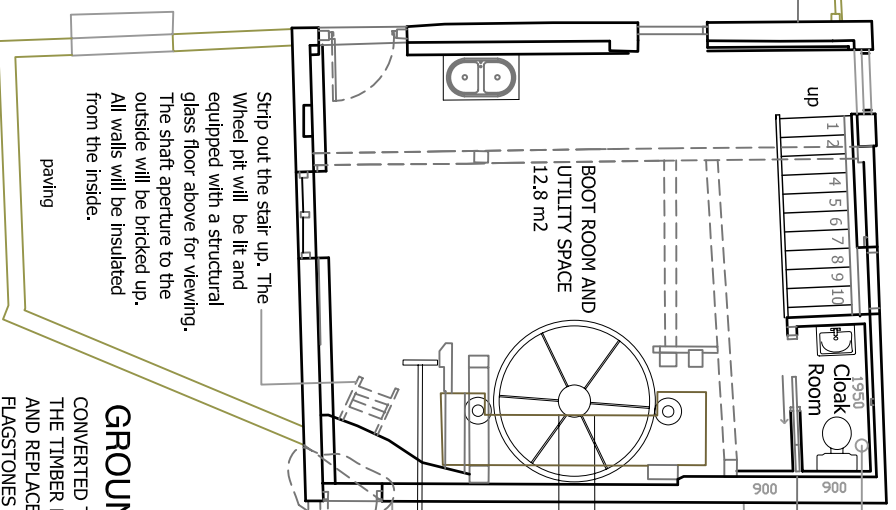
### FIRST FLOOR PLAN

THE STONE FLOOR CONVERTED TO A NEW LIVING AREA AND OFFICE RETAINING THE WORKINGS OF THE MILL INCLUDING PARTITIONS PROTECTED AS NECESSARY. ALL WALLS INSULATED FROM WITHIN USING CELOTEX INSULATION BETWEEN THE TIMBERS AND EACH TIMBER EXPOSED INTERNALLY WITH FOILBACKED PLASTERBOARD TIGHTLY FITTING BETWEEN EACH TIMBER

ALL BRICKWORK WALLS TO BE INSULATED INTERNALLY WITH SPECIAL PLASTER FINISH TO SIMULATE HISTORIC BRICKWORK

Fixed glazed window with internal shutter

Toughened and laminated structural glass floor viewing panel.



### GROUND FLOOR PLAN

CONVERTED TO A BOOT ROOM AND UTILITY SPACE THE TIMBER FLOOR WILL BE STRIPPED OUT AND REPLACED WITH HONEY COLOURED FLAGSTONES OVER AN INSULATED CONCRETE FLOOR WITH UNDER FLOOR HEATING AND DESIGNED TO WITHSTAND FLOODING

Strip out the stair up. The wheel pit will be lift and equipped with a structural glass floor above for viewing. The shaft aperture to the outside will be bricked up. All walls will be insulated from the inside.

Existing door to be removed and replaced with fixed toughened glass vertical window split over two floors. The new infill flooring to be a toughened and laminated structural glass floor viewing panel.

# Architect

Kim Strassman Associates  
Architects and Planning  
Consultants

The Studio  
1 Northgate Cottages  
The Green  
Rottingdean  
East Sussex  
BN2 7DT

t: 01273 383192  
m: 07762808110  
[kimstrassman@live.com](mailto:kimstrassman@live.com)

**Project Name and Address**  
Pilcot Mill  
Dogmersfield  
Hampshire RG27 8SX  
Proposed Plan Alterations  
of the Mill Building

<b>Client</b> L. Fullbrook	<b>Sheet</b> P04 C
<b>Date</b> July 2023	
<b>Scale</b> 1 : 100	

Plan of Proposed Alterations  
Pilcot Mill Building  
Scale 1:100 Paper size A3

