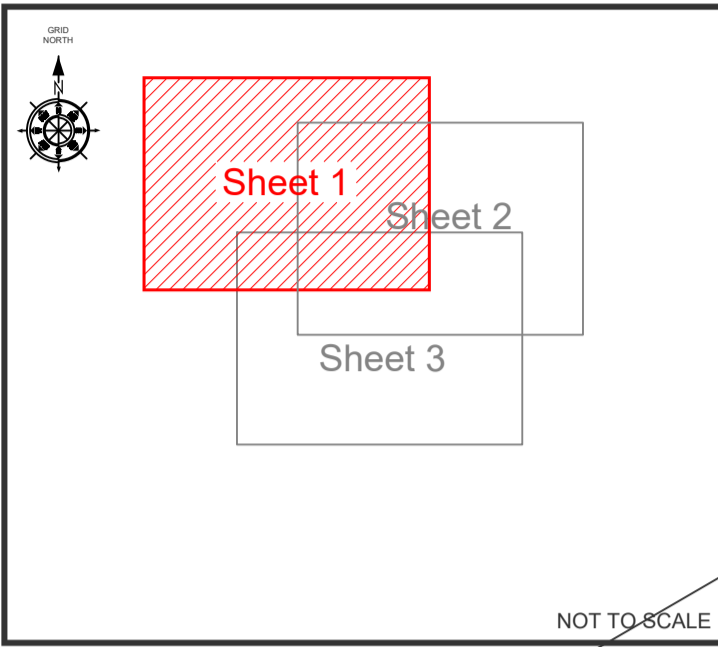




SHEET LAYOUT



8m

New Road

Bikes

Welfare Facilities

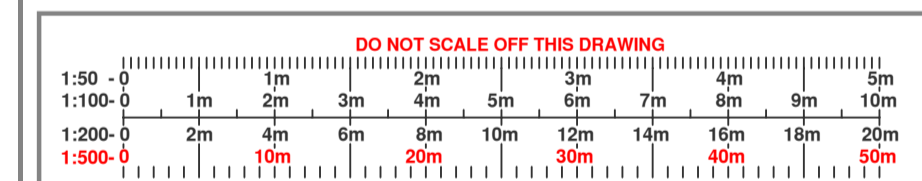
Reception

**Topographical Survey Abbreviations**

|      |                        |      |                     |
|------|------------------------|------|---------------------|
| AC   | AIR CONDITIONING UNIT  | LP   | LAMP POST           |
| B    | BOLLARD                | MKR  | MARKER POST         |
| BB   | BELISHA BEACON         | MH   | MANHOLE             |
| BED  | BED LEVEL              | OHC  | OVERHEAD CABLE      |
| BH   | BOREHOLE (WITH No.)    | PM   | PARKING METER       |
| BS   | BUS STOP               | P    | POST                |
| BT   | BRITISH TELECOM COVER  | RE   | RODDING EYE         |
| CATV | CABLE TELEVISION COVER | RS   | ROAD SIGN           |
| CC   | CONTROL CABINET        | RWL  | RETAINING WALL      |
| CL   | COVER LEVEL (MANHOLE)  | SA   | SOAK AWAY           |
| COL  | COLUMN                 | SCAM | SECURITY CAMERA     |
| CP   | CATCH PIT              | SG   | STRIP GULLY         |
| DP   | RAIN WATER DOWN PIPE   | SP   | SIGN POST           |
| EC   | ELECTRIC CABLE         | SV   | STOP VALVE          |
| EL   | ELECTRIC COVER         | TAP  | WATER TAP           |
| EP   | ELECTRIC POLE          | TGB  | TELEPHONE CALL BACK |
| ER   | EARTH ROD              | THL  | THRESHOLD LEVEL     |
| FFL  | FINISHED FLOOR LEVEL   | TL   | TRAFFIC LIGHT       |
| FH   | FIRE HYDRANT           | TOF  | TOP OF FENCE LEVEL  |
| FLT  | FLOODLIGHT             | TOW  | TOP OF WALL LEVEL   |
| G    | GULLY                  | TP   | TELEGRAPH POLE      |
| GP   | GATE POST              | TPIT | TRIAL PIT (WITH No) |
| GV   | GAS VALVE              | VP   | VENT PIPE           |
| IC   | INSPECTION CHAMBER     | WLV  | WATER LEVEL         |
| IL   | INVERT LEVEL           | WM   | WATER METER         |
| KO   | KERB OUTLET            | WO   | WASH OUT            |
| LB   | LITTER BIN             |      |                     |

BUILDINGS  
 OPEN SIDED BUILDINGS  
 TREE  
SPREAD & DIA. TO SCALE

- Technical Notes:**
- All survey levels and co-ordinates are related to OS Datum using the GPS Active Network. The Grid is orientated to Grid North with a Scale Factor of 1.00.
  - All Boundaries surveyed are physical features. Please bear in mind that these may not represent the legally conveyed ownership.
  - Trees are drawn to scale showing the average canopy spread and are approximate only. Where heights are shown they have been taken from ground level and are an estimate only.
  - All underground features have been measured from the surface, therefore pipe sizes, depths etc are only an estimate or assumption. If dimensions are critical information must be checked and verified prior to work commencing.
  - Whilst every effort has been made to locate all physical features during the survey no responsibility can be taken where features are obscured or hidden at the time of survey. This is especially important where high volumes of plant or vehicles are present on site.
  - Off site features may have been measured remotely and as such may not show the full detail of the feature due to limited access or obstructions with line of sight.
  - All critical dimensions including levels should be checked prior to construction. Any errors or discrepancies should be reported immediately.
  - All measurements have been taken from ground level only.
  - Do not scale from this drawing.
  - Tree Information
    - Trunk Diameters are measured where possible at approximately 1.5m above ground.
    - Tree Spreads are indicative only and are representative of the generalised canopy size, and therefore may not represent the true canopy position as outlined on site. Tree boles may also not sit centrally to the canopy.
    - Where tree heights are shown they are an approximate height to the top of the canopy and are an estimation from ground level.
    - Attention should be paid to the original survey brief as to which trees have actually been surveyed; i.e. Only Trees larger than "X"mm diameter, or Only Trees within the site.



SAXON HOUSE  
21 MARKET SQUARE  
SANDBACH  
CHESHIRE  
CW11 1AT  
TEL: 0800 024 8052  
WEB: WWW.REDBOXSURVEYS.CO.UK  
EMAIL: INFO@REDBOXSURVEYS.CO.UK

Client:  
**Flannigan Estates**

Project:  
**North Selby Mine  
Wheldrake  
York**

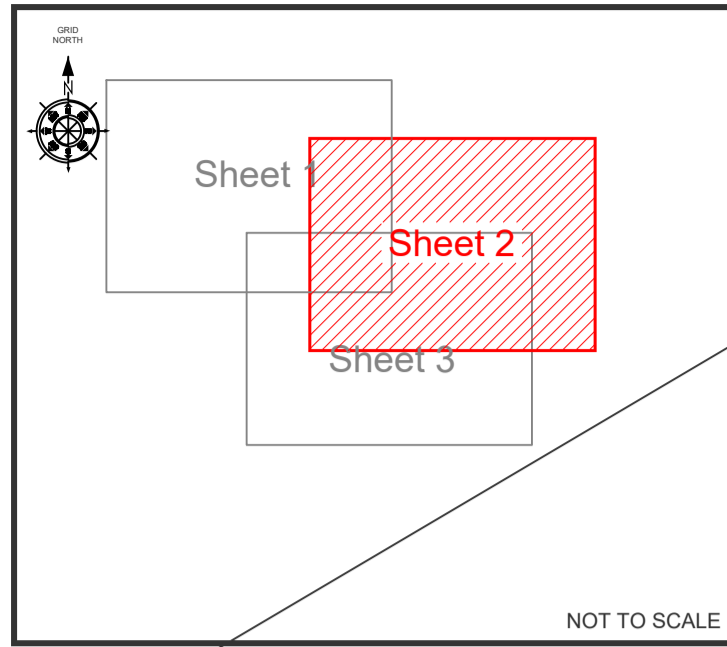
Drawing Title:  
**Site Layout Plan**

| Rev. | Description | Surveyed | Approved | Date |
|------|-------------|----------|----------|------|
|      |             |          |          |      |

|                 |                   |              |                 |                |
|-----------------|-------------------|--------------|-----------------|----------------|
| Surveyor:       | Checked By:       | Approved By: | Date of Survey: | Date of Issue: |
| VM              | AJS               | ART          | 12/10/22        | 13/03/23       |
| Drawing Status: | Scale:            | Paper Size:  | Sheet No:       |                |
| FINAL           | 1:500             | A1           | 1 of 3          |                |
| Project No:     | Drawing No:       | Revision:    |                 |                |
| RBS - 22/2923   | RBS - 22/2923/001 | -            |                 |                |



SHEET LAYOUT



NOT TO SCALE

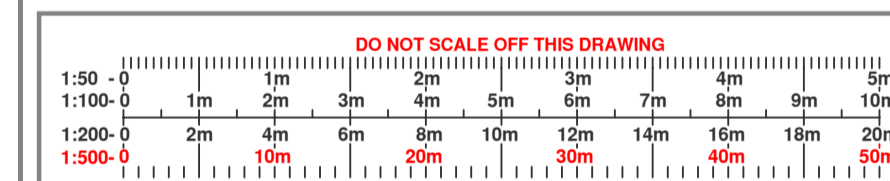
Topographical Survey Abbreviations

|      |                        |      |                     |
|------|------------------------|------|---------------------|
| AC   | AIR CONDITIONING UNIT  | LP   | LAMP POST           |
| B    | BOLLARD                | MKR  | MARKER POST         |
| BB   | BELISHA BEACON         | MH   | MANHOLE             |
| BED  | BED LEVEL              | OHC  | OVERHEAD CABLE      |
| BH   | BOREHOLE (WITH No.)    | PM   | PARKING METER       |
| BS   | BUS STOP               | P    | POST                |
| BT   | BRITISH TELECOM COVER  | RE   | RODDING EYE         |
| CATV | CABLE TELEVISION COVER | RS   | ROAD SIGN           |
| CC   | CONTROL CABINET        | RWL  | RETAINING WALL      |
| CL   | COVER LEVEL (MANHOLE)  | SA   | SOAK AWAY           |
| COL  | COLUMN                 | SCAM | SECURITY CAMERA     |
| CP   | CATCH PIT              | SG   | STRIP GULLY         |
| DP   | RAIN WATER DOWN PIPE   | SP   | SIGN POST           |
| EC   | ELECTRIC CABLE         | SV   | STOP VALVE          |
| EL   | ELECTRIC COVER         | TAP  | WATER TAP           |
| EP   | ELECTRIC POLE          | TGB  | TELEPHONE CALL BACK |
| ER   | EARTH ROD              | THL  | THRESHOLD LEVEL     |
| FFL  | FINISHED FLOOR LEVEL   | TL   | TRAFFIC LIGHT       |
| FH   | FIRE HYDRANT           | TOF  | TOP OF FENCE LEVEL  |
| FLT  | FLOODLIGHT             | TOW  | TOP OF WALL LEVEL   |
| G    | GULLY                  | TP   | TELEGRAPH POLE      |
| GP   | GATE POST              | TPIT | TRIAL PIT (WITH No) |
| GV   | GAS VALVE              | VP   | VENT PIPE           |
| IC   | INSPECTION CHAMBER     | WLW  | WATER LEVEL         |
| IL   | INVERT LEVEL           | WM   | WATER METER         |
| KO   | KERB OUTLET            | WO   | WASH OUT            |
| LB   | LITTER BIN             |      |                     |



Technical Notes:

- All survey levels and co-ordinates are related to OS Datum using the GPS Active Network. The Grid is orientated to Grid North with a Scale Factor of 1.00.
- All Boundaries surveyed are physical features. Please bear in mind that these may not represent the legally conveyed ownership.
- Trees are drawn to scale showing the average canopy spread and are approximate only. Where heights are shown they have been taken from ground level and are an estimate only.
- All underground features have been measured from the surface, therefore pipe sizes, depths etc are only an estimate or assumption. If dimensions are critical information must be checked and verified prior to work commencing.
- Whilst every effort has been made to locate all physical features during the survey no responsibility can be taken where features are obscured or hidden at the time of survey. This is especially important where high volumes of plant or vehicles are present on site.
- Off site features may have been measured remotely and as such may not show the full detail of the feature due to limited access or obstructions with line of sight.
- All critical dimensions including levels should be checked prior to construction. Any errors or discrepancies should be reported immediately.
- All measurements have been taken from ground level only.
- Do not scale from this drawing.
- Tree Information
  - Trunk Diameters are measured where possible at approximately 1.5m above ground.
  - Tree Spreads are indicative only and are representative of the generalised canopy size, and therefore may not represent the true canopy position as outlined on site. Tree boles may also not sit centrally to the canopy.
  - Where tree heights are shown they are an approximate height to the top of the canopy and are an estimation from ground level.
  - Attention should be paid to the original survey brief as to which trees have actually been surveyed; i.e. Only Trees larger than "X"mm diameter, or Only Trees within the site.



SAXON HOUSE  
21 MARKET SQUARE  
SANDBACH  
CHESHIRE  
CW11 1AT  
TEL: 0800 024 8052  
WEB: WWW.REDBOXSURVEYS.CO.UK  
EMAIL: INFO@REDBOXSURVEYS.CO.UK

Client:  
**Flannigan Estates**

Project:  
**North Selby Mine  
Wheldrake  
York**

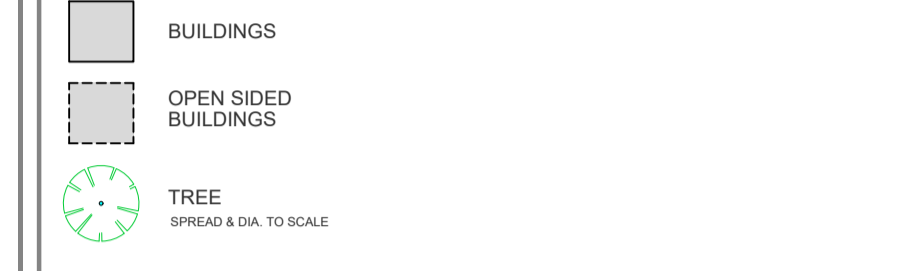
Drawing Title:  
**Site Layout Plan**

| Rev.            | Description       | Surveyed     | Approved        | Date           |
|-----------------|-------------------|--------------|-----------------|----------------|
| Surveyor:       | Checked By:       | Approved By: | Date of Survey: | Date of Issue: |
| VM              | AJS               | ART          | 12/10/22        | 13/03/23       |
| Drawing Status: | Scale:            | Paper Size:  | Sheet No:       |                |
| FINAL           | 1:500             | A1           | 2 of 3          |                |
| Project No:     | Drawing No:       | Revision:    |                 |                |
| RBS - 22/2923   | RBS - 22/2923/001 | -            |                 |                |

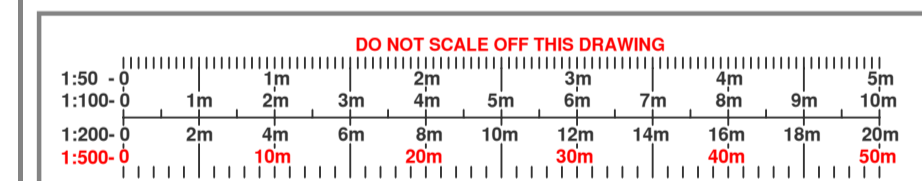


**Topographical Survey Abbreviations**

|      |                        |      |                     |
|------|------------------------|------|---------------------|
| AC   | AIR CONDITIONING UNIT  | LP   | LAMP POST           |
| B    | BOLLARD                | MKR  | MARKER POST         |
| BB   | BELISHA BEACON         | MH   | MANHOLE             |
| BED  | BED LEVEL              | OHC  | OVERHEAD CABLE      |
| BH   | BOREHOLE (WITH No.)    | PM   | PARKING METER       |
| BS   | BUS STOP               | P    | POST                |
| BT   | BRITISH TELECOM COVER  | RE   | RODDING EYE         |
| CATV | CABLE TELEVISION COVER | RS   | ROAD SIGN           |
| CC   | CONTROL CABINET        | RWL  | RETAINING WALL      |
| CL   | COVER LEVEL (MANHOLE)  | SA   | SOAK AWAY           |
| COL  | COLUMN                 | SCAM | SECURITY CAMERA     |
| CP   | CATCH PIT              | SG   | STRIP GULLY         |
| DP   | RAIN WATER DOWN PIPE   | SP   | SIGN POST           |
| EC   | ELECTRIC CABLE         | SV   | STOP VALVE          |
| EL   | ELECTRIC COVER         | TAP  | WATER TAP           |
| EP   | ELECTRIC POLE          | TCB  | TELEPHONE CALL BACK |
| ER   | EARTH ROD              | THL  | THRESHOLD LEVEL     |
| FFL  | FINISHED FLOOR LEVEL   | TL   | TRAFFIC LIGHT       |
| FH   | FIRE HYDRANT           | TOF  | TOP OF FENCE LEVEL  |
| FLT  | FLOODLIGHT             | TOW  | TOP OF WALL LEVEL   |
| G    | GULLY                  | TP   | TELEGRAPH POLE      |
| GP   | GATE POST              | TPIT | TRIAL PIT (WITH No) |
| GV   | GAS VALVE              | VP   | VENT PIPE           |
| IC   | INSPECTION CHAMBER     | WLV  | WATER LEVEL         |
| IL   | INVERT LEVEL           | WM   | WATER METER         |
| KO   | KERB OUTLET            | WO   | WASH OUT            |
| LB   | LITTER BIN             |      |                     |



- Technical Notes:**
- All survey levels and co-ordinates are related to OS Datum using the GPS Active Network. The Grid is orientated to Grid North with a Scale Factor of 1.00.
  - All Boundaries surveyed are physical features. Please bear in mind that these may not represent the legally conveyed ownership.
  - Trees are drawn to scale showing the average canopy spread and are approximate only. Where heights are shown they have been taken from ground level and are an estimate only.
  - All underground features have been measured from the surface, therefore pipe sizes, depths etc are only an estimate or assumption. If dimensions are critical information must be checked and verified prior to work commencing.
  - Whilst every effort has been made to locate all physical features during the survey no responsibility can be taken where features are obscured or hidden at the time of survey. This is especially important where high volumes of plant or vehicles are present on site.
  - Off site features may have been measured remotely and as such may not show the full detail of the feature due to limited access or obstructions with line of sight.
  - All critical dimensions including levels should be checked prior to construction. Any errors or discrepancies should be reported immediately.
  - All measurements have been taken from ground level only.
  - Do not scale from this drawing.
  - Tree Information
    - Trunk Diameters are measured where possible at approximately 1.5m above ground.
    - Tree Spreads are indicative only and are representative of the generalised canopy size, and therefore may not represent the true canopy position as outlined on site. Tree boles may also not sit centrally to the canopy.
    - Where tree heights are shown they are an approximate height to the top of the canopy and are an estimation from ground level.
    - Attention should be paid to the original survey brief as to which trees have actually been surveyed; i.e. Only Trees larger than "X"mm diameter, or Only Trees within the site.



SAXON HOUSE  
21 MARKET SQUARE  
SANDBACH  
CHESHIRE  
CW11 1AT  
TEL: 0800 024 8052  
WEB: WWW.REDBOXSURVEYS.CO.UK  
EMAIL: INFO@REDBOXSURVEYS.CO.UK

Client:  
**Flannigan Estates**

Project:  
**North Selby Mine  
Wheldrake  
York**

Drawing Title:  
**Site Layout Plan**

| Rev. | Description | Surveyed | Approved | Date |
|------|-------------|----------|----------|------|
|      |             |          |          |      |

|                 |                   |              |                 |                |
|-----------------|-------------------|--------------|-----------------|----------------|
| Surveyor:       | Checked By:       | Approved By: | Date of Survey: | Date of Issue: |
| VM              | AJS               | ART          | 12/10/22        | 13/03/23       |
| Drawing Status: | Scale:            | Paper Size:  | Sheet No:       |                |
| FINAL           | 1:500             | A1           | 3 of 3          |                |
| Project No:     | Drawing No:       | Revision:    |                 |                |
| RBS - 22/2923   | RBS - 22/2923/001 | -            |                 |                |



City of York Council  
 Selby District Council /  
 North Yorkshire County Council