

GUTTERCREST

ALUMINIUM

RAINWATER GOODS | FACADES | FASCIAS | SOFFITS | COPINGS | COLUMN CASINGS | WINDOW PODS

Dan Wythe

Date: 12/07/2023

Thank you for your valued enquiry. We have pleasure in providing your estimate for the supply only of our products for your project

Oak Hall Farm

Your Reference: E85902-A

Please use this reference in all future correspondence

Your estimate has been prepared by

Ian Ridgeway

If you require any further information or help then please contact me



HUSK ARCHITECTURAL
ARCHITECTURAL

FACADES | RAINSCREEN
FASCIAS | SOFFITS

ALI-FABS COPINGS
& CAPPINGS

COPINGS | CAPPINGS

CONCEAL COLUMN
CASINGS

COLUMN CASINGS
BEAM CASINGS

WINDYPODS WINDOW
SURROUNDS

WINDOW SURROUNDS

GUTTERCREST LIMITED. QUEEN ELIZABETH DRIVE, OSWESTRY, SHROPSHIRE SY11 2UQ

T 01691 663300 F 01691 663311 info@guttercrest.co.uk guttercrest.co.uk

Guttercrest Limited is a limited company registered in England and Wales. Registered No. 02208404. VAT No. GB 489138109.



GUTTERCREST LIMITED.
 QUEEN ELIZABETH DRIVE,
 OSWESTRY, SHROPSHIRE SY11 2UQ
 01691 663300 info@guttercrest.co.uk

Estimate

Date: **12-Jul-23**

Project: **Oak Hall Farm**

Our Ref: **E85902-A**

Code	Description	Price Each	Qty	Total
HR4*	150mm ALUMINIUM HALF ROUND GUTTER with external welded collars. Joined with aluminium rivets and sealed using Arbosil 1090 silicone sealant and butyl tape. Gutters mounted in fascia brackets at maximum 1000mm centres and fixed using stainless steel fixings. Polyester powder coated inside and out to any standard colour. GUTTERCREST DESIGN AND MANUFACTURE STANDARD GUTTERS TO COMPLY WITH BS9101:2017			
HR4/1P	150mm Half Round Gutter 3.0m	£60.21	14	£842.94
HR4/3P	150mm Half Round 90deg Angle	£18.91	3	£56.73
HR4/9P	150mm Half Round Stop End	£5.69	7	£39.83
HR4/14P	150mm Half Round 75mm dia O/let	£21.00	4	£84.00
HR4/28P	150mm Half Round Facia Bkt	£3.99	52	£207.48
RW2*	75mm ROUND ALUMINIUM DOWNPIPES with TRADITIONAL CAST COLLARS giving a 35mm stand-off. Standard range of components available to suit most requirements with any bespoke components manufactured as required. Fixed at collars using stainless steel fixings. Polyester powder coated to any standard colour.			
RW2T/1P	75mm Traditional Round Downpipe 3.0mtr	£46.54	5	£232.70
			Parts Total:	£1,463.68

Fasteners and Fixings

Code	Description	Price Each	Qty	Total
GM2	100no Gutter Fixing 38mm x 5.5 (Wood)	£12.00	1	£12.00
GM202	4.8x14.7 All Aluminium sealed Rivet [100pk]	£12.03	1	£12.03
GM30	380ml Cartridge Silicone Sealant - Grey	£11.07	3	£33.21
GM32	1no 12mtr Reel Butyl Tape 12mm x 3mm	£4.67	2	£9.34
GM40	Touch Up Paint - Colour to match order	£23.35	1	£23.35
			Fixings Total:	£89.93

Finish Required:

Heritage Black Finish

Please Use Our Reference In All Correspondence

Carriage:
 Nett Goods Total: £1,553.61

TERMS / ORDERING

Available Through Builders and Plumbers Merchants or direct from us with PROFORMA payment.

Estimate valid for 28 days.

Estimate Nett and subject to VAT.

Estimate subject to final specification and colour.

All quantities, products and colours to be checked and verified by the purchaser prior to order.

Unless stated above we have not included Marine / Harsh Environment paint finish, recommended for

GUTTERCREST

STANDARD DOWNPIPE DATA SHEET

ROUND



TRADITIONAL (RW#T)

Extruded round aluminium downpipes with traditional cast collars.

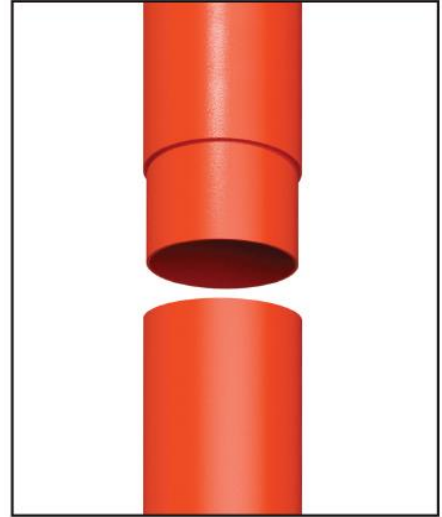
Sizes available: 2.5" 3" 4" 6"



PLAIN (RW#)

Extruded round aluminium downpipes with neat plain collars and pipe clips. Also available as a flush jointed system. (Internal spigots).

Sizes available: 2.5" 3" 4" 5" 6" 8"



SMOOTHLINE (RW#S)

Our aluminium smoothline round downpipes are the ultimate in smooth, 'clean lines' downpipes. Featuring flush joints for a smoothline appearance.

Sizes available: 2.5" 3" 4" 5" 6"

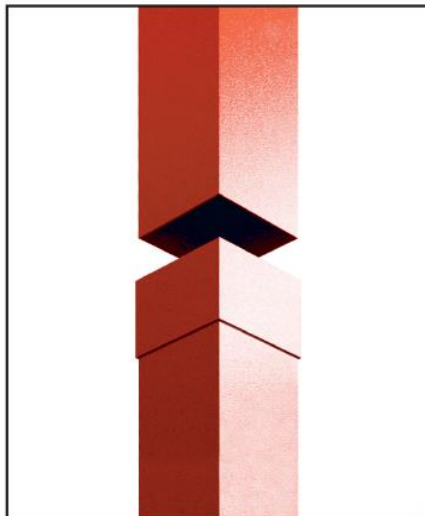
SQUARE & RECTANGULAR



GEORGIAN (RW##G)

Extruded square and rectangular aluminium downpipes with Georgian style.

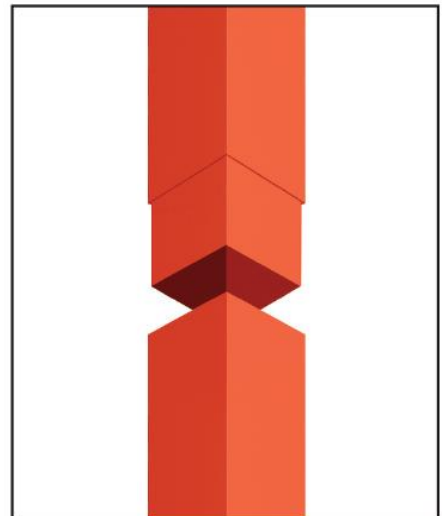
Sizes available: 3x2" 3x3" 4x3" 4x4"



PLAIN (RW##)

Extruded square and rectangular aluminium downpipes with neat plain collars and pipe clips. Also available as a flush jointed system. (Internal spigots).

Sizes available: 3x2" 3x3" 4x3" 4x4" 6x4" 6x6"



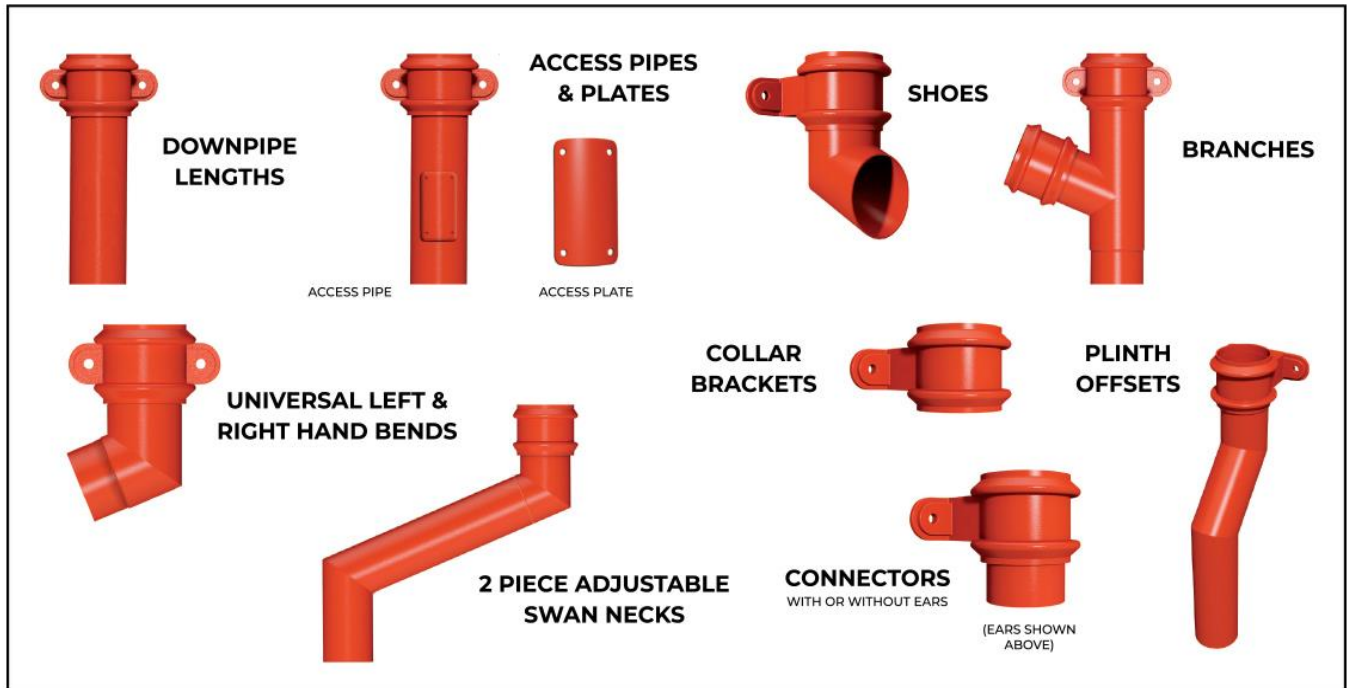
SMOOTHLINE (RW##S)

Our aluminium smoothline square downpipes are the ultimate in smooth, 'clean lines' downpipes. Featuring flush joints for a smoothline appearance.

Sizes available: 3x2" 3x3" 4x3" 4x4" 6x4" 6x6"

STANDARD COMPONENTS

(USING TRADITIONAL ROUND DOWNPIPES AS AN EXAMPLE)



MATERIALS

All materials used are marine grade aluminium alloys, highly resistant to corrosion. Aluminium is a highly sustainable and recyclable material.

PRODUCTS

All Guttercrest's products are manufactured in our state-of-the-art facility in Oswestry, Shropshire.

COATINGS & FINISHES

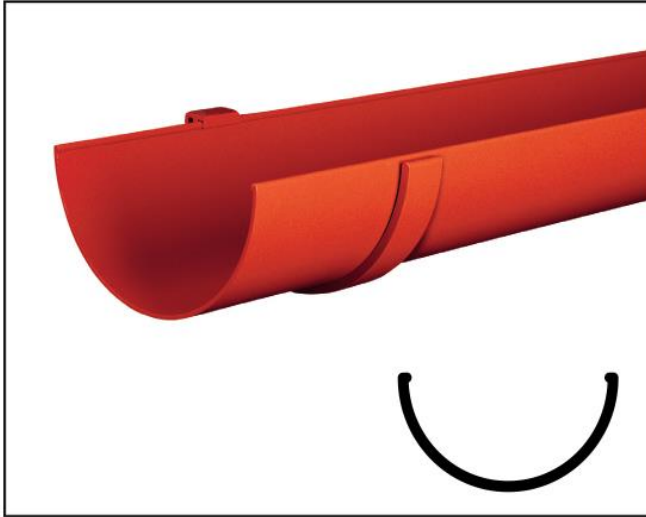
All our products are available polyester powder coated in a wide array of colours and finishes including the full range of RAL colours, BS colours, heritage textured finishes, metallic finishes, and anodised coating.

We can also source special colours and finishes to match your project requirements or we can supply our aluminium downpipes in the standard mill finish.

IF YOU DON'T SEE WHAT YOU WANT PLEASE ASK!

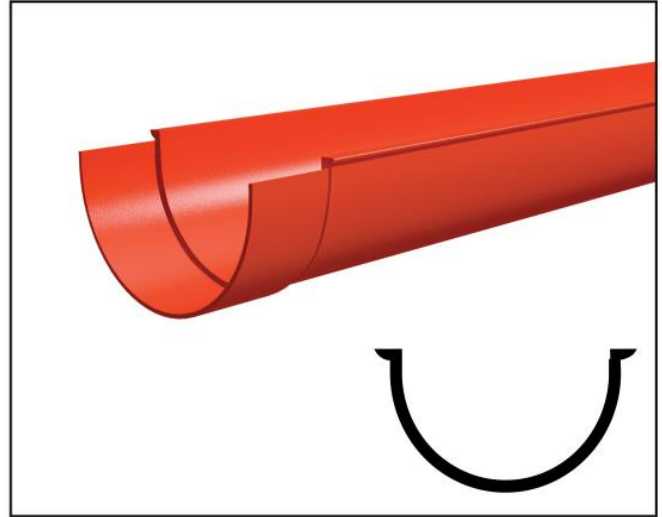
GUTTERCREST

EXTRUDED GUTTERS DATA SHEET



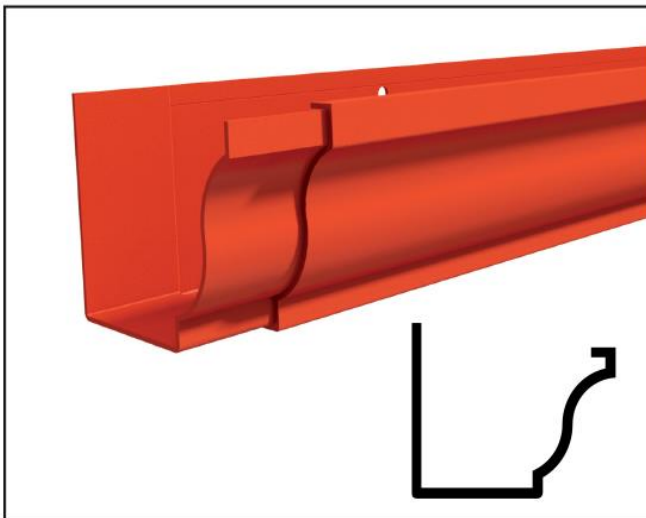
HALF ROUND (HR#)

Extruded aluminium Half Round gutters. Fully welded external collars. Gutters fitted with standard brackets to fascia at maximum 1m centres. Polyester powder coated inside and out.
Sizes available: 4" 4.5" 5" 6"



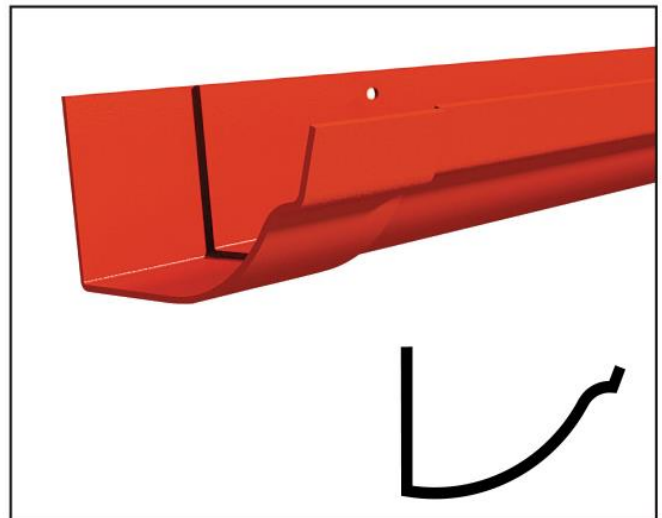
BEADED DEEP FLOW (BDF#)

Extruded aluminium Beaded Deep Flow gutters. Fully welded external collars. Gutters fitted with standard brackets to fascia at maximum 1m centres. Polyester powder coated inside and out.
Sizes available: 4" 5" 6"



MOULDED OGEE (MOG#)

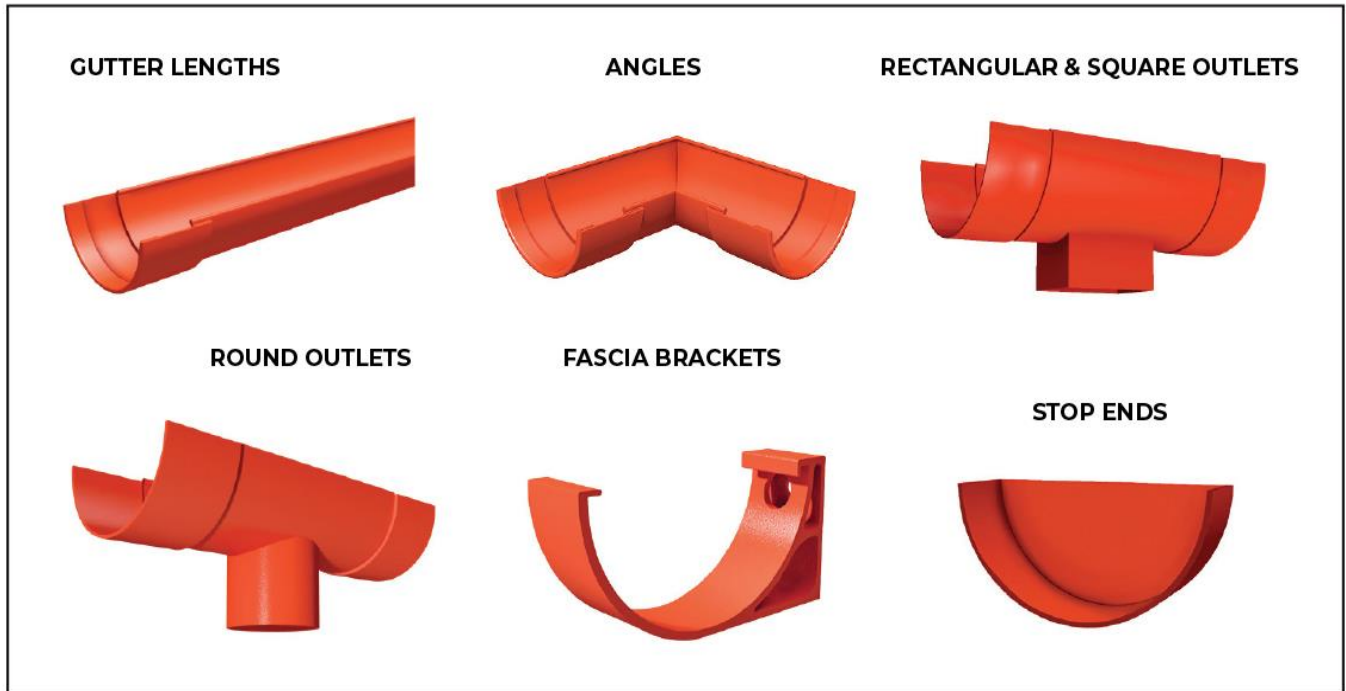
Extruded aluminium Moulded Ogee gutters with welded internal butt straps. Direct fixed to background at maximum 450 centres. Polyester powder coated on outer face only.
Sizes available: 4x3" 5x4" 6x4"



VICTORIAN OGEE (VOG#)

Extruded aluminium Victorian Ogee gutters with welded external butt straps. Direct fixed to background at maximum 450 centres. Polyester powder coated inside and out.
Sizes available: 4" 4.5" 5" 6"

STANDARD COMPONENTS (USING HALF ROUND GUTTERS AS AN EXAMPLE)



MATERIALS

All materials used are marine grade aluminium alloys, highly resistant to corrosion. Aluminium is a highly sustainable and recyclable material.

PRODUCTS

Guttercrest products are manufactured in our state-of-the-art facility in Oswestry, Shropshire. All standard gutters have fully welded end straps and are manufactured to comply with BS9101:2017, ensuring our gutters are amongst the most robust and best quality available, giving peace of mind for years to come.

COATINGS & FINISHES

All our products are available polyester powder coated in a wide array of colours and finishes including the full range of RAL colours, BS colours, heritage textured finishes, metallic finishes, and anodised coating.

We can also source special colours and finishes to match your project requirements or we can supply our aluminium downpipes in the standard mill finish.

IF YOU DON'T SEE WHAT YOU WANT PLEASE ASK!