

## SCHEDULE OF PROPOSED MATERIALS

HA22-216 - Cock Inn, Shoreham Lane, Halstead, Sevenoaks TN14 7DD

Consented Application Number: 22/03489/FUL



Front Elevation (West)

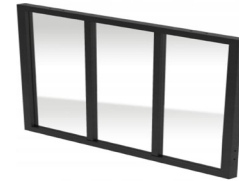
### Infill panels

Brick-  
 Wienerberger, Graphite Black, 215mm x 102.5mm x 65mm  
 Mortar-  
 Dark, colour to match Wienerberger Graphite Black brick



### Windows

Momford & Wood - Conservation - Casement  
 Timber frame, colour black, double glazed



### Existing brick

Painted brick, colour off white



### Proposed brick

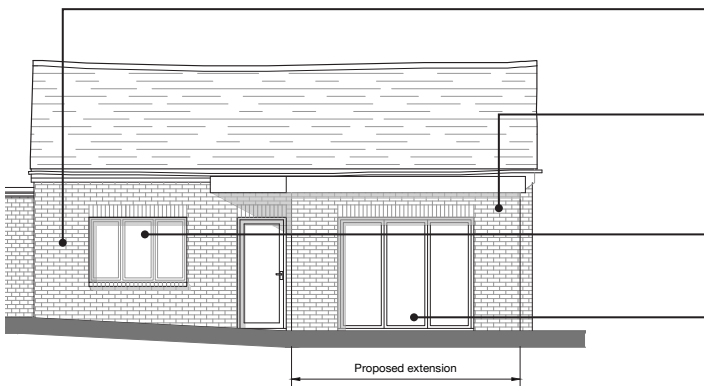
Painted stock brick, colour off white

### Windows

Momford & Wood - Conservation - Casement  
 Timber frame, colour black, double glazed

### Bifold doors

Powder coated aluminium, colour black



Rear Elevation (East)