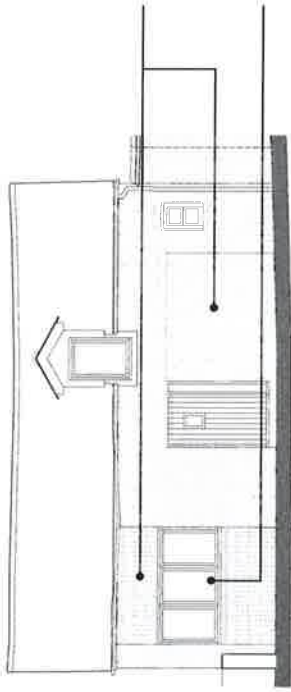


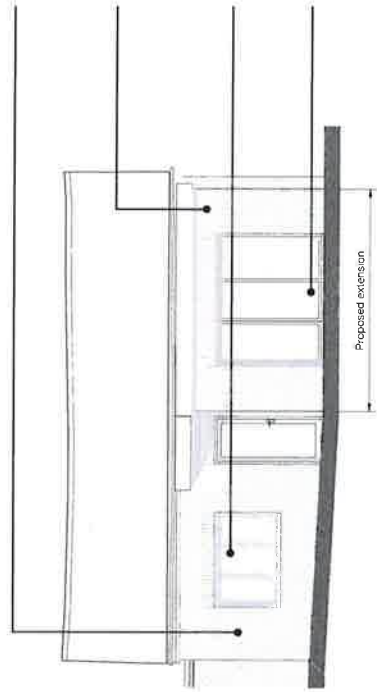
## SCHEDULE OF PROPOSED MATERIALS

HA22-216 - Cock Inn, Shoreham Lane, Halstead, Sevenoaks TN14 7DD

Consented Application Number: 22/03489/FUL



Front Elevation (West)



Rear Elevation (East)

### Infill panels

**Brick-**  
 Wienerberger, Graphite Black, 215mm x 102.5mm x 65mm  
**Mortar-**  
 Dark, colour to match Wienerberger Graphite Black brick

### Windows

Momford & Wood - Conservation - Casement  
 Timber frame, colour black, double glazed

### Existing brick

Painted brick, colour off white

### Proposed brick

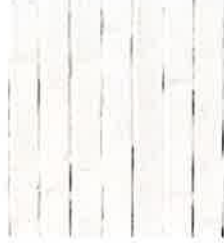
Painted stock brick, colour off white

### Windows

Momford & Wood - Conservation - Casement  
 Timber frame, colour black, double glazed

### Bifold doors

Powder coated aluminium, colour black



# Graphite Black

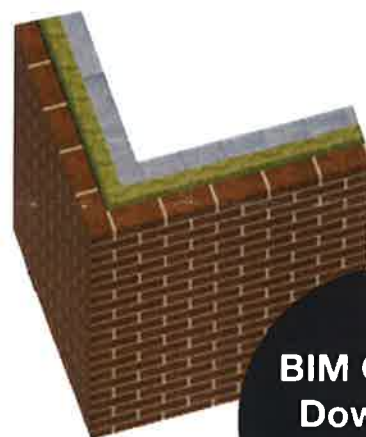
## Product Technical Information Sheet

Wienerberger Code	154915
Production Plant	Beerse (Belgium)
Manufacture	Soft Mud Moulded Stock
Configuration	Frogged
Colour	Black
Appearance	Creased
Work Size (mm)	215 x 102.5 x 65
Pack Quantity	528 No.
Individual Dry Brick Weight (kg)	2.7



## Technical Properties to BS EN 771-1

Size Tolerance (Mean/Range)	T1/R1
Gross Dry Density (kg/m <sup>3</sup> /Tolerance)	1800 (D1)
Compressive Strength (N/mm <sup>2</sup> )	≥7
Thermal Conductivity (W/(m·K))	P=90% 0.69
λ <sub>10,dry,unit</sub> value (EN 1745 tabulated: S1)	
Durability Designation	F2
Water Absorption (%)	≤9
Initial Rate of Water Absorption (kg/(m <sup>2</sup> ·min))	Min. 1.0 Max. 5.0
Active Soluble Salts	S2
Reaction to Fire	Class A1



**BIM Objects  
Download**



### Issue Date: 26/05/2021

Technical data correct at time of issue. Individual dry brick weights can vary and are for guidance only. Any questions regarding this data should be referred to the Wienerberger Technical Department. Due to the limitations of screen and print colour representation of product images it is advised that brick samples are viewed prior to ordering.