

LEGEND

Utility Symbols	Gas	Water
Electric	Heating Pipe	Drain
... (many more symbols and their corresponding utility types)

UTILITY SURVEY INFORMATION

Location by Ground Penetrating Radar (GPR) - Unable to Survey

Area of Concern (ADC) - Unable to Survey

Confirmed Survey Area (CSA) - Unable to Trace

Precise Survey Area (PSA) - Unable to Trace (due to blockage)

Depth to Top of Service (metres) (DTS) - Unable to Trace Further

ABBREVIATIONS used on a PAS 128 Survey

(D: 0.00 DPT) 0.00m - Depth in metres, 0.0 - Quality Level, P - Post processed GPR

TOPOGRAPHIC UTILITY DETAILS

Barrel (symbol - road)	Post	PO
Bus Stop	Road Sign	RS
...

General Notes

Utilities may continue outside of the survey area. Any point marks outside of the area are for investigative purposes only and may not represent the full extent of the sub-surface utilities.

Only sub-surface utility information is provided. Above ground utility information may be shown where it assists with positional referencing.

Where logic indicates a utility exists but which cannot be positively confirmed with the technology, an assumed route (ASR) is recorded.

Survey Dimensions do not procure statutory or private source utility information as part of its detection service nor does it record any such information in a utility survey unless otherwise noted. Statutory plans should be consulted to supplement this survey.

Vertical & Horizontal Position - Vertical position (depth) is indicative to the top of the utility feature and is recorded as depth to top of service and should not be taken as exact. Where depth information from the technology is unclear, depth is not shown. Drains may have been detected using threading and the depth indicated could be between the top and the bottom of the drain. Horizontal position is indicative to the centre of the utility feature and should not be taken as exact.

Warranty - Biodegradable paints are used to mark out the position of the utilities. Before long paint markings may become illegible depending on ground, weather and traffic conditions. No warranty is given in respect of the durability of the paint markings and that they are a complete representation of the sub-surface utilities therefore this drawing should be used as the primary reference for the survey results.

This drawing does not provide an absolute representation of the sub-surface. Utilities have been detected using non-invasive technologies only and the performance can be adversely affected by ground, weather and site conditions outside of our control therefore some utilities may be undetectable. While we use reasonable endeavours to detect all utilities it does not warrant that 100% detection will be achieved and that approximate depth penetration of the technologies will be greater than two metres.

Sewer and manhole details shown on this drawing have been obtained by observation and measurement of the surface and as such cannot be guaranteed. Where precise sewer details will be critical to the project design we would recommend that entry into the chamber be undertaken using a specialist team, appropriately qualified for confined space entry. These teams can be supplied on request.

In respect of the information provided by a utility survey and statutory plans, excavation work should be undertaken with extreme caution and in accordance with HSE Guidelines - HSG47 Avoiding Danger from Underground Services

Sheet 01

SHEET LAYOUT

Rev	Description	Drawn/Chk.	Date

Survey Dimensions Ltd
Measured surveys of land and buildings

01726 390 010
+44 (0) 7970 205 932
+44 (0) 7970 205 935
info@SurveyDimensions.co.uk
www.SurveyDimensions.co.uk

Project Title:
**42 Fore Street
Bugle
St.Austell
PL26 8PE**

Client:
Ben Evans

Drawing Title:
Topographical Survey

Scale: 1 : 100 @ A1	Drawn: MWS
Date: 16-02-2022	Checked: PW
Drawing Status: SURVEY	Surveyor: KC
Project Ref: 220116	Draw No: 01

This Drawing is Copyright. Contractors and Consultants must check all dimensions on site. Only figured dimensions are to be used. This drawing shall be used only for the purpose intended.

N58780

N58775

N58770

N58765

N58760

N58755

S551023

S551023

S551023

S551023

S551023

S551023

S551023



N58780

N58775

N58770

N58765

N58760

N58755

LEGEND

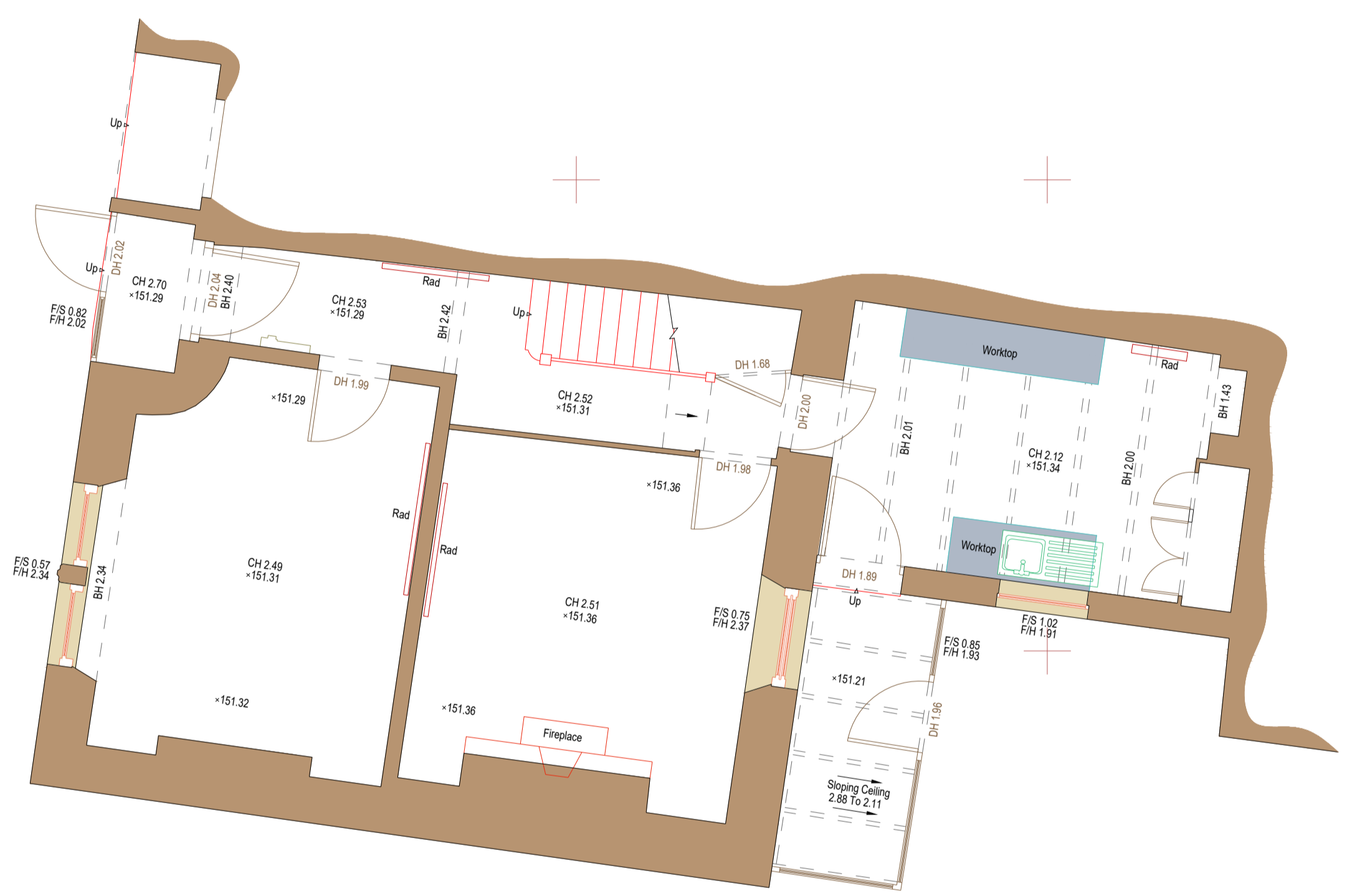
Utility Symbols	Gas	Water
Blank Telecom	Heating Pipe	Water
Cable Television	M/Cables	Water
Closed Circuit Television	Multiple Services Route	Water
Commodities	OH	Water
Drainage - Combined Water	Oxygen	Water
Drainage - Fuel Water	Street Lighting	Water
Drainage - Storm Water	Traffic Signal Loop	Water
Drainage - Sewer	Unknown	Water
Electric	Unknown Cable	Water
Fire Alarm Man	Unknown Pipe	Water
Fire Alarm	Water	Water
Fire Alarm		
Fire Alarm		

UTILITY SURVEY INFORMATION
 Located by Ground Penetrating Radar GPR
 Area of Concern
 Confirmed Survey Area
 Presumed Survey Area
 Depth to Top of Service (metres)

ABREVIATIONS used on a PAS 128 Survey
 CH (mm) = CH 2.00 = Depth in metres, 02 = Quality Level, P = Post processed GPR

TOPOGRAPHIC UTILITY DETAILS

Barrel (symbol - road)	Post	PO
Barrel Beacon	Rain Water Pipe	RWP
Barrel	Road Sign	RS
Borehole	Roasting Eye	RE
British Telecoms IC	Sign Post	SP
Building (contour line detail)	Spot Light	SL
Cable Hoop Ground	Spot Height	SH
Cable TV Box	Stop Sign	SS
CTV Camera	Stop Valve	SV
Cover Level in metres	Survey Station	SS
Direction of Flow (Drainage)	Telephone Pole	TP
Electric Cabinet	Traffic Light	TL
Electric Pole	Tree	T
Electric Sign	Unknown Valve	UV
Embankment	Vald Pipe	VP
Facade Flair	Well	W
Flag Pole	Water Pipe	WP
Flood Light	Water Meter	WM
Gas Valve	Water Valve	WV
Gate	Well	W
Ground Level in metres	Well Pipe	WP
Gravel	Well Pipe	WP
Insect Level in metres	Well Pipe	WP
Junction Box - BT	Well Pipe	WP
Junction Box - Comms	Well Pipe	WP
Junction Box - Elec	Well Pipe	WP
Lamp Post	Well Pipe	WP
Light Bulber	Well Pipe	WP
Light Ground	Well Pipe	WP
Manhole	Well Pipe	WP
Manhole Capped Post	Well Pipe	WP
Pipe Chamber in metres	Well Pipe	WP
Pipe into Ground	Well Pipe	WP



General Notes

Utilities may continue outside of the survey area. Any point marks outside of the area are for investigative purposes only and may not represent the full extent of the sub-surface utilities.

Only sub-surface utility information is provided. Above ground utility information may be shown where it assists with positional referencing.

Where logic indicates a utility exists but which cannot be positively confirmed with the technology, an assumed route (ASR) is recorded.

Survey Dimensions do not procure statutory or private source utility information as part of its detection service nor does it record any such information in a utility survey unless otherwise noted. Stationary plans should be consulted to supplement this survey.

Vertical & Horizontal Position - Vertical position (depth) is indicative to the top of the utility feature and is recorded as depth to top of service and should not be taken as exact. Where depth information from the technology is unclear, depth is not shown. Drains may have been detected using threading and the depth indicated could be between the top and the bottom of the drain. Horizontal position is indicative to the centre of the utility feature and should not be taken as exact.

Warranty - Biodegradable paints are used to mark out the position of the utilities. Before long paint markings may become illegible depending on ground, weather and traffic conditions. No warranty is given in respect of the durability of the paint markings and that they are a complete representation of the sub-surface utilities therefore this drawing should be used as the primary reference for the survey results.

This drawing does not provide an absolute representation of the sub-surface. Utilities have been detected using non-invasive technologies only and the performance can be adversely affected by ground, weather and site conditions outside of our control therefore some utilities may be undetectable. While we use reasonable endeavours to detect all utilities it does not warrant that 100% detection will be achieved and that approximate depth penetration of the technologies will be greater than two metres.

Sewer and manhole details shown on this drawing have been obtained by observation and measurement from the surface and as such cannot be guaranteed. Where precise sewer details will be critical to the project design we would recommend that entry into the chamber be undertaken using a specialist team, appropriately qualified for confined space entry. These teams can be supplied on request.

Irrespective of the information provided by a utility survey and statutory plans, excavation work should be undertaken with extreme caution and in accordance with HSE Guidelines - HSG47 Avoiding Danger from Underground Services

Sheet 01

SHEET LAYOUT

Rev	Description	Drawn/Chk.	Date

Survey Dimensions Ltd
 Measured surveys of land and buildings

01726 390 010
 +44 (0) 7970 205 932
 +44 (0) 7970 205 935
 info@SurveyDimensions.co.uk
 www.SurveyDimensions.co.uk

Project Title:
 42 Fore Street
 Bugle
 St.Austell
 PL26 8PE

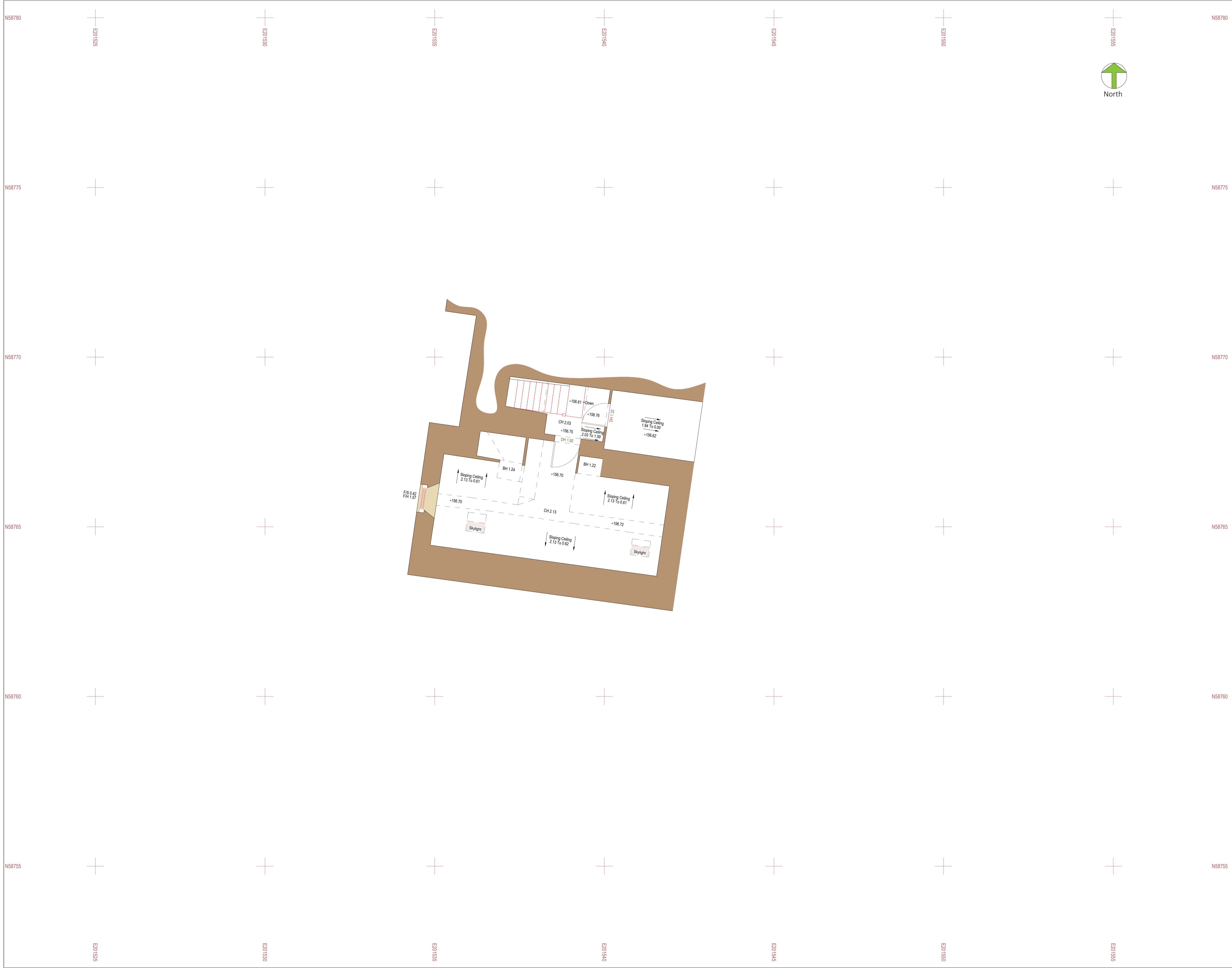
Client:
 Ben Evans

Drawing Title:
 Ground Floor Plan

Scale: 1 : 50 @ A1	Drawn: MWS
Date: 16-02-2022	Checked: PW
Drawing Status: SURVEY	Surveyor: KC

Project Ref:	Dwg No:	Rev:
220116	02	

THIS DRAWING IS COPYRIGHT. Contractors and Consultants must check all dimensions on site. Only figured dimensions are to be used. This drawing shall be used only for the purpose intended.



LEGEND

Utility Line Types	Gas	Water
Brian Telecom	Heating Pipes	Water
Cable Television	Hot/Cold	Water
Comms	Multiple Services Route	Water
Comms	OH	Water
Change - Combined Water	Oxygen	Water
Change - Fuel Water	Street Lighting	Water
Change - Storm Water	Traffic Signal Loop	Water
Change - Sewer	Unknown	Water
Electric	Unknown Cable	Water
Fire Alarm Man	Unknown Pipe	Water
Flow Optic	Water	Water
Fibre		

Assumed Service Route - See GENERAL NOTES
(Using abbreviation of service and colour as above)

UTILITY SURVEY INFORMATION
(Using abbreviation of service and colour as above)

Location by Ground Penetrating Radar	GPR	Unable to Survey	UTS
Area of Concern	AC	Unable to Trace	UTL
Confirmed Survey Area	CSA	Unable to Trace (due to blockage)	UTD
Pressure Survey Area	PSA	Unable to Trace (due to blockage)	UTD
Depth to Top of Service (metres)	DT	Unable to Trace Further	UTD
	DT	End of Trace	ETD

ABBREVIATIONS used on a PAS 128 Survey
(Using abbreviation of service and colour as above)

TOPOGRAPHIC UTILITY DETAILS

Barrel (vertical - road)	BS	Post	PO
Basin Beacon	BB	Rain Water Pipe	RWP
Basin	B	Road Sign	RS
Borehole	BH	Rustling Eye	RE
British Telecoms IC	BT IC	Sign Post	SP
Building (non-invasive detail)	BD	Spot Light	SL
Cable Hoop Ground	CHG	Spot Meters	SM
Cable TV Box	CTV	Stop Valve	SV
CCTV Camera	CC	Survey Station	SS
Cover Level in metres	CL	Telephone Pole	TP
Direction of Flow (Drainage)	DF	Traffic Light	TL
Electric Cabinet	EC	Tree	T
Electric Pole	EP	Unknown Valve	UV
Electric Sign	ES	Wall	W
Embankment	E	Water Pipe	WP
Facade Panel	FP	Water Meter	WM
Flag Post	FP	Water Valve	WV
Flag Pole	FP	Water Valve	WV
Flood Light	FL	Water Valve	WV
Gas Valve	GV		
Gate	G		
Ground Level in metres	GL		
Gully	G		
Inspect Cover	IC	Building Canopy	BC
Invert Level in metres	IL	Cash Barrier	CB
Junction Box - BT	JB BT	Chamber Chamber	CC
Junction Box - Comms	JB COM	Drop Kettle (level in metres)	DK
Junction Box - Elec	JB E	Edge Detail (level in metres)	ED
Lamp Post	LP	Foghorn (level in metres)	FO
Light Bulber	LB	Fence	F
Light in ground	LIG	Heave Face	HF
Manhole	MH	Kerb channel (level in metres)	KC
Manhole Capped Post	MCP	Kerb top (level in metres)	KT
Pipe Chamber in metres	PC	Overhead Service Line	OSL
Pipe into Ground	PIG	Pedestrian Railing	PR

General Notes

Utilities may continue outside of the survey area. Any point marks outside of the area are for investigative purposes only and may not represent the full extent of the sub-surface utilities.

Only sub-surface utility information is provided. Above ground utility information may be shown where it assists with positional referencing.

Where logic indicates a utility exists but which cannot be positively confirmed with the technology, an assumed route (ASR) is recorded.

Survey Dimensions do not procure statutory or private source utility information as part of its detection service nor does it record any such information in a utility survey unless otherwise noted. Statutory plans should be consulted to supplement this survey.

Vertical & Horizontal Position - Vertical position (depth) is indicative to the top of the utility feature and is recorded as depth to top of service and should not be taken as exact. Where depth information from the technology is unclear, depth is not shown. Drains may have been detected using threading and the depth indicated could be between the top and the bottom of the drain. Horizontal position is indicative to the centre of the utility feature and should not be taken as exact.

Warranty - Biodegradable paints are used to mark-out the position of the utilities. Before long paint markings may become illegible depending on ground, weather and traffic conditions. No warranty is given in respect of the durability of the paint markings and that they are a complete representation of the sub-surface utilities therefore this drawing should be used as the primary reference for the survey results.

This drawing does not provide an absolute representation of the sub-surface. Utilities have been detected using non-invasive technologies only and the performance can be adversely affected by ground, weather and site conditions outside of our control therefore some utilities may be undetectable. While we use reasonable endeavours to detect all utilities it does not warrant that 100% detection will be achieved and that approximate depth penetration of the technologies will be greater than two metres.

Sewer and manhole details shown on this drawing have been obtained by observation and measurement from the surface and as such cannot be guaranteed. Where precise sewer details will be critical to the project design we would recommend that entry into the chamber be undertaken using a specialist team, appropriately qualified for confined space entry. These teams can be supplied on request.

Irrespective of the information provided by a utility survey and statutory plans, excavation work should be undertaken with extreme caution and in accordance with HSE Guidelines - HSG47 Avoiding Danger from Underground Services.

Sheet 01

SHEET LAYOUT

Rev	Description	Drawn/Chk	Date

Survey Dimensions Ltd
Measured surveys of land and buildings

01726 390 010
+44 (0) 7970 205 932
+44 (0) 7970 205 935
info@SurveyDimensions.co.uk
www.SurveyDimensions.co.uk

Project Title:
**42 Fore Street
Bugle
St.Austell
PL26 8PE**

Client:
Ben Evans

Drawing Title:
Second Floor Plan

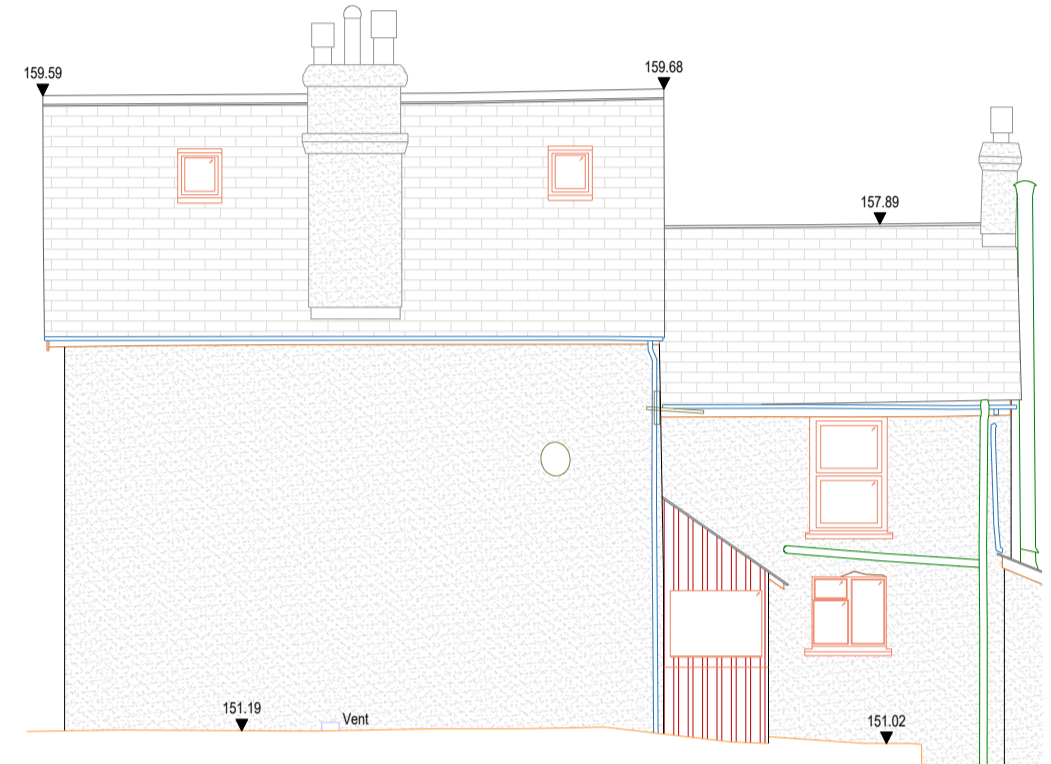
Scale: 1 : 50 @ A1	Drawn: MWS
Date: 16-02-2022	Checked: PW
Drawing Status: SURVEY	Surveyor: KC

Project Ref:	220116	Dwg No:	04	Rev:	
--------------	--------	---------	----	------	--

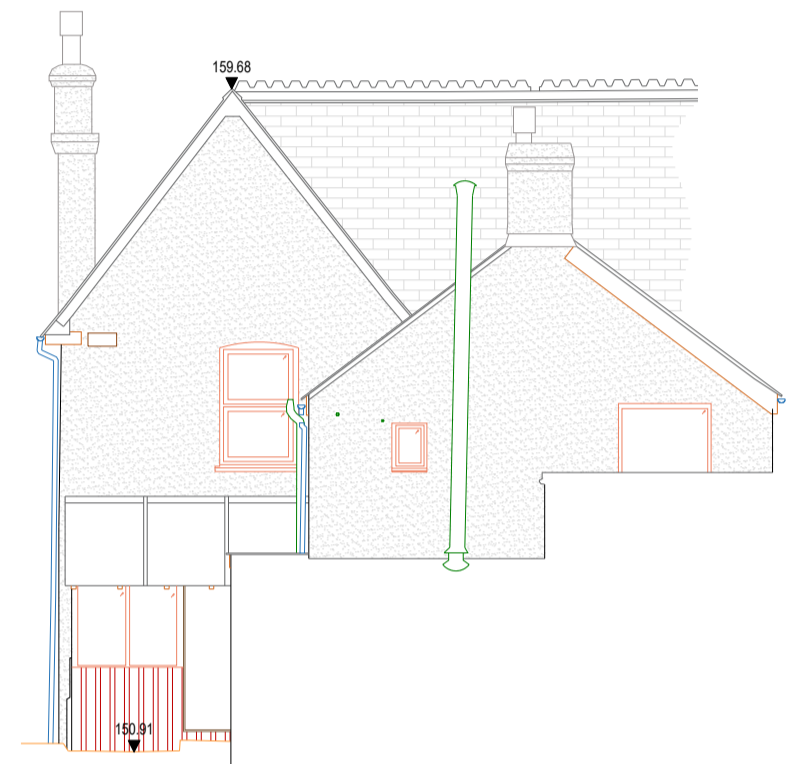
THIS DRAWING IS COPYRIGHT. Contractors and Consultants must check all dimensions on site. Only figured dimensions are to be used. This drawing shall be used only for the purpose intended.



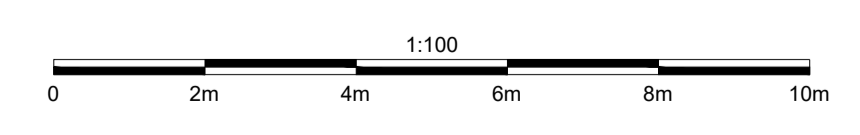
Datum: 140.00m
Front Elevation



Datum: 140.00m
Side Elevation



Datum: 140.00m
Rear Elevation



LEGEND			
Blue Vacuum	BT	Gas	—G—
Cable Television	CTV	Heating Pipe	—HP—
Cable TV	CTV	Hot Cable	—HC—
Compressors	C	Multiple Services Route	—MSR—
Change	CH	Drain	—D—
Change - Combined Water	CW	Drain	—D—
Change - Fuel Water	FW	Street Lighting	—SL—
Change - Storm Water	SW	Traffic Signal Loop	—TSL—
Empty Duct	ED	Unknown	—U—
Electric	E	Unknown Cable	—UC—
Fire Protection	FP	Unknown Pipe/Line	—UPL—
Fibre Optic	FO	Water	—W—
Full	F		
Assumed Service Route - See GENERAL NOTES (Using abbreviation of service and colour as above)	ASR	ASR-XXX	ASR-XXX
UTILITY SURVEY INFORMATION			
Location by Ground Penetrating Radar	GPR	Unable to Survey	UTS
Area of Concern	ADC	Unable to LB (Lower)	ULB
Confirmed Survey Area	CSA	Unable to Trace	UT
Possible Survey Area	PSA	Unable to Trace (due to blockage)	UTB
Depth to Top of Service (metres)	GT (BSC)	Unable to Trace Further	UTF
ABBREVIATIONS used on a PAS 128 Survey			
GT (BSC) Depth in metres, BSC = Quality Level, P = Post processed GPR			
TOPOGRAPHIC UTILITY DETAILS			
Barrel (symbol - road)	BR	Post	PO
Bullseye Beacon	BB	Rain Water Pipe	RWP
Subsoil	S	Road Edge	RE
Borehole	B	Roadside Eye	RE
Flash Beacons IC	BT IC	Sign Post	SP
Building (non-survey detail)	B	Spot Light	SL
Cable Hoop Ground	CHG	Spot Height	SH
Cable TV Box	CTV	Stop Valve	SV
CCTV Camera	CC	Survey Station	SS
Cover Level in metres	CL 50.00	Telephone Pole	TP
Direction of Flow (Drainage)	DF	Traffic Light	TL
Distribution Board	DB	Tree	T
Earth Rod	ER	Unknown Valve	UV
Electric Cabinet	EC	Wall	W
Electric Pole	EP	Wall Pipe	WP
Electric Sign	ES	Water Pipe	WP
Embankment	E	Water Meter	WM
Facade Flare	FF	Water Valve	WV
Flag Post	FP	Water Valve	WV
Flag Pole	FP	Water Valve	WV
Flood Light	FL		
Gas Valve	GV		
Gate	G		
Ground Level in metres	GL 50.00		
Gully	G		
Inspection Cover	IC	Building Canopy	BC
Invert Level in metres	IL 50.00	Cash Barrier	CB
Junction Box - BT	JB BT	Damage Channel	DC
Junction Box - Comm	JB COM	Drop Kerb (level in metres)	DK (L)
Junction Box - Elec	JB E	Edge Detail (level in metres)	ED (L)
Lamp Post	LP	Frogman (level in metres)	FM (L)
Light Bollard	LB	Fence	F
Light in ground	LIG	Heard Face	H
Mantle	M	Kerb channel (level in metres)	KC (L)
Manhole Capped Post	MCP	Kerb top (level in metres)	KT (L)
Pipe Chamber in metres	PC (L)	Overhead Service Line	OSL
Pipe into Ground	P	Pedestrian Crossing	PC

General Notes

Utilities may continue outside of the survey area. Any point marks outside of the area are for investigative purposes only and may not represent the full extent of the sub-surface utilities.

Only sub-surface utility information is provided. Above ground utility information may be shown where it assists with positional referencing.

Where lgic indicates a utility exists but which cannot be positively confirmed with the technology, an assumed route (ASR) is recorded.

Survey Dimensions do not procure statutory or private source utility information as part of its detection service nor does it record any such information in a utility survey unless otherwise noted. Statutory plans should be consulted to supplement this survey.

Vertical & Horizontal Position - Vertical position (depth) is indicative to the top of the utility feature and is recorded as depth to top of service and should not be taken as exact. Where depth information from the technology is unclear, depth is not shown. Drains may have been detected using threading and the depth indicated could be between the top and the bottom of the drain. Horizontal position is indicative to the centre of the utility feature and should not be taken as exact.

Warranty - Biodegradable paints are used to mark out the position of the utilities. Before long paint markings may become illegible depending on ground, weather and traffic conditions. No warranty is given in respect of the durability of the paint markings and that they are a complete representation of the sub-surface utilities therefore this drawing should be used as the primary reference for the survey results.

This drawing does not provide an absolute representation of the sub-surface. Utilities have been detected using non-invasive technologies only and the performance can be adversely affected by ground, weather and site conditions outside of our control therefore some utilities may be undetectable. While we use reasonable endeavours to detect all utilities it does not warrant that 100% detection will be achieved and that approximate depth penetration of the technologies will be greater than two metres.

Sewer and manhole details shown on this drawing have been obtained by observation and measurement from the surface and as such cannot be guaranteed. Where precise sewer details will be critical to the project design we would recommend that entry into the chamber be undertaken using a specialist team, appropriately qualified for confined space entry. These teams can be supplied on request.

Irrespective of the information provided by a utility survey and statutory plans, excavation work should be undertaken with extreme caution and in accordance with HSE Guidelines - HSG67 Avoiding Danger from Underground Services

Sheet 01

SHEET LAYOUT

Rev	Description	Drawn/Chk.	Date

Survey Dimensions Ltd
Measured surveys of land and buildings

01726 390 010
+44 (0) 7970 205 932
+44 (0) 7970 205 935
info@SurveyDimensions.co.uk
www.SurveyDimensions.co.uk

Project Title:
**42 Fore Street
Bugle
St.Austell
PL26 8PE**

Client:
Ben Evans

Drawing Title:
Elevations

Scale: 1:100 @ A1	Drawn: MWS
Date: 16-02-2022	Checked: PW
Drawing Status: SURVEY	Surveyor: KC
Project Ref: 220116	Draw No: 05

THIS DRAWING IS COPYRIGHT. Contractors and Consultants must check all dimensions on site. Only figured dimensions are to be used. This drawing shall be used only for the purpose intended.