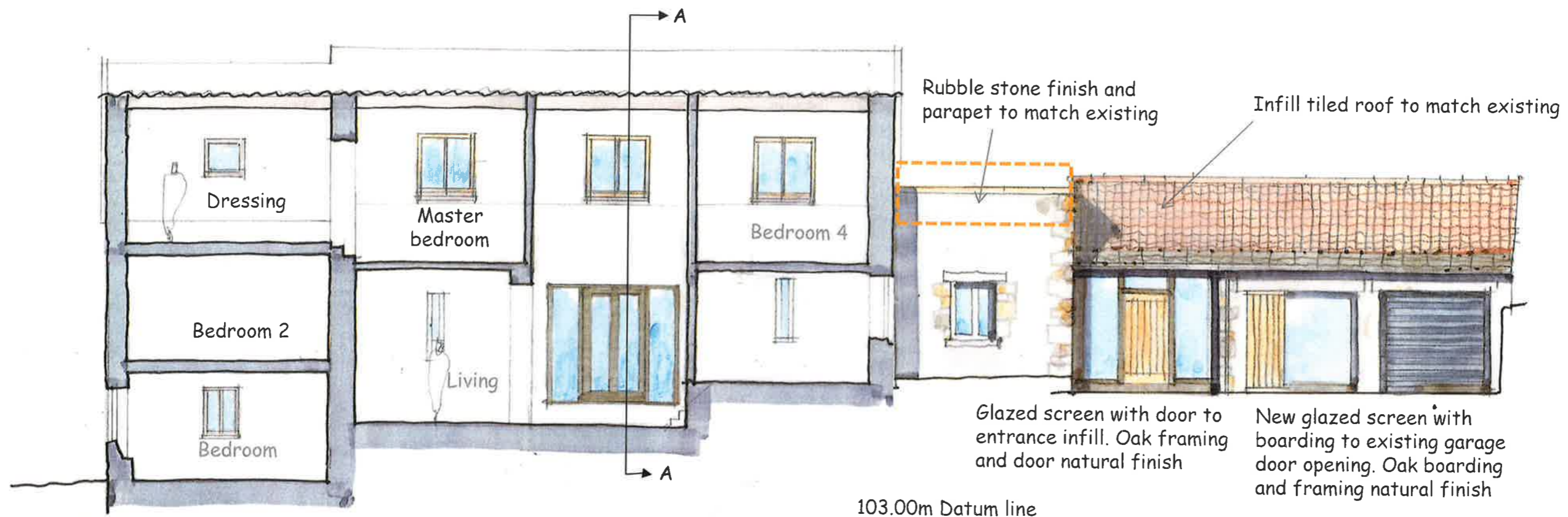


Do not scale this drawing for other than Planning purposes

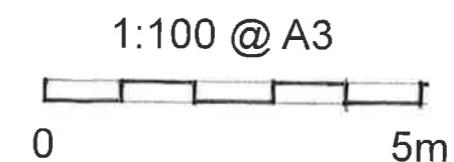
Note: Proposals based on preliminary survey. It is recommended that a full measured survey is carried out prior to detail design.

NOT for CONSTRUCTION

© Biddulph Architects Ltd



Proposed alterations Hayes Manor barn, Viney Hill, Glos GL15 4LY



Dwg. No.
HM/PL/16

BIDDULPH
ARCHITECTS Ltd