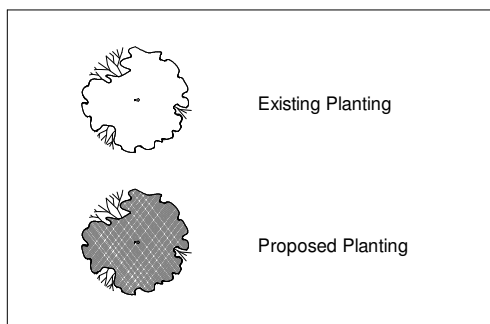


Key

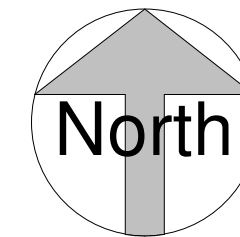


Lighting

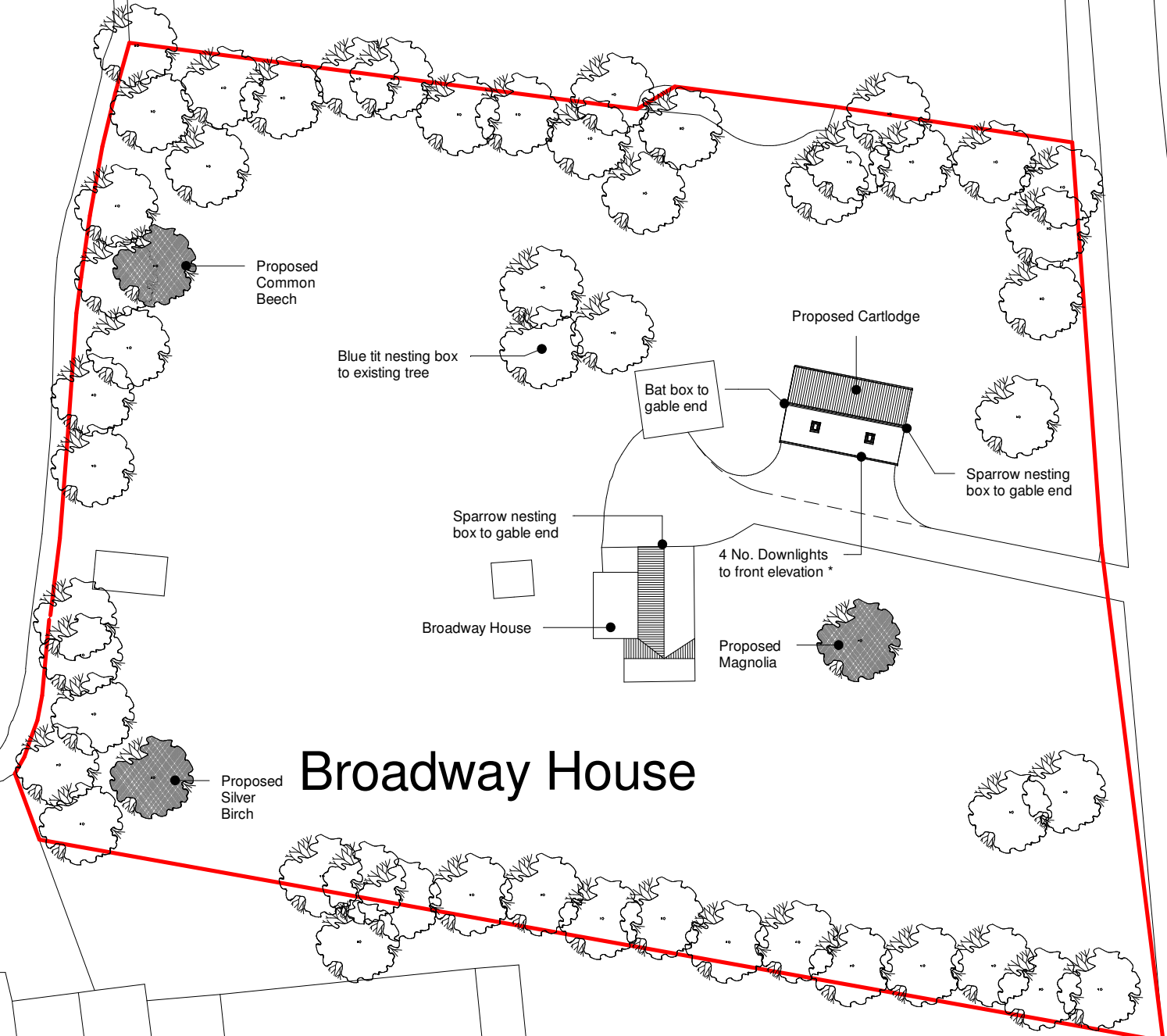
\* To ensure that impacts on commuting/foraging bats from permanent lighting are minimised as much as possible, we will direct lighting to where it is needed and avoid light spillage. (exclusively in front of the cartlodge) This will be achieved through the design of the low luminaire and the use of a shield, which will help direct the light to the intended area only.

For the security lights to the front elevation, we will employ a movement sensor to significantly reduce the amount of time the light remains on each night. We will also ensure that the light unit and the movement sensor can be separately aimed for better efficiency. we will adjust them to the minimum setting to reduce the amount of time they stay illuminated.

To limit the impact on bats and other wildlife, we will carefully aim the light to illuminate only the immediate area required, using a sharp downward angle. Shields will be used to control or restrict the area to be lit. We will consciously avoid illuminating at wider angles, as we recognise that this can disturb foraging and commuting bats, as well as other wildlife. Our aim is to create a lighting setup that is considerate of the natural habitats and behaviours of these species while meeting our needs for illumination.



The Cottage



Broadway House

Client

Mike and Cheryl Turner

Project

Broadway House, Broad Road, Bacton, Stowmarket, IP14 4HP

Title

Lighting & Ecological enhancement plan

Project N<sup>o</sup> Drawing N<sup>o</sup> Revision

**0182 -0110** **P02**

Scale - unless otherwise stated Issued For

1 : 500 @ A3 PRELIMINARY

**SUFFOLK  
CARTLODGES**

WILLOWOOD BARN, MIDDLEWOOD GREEN  
SUFFOLK, IP14 5HF - 07941317151

www.suffolcartlodges.com