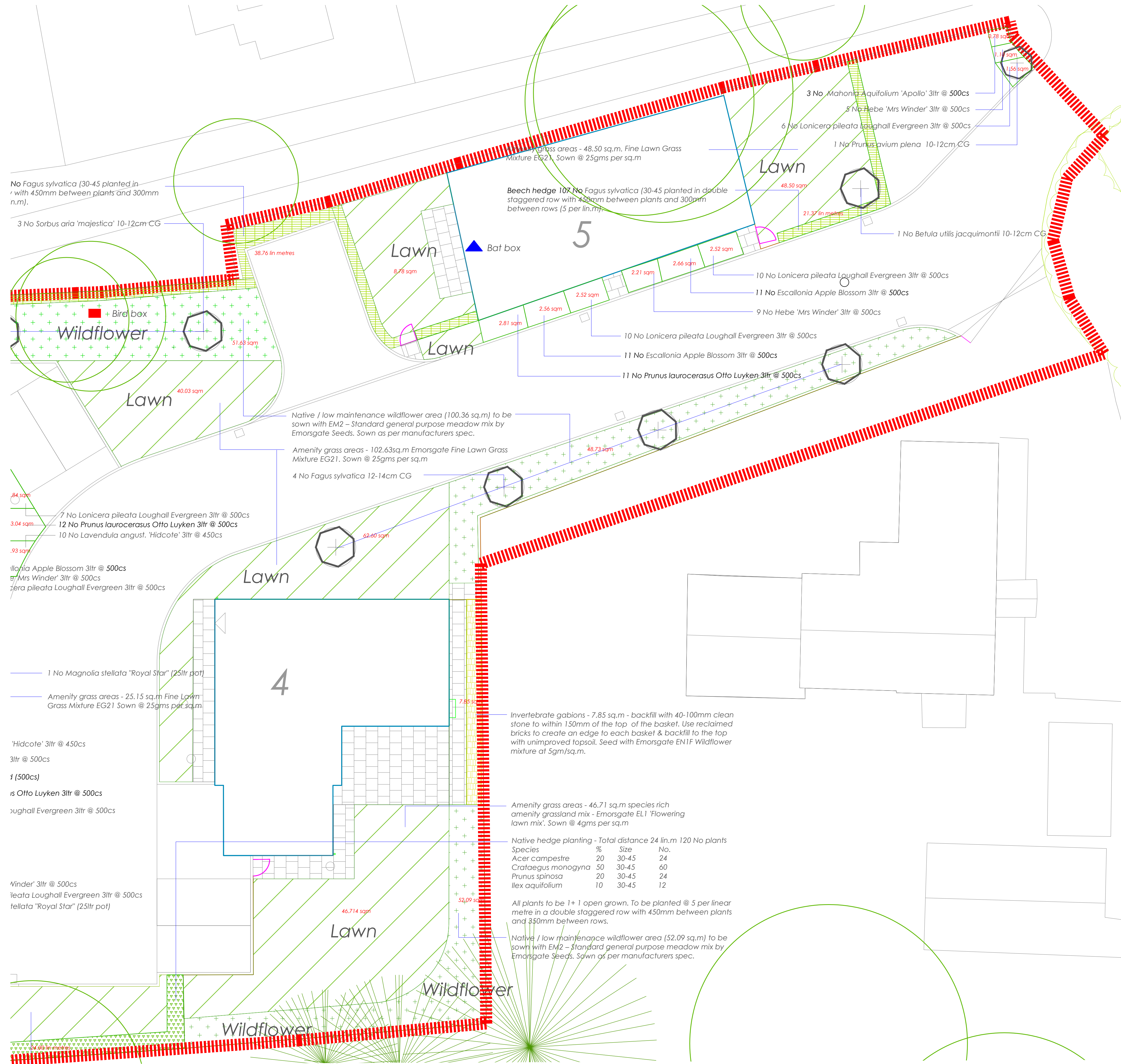


legend

-  Site boundary
-  Proposed building
-  Existing trees - retained
-  Standard trees
-  Informal shrub mix
-  Amenity shrubs
-  Native hedging
-  Beech hedging
-  Native woodland
-  Wildflower areas
-  Amenity grass
-  Invertebrate gabions
-  Area measure
-  Bird box
-  Bat box



Outline implementation specification

TOPSOIL: All plant areas to have 300mm min good quality topsoil - must comply with BS3882: 2015. Multi-purpose grade and ameliorated as necessary to comply with this standard. Subsoil should comply with the requirements of BS8601, 2013 Multi-purpose grade. Remove all stones and debris before planting.

AMENITY GRASS AREAS: Ensure 150mm good quality topsoil. Remove all stones and debris. Cultivate and create fine filth. Ideally leave for 3 weeks and remove any arising weeds. Sow in line with suppliers recommendations / specified rate.

LOW MAINTENANCE / WILDFLOWER SEED AREAS: Ensure these areas have no topsoil. Cultivate subsoil, remove all stones and debris and create fine filth. Ideally leave for 3 weeks, treat arising weeds & recultivate if necessary. Sow in line with suppliers recommendations / specified rate. Use 'carrier' such as silver sand if needed. Roll or gently rake.

GRASS CUTTING / AMENITY AREAS: when grass reaches 65mm high, 'top' the whole area leave 38mm of growth. Repeat thereafter to keep grass at 38mm. Remove arising.

GRASS CUTTING / LOW MAINTENANCE AREAS: No cutting in year 1.

PREPARATION OF PLANTING BEDS: Apply approved contact herbicide to eradicate any weed growth. Do not commence cultivation until dieback is complete.

CULTIVATION: Break up compacted ground to full depth of topsoil. DO NOT turn up subsoil. Cultivate by approved mechanical means and / or by hand and reduce to a filth. Remove all stones and clay balls exceeding 50mm dia, weeds, roots of perennial weeds, tufts of grass and any other foreign matter.

CONDITIONER / COMPOST: Spread conditioner evenly over all planting areas at 10 litres/m² and spread 25mm depth approved Spent Mushroom Compost evenly over all planting areas and work into topsoil during cultivations.

WATER STORING POLYMER: Spread evenly over all planting areas at a rate of 100gms/m² and work into topsoil during cultivations.

MANUFACTURERS RECOMMENDATIONS: To be strictly followed for storage, handling and application of herbicides and all other chemicals. Remove containers from site.

TREE PITS: In accordance with BS8545, 2014 - Trees from nursery to independence in the landscape - free pits should be excavated to a depth no greater than the receiving root-ball depth. Break up bottom of pits to a minimum depth of 300mm and roughen sides. Ensure that pits are free draining and install land drain if required - 100mm diameter PVC perforated pipe). Excavated topsoil to be mixed thoroughly with the following (bulk up with additional topsoil as required).

IRRIGATION TUBING: For selected standard trees (and bigger), install 50mm dia irrigation tubing to each tree.

TREES, SHRUBS & OTHER PLANTS: All plants to comply with the relevant BS and be obtained from approved source(s). They will be good, well-formed, healthy specimens, free from disease and damage to stem, branches, roots and foliage and have a vigorous root system with a reasonable proportion of fine fibrous rootlets. Comply with Code of Practice for Plant Handling, during lifting, packaging, transportation to site and while on site until final planting. All whips and transplants to have free guards / spiral guards.

DELIVERY OF PLANTS: Carefully lift, pack and protect plant material to survive transport to site without damage. Carefully prune any roots, branches or shoots that are slightly damaged. Damaged plants will be rejected.

SUITABLE PLANTING CONDITIONS: will be taken to mean mild and damp weather when the ground is moist and workable. Do not plant in persistent cold or drying winds or if the soil is frost bound, waterlogged or excessively dry.

TEMPORARY STORAGE ON SITE: Where planting must be delayed plants to be thoroughly heeled-in topsoil or a suitable moisture retentive medium. All plant bundles to be opened and plants loosely distributed within the medium. Container grown plants to be stood closely together, upright, on well drained, weed free ground. Adequately support all trees and other large stock. Water plants as necessary to prevent drying out.

PLANTING TREES: Upright and in the centre of the pit, of the same depth and in the same direction to the prevailing winds as when grown in the nursery. **Bare root trees** - place backfilling material in 150 - 250mm layers, shaking tree to ensure close contact with fully spread roots and elimination of air pockets. Firm the soil as backfilling proceeds taking care not to damage any roots. **Container grown trees** - firm backfilling material around root ball in 150mm layers taking care not to disturb roots. Prune broken or damaged branches. Water thoroughly immediately after backfilling.

STAKES FOR TREES: Pressure impregnated SW (pat creosote or tar), round, straight, peeled, free from projections and pointed at one end. Use a single short stake per tree for 10-12cm with stake at 45 degrees and two stakes with cross bar for larger trees. Tie with appropriate tree tie.

PLANTING GENERALLY: Set out plants evenly spaced and in an informal manner avoiding straight line. Plant upright or well balanced with best side to the front. Carefully return excavated topsoil, packing around evenly spread roots or root ball and heel well in. Finished soil level to be at original soil mark on plants and 30mm above surrounding level to allow for settlement. Immediately after planting carefully cut back any damaged, dead or diseased branches and remove any weak, thin, or malformed growth. Where specified cut back species to encourage growth. After planting fork or rake soil to a fine filth. Water plants thoroughly immediately after planting.

CUTTING BACK: Native shrub and hedge mix plants to be cut back by 1/3 at time of planting to encourage bushiness.

HEDGING FORMATIVE PRUNE: at the time of planting, cut to uniform height / formative prune to assist longer term shape.

BIODEGRADABLE RABBIT GUARDS: the contractor shall include for the supply and installation of a biodegradable plastic spiral rabbit guard to each whip / transplant. This is to include a bamboo cane where necessary. Tree species within these mixes to have a 1.2m tall guard with stout stake. Square guards can be sourced from gt GreenGuard Biodegradable Tree Shelter Guard product code: 160ps1002. Spiral guards can be sourced from Rainbow Treebio Biodegradable Spiral Guard product code: 160PS1031-PRO. The specified rabbit guards must be fitted at close of each day's planting. Maintenance operations must include for removing all weed growth from inside these guards.

SHRUBS: Excavate planting holes 150mm wider & deeper than root spread and plant to the correct depth.

BARK MULCH: After watering spread 50mm of softwood bark mulch over all planting areas. Nominal particle size shall be 5 - 75mm with no more than 15% below 10mm.

MAINTENANCE: To include watering, cutting, firming, adjusting stakes/ties/guards, applying approved chemicals, keeping plant beds clear of weeds, and removal of all rubbish. Include formative pruning of hedge planting. Adjacent roadways and pavements should be kept clear of bark mulch and soil. Maintain all planted areas for 12 months from date of practical completion unless specified otherwise. The defects liability period will also run concurrently for 12 months from the date of practical completion.

landscape architecture

potterton

associates ltd

9 silverdale avenue worcester wr5 1py

design.potterton@gmail.com www.pottertonassociates.com

client
County to County
project
Manor Lane, Swindon, Cheltenham
drawing title
Landscape proposals -
sheet 1 of 2
job no. date drawn by
955 Feb 2023 CP
drg. no. scale revision
P 01 1:100 B 12.07.23 CP