

# 7.0 Design Proposal

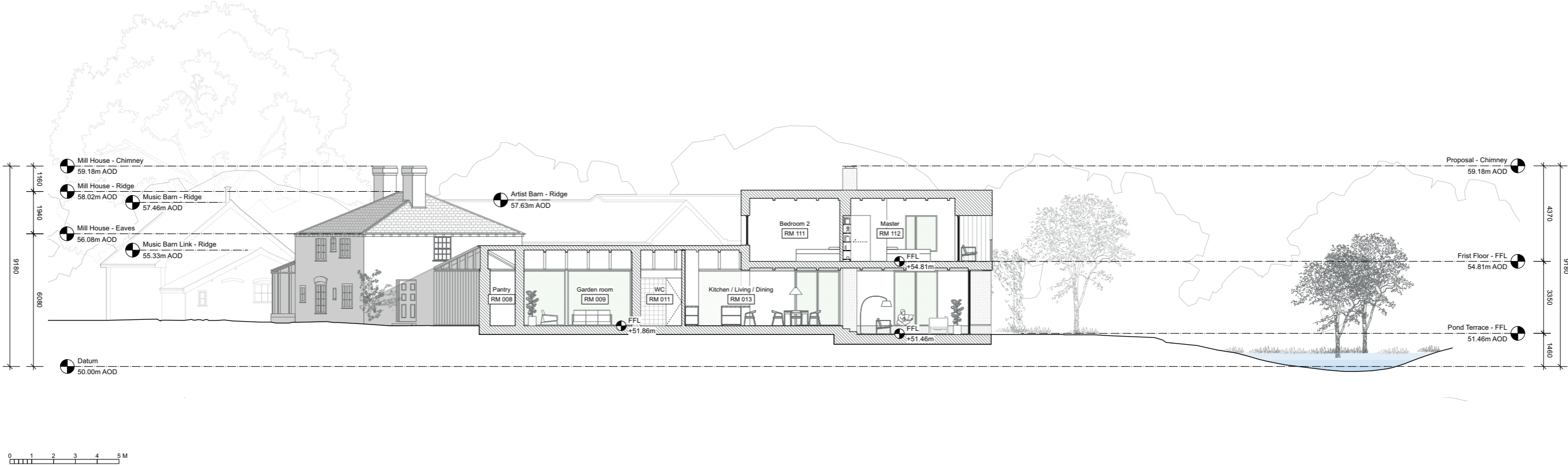
## 7.16 Elevations as Proposed



Above: Proposal elevations (@1:200)

7.0 Design Proposal

7.17 Section as Proposed



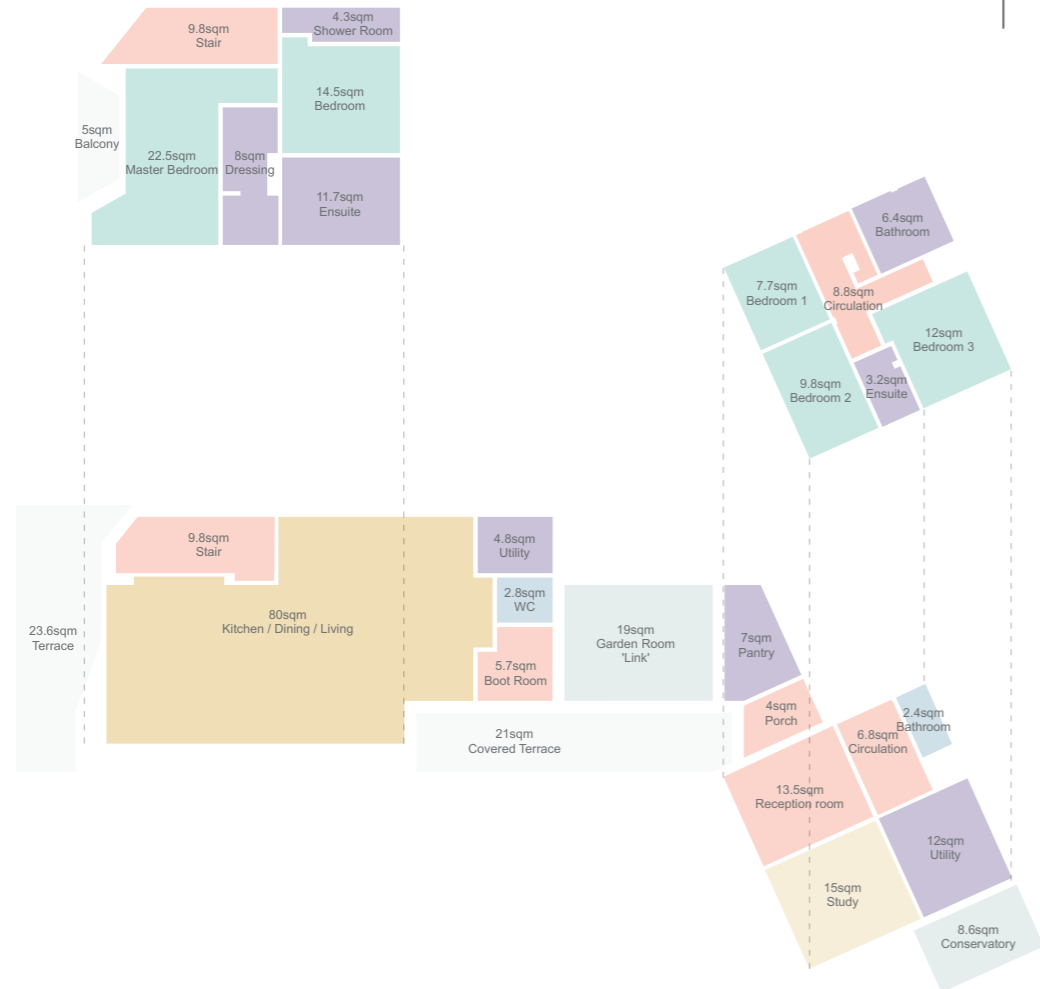
Above: Proposal section (@1:200)

# 7.0 Design Proposal

## 7.18 Areas Summary

Below is a summary of the existing and proposed site areas, and proposed accommodation areas.

	Mill House GIA			Self-Build Extension GIA			Historic Outbuildings	Current Outbuildings	Combined Existing Mill House + Extension GIA		
	Ground	First	Mill House Total (Ground + First)	Ground	First	Proposal Total (Ground + First)	Total GIA	Total GIA	Ground Floor Site GIA	First Floor Site GIA	Total Site GIA
<b>Historic</b>	130 m <sup>2</sup>	121 m <sup>2</sup>	251 m <sup>2</sup>				114 m <sup>2</sup>	227 m <sup>2</sup>	471 m <sup>2</sup>	121 m <sup>2</sup>	<b>592 m<sup>2</sup></b>
<b>Existing</b>	130 m <sup>2</sup>	121 m <sup>2</sup>	251 m <sup>2</sup>					227 m <sup>2</sup>	357 m <sup>2</sup>	121 m <sup>2</sup>	<b>478 m<sup>2</sup></b>
<b>Proposal</b>	54 m <sup>2</sup>	53 m <sup>2</sup>	107 m <sup>2</sup>	147 m <sup>2</sup>	75 m <sup>2</sup>	222 m <sup>2</sup>		227 m <sup>2</sup>	428 m <sup>2</sup>	128 m <sup>2</sup>	<b>556 m<sup>2</sup></b>
<b>Site Area Net Gain on Existing Site: 78 m<sup>2</sup></b>											
<b>Site Area Net Loss on Historic Site: -36 m<sup>2</sup></b>											



Above: Proposal area analysis

### Proposed House Accommodation

Location	Room no.	Ground Floor	Location	Room no.	First Floor		
Mill House	RM 001	Reception room	14 m <sup>2</sup>	Mill House	RM 101	Circulation	9 m <sup>2</sup>
Mill House	RM 002	Circulation	7 m <sup>2</sup>	Mill House	RM 102	Bathroom	6 m <sup>2</sup>
Mill House	RM 003	Bathroom	2 m <sup>2</sup>	Mill House	RM 103	Bedroom 1	8 m <sup>2</sup>
Mill House	RM 004	Study	15 m <sup>2</sup>	Mill House	RM 104	Bedroom 2	10 m <sup>2</sup>
Mill House	RM 005	Utility	12 m <sup>2</sup>	Mill House	RM 105	Bedroom 3	12 m <sup>2</sup>
Mill House	RM 006	Conservatory	9 m <sup>2</sup>	Mill House	RM 106	Ensuite	3 m <sup>2</sup>
Extension	RM 007	Porch	4 m <sup>2</sup>	Extension	RM 109	Circulation	10 m <sup>2</sup>
Extension	RM 008	Pantry	7 m <sup>2</sup>	Extension	RM 110	Bathroom	4 m <sup>2</sup>
Extension	RM 009	Garden room	19 m <sup>2</sup>	Extension	RM 111	Bedroom 2	15 m <sup>2</sup>
Extension	RM 010	Boot room	6 m <sup>2</sup>	Extension	RM 112	Master bedroom	23 m <sup>2</sup>
Extension	RM 011	WC	3 m <sup>2</sup>	Extension	RM 113	Dressing room	8 m <sup>2</sup>
Extension	RM 012	Utility	5 m <sup>2</sup>	Extension	RM 114	Ensuite	12 m <sup>2</sup>
Extension	RM 013	Kitchen / Living / Dining	80 m <sup>2</sup>	External		Master Balcony	5 m <sup>2</sup>
Extension	RM 014	Circulation	10 m <sup>2</sup>	<b>Total (not including external)</b>			119 m <sup>2</sup>
External		Covered terrace	21 m <sup>2</sup>				
External		Pond terrace	24 m <sup>2</sup>				
<b>Total (not including external)</b>			191 m <sup>2</sup>				

7.0 Design Proposal

7.19 External view from the pond



Right: External visualisation by David Schnabel

7.0 Design Proposal

7.20 External view from the site approach



*Right:* External visualisation by David Schnabel

## 7.0 Design Proposal

7.21 Internal view of Dining / Living room, looking towards the pond beyond



*Right:* Internal visualisation by David Schnabel

## 8.0 Conclusion

### 8.1 Mill House Design Summary

David Nicholson and Ruth Hawkins purchased the Mill House site in 2003, and have carefully looked after and restored the site over the years. They are now looking to restore the site to make it appropriate for 21st century living as a home for the two of them, with space to host their extended family. The design of the new house takes advantage of the site's unique views and vantage points, forms spaces that are filled with light, are open-plan, flexible, and more suitable for the family's current and future needs.

The proposals reflect the client and design team's aspirations to deliver a highly sustainable new home, that is sensitive and respectful to the natural setting, as well as responsive to existing and future environmental challenges. The energy strategy for the scheme focuses on the efficiency of the fabric in the first instance, so that the energy demand is reduced to the extent feasible. The scheme creates an ambitious home with sustainability at its core suitable for use in the 21st century.



# IF\_DO

Unit A215 The Biscuit Factory  
100 Drummond Road  
London SE16 4DU

+44 (0)20 3645 6789  
[www.ifdo.co](http://www.ifdo.co)  
[info@ifdo.co](mailto:info@ifdo.co)

@IF\_DO 2022