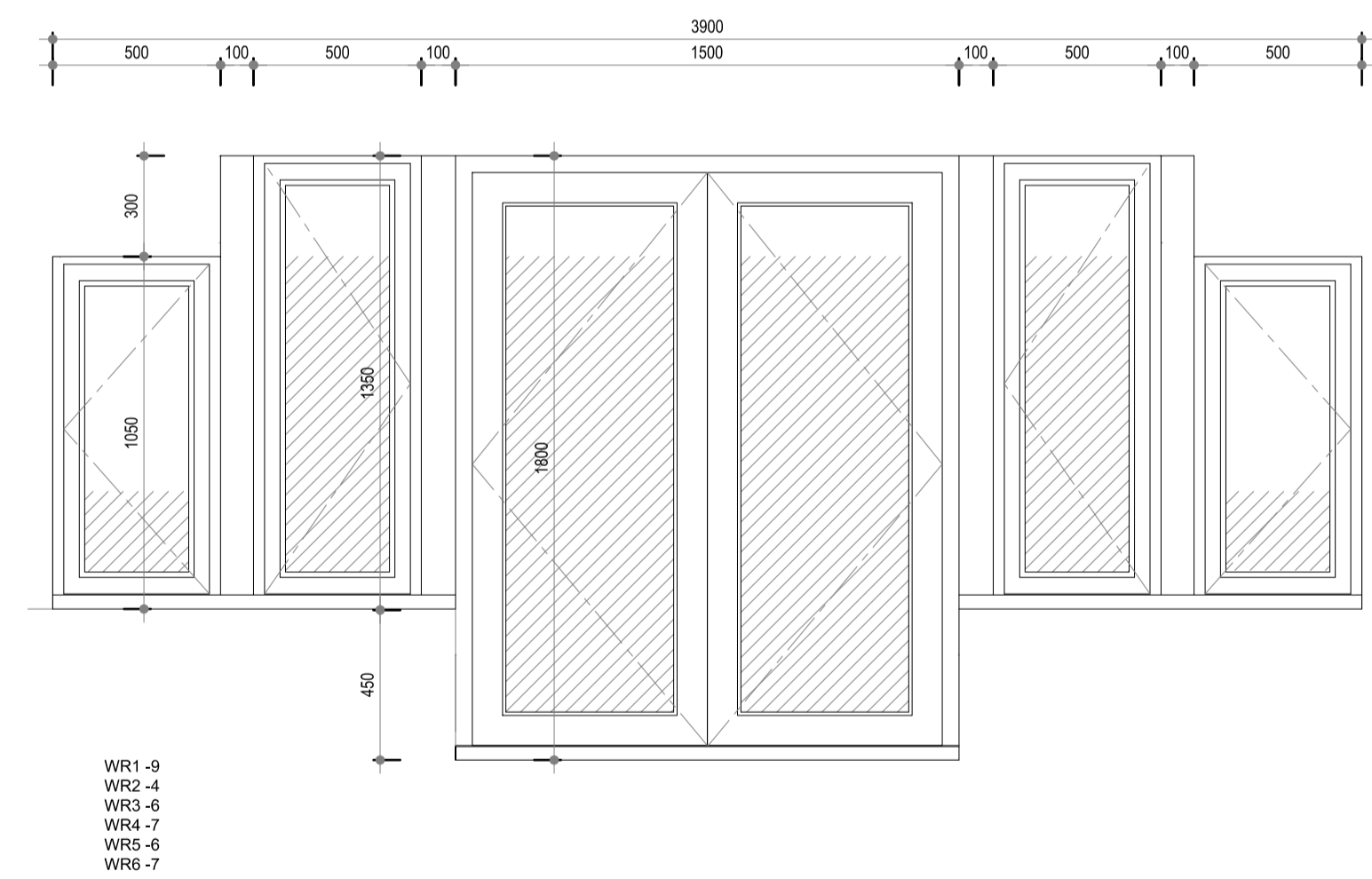
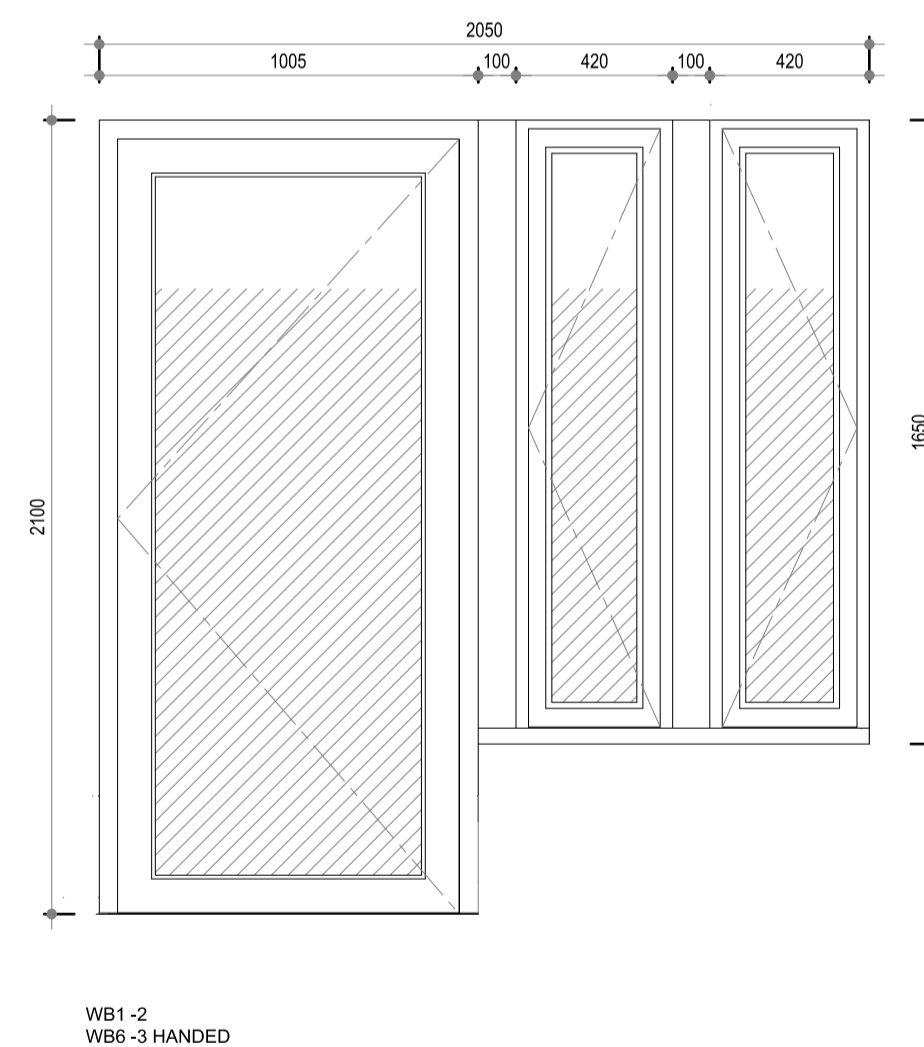
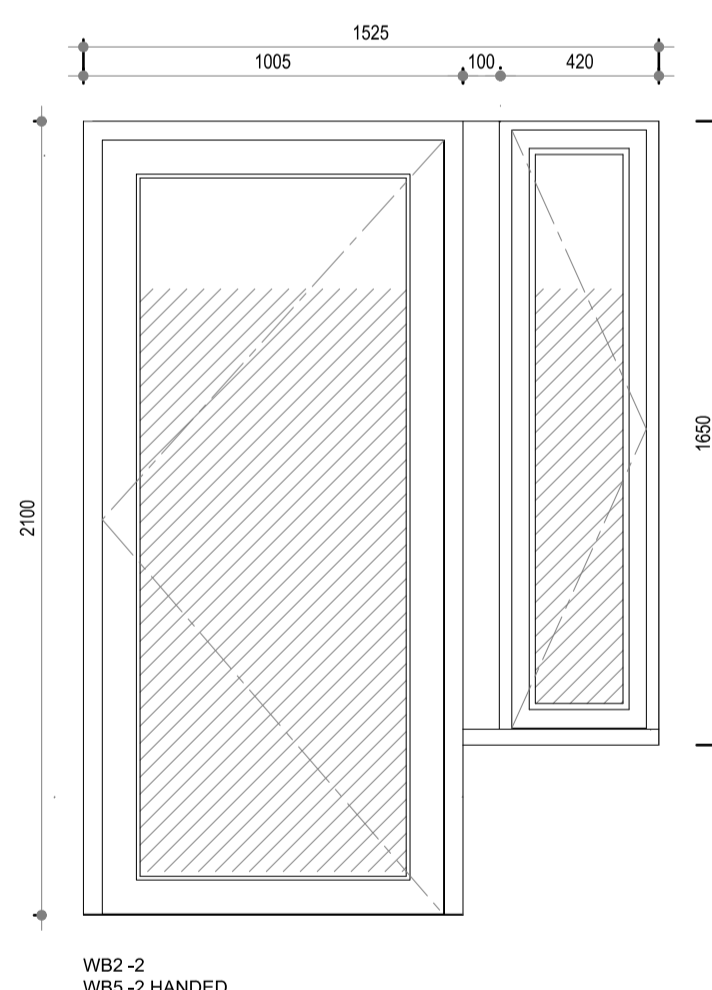
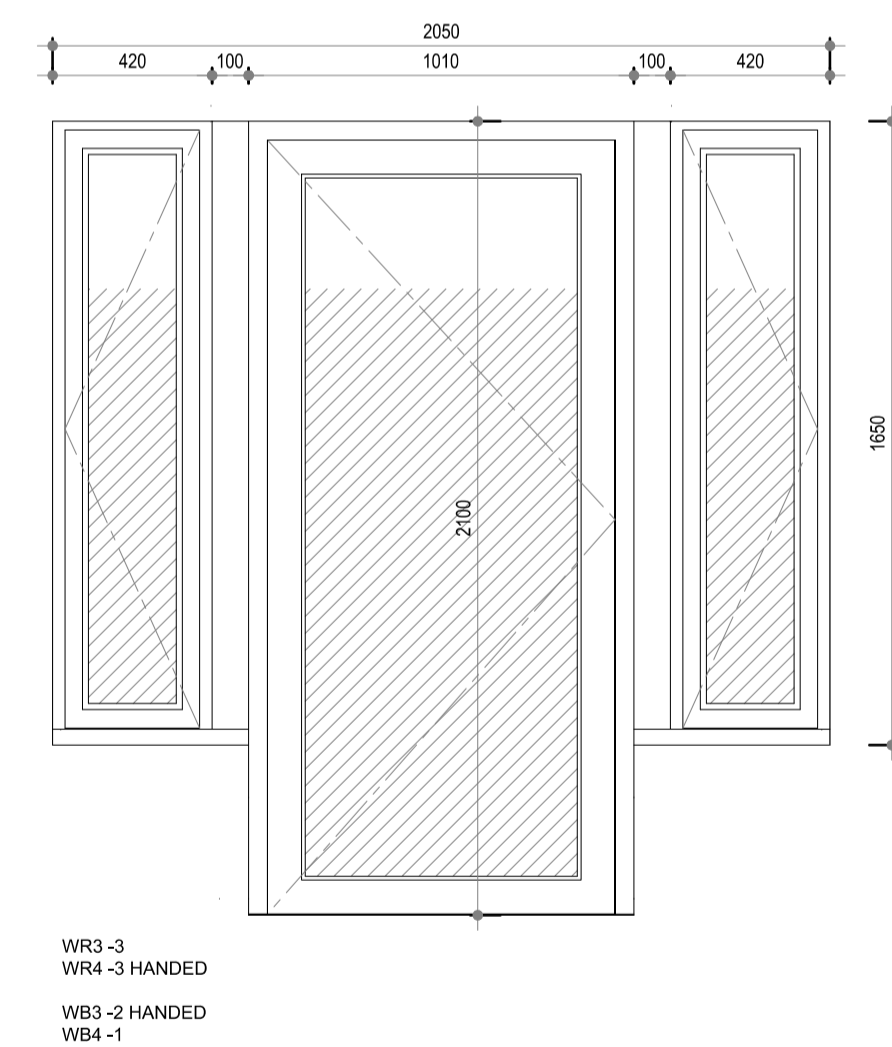
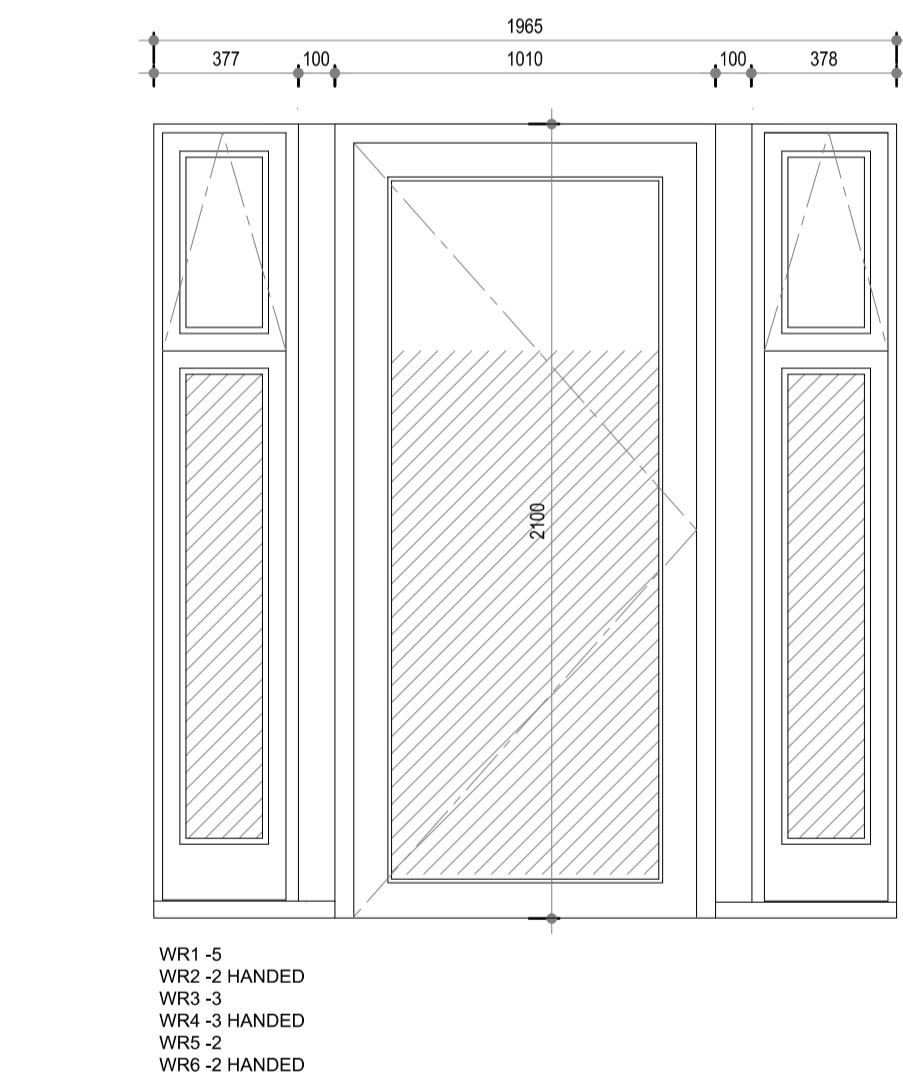
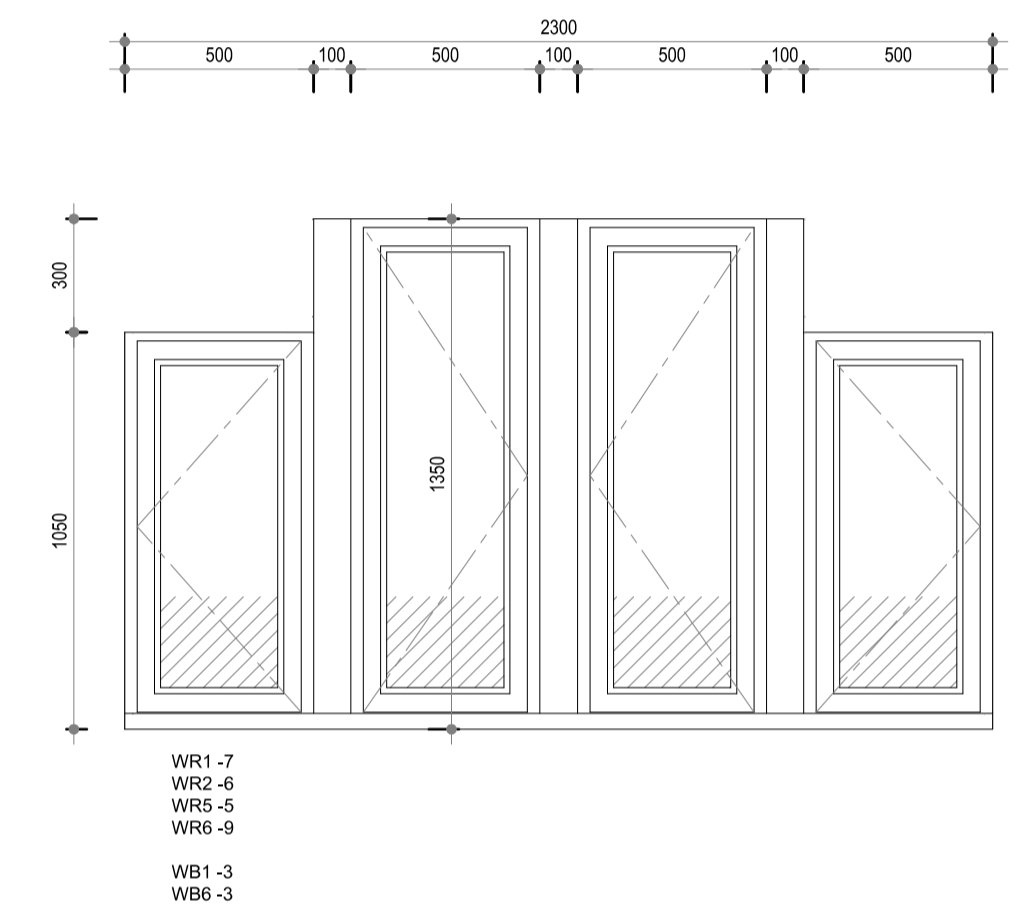
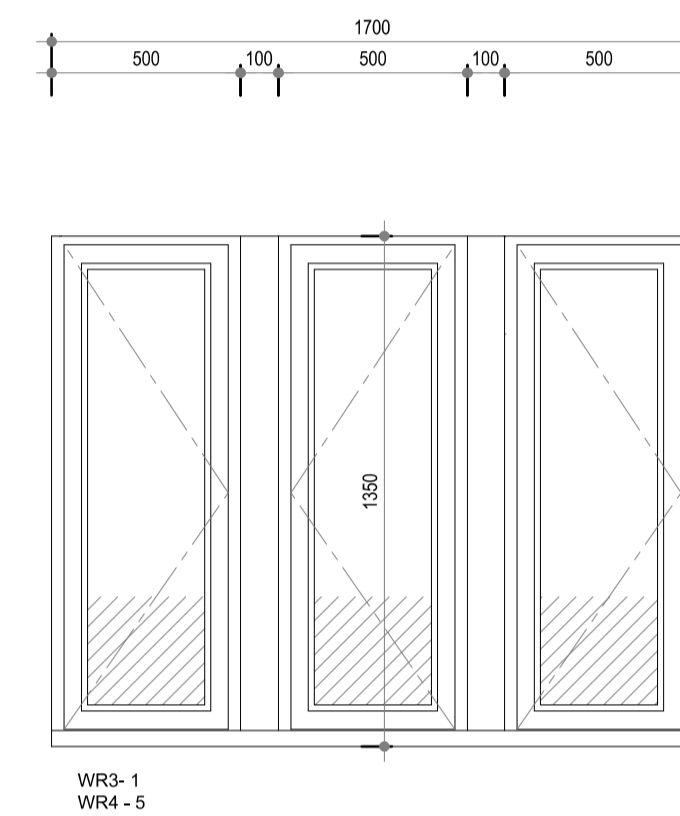
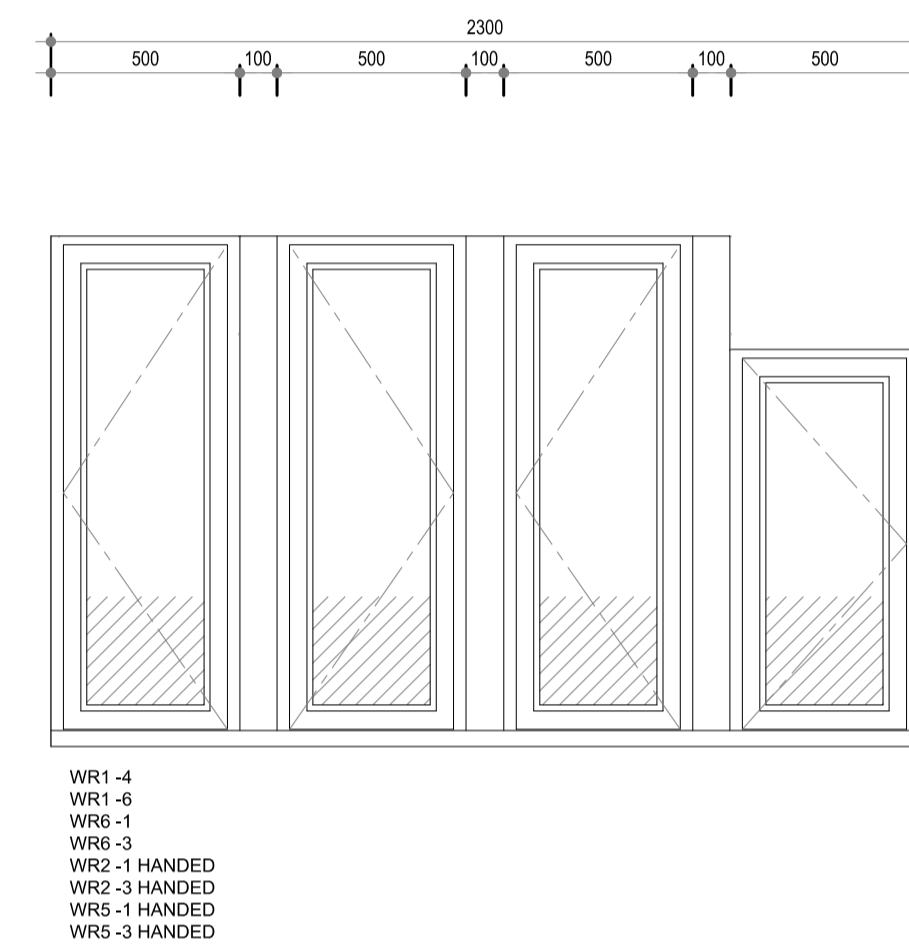
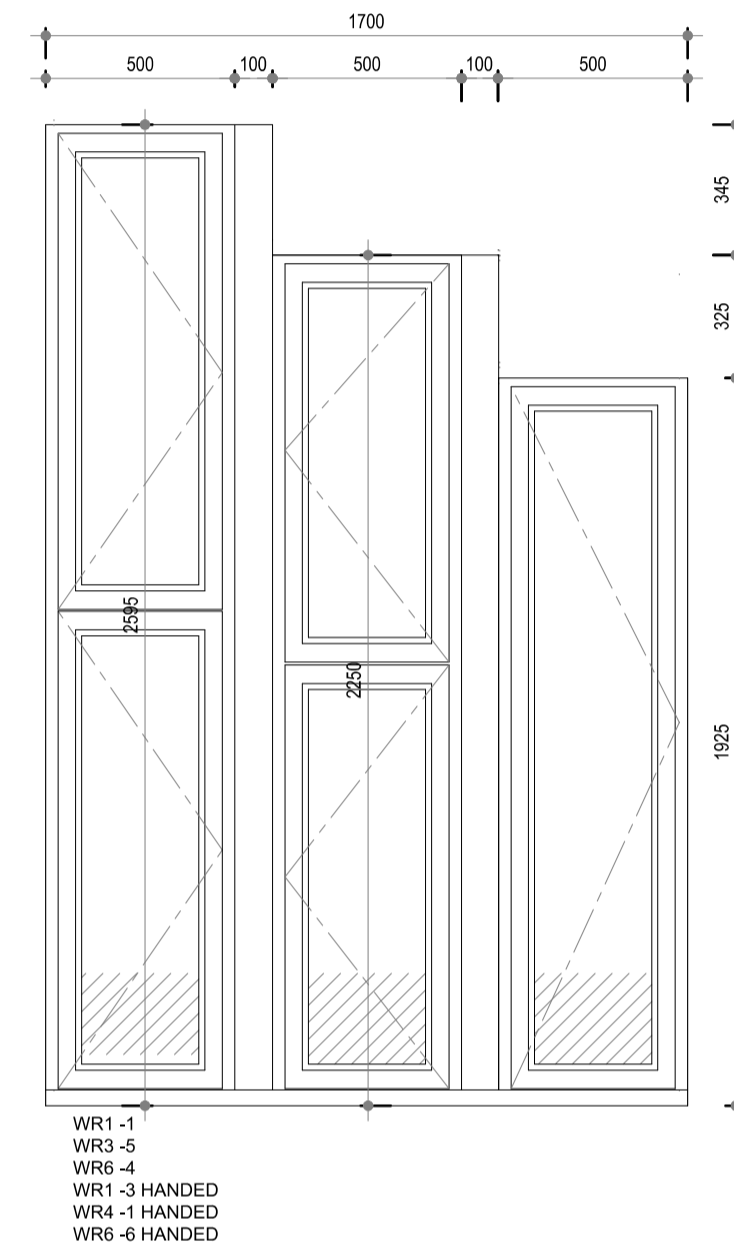
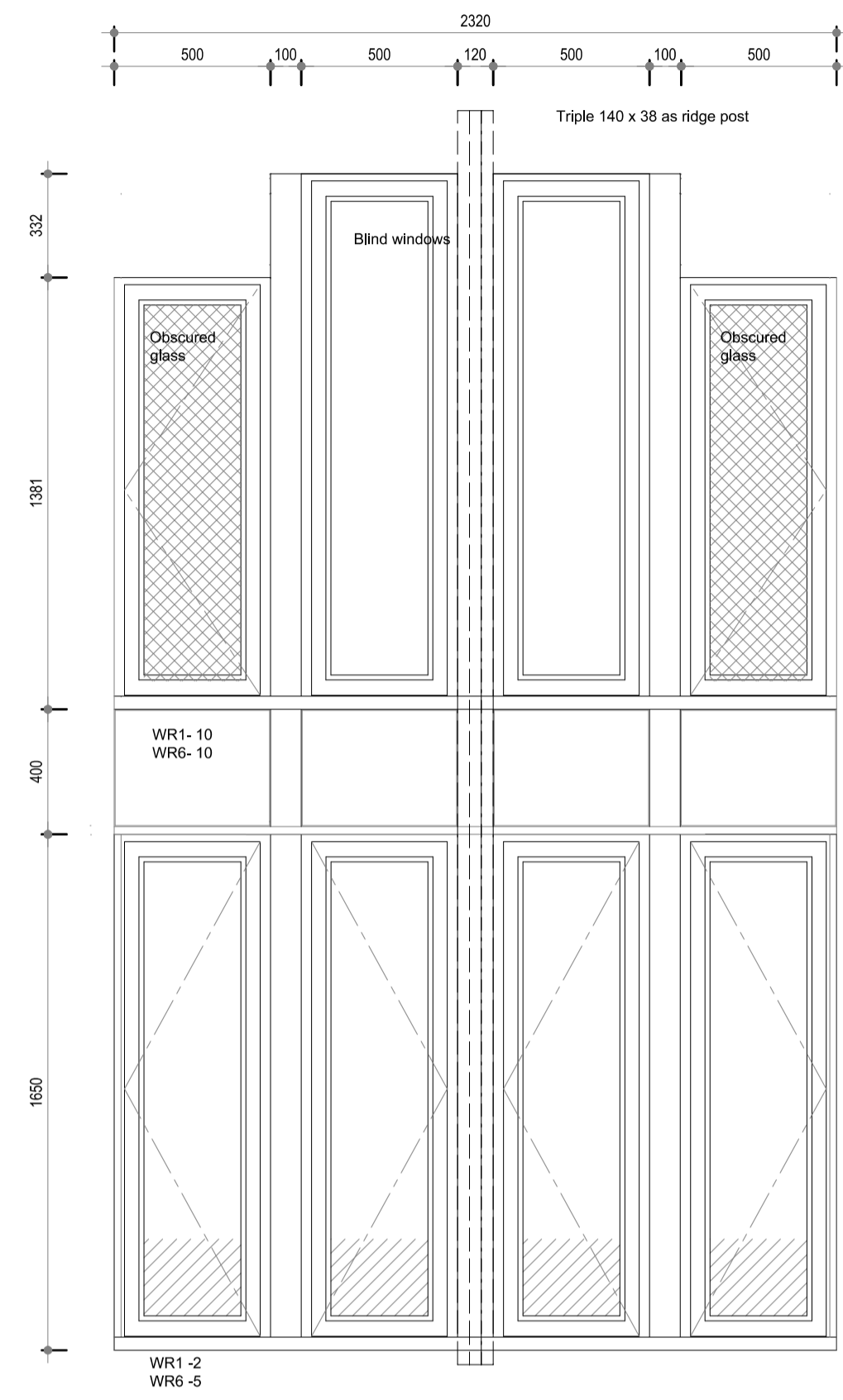
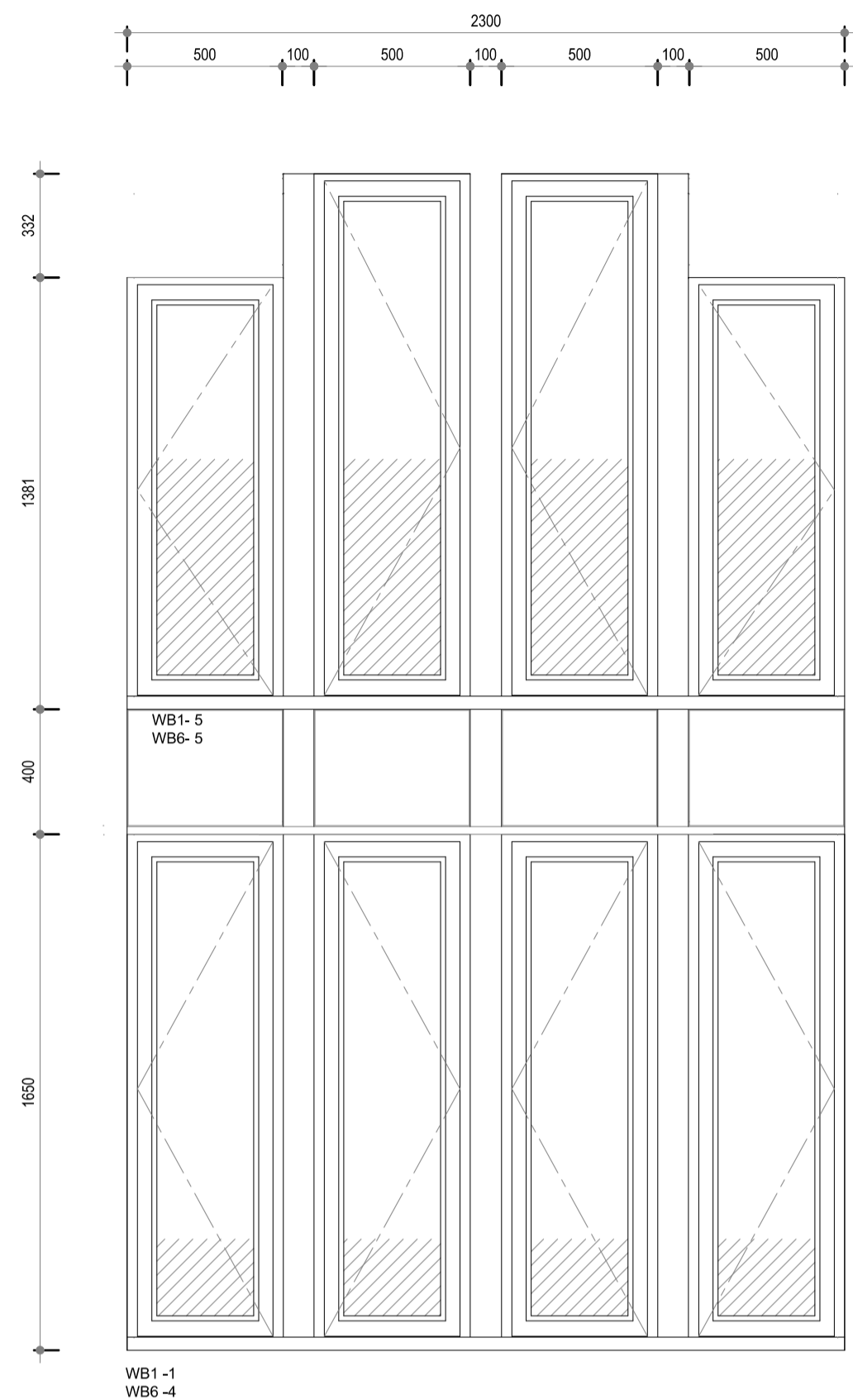


TRICKLE VENTILATION REQUIREMENTS TO BE CONFIRMED AT LATTER DATE ALLOW MIN 8000mm PER UNIT FOR QUOTATION PURPOSES
CALCULATIONS FOR AREAS OF BACKGROUND TRICKLE VENTILATION CALCULATED ALL IN ACCORDANCE WITH AD PART F TABLE 1.2A
NOTE FREE AREA OF TRICKLE VENT UNIT IS APPROX 30% GREATER THAN THE EQUIVALENT AREA
THEREFORE 500mm x 13mm = 6500 TRICKLE VENT PROVIDES ONLY 5000mm² VENTILATION AREA
DOUBLE GLAZED WITH LAMINATED GLASS
COLOUR TO BE CONFIRMED
NOTE ALL DIMENSIONS INDICATED ARE STRUCTURAL OPENING DIMENSIONS & DO NOT ALLOW A FITTING TOLERANCE MANUFACTURER TO ALLOW FITTING TOLERANCE WITHIN THESE DIMENSIONS & TO CHECK OPENING SIZES PRIOR TO MANUFACTURE



Windows to have 28mm double glazed units with min 6mm Optifloat clear toughened glass externally 16mm argon filled cavity 6mm clear Pilkington K glass internally low 'e' soft coating. Min u value of 1.5w/m²k

All windows, doors to be polysulphide mastic pointed externally, & draught stripped internally, window frames set back so that rear of frame is min 35mm from back of brickwork cavity face - refer to detail to provide overlap of blockwork as specified under wall type construction.

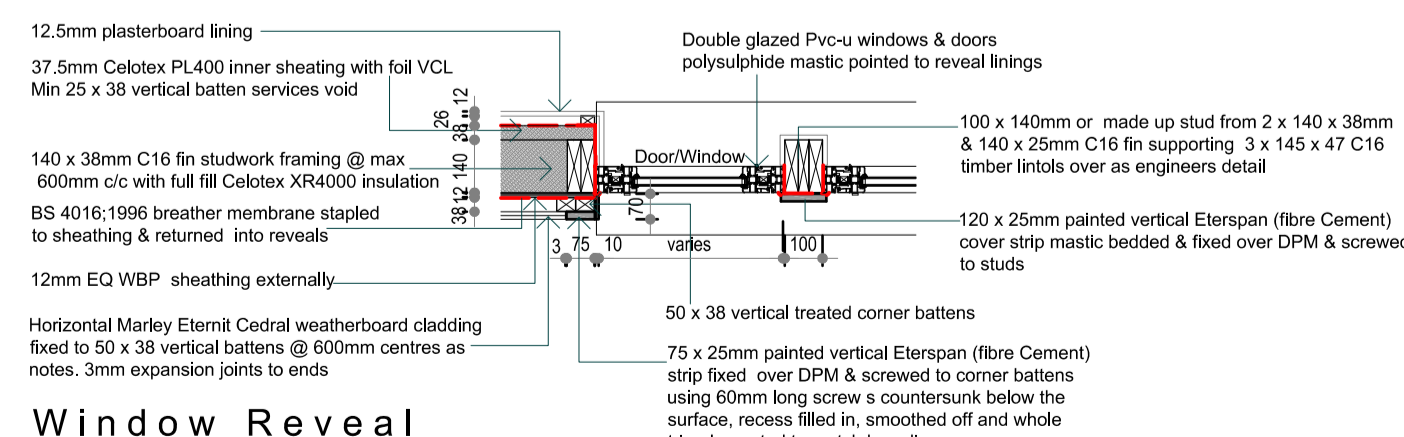
All side hung casement windows where the external ground to sill level exceeds 1500mm or at first floor level or above to be fitted with suitable restrictors to prevent the window opening by more than 100mm - such restrictors to be easily by passed by and adult with out the aid of tools and located out of reach of small children.

Flights - not less than 150mm, or more than 225mm from corners & transom mullion joints & at not more than 600mm centres.

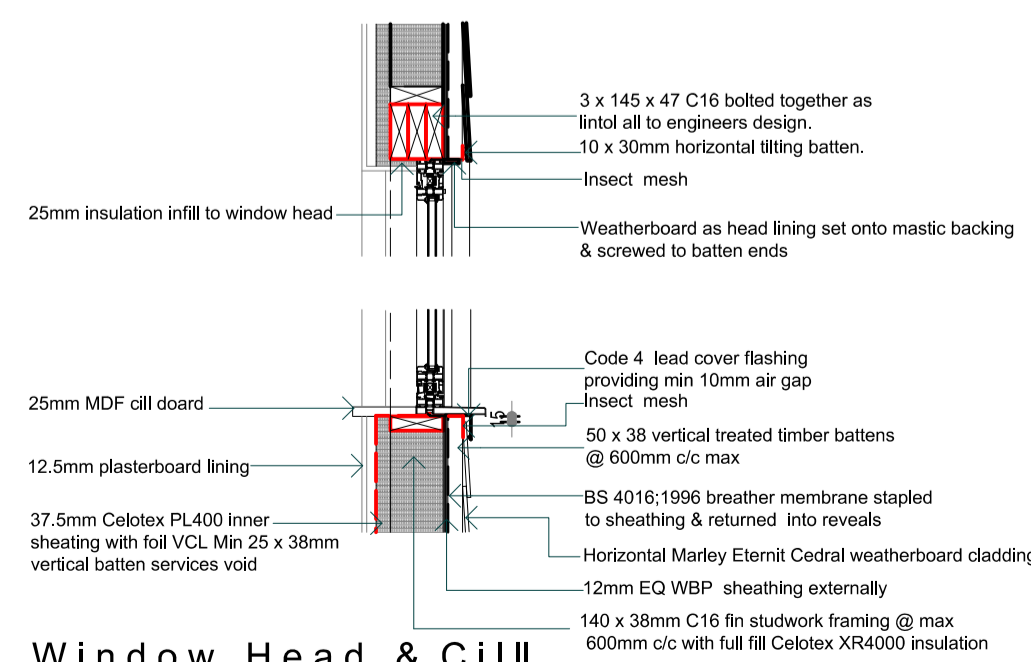
General glazing: double glazed windows in accordance with BS 6262:1982 glazing for buildings with factory fitted double sealed units to BS EN 1279/BS5713 glass-in building - Insulating glass units min o/a thickness 28mm. aluminium separating bars are to be provided between the skins of glass on all four edges. Silicon grain type desiccant to be provided to every section of spacer bar. The units are then to be double sealed with an edge sealant of hot or cold butyl mastic and finally sealed on all edges with an aluminium tape. All windows to have 3rd party certification & be site marked.

Thickness of glass shall be dependent upon site of pane, location in house and exposure conditions. All opening lights (and doors) to be fitted with effective draught-strips.

Toughened or laminated safety glass shall be installed to areas as defined in Approved Document N - i.e. any glazing below 800mm in laminated glass to both external & internal walls, & 1500mm in a door or side panel where within 300mm of either door edge. Glazed doors in accordance with BS6262: 1982 with factory fitted hermetically double sealed double glazed units to BS EN 1279/BS5713: 1979, min 24mm o/a thickness, 6mm clear toughened glass internal & 6mm laminated glass externally.



Window Reveal



Window Head & Sill

Terence C. Burton MCIAT
CHARTERED ARCHITECTURAL TECHNOLOGIST
CONTRACT
MONKS GREEN FARM, MONKS GREEN LANE
BRICKENDON, HERTS. SG13 8QL
DRAWING TITLE
WINDOW SCHEDULE
SCALE 1:20 @ A1
DATE NOV 2011
DRAWING NUMBER 11/MGF/SC/27
REVISION
8 WHEEL WRIGHTS CLOSE
BISHOPS STORTFORD
HERTS.
CM23 4QH
TELEPHONE / FAX
01279 304363