

Party Wall Construction RD-E-WT-2 60 Mins FR

Two separate timber frames, constructed from 140 x 38mm C16 studwork @ max 600mm c/c each with a 12mm minimum thick sheathing board to the cavity facing, spaced a minimum of 50mm apart (360mm minimum between inner facings of wall linings), 19mm Plank & 12.5mm wallboard fixed joints staggered each side. Total nominal mass per unit area 22kg/m².
55mm Isover APR 1200 or 90mm Isover Frame Batt 32 between the studs in each timber frame. Alternative 60mm min mineral wool quilt density (10-60kg/m³ both sides - unfaced, paperfaced or wire reinforced).
Ties between frames not more than 40 x 3mm @ min 1200mm c/c horizontally & 1 row of ties per storey height vertically.

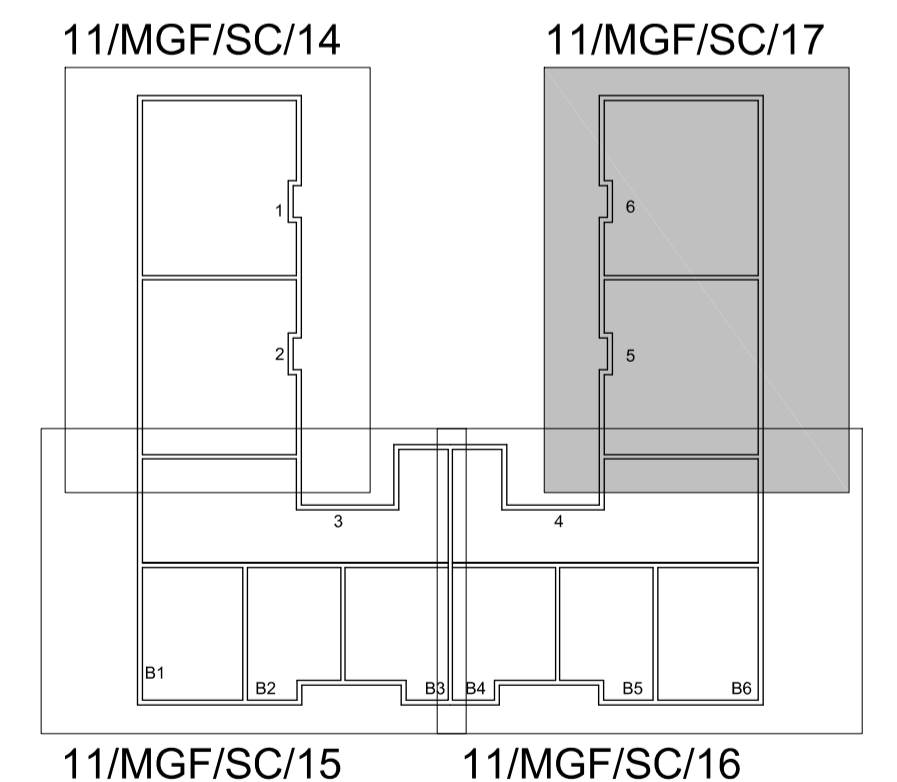
Note services & sockets in party walls.
Provide 19mm Plank & 12.5mm wallboard fixed to enclose electrical boxes/ services & stagger openings on each side of the wall.
Alternatively provide 25mm service void & additional later of plasterboard all securely fixed back to separating wall structure.

Rafters 175 x 50 C16 @400mm c/c max refer to engineers layout. Rafters doubled up either side of velux windows.

2 x Velux or sim approved GGU C06 550 x 1180mm Rooflights over bedroom area, electric operation, installed all in accordance with manufacturers requirements & recommendations utilising recessed installation flashing unit suitable for duo twin units & Redland Cambrian slate.

Double rafters both sides of opening with noggins as required between units to frame opening.

Valley rafter - 3 x 225 x 75 C24 bolted together with multiple studs to external wall location all to engineers design.



Terence C. Burton MCIAT
CHARTERED ARCHITECTURAL TECHNOLOGIST

CONTRACT
MONKS GREEN FARM, MONKS GREEN LANE
BRICKENDON, HERTS. SG13 8QL

DRAWING TITLE
FIRST FLOOR LAYOUT
UNITS R5 & R6

SCALE
1:50

DATE
OCT 2011

DRAWING NUMBER
11/MGF/SC/17

REVISION

8 WHEEL WRIGHTS CLOSE
BISHOPS STORTFORD
HERTS.
CM23 4QH
TELEPHONE / FAX
01279 304363