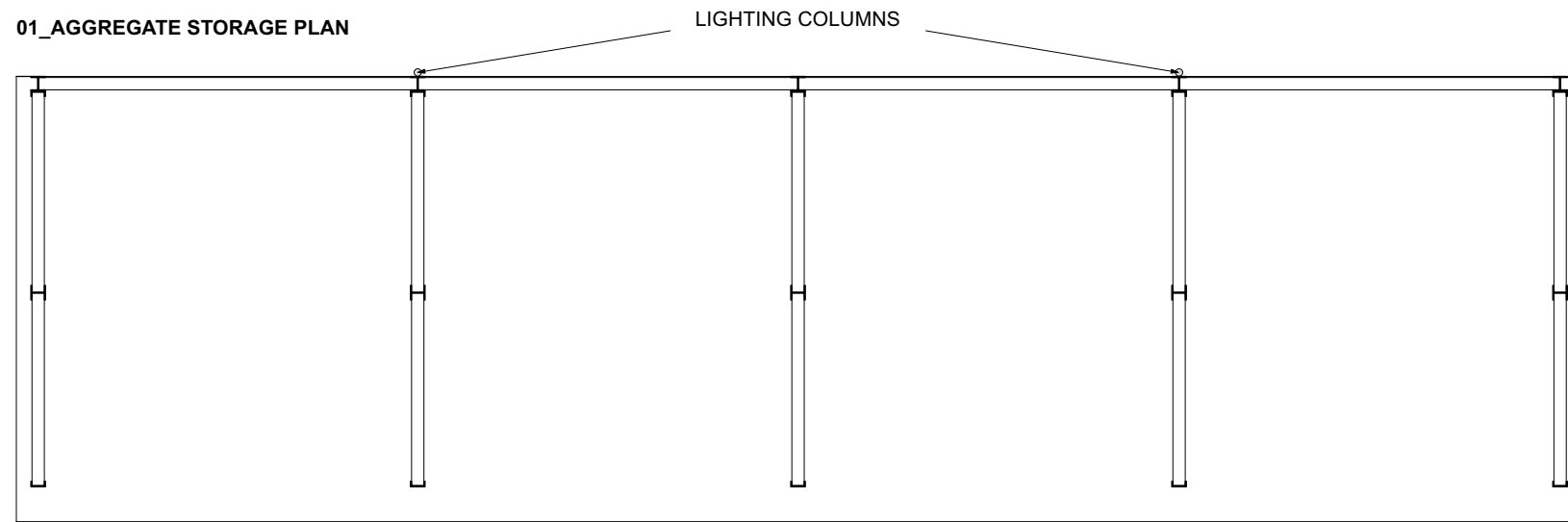
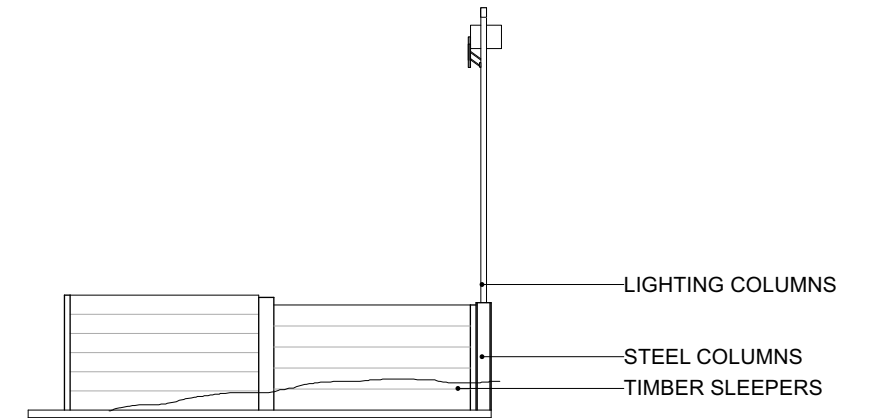


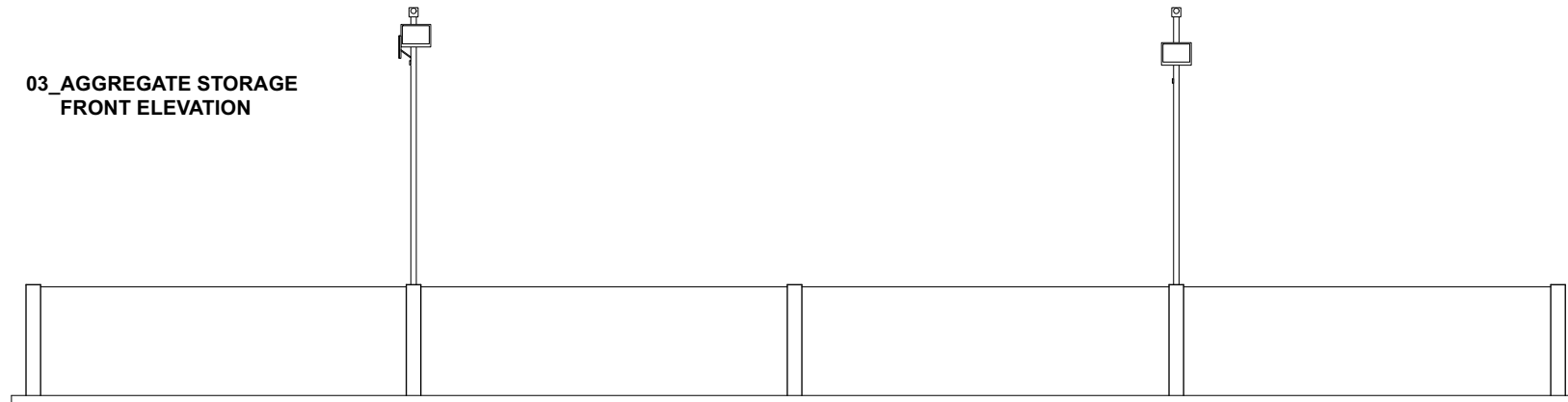
01\_AGGREGATE STORAGE PLAN



02\_AGGREGATE STORAGE SIDE ELEVATION



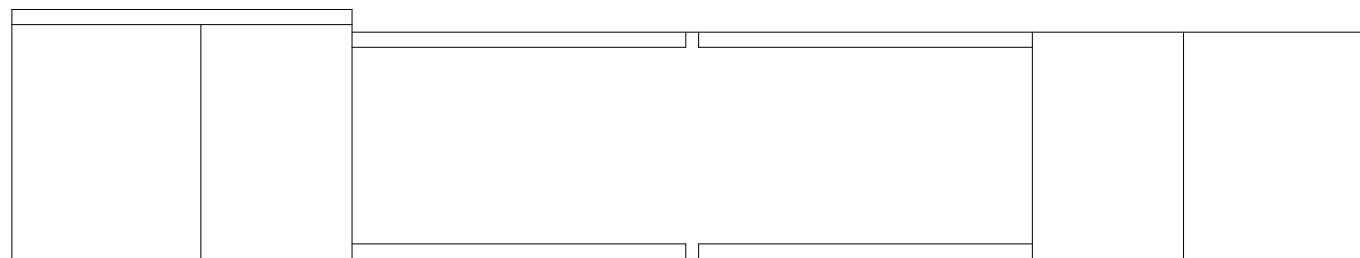
03\_AGGREGATE STORAGE FRONT ELEVATION



EXISTING MATERIALS\_AGGREGATE STORAGE



04\_WEIGHBRIDGE PLAN



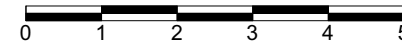
05\_WEIGHBRIDGE ELEVATION



EXISTING WEIGHBRIDGE

Orchard Hill Farm Ltd

Revisions:



Orchard Hill Farm, Andover

Aggregate Storage Bays & Weighbride

www.forge-ds.co.uk

Forge Design Studio  
Cowesfield  
Whiteparish  
Salisbury  
SP5 2RB

info@forge-ds.co.uk  
studio 01794 885872

Forge  
Design Studio

Figured dimensions only are to be taken from this drawing. Do not scale from this drawing. All dimensions are in millimetres unless otherwise stated. All dimensions and setting out co-ordinates shall be checked on site prior to work commencing. Any discrepancies shall be reported to Forge Design Studio.  
Forge Design Studio asserts its rights under the Copyright, Designs and Patents Act 1988, unless otherwise agreed in writing. All rights reserved.

Status: For Planning

Drawn by: LM Date: January 2023

Checked by: MH Date: January 2023

Scale: 1:100 @ A3

Project no: 202302

Drawing no: PL007

Revision: