



Section A-A

Site Plan Key

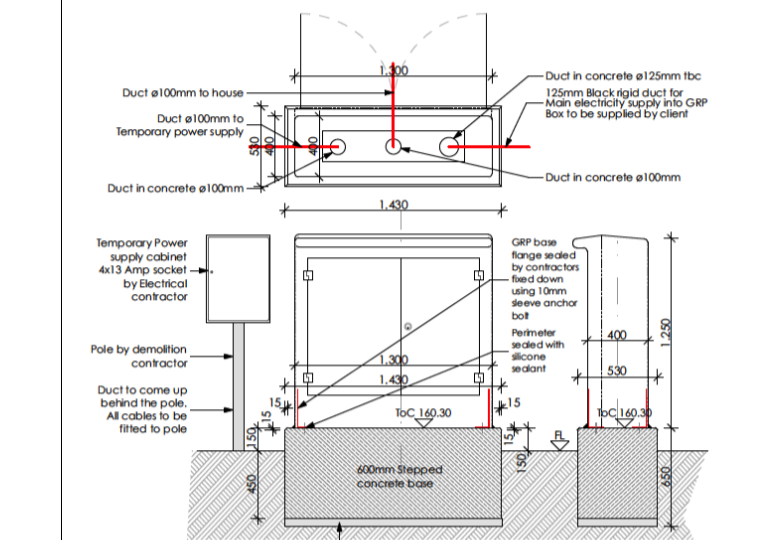
SURVEY ABBREVIATIONS

AV	Air Valve	Multi	Multiple cables/pipes
BL	Beam Level	PM	Parking Meter
BT	British Telecom	RE	Rodding Eye
C	Cill Level	RWP	Rainwater Pipe
CCTV	Closed Circuit Television	RS	Road Sign
CI	Coining Level	SF	Soffit Depth
Comms	Communications cable	Skw	Sink Waste
CTV	Cable Television	SL	Soffit Level
D	Door Head Level	SVP	Soil Vent Pipe
Elec	Electricity cable/apparatus	TCB	Telephone Call Box
EML	Electromagnetic Location	TFR	Taken From Records
EOT	End of Trace	THL	Threshold Level
ER	Earth Rod	UTL	Unable to Lift
FL	Floor Level	UTT	Unable to Trace
FH	Fire Hydrant	VP	Vent Pipe
GY	Gully	WM	Water Meter
GPR	Ground Penetrating Radar	WO	Wash Out
GV	Gas Valve		
H	Head Level		
HV	High Voltage >1000v		
HW	Heating		
IC	Inspection Chamber		
IL	Invert Level		
LP	Lamp Post		
LV	Low Voltage <1000v		

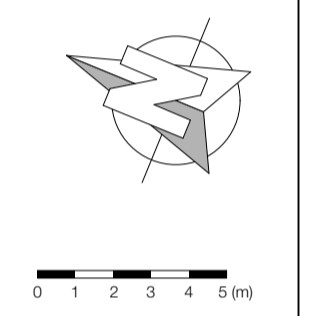
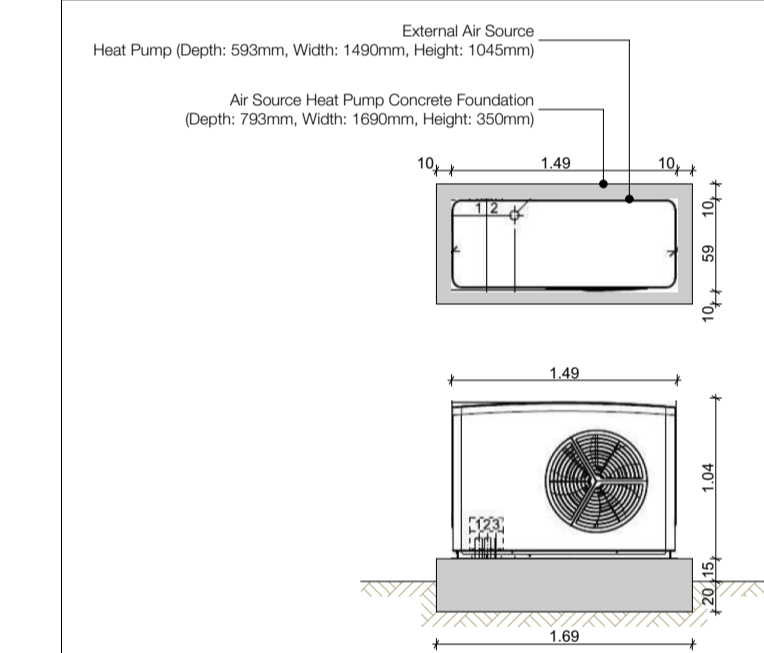
Buried Services Key

Air Conditioning	Gas	
Cable TV	GPR Linear Feature	
Combined Drainage	High Voltage Electricity	
Communications	Low Voltage Electricity	
Earthing	Surface Water	
Fiber Optics	Telecoms	
Foul Water	Unknown Service	
Fuel	Water Supply	
Flow Direction	Depth of Service below ground level	0.65d

Utility Cabinet Details



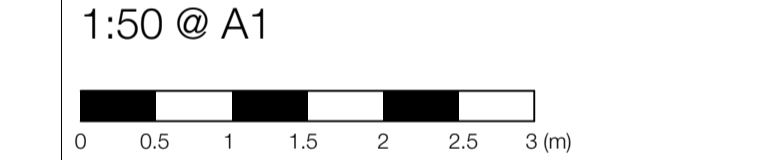
Air Source Heat Pump Details



Schedule of Materials:

Roof 'Main Structure':	Interlocking Grey Roof Tiles Flat Roof Covered With Natural Pebbles
Timber Structure:	Laminated Scandinavian Spruce stained Dark Grey
Wall type:	White render walls with clerestory windows Argon gas filled triple glazing with clerestory windows.
Landscaping:	All landscaping shown is indicative only

Status: ISSUE



Type	WPL 25 AS
Part no.	232492
Output at A2/W35 (EN 14511)	8.32 kW
Output at A-7/W35 (EN 14511)	13.05 kW
Coefficient of performance at A2/W35 (EN 14511)	3.96
Coefficient of performance at A-7/W35 (EN 14511)	2.98

Technical data

Energy efficiency class, heat pump W35	A++
Energy efficiency class, W35 heat pump	A++
Energy efficiency class, composite system (heat pump + controller) W35	A+++
Energy efficiency class, composite system (heat pump + controller) W35	A++
Sound power level (EN 12102)	56 dBA
Sound pressure level at 5 m distance in a free field	34 dBA
Rated compressor voltage	230 V
Rated voltage, emergency/booster heater	230 V
Max. application limit on the heating side	65 °C
Height	1045 mm
Width	1490 mm
Depth	593 mm
Weight	175 kg

PETER HUF ARCHITECTURE

The Control Tower | 12 De Havilland Drive | Brooklands
Weybridge | Surrey | KT13 0YP

Title: PLANNING APPLICATION REPLACEMENT DWELLING

Architect: Peter Huf M.Arch., DipL-Ing (FH)
Client: Mat Shaylor
Site Address: Carton House Redwood Lane Medstead Alton GU34 5PE

Project: HUF HAUS
Model: ART
Plan: Proposed Site Plan
Scale: 1:200@A1
Drawing No.: b120d



Minimum carrying capacity of driveway = 12.5 / 17.5t TBC by Fire Brigade
 Minimum width of driveway = 3.7m between kerbs
 Minimum width of entrance = 3.1m