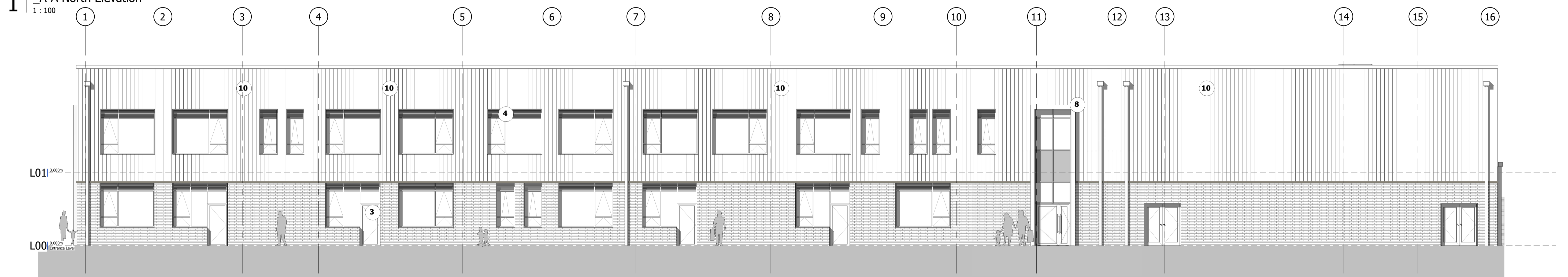
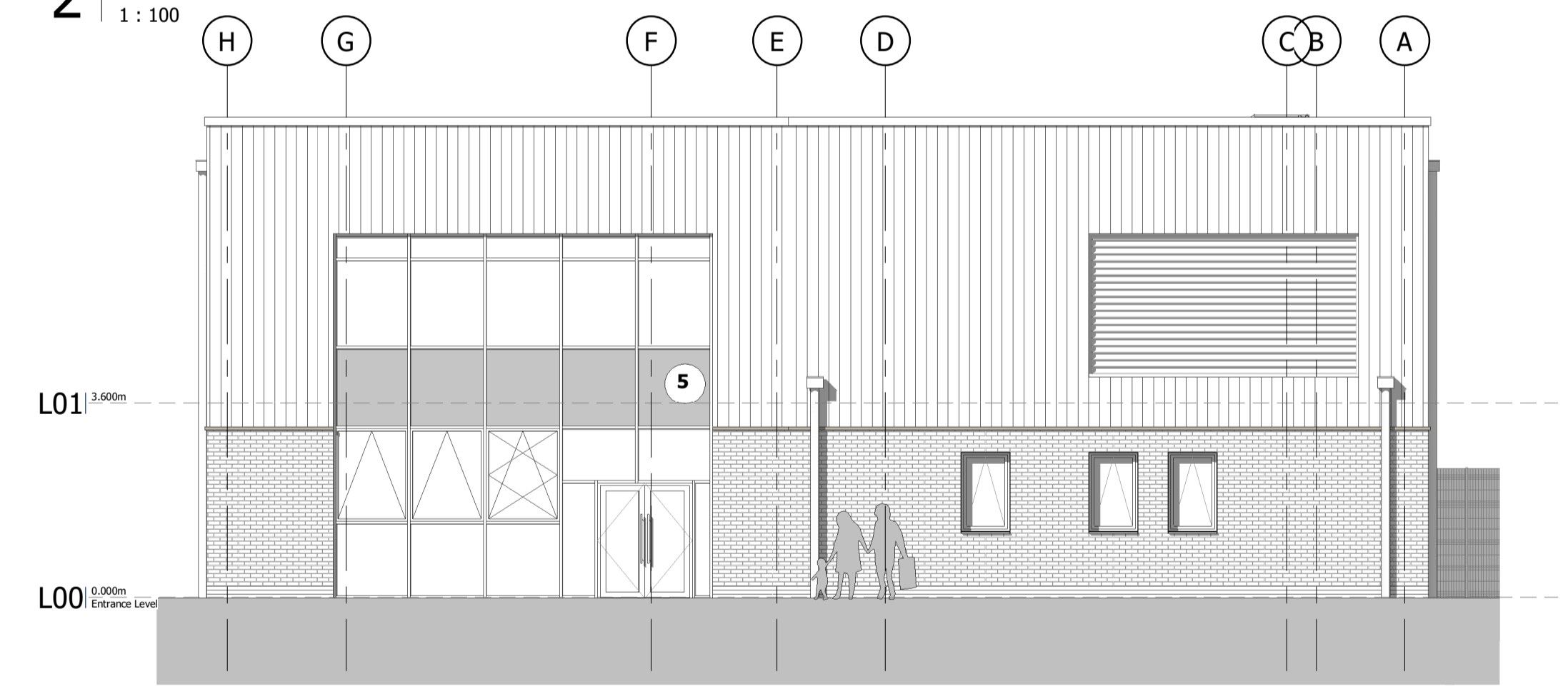




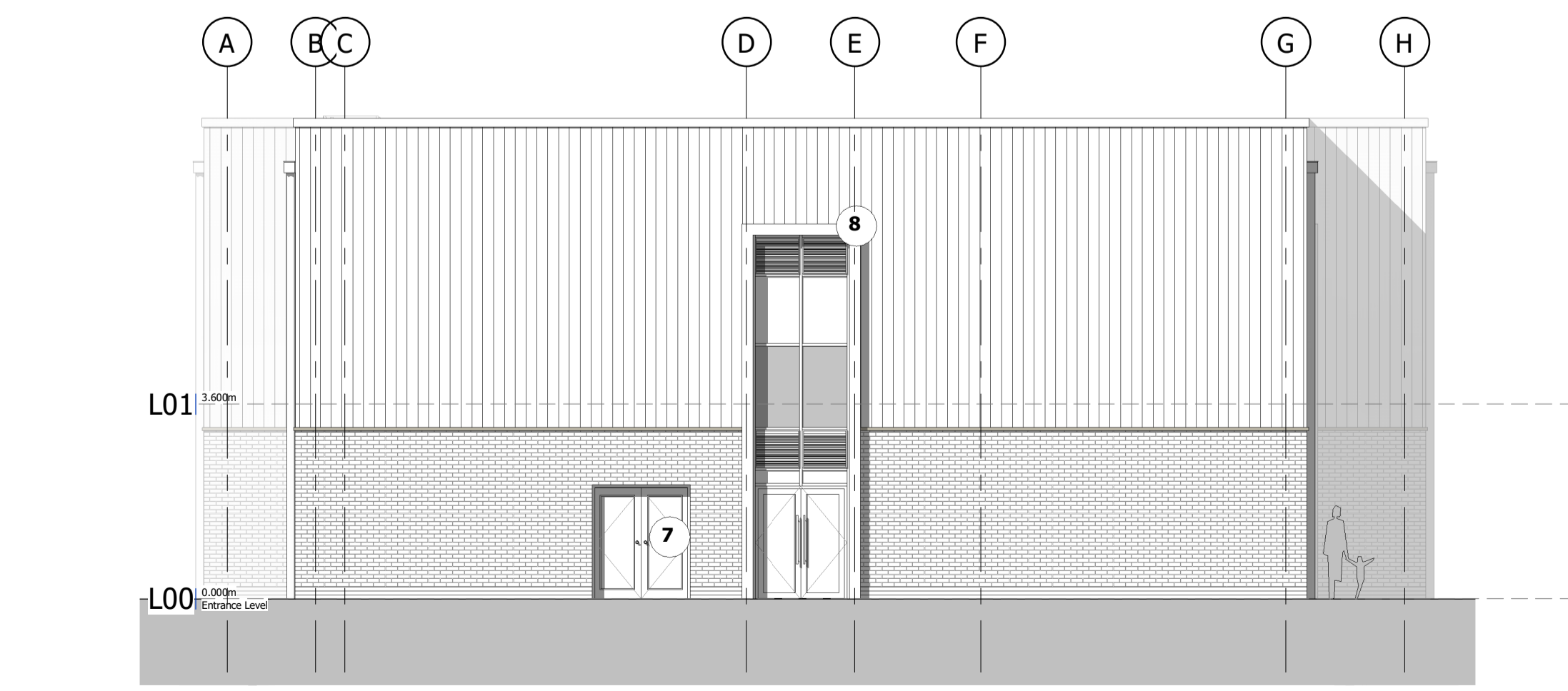
1 | A-A North Elevation
1 : 100



2 | C-C South Elevation
1 : 100

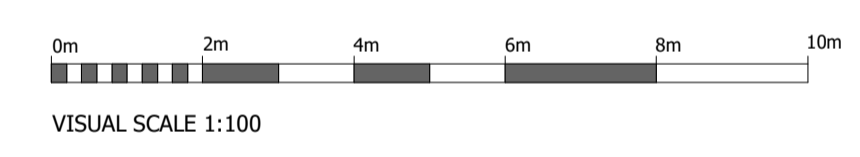
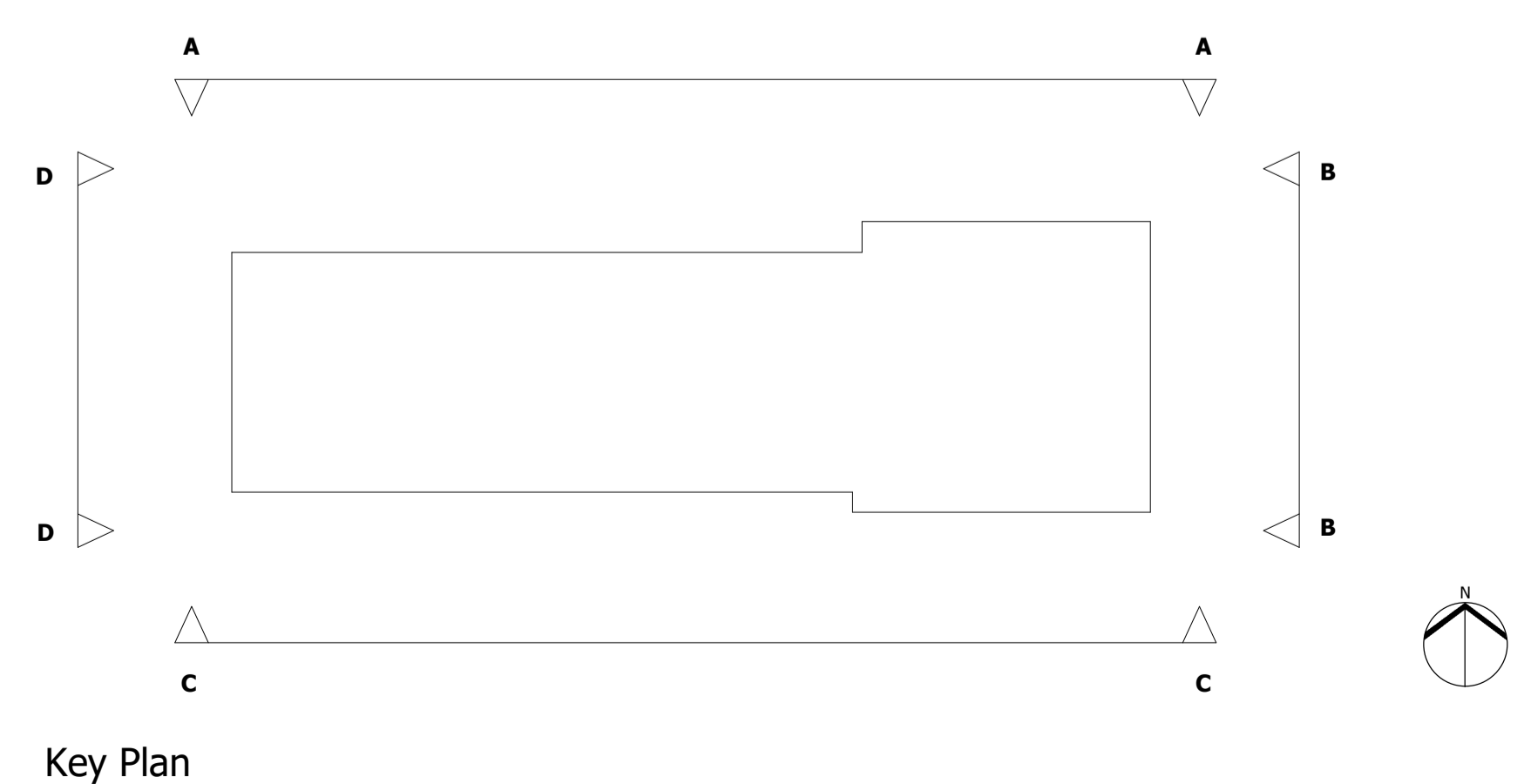


3 | B-B East Elevation
1 : 100



4 | D-D West Elevation
1 : 100

- Materials Key**
- 1 Buff Brick, running bond. Mortar colour: Mid Buff
 - 2 Non-combustable Aluminium cladding panels, colour: mushroom
 - 3 Powder-coated Aluminium glazed doors and windows, colour: to match cladding
 - 4 Integrated louvre ventilation panel to match glazing frames
 - 5 Insulated spandrel panel, colour: Light Grey
 - 6 Non-illuminated building Signage
 - 7 Powder-coated Steel External Storage door, colour: Dark Grey
 - 8 Powder-coated Aluminium flashing to Entrance in school colours
 - 9 Grey/Blue plinth brick
 - 10 Bat Boxes
 - 11 Obscure Glazing

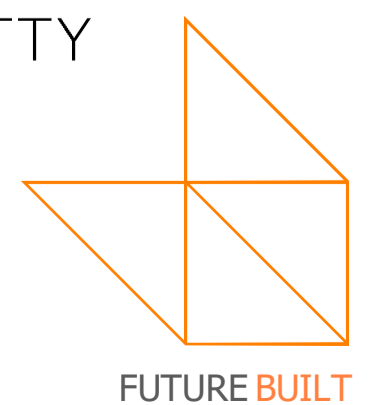


Rev:	Date:	Drawn:	Checked:	Description:
PL				Planning

Hempland Primary School
Elevations - Proposed
 Location:
 Whitby Ave
 York
 YO31 1ET
 Client:
 ISG

UP/N	Originator	Zone	Level	Type	Role	Series/Number	Revision:
SRP1062-WBA-AA-XX-D-A-0130							P02
Date:	Drawn:	Checked:	Scale:	@A1	Int Job No:		
07/2023	JN	PN	As indicated		3783-011		

NATSON BATTY ARCHITECTS
 Shires House, Shires Road
 Guiseley, Leeds LS20 8EU
 Leeds Loughborough
 T: 01943 876 665
 E: enquiries@watsonbatty.com
 W: www.watsonbatty.com



Note: Do not Scale from this drawing. All dimensions to be checked on site