

Drawings to be read in conjunction with arboricultural impact appraisal and method statement. If in any doubt, details should be confirmed with project arboricultural consultant prior to commencement. All work within root protection areas of trees should only commence following briefing from project arboricultural consultant. It should be confirmed that no higher restrictions, including but not limited to those required by Tree Preservation Order (TPO) conservation areas, planning condition and/or protected species legislation, are in force before commencing ANY work recommended as part of this drawing. Associated reports or verbal advice provided by the project arboricultural consultant.

**SITE MANAGER - ENSURE NO OPERATIONS WITHIN RPA WITHOUT CONSULTATION WITH PROJECT ARBORICULTURAL CONSULTANT (INCLUDES ECOLOGICAL MEASURES SUCH AS REPTILE FENCING)**



**TREE PROTECTION AREA  
KEEP OUT!**

TREES ENCLOSED BY THIS FENCE ARE PROTECTED BY PLANNING CONDITIONS AND/OR ARE THE SUBJECT OF A TREE PRESERVATION ORDER. CONTRAVENTION OF A TREE PRESERVATION ORDER, MAY LEAD TO CRIMINAL PROSECUTION. THIS FENCING MUST NOT BE REMOVED WITHOUT PERMISSION FROM THE TREE AND LANDSCAPE OFFICER.

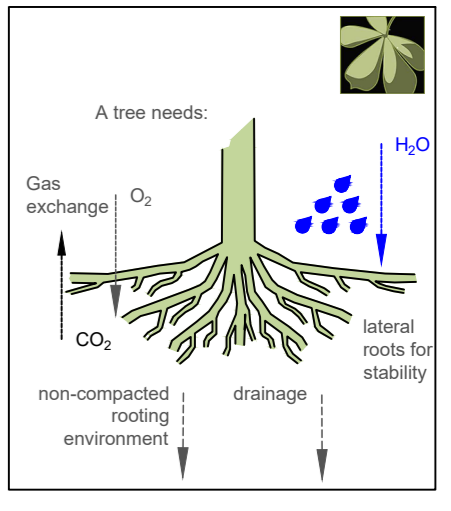
**ATTENTION!**

**TREE PROTECTION**

Tree protection comprises two elements;

1. Fencing AND;
2. ground protection

**Do not assume that because you are outside the fence you are outside the RPA.**



**Arboricultural supervision**

Minimum expectations:

1. pre-commencement meeting - see box below.
2. protective measures install/sign off
3. demolition and hard surface removal in RPA.
4. foundations in RPA
5. special surfacing in RPA.
6. any other potentially damaging operations in RPA.

The above should be documented as part of an auditable system of arboricultural site monitoring by the project arboricultural consultant. Refer to relevant sections of arboricultural impact appraisal and operation guidance in arboricultural method statement. If in doubt contact author of this document.

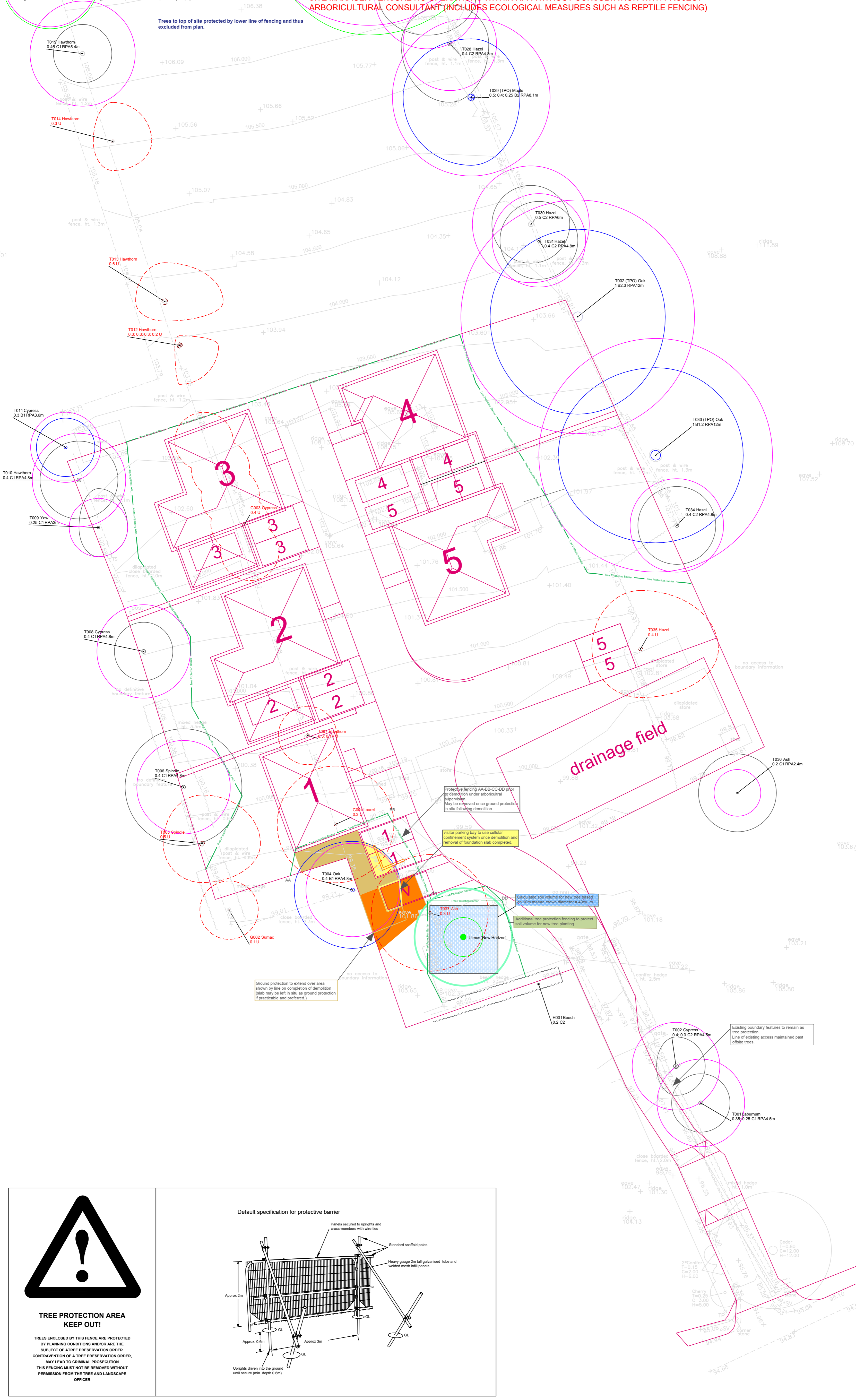
**Important note**

A pre-commencement meeting must be held on site before any development, demolition or site preparation works start.

The methods of tree protection outlined on this plan and within the associated arboricultural report should be fully discussed at this meeting so that all aspects of their implementation and sequencing are made clear to all parties.

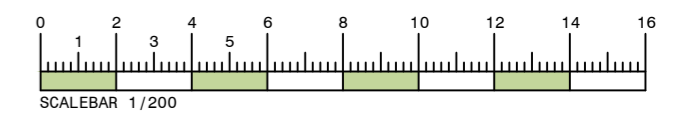
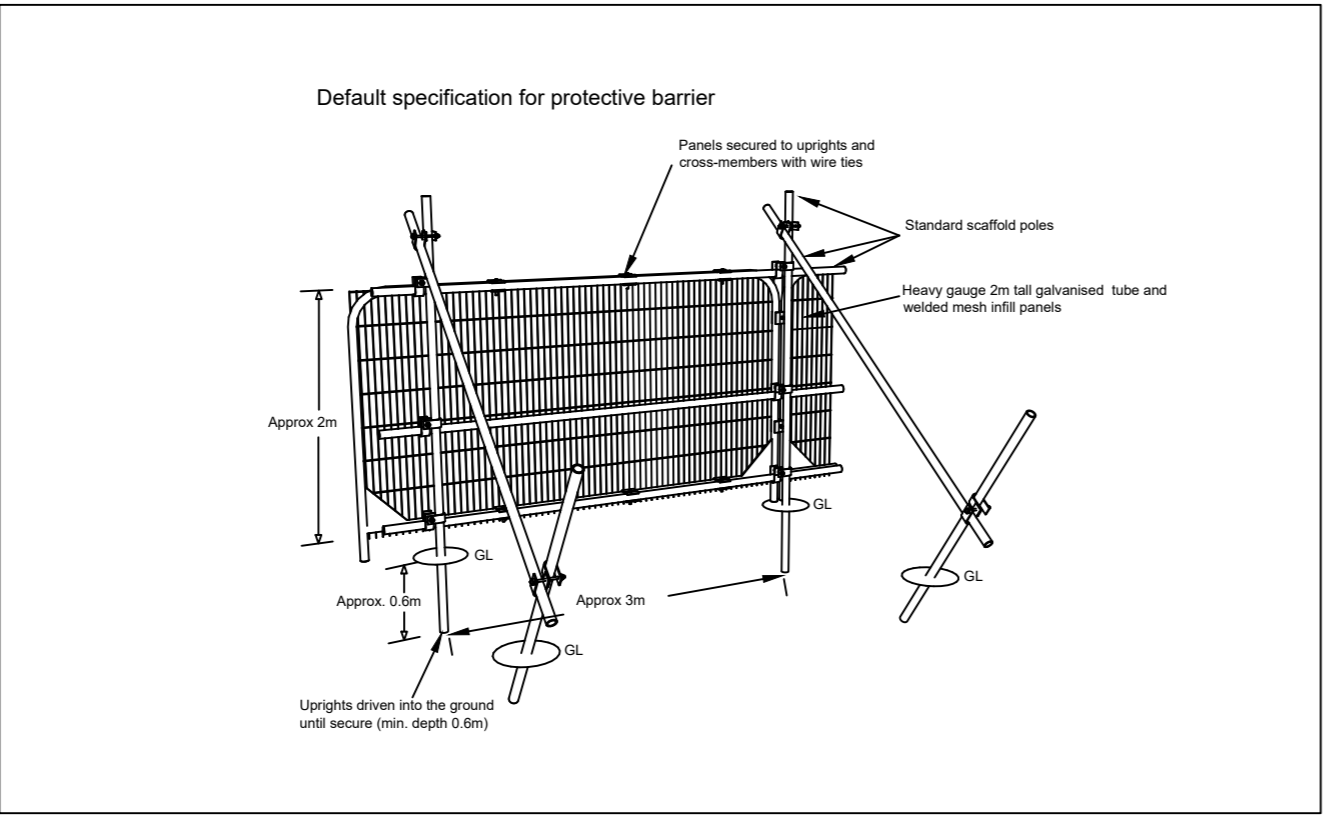
Any clarifications or modifications must be recorded and circulated to all parties in writing.

# TREE PROTECTION PLAN




**TREE PROTECTION AREA  
KEEP OUT!**

TREES ENCLOSED BY THIS FENCE ARE PROTECTED BY PLANNING CONDITIONS AND/OR ARE THE SUBJECT OF A TREE PRESERVATION ORDER. CONTRAVENTION OF A TREE PRESERVATION ORDER, MAY LEAD TO CRIMINAL PROSECUTION. THIS FENCING MUST NOT BE REMOVED WITHOUT PERMISSION FROM THE TREE AND LANDSCAPE OFFICER.



## Legend

<p>Tree number</p> <p>Common name</p> <p>Tag number (where tags used)</p> <p>Indicative crown spread based on measurements at cardinal points (N,S,E,W). Trees for removal shown with dotted red canopy line</p> <p>Stem diameter at stem diameter in metres"</p> <p>British Standard category in words</p> <p>British Standard category as colour coded circle and crown spread (retained trees only)</p> <p>*where the tree is multi-stemmed, the figure stated is the calculated combined stem diameter, as recommended by BS5837:2012 (unless otherwise stated in the drawing)</p>	<p>Proposed new development.</p> <p>Tree Protection barrier - Protective fencing to BS5837:2012. Refer to BS5837 figure 2 and figure 3 as appropriate.</p> <p>Precautions will be required during demolition to prevent damage to RPA and above ground parts of trees. Protective fencing may be relaxed to undertake operations following approval by project arborist and should be replaced once operation is completed. Refer to relevant sections of arboricultural impact appraisal and method statement.</p> <p>Low impact surfacing will be required to install new access and/or parking areas within RPA to prevent root damage. Protective fencing may be relaxed to undertake operations following approval by project arborist and should be replaced once operation is completed. Refer to relevant sections of arboricultural impact appraisal and method statement.</p>	<p>Space restrictions will require ground protection capable of supporting the level of construction traffic entering the area (refer to guidance in text box within drawing). Refer to relevant sections of arboricultural impact appraisal and method statement.</p> <p>Indicative location and suggested species of new semi mature tree. Crown spread shown as estimated after 25 years (thin circle)(data from Hillier's design guide) and ultimate crown spread (thicker circle)(data from Gruffydd - Tree Form, Size and Colour). Species selection guided by the above and Tree Species Selection for Green Infrastructure (Hrons and Sjman, 2018)</p> <p>Area where additional rooting volume will be required under new infrastructure (e.g. silva cell modular suspended pavement system) to allow successful establishment of new tree planting. Refer to relevant sections of arboricultural impact appraisal and operation guidance in arboricultural method statement.</p>	<p>Ground protection specification for different levels of construction traffic (after BS587:2012):</p> <ul style="list-style-type: none"> <li>• Pedestrian movements - scaffold boards placed either on top of a driven scaffold frame to form a suspended walkway; or on top of a compression resistant layer of 150 mm depth of woodchips, laid onto a geotextile membrane;</li> <li>• Plant (pedestrian operated up to 2 t gross weight) - proprietary, inter linked ground protection boards placed upon a compression resistant layer of 150 mm depth of woodchips, laid onto a geotextile membrane;</li> <li>• Construction traffic (wheeled or tracked exceeding 2 t gross weight) - an alternative system (e.g. proprietary systems or pre cast reinforced concrete slabs) to an engineering specification designed in conjunction with the project arboricultural consultant, to accommodate the expected loading.</li> </ul>
----------------------------------------------------------------------------------------------------------------------------------------------------------------------------------------------------------------------------------------------------------------------------------------------------------------------------------------------------------------------------------------------------------------------------------------------------------------------------------------------------------------------------------------------------------------------------------------	-----------------------------------------------------------------------------------------------------------------------------------------------------------------------------------------------------------------------------------------------------------------------------------------------------------------------------------------------------------------------------------------------------------------------------------------------------------------------------------------------------------------------------------------------------------------------------------------------------------------------------------------------------------------------------------------------------------------------------------------------------------------------------------------------------------------------------------------------------------------------------------------	-------------------------------------------------------------------------------------------------------------------------------------------------------------------------------------------------------------------------------------------------------------------------------------------------------------------------------------------------------------------------------------------------------------------------------------------------------------------------------------------------------------------------------------------------------------------------------------------------------------------------------------------------------------------------------------------------------------------------------------------------------------------------------------------------------------------------------------------------------------------------------------------------------------------------------------------------------------------------------------------	-----------------------------------------------------------------------------------------------------------------------------------------------------------------------------------------------------------------------------------------------------------------------------------------------------------------------------------------------------------------------------------------------------------------------------------------------------------------------------------------------------------------------------------------------------------------------------------------------------------------------------------------------------------------------------------------------------------------------------------------------------------------------------------------------------------------------------------------------------------------------------------------------------------------------------------------

**Technical Arboriculture**  
www.techarb.co.uk

**The DENE Ropley**  
July 2023  
A0A0MS-KC/GD/ROPLEY/001  
DRAWING NO KC  
SCALE 1:200 at A0  
STATUS FINAL  
REVISION 0

REVISION NOTES

