



*Plate 30 Possibly reused timber in the cowhouse, facing west.*



*Plate 31 West internal elevation of the cowhouse, facing west.*



*Plate 32 North shippon, facing southeast.*



*Plate 33 Timber stalls in the cowhouse, facing southeast.*



*Plate 34 Central passage in the north shippon, facing south.*



*Plate 35 Blocked aperture in the north shippon. Facing west.*



*Plate 36 Door in the north elevation. Large beam supporting the hayloft.*



*Plate 37 West outshut interior, facing north.*



*Plate 38 Doorway in the west elevation of the barn, facing east.*



*Plate 39 North part of the west outshut, facing northeast.*



*Plate 40 Interior of the east outshut, facing southwest.*



*Plate 41 East elevation of the main range, facing southwest.*





Plate 42 Interior of the east outshut, facing south.



Plate 43 Sliding door in the east outshut, facing west.



*Plate 44 Modern part of the east outshut, facing southeast.*



*Plate 45 East elevation of the cottage, facing west.*



*Plate 46 General view of the cottage, facing northwest.*



*Plate 47 East elevation of the cottage, facing southwest.*



*Plate 48 South elevation of the cottage, facing north.*



*Plate 49 West elevation of the cottage with a modern extension, facing southeast.*



*Plate 50 West gable of the cottage, facing southeast.*



*Plate 51 North elevation of the cottage, facing south.*



*Plate 52 Room 1 in the cottage, facing southeast.*

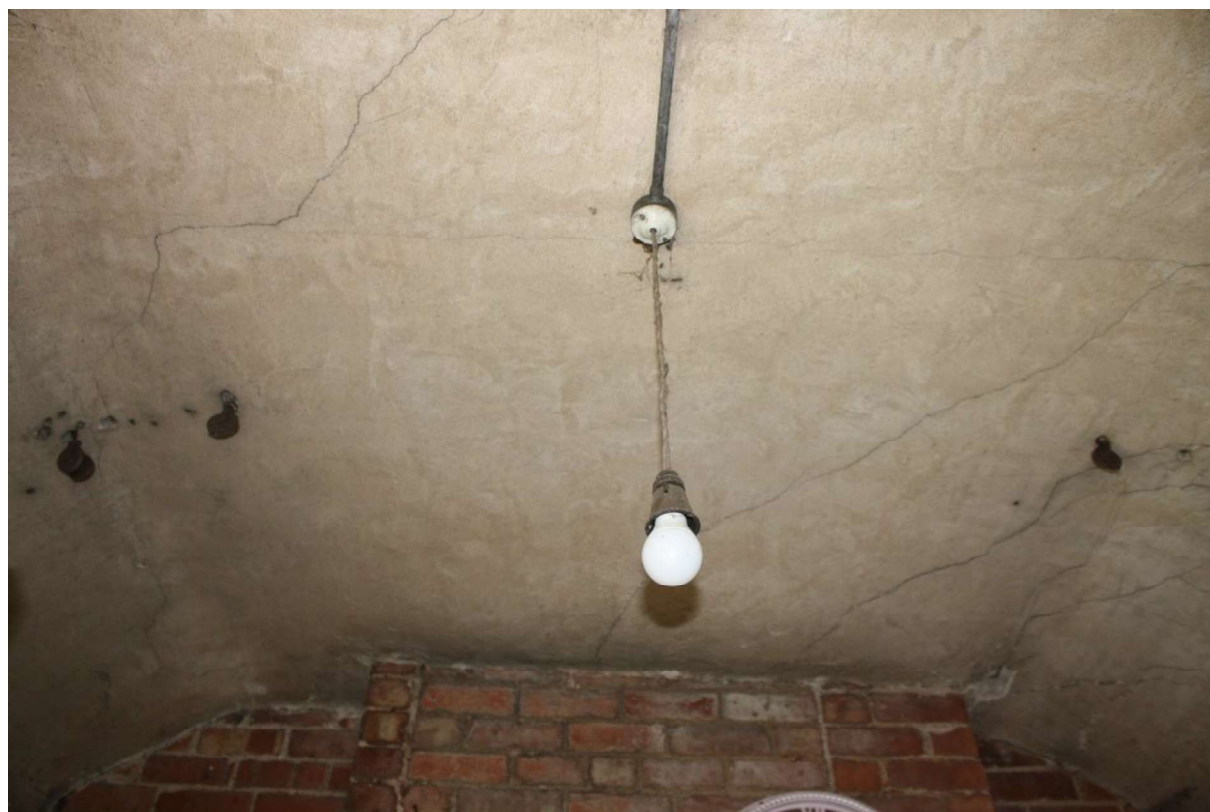


*Plate 53 Room 2 in the cottage, facing south.*





*Plate 54 Fireplace in Room 3, facing southeast.*



*Plate 55 Iron fittings in Room 3, facing east.*



*Plate 56 Door between Room 1 and modern outshut, facing east.*



*Plate 57 Ornate handle in Room 1.*



*Plate 58 Modern extension, facing northwest.*