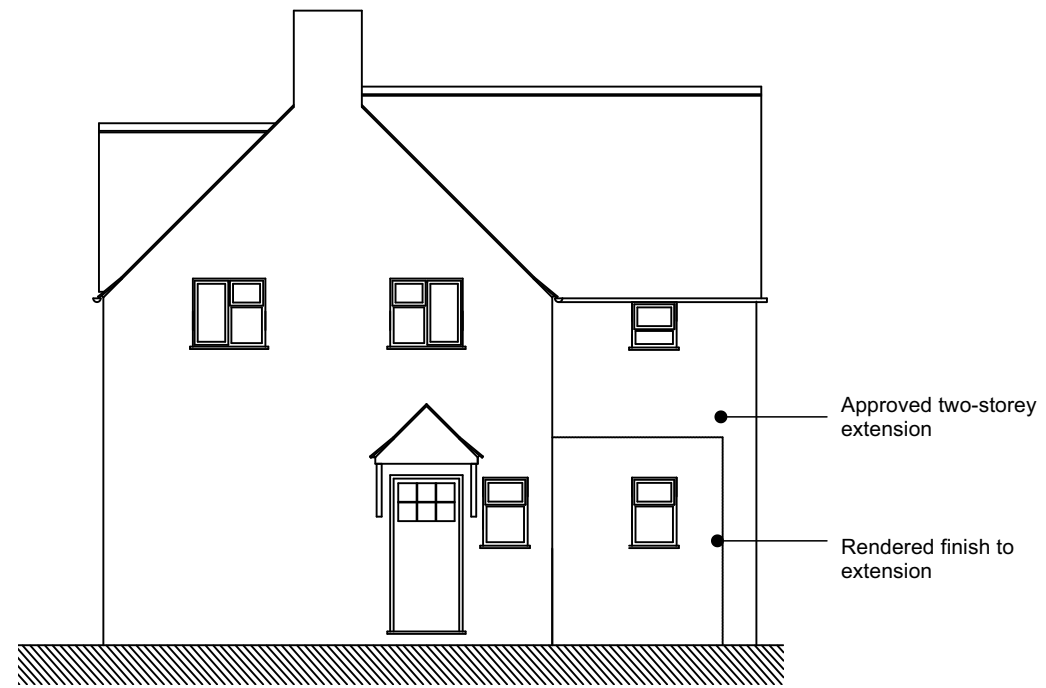
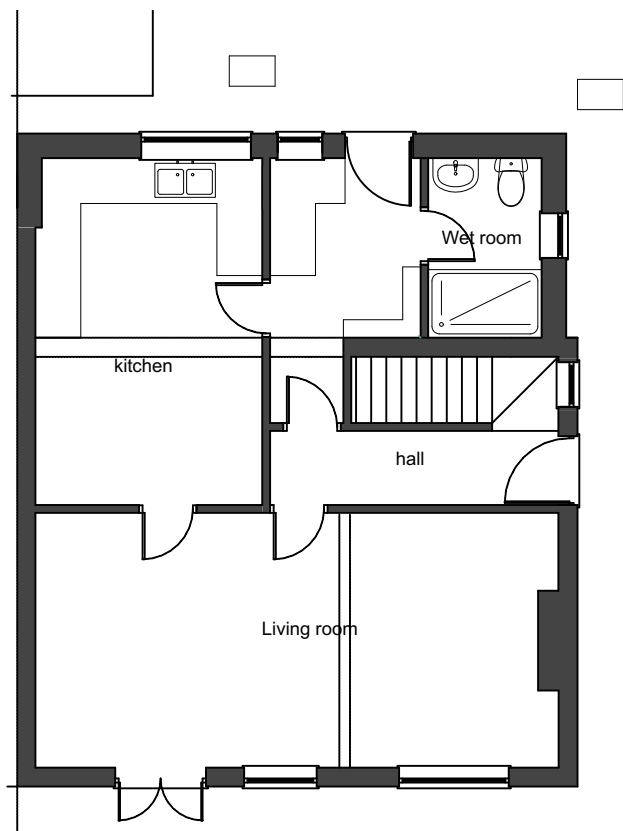


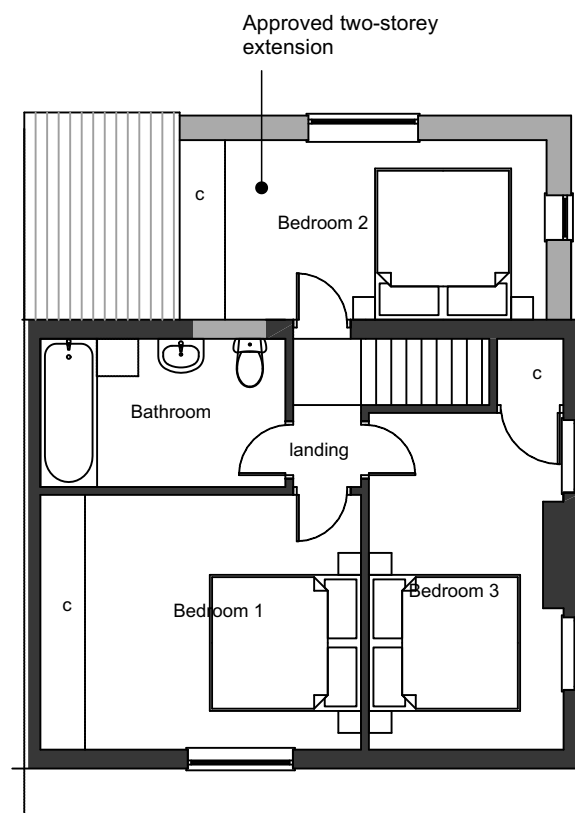
1 Previously approved North Elevation
Scale: 1:100



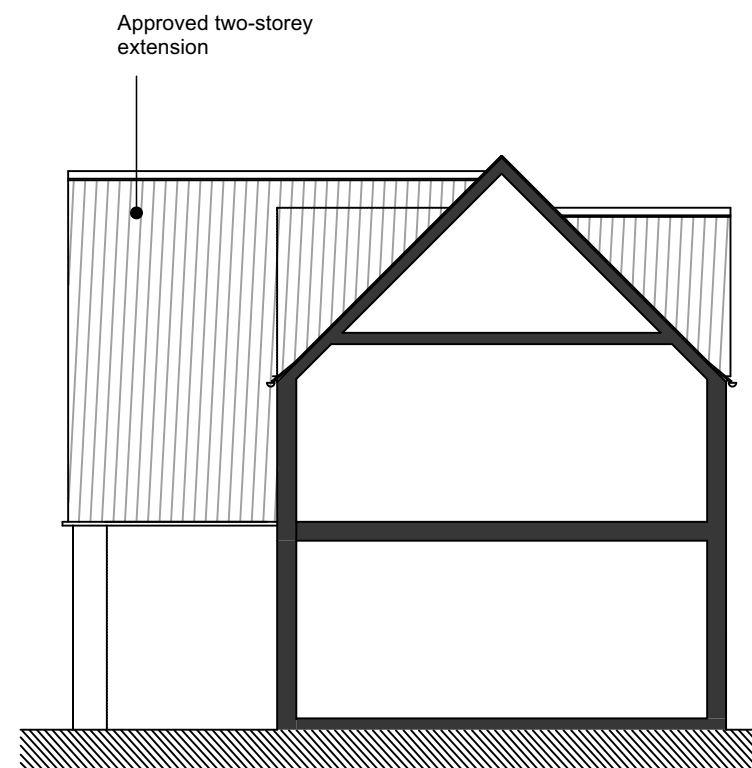
2 Previously approved East Elevation
Scale: 1:100



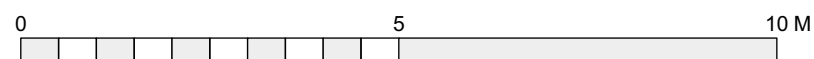
GF Previously approved Ground Floor
Scale: 1:100



FF Previously approved First Floor
Scale: 1:100



3 Previously approved Section
Scale: 1:100



Previously approved application ref.
22/03531/HHD

4 Pear Tree Close

Milton-under-Wychwood
Chipping Norton
OX7 6JX

Drawing Title
Previously Approved Drawings

Project Stage
PLANNING

Scale
1:100 @ A3

Sheet No. Rev.
01_200 P1