



1 - Front (North) Elevation (1:100)



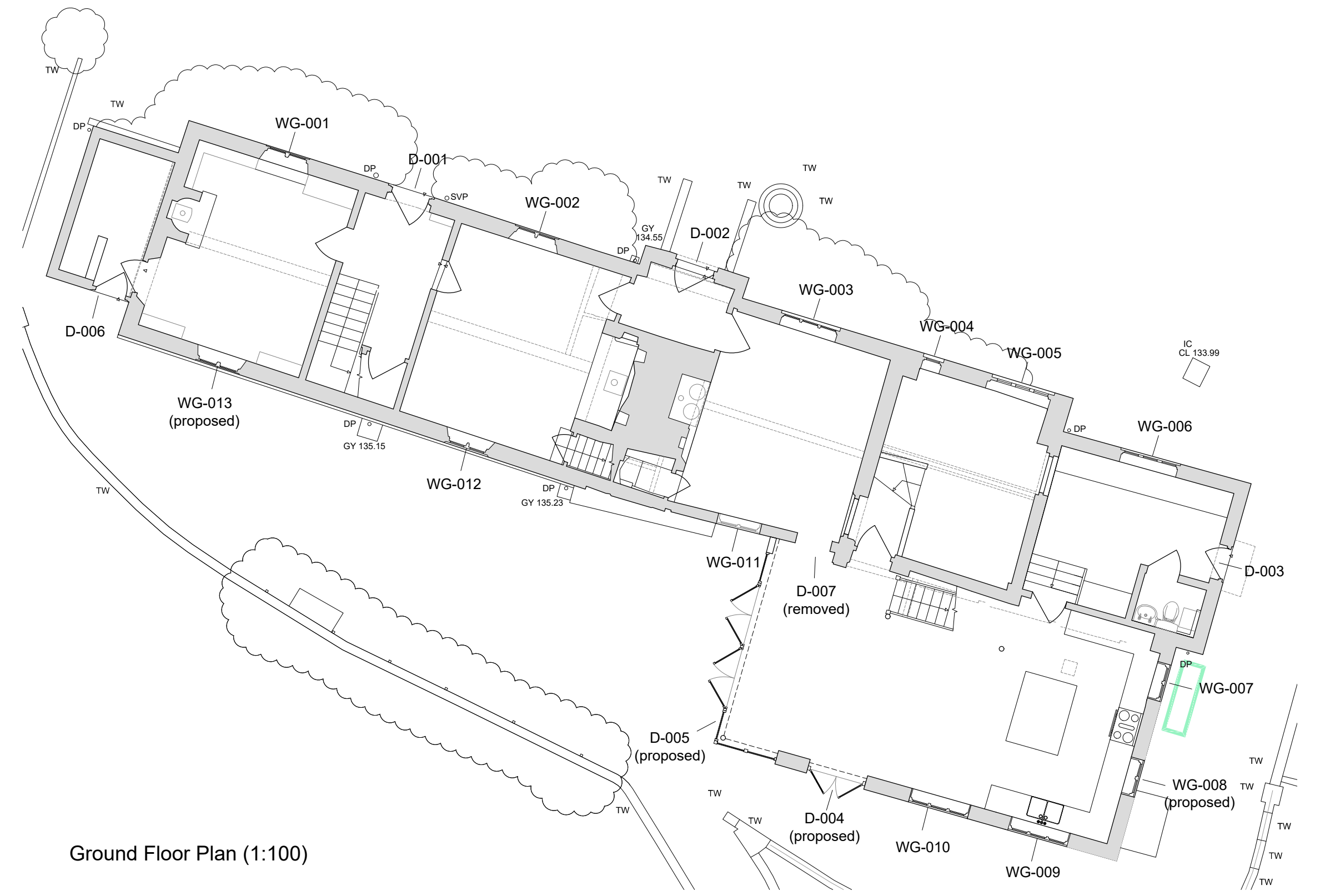
2 - Side (West) Elevation (1:100)



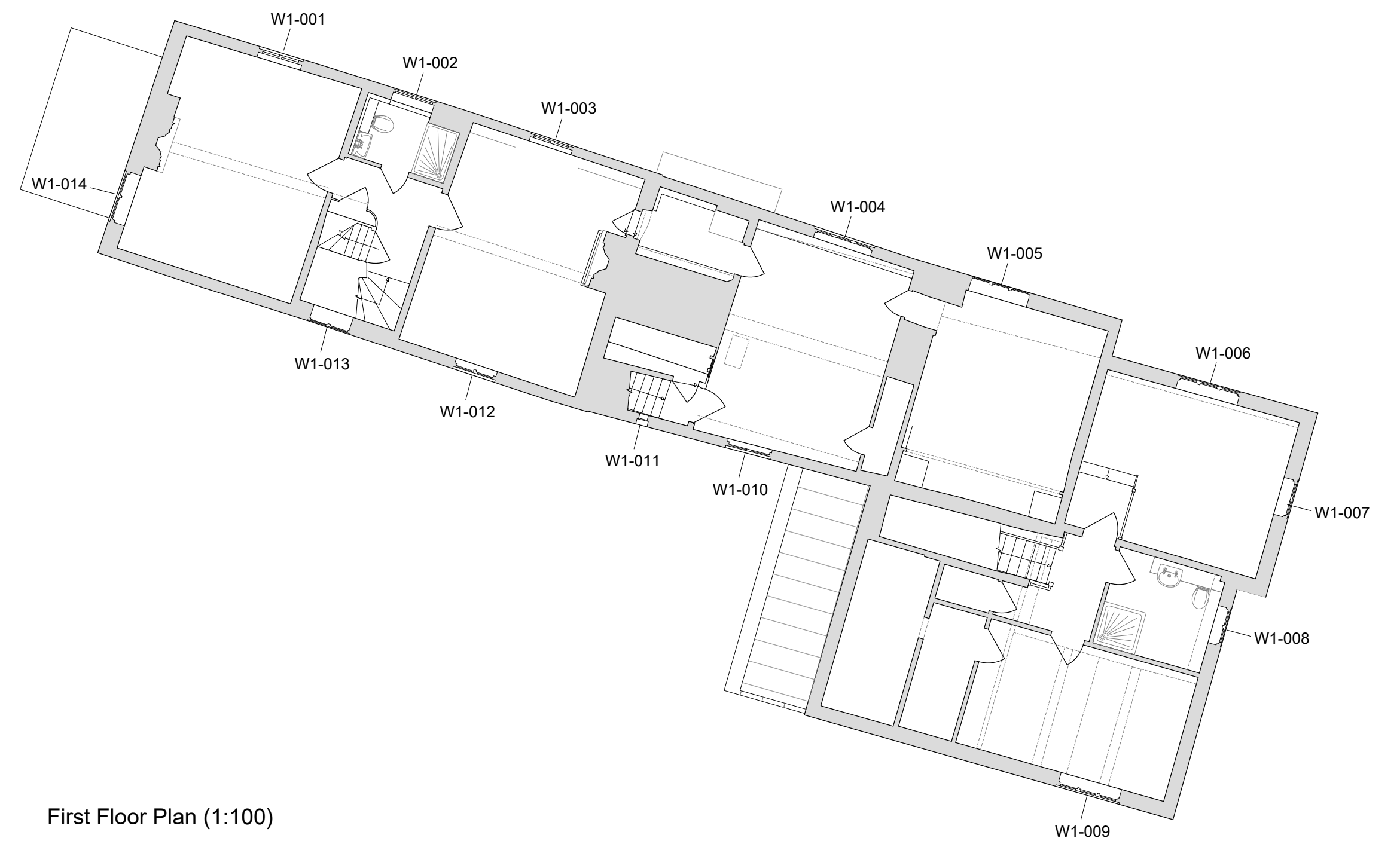
3 - Rear (South) Elevation (1:100)



4 - Side (East) Elevation (1:100)



Ground Floor Plan (1:100)

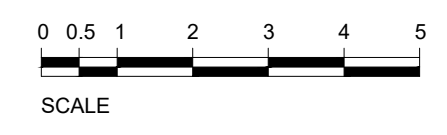


First Floor Plan (1:100)

Window Schedule			
no.	Existing Condition	Proposed	Heritage Comments
WG-001	Modern timber window with single glazing.	Retain timber window frame. Improve draught proofing. Replace glazing with either thin double glazing or vacuum glazing with a handdrawn finish. eg. Histoglass HD10 or Histoglass Mono	altered glazing as identified in the 1984 listing
WG-002	Modern timber window with single glazing. Replaced in 2004 with extension.	Retain timber window frame. Improve draught proofing. Replace glazing with either thin double glazing with a handdrawn finish. eg. Histoglass HD13	
WG-003	Modern timber window with single glazing. Replaced in 2004 with extension.	Retain timber window frame. Improve draught proofing. Replace glazing with either thin double glazing with a handdrawn finish. eg. Histoglass HD13	
WG-004	Modern timber window with single glazing. Replaced in 2004 with extension.	Retain timber window frame. Improve draught proofing. Replace glazing with either thin double glazing with a handdrawn finish. eg. Histoglass HD13	
WG-005	Modern timber window with single glazing. Replaced in 2004 with extension.	Retain timber window frame. Improve draught proofing. Replace glazing with either thin double glazing with a handdrawn finish. eg. Histoglass HD13	
WG-006	New window 2004 with extension. Timber frame single glazing.	Retain timber window frame. Improve draught proofing. Replace glazing with either thin double glazing with a handdrawn finish. eg. Histoglass HD13	
WG-007	New window 2004 with extension. Timber frame single glazing.	Retain timber window frame. Improve draught proofing. Replace glazing with either thin double glazing with a handdrawn finish. eg. Histoglass HD13	
WG-008	n/a	Proposed thin heritage double glazing in timber frame window detailed to match existing. Hand drawn glass finish. eg HistoglassHD13	
WG-009	New window 2004 with extension. Timber frame single glazing.	Retain timber window frame. Improve draught proofing. Replace glazing with either thin double glazing with a handdrawn finish. eg. Histoglass HD13	
WG-010	New window 2004 with extension. Timber frame single glazing.	Retain timber window frame. Improve draught proofing. Replace glazing with either thin double glazing with a handdrawn finish. eg. Histoglass HD13	
WG-011	Modern timber window with single glazing. Replaced in 2004 with extension.	Retain timber window frame. Improve draught proofing. Replace glazing with either thin double glazing with a handdrawn finish. eg. Histoglass HD13	
WG-012	Modern timber window with single glazing. Replaced in 2004 with extension.	Retain timber window frame. Improve draught proofing. Replace glazing with either thin double glazing with a handdrawn finish. eg. Histoglass HD13	
WG-013	n/a	Proposed thin heritage double glazing in timber frame window detailed to match existing. Hand drawn glass finish. eg HistoglassHD13	
W1-001	Modern timber window with single glazing.	Retain timber window frame. Improve draught proofing. Replace glazing with either thin double glazing or vacuum glazing with a handdrawn finish. eg. Histoglass HD10 or Histoglass Mono	altered glazing as identified in the 1984 listing
W1-002	Modern timber window with single glazing.	Retain timber window frame. Improve draught proofing. Replace glazing with either thin double glazing or vacuum glazing with a handdrawn finish. eg. Histoglass HD10 or Histoglass Mono	altered glazing as identified in the 1984 listing
W1-003	Modern timber window with single glazing.	Retain timber window frame. Improve draught proofing. Replace glazing with either thin double glazing or vacuum glazing with a handdrawn finish. eg. Histoglass HD10 or Histoglass Mono	altered glazing as identified in the 1984 listing
W1-004	Modern timber window with single glazing. Replaced in 2004 with extension.	Proposed thin heritage double glazing in timber frame window detailed to match existing. Hand drawn glass finish. eg HistoglassHD13	
W1-005	Timber frame with single glazing. Likely historic fabric and glazing.	Horizontal sliding secondary glazed unit mounted to internal window reveals.	
W1-006	New window 2004 with extension. Timber frame single glazing.	Retain timber window frame. Improve draught proofing. Replace glazing with either thin double glazing with a handdrawn finish. eg. Histoglass HD13	
W1-007	New window 2004 with extension. Timber frame single glazing.	Retain timber window frame. Improve draught proofing. Replace glazing with either thin double glazing with a handdrawn finish. eg. Histoglass HD13	
W1-008	New window 2004 with extension. Timber frame single glazing.	Retain timber window frame. Improve draught proofing. Replace glazing with either thin double glazing with a handdrawn finish. eg. Histoglass HD13	
W1-009	New window 2004 with extension. Timber frame single glazing.	Retain timber window frame. Improve draught proofing. Replace glazing with either thin double glazing with a handdrawn finish. eg. Histoglass HD13	
W1-010	Modern timber window with single glazing. Replaced in 2004 with extension.	Retain timber window frame. Improve draught proofing. Replace glazing with either thin double glazing with a handdrawn finish. eg. Histoglass HD13	
W1-011	Timber frame with single glazing. Likely historic fabric and glazing.	Fixed secondary glazed unit mounted to internal window reveals.	
W1-012	Modern timber window with single glazing.	Retain timber window frame. Improve draught proofing. Replace glazing with either thin double glazing or vacuum glazing with a handdrawn finish. eg. Histoglass HD10 or Histoglass Mono	
W1-013	Modern timber window with single glazing.	Retain timber window frame. Improve draught proofing. Replace glazing with either thin double glazing or vacuum glazing with a handdrawn finish. eg. Histoglass HD10 or Histoglass Mono	
W1-014	Timber frame with single glazing.	Horizontal sliding secondary glazed unit mounted to internal window reveals. Improve draught proofing.	The window is not present in the 1920s photographs of the property. Likely inserted in 1960s with the reuse of an existing window from the demolished rear extension.

Door Schedule		
no.	Existing Condition	Proposed
D-001	Modern Timber raised and fielded door. Replace in 2004 with modern extension	Retained
D-002	Modern Timber raised and fielded door. Replace in 2004 with modern extension	Retained
D-003	New door with 2004 extension	Retained
D-004	n/a	New timber door with with thin double glazed panes with a handdrawn finish. eg. Histoglass HD13
D-005	n/a	New metal frame doors and side lights. Double glazed glass. Frames finished in black.
D-006	Modern timber door with 2004 extension	Retained
D-007	Modern timber door with centre light and cat flap	Door removed

GENERAL NOTES:
 This drawing is the property of BENCHMARK ARCHITECTS & IS NOT to be reproduced other than for the purposes of this project named below without permission.
 DO NOT SCALE from this drawing. All dimensions should be checked and confirmed on site and any discrepancies reported to the architect. Any conflict or discrepancy between this drawing and any other information must also be reported and clarification sought.
 All works are to be carried out in accordance with current Codes of Practice and British Standards unless specifically directed otherwise. It is the design sub-contractors responsibility to ensure that all dimensions and details are appropriate for their installation. This drawing or any comments within should not be mis-construed so as to relieve the sub-contractor of that responsibility.
 All materials and components are to comply with specifications and should achieve all design performance and tolerances stated in specifications.
 HEALTH AND SAFETY INFORMATION
 All works should be carried out by a competent contractor working to an appropriate method statement and paying attention to current and relevant Construction (Design and Management) project documentation including the designers risk assessment.



Date 04.09.2023 Rev Planning Issue (A,H)