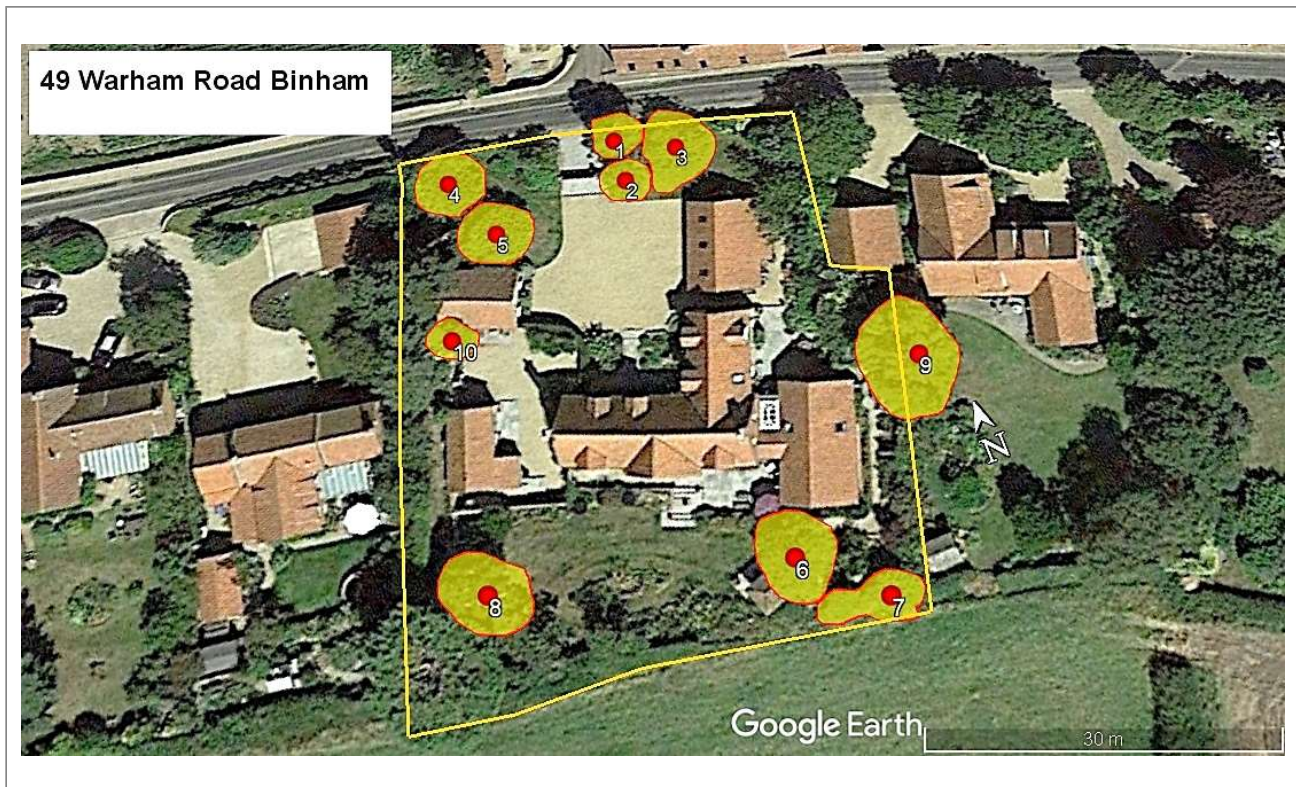


Client

Mrs Wendy Coles
49 Warham Road
Binham
Norfolk
NR21 0DQ

wendycoles@btopenworld.com

SITE PLAN



TREE WORK SPECIFICATION

Tree No 1 Previously reduced Birch tree (12.5m tall) adjacent to the front boundary of the front garden.

Reduce and shape the upper crown, similar to previous reduction. Lower crown not to be reduced or raised to maintain screen. Estimated height after reduction 8m

Tree No 2 Previously reduced Birch tree (13.5m tall) adjacent to the front boundary of the front garden.

Reduce and shape the upper crown, similar to previous reduction. Lower crown not to be reduced or raised to maintain screen. Estimated height after reduction 9m.

Tree No 3 Previously reduced Swedish White Beam tree (8.5m tall and 4m radius) adjacent to the front boundary of the front garden.

Reduce and shape the upper crown, similar to previous reduction. Lower crown not to be reduced or raised to maintain screen. Estimated height after reduction 7m.



T1 & T2



T2 & T3

Tree No 4 Old, outgrown Apple tree (7m tall approximately 3.3m radius) located in the front garden.

Clean out the crown of deadwood crossing and suppressed branches. Selectively thin to improve the crown structure. Tip-reduce the outer branches to form a spreading dome profile (approximately 5.5m high and 2.3m radius).

Tree No 5 Old, outgrown Apple tree (7m tall approximately 3.3m radius) located in the front garden.

Clean out the crown of deadwood crossing and suppressed branches. Selectively thin to improve the crown structure. Tip-reduce the outer branches to form a spreading dome profile (approximately 5.5m high and 2.3m radius).

Tree No 6 Crab Apple located in the back garden (8m tall and 4m radius)

Clean out the crown of deadwood crossing and suppressed branches. Tip-reduce the outer branches to form a spreading dome profile (7m high and 3m radius).



T4



T5



T6

Hedge No 7 Heavily ivy cover section of Sycamore and Hawthorne hedge.

Trim the sides and reduce the height to just above the height of the neighbouring fence.

Tree No 8 Previously reduced Birch tree (14m tall) located on the lawn in the back garden.

Clean out the crown of deadwood crossing and suppressed branches. Reduce and shape the upper crown, similar to previous reduction. Lower crown not to be reduced or raised to maintain screen. Reduce to approximately 9m.

Tree No 9 Birch tree located in the neighbouring garden. The crown hangs over your garden and glass house. Estimated crown radius to the west 6m.

Tip-reduce the overhanging branches back to alternative growth points to allow more light into the garden and glass house.



Hedge No 7



T8



T9

Tree No 10 Ornamental bay tree

Reduce the height to near the previous point of reduction and trim into an ornamental 'egg' shape.

