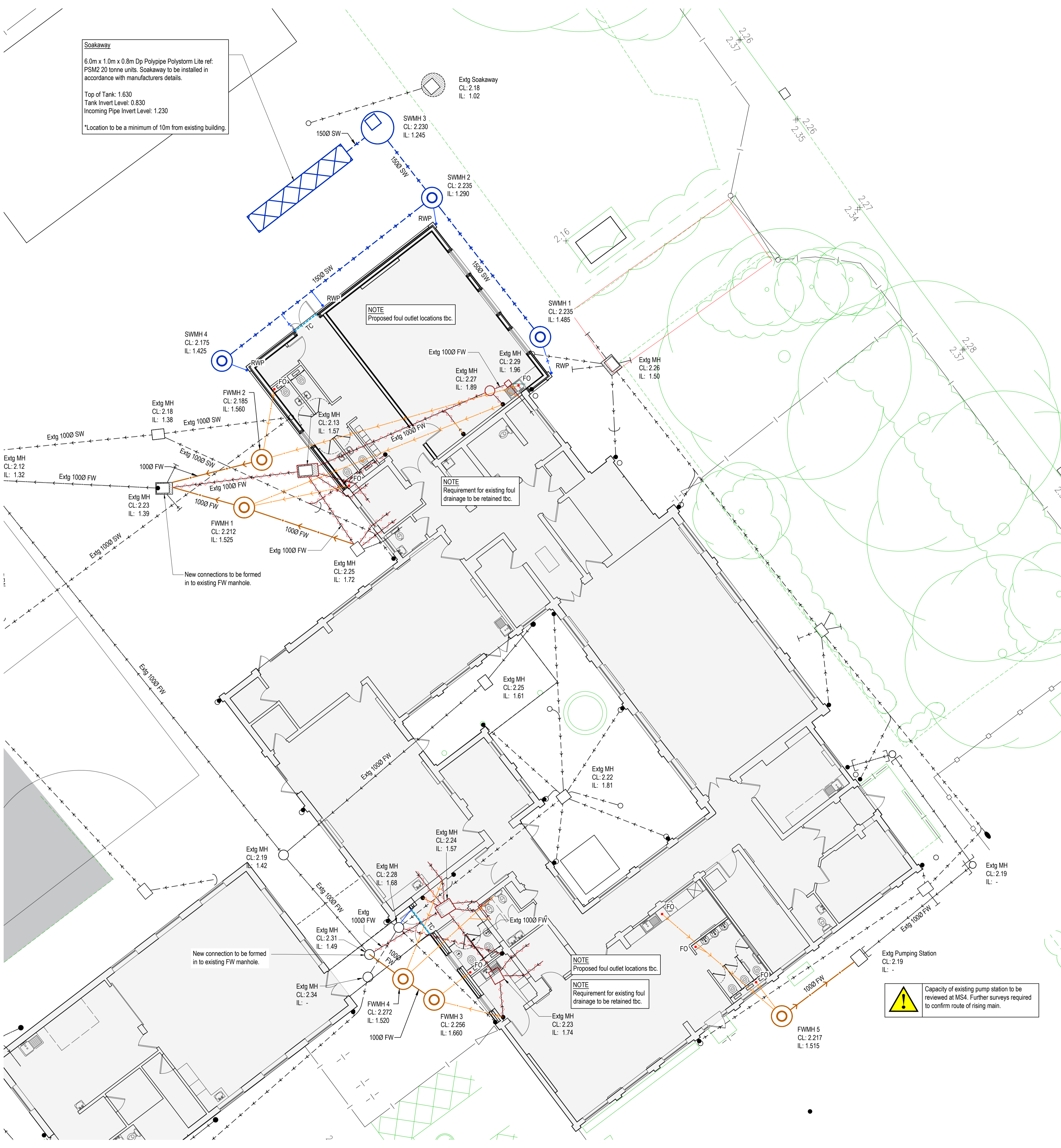


**Soakaway**  
 6.0m x 1.0m x 0.8m Dp Polypipe Polystorm Lite ref: PSM2 20 tonne units. Soakaway to be installed in accordance with manufacturers details.  
 Top of Tank: 1.630  
 Tank Invert Level: 0.830  
 Incoming Pipe Invert Level: 1.230  
 \*Location to be a minimum of 10m from existing building.



### Drainage Legend

- XXXØ SW Proposed primary surface water drainage network.
- XXXØ FW Proposed primary foul water drainage network.
- Existing primary surface water drainage network.
- Existing primary foul water drainage network.
- RWP Proposed rain water pipe with 100mm Ø outlet pipe at minimum 1:100 gradient U.N.O.
- TC Proposed Threshold drainage channel with 150mm Ø outlet pipe. Ref: Offset Slot Drain 105 with Ø10 base channel, by Marshalls or similar.
- FO Proposed foul outlet with 100mm Ø outlet pipe at minimum 1:40 gradient.
- Existing sewer to be broken out.
- Proposed soakaway. Refer to plan for details.

#### NEW SURFACE WATER MANHOLE SCHEDULE

Note: Levels to be confirmed. Levels to Ordnance Survey Datum.

MANHOLE REF	COVER LEVEL (m) approx	INVERT LEVEL (m)	MANHOLE TYPE	COVER & FRAME	NOTES	BACKDROP/CATCHPIT
SWMH 1	2.235	1.485	450 dia Type D (B.19a)	Class B125	-	-
SWMH 2	2.235	1.290	450 dia Type D (B.19a)	Class B125	-	-
SWMH 3	2.230	1.245	1,350 dia Type C (B.15)	Class B125	-	Catchpit
SWMH 4	2.175	1.425	450 dia Type D (B.19a)	Class B125	-	-

#### NEW FOUL WATER MANHOLE SCHEDULE

Note: Levels to be confirmed. Levels to Ordnance Survey Datum.

MANHOLE REF	COVER LEVEL (m) approx	INVERT LEVEL (m)	MANHOLE TYPE	COVER & FRAME	NOTES	BACKDROP/CATCHPIT
FWMH 1	2.212	1.525	450 dia Type D (B.19a)	Class B125	-	-
FWMH 2	2.185	1.560	450 dia Type D (B.19a)	Class B125	-	-
FWMH 3	2.256	1.660	450 dia Type D (B.19a)	Class B125	-	-
FWMH 4	2.272	1.520	450 dia Type D (B.19a)	Class B125	-	-
FWMH 5	2.217	1.515	450 dia Type D (B.19a)	Class B125	-	-

- ### NOTES:
- This drawing is to be read in conjunction with all Peter Dann Consulting Engineers, Architects, MEP Engineers and Specialists drawings along with all relevant specifications.
  - All gridlines, building lines, etc. are to be set out in accordance with the relevant Architects drawings. Any discrepancies between the information given by the Engineer and that provided by others must be referred to the Architect before work proceeds.
  - Dimensions are NOT to be scaled from this drawing. If in doubt ask. Dimensions marked \* are subject to confirmation by site measurement before construction commences.
  - All proprietary fixings shall be installed in accordance with the manufacturer's recommendations.
  - The Contractor shall comply with the health and safety requirements as set out by the CDM Regulations, THE HEALTH AND SAFETY EXECUTIVE.
  - All works are to be undertaken in accordance with the Building Regulations and latest relevant British Standards.
  - All construction products are to be CE marked in accordance with the Construction Products Regulation (EU) No. 305/2011.



**CONSTRUCTION** - It is considered that the proposed works are within the scope of a competent contractor and as such no unusual hazards have been identified, with the exception of the following:-

**LIFETIME/USAGE** - The building has no exceptional structural features that present a hazard to potential users, with the exception of the following:-

**DECOMMISSIONING/DEMOLITION** - There are no unusual structural aspects to this building that require highlighting in the event that the building is demolished, with the exception of the following:-

**RECORD INFORMATION** - The record drawings / operating manual for the building should be thoroughly studied and its implications assessed by the demolition contractor.

REV	DATE	OWN	CHK	DESCRIPTION
001	11.05.23	SM	JB	Initial preliminary issue

AMENDMENTS

peter dann consulting engineers  
 peter dann limited | newtonhouse  
 cambridge road | barton | cambridge | CB23 7WJ  
 t: 01223 264688 www.peterdann.com info@peterdann.com

JOB TITLE  
**Townley Primary School**

DRAWING TITLE  
**Proposed Drainage Layout**

DATE	DRAWN	CHECKED	SCALE	
May '23	SM	JB	1:100	@A1

DRAWING STATUS  
**PRELIMINARY**

JOB/DRG No.  
**11-1477\_ZZ-DR-C-50200 P01**

STATUS CODE  
 S0  
 REV.

© Peter Dann Ltd. All rights reserved.