

# Jeakins Weir

## Construction Management Plan

Revision A – May 2023

### Townley Primary School

May 2023

*(i) Detailed Work Programme/Timetable*

A Copy of our draft construction programme for the works is included within a separate document which has been included within this document issue. This programme outlines the key commencement and completion dates for various items in the project. At present the works are scheduled to commence November 2023 and scheduled for completion August 2024, subject to pre-commencement conditions.

All site activities will take place within the designated working hours of between 8.00am and 5.30pm Monday to Friday and 8:00am to 1:00pm on Saturdays, with no works on Sundays, Bank or Public holidays.

We will ensure that vehicles and delivery's do not enter or leave site between the hours of 8:00am to 9:15am and 14:45pm to 16:00pm Mondays to Fridays during term time.

*(ii) Detailed car parking plan*

During the Early stages of the project, Parking for contractors' vehicles will be on site within the site compound.

Access to the site compound will be from Crown Road, we will apply for a temporary vehicle crossover from Highways to facilitate this temporary access. The access will be reinstated upon the completion of the works.

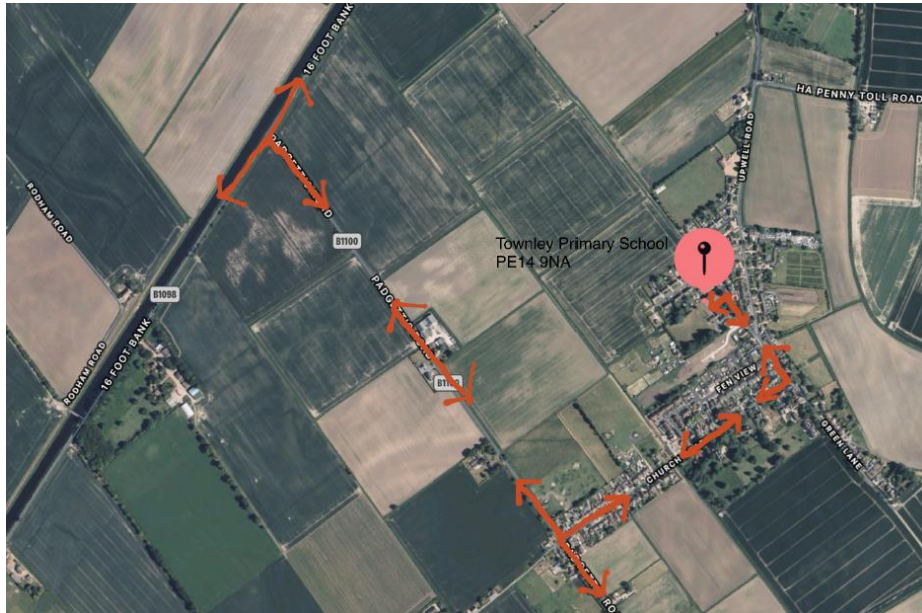
Car Sharing will be encouraged, to minimise the number of Vehicles on site

Signage will be installed to the adjacent highway stating that no contractors Vehicles are to be parked on the Highway.

The above methodology will be relayed to our contractors through there contract to carry out the works, the above information will again be relayed to them during our pre start meetings with the contractor and again through our site manager during our site induction process once operatives commence on site.

### *(iii) Construction Traffic routing and pre-journey information*

The below access route will form the requirements for all vehicles accessing and leaving the site. The access route information will be supplied to all our suppliers, Sub contractors and visitors to the site within our purchase orders and will be issued prior to their commencement on site. Access information will also be discussed with our contractors during an initial meeting, the information will also be relayed to individuals when they are inducted onto site. Temporary signage and arrows will be positioned at Junctions on the adjacent roads to assist Vehicles in locating and leaving the site. Examples of types of signage to be used are contained within section (vi).



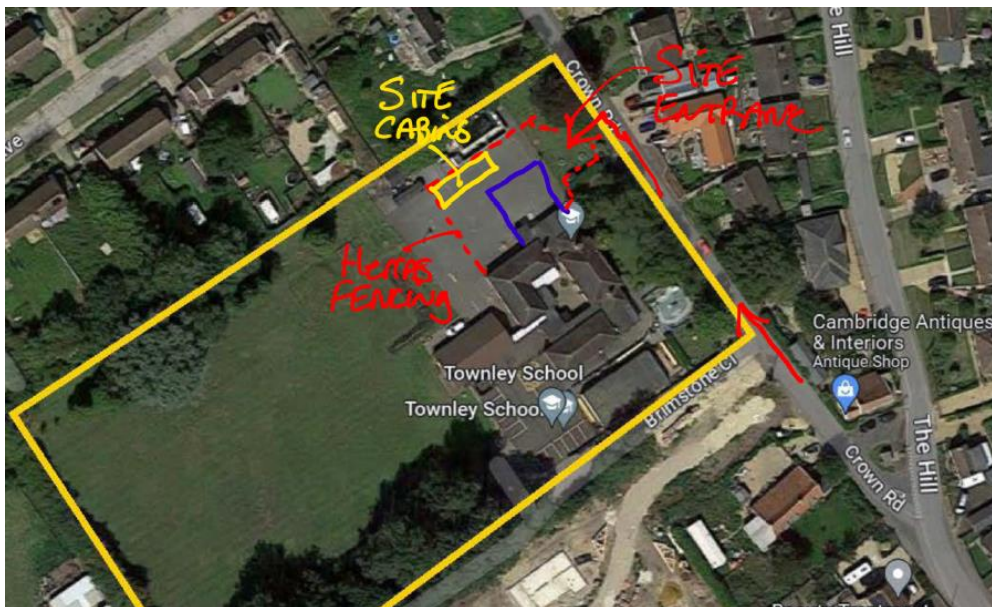
As outlined above, information will be provided to all suppliers, sub-contractors and visitors who will attend site. Also, as part of our order a copy of the site Rules will be issued which indicates the delivery restrictions and timings for deliveries for vehicles entering and leaving the site as well as site specific information. A copy of the Site rules is listed within a separate document which has been issued as part of this document.

*(iv) Site layout plan*

The below site layout plan indicates where our Welfare, parking and access on and off the site is located. It is our intention to setup an access route to and from the site, indicated above in (iii), utilising a temporary access but across the School Land an application to Highways will be made for a temporary vehicle crossover. The temporary access will provide adequate visibility splays as shown below.



Delivery Vehicles will enter the site and will wait within the site boundary to be off loaded. Deliveries will be planned so that they are not queuing on the adjacent road to the site. The size of Vehicles will also be restricted to Rigid Type. All vehicles will be guided in and out of the site using a banksman.



Site plan

- *Site Operatives*

Our site operational staff will be provided with welfare facilities. A demarcated pedestrian access and routes around the site will be provided to ensure that vehicular and pedestrian traffic are separated.

- *Loading/unloading Plant and Materials*

Most of the materials required for the construction will be heavy and will be offloaded with a site forklift, within our site compound, gates will be kept closed to the site at all times, the materials will be delivered on rigid Lorries and stored either directly in the building (e.g. plasterboard and suspended ceiling tiles) or in our site compound until they are required to be incorporated within the building.

We will provide a secure container for material storage within our compound.

A forklift truck will be provided to unload Lorries and to distribute materials around the site as required.

As mentioned above, we will confirm timings of deliveries and will ensure that our suppliers are aware of the site rules regarding deliveries.

We will provide a Banks man to assist vehicular movements on, around and off the site.

- *Site Operatives and Visitors*

There will be limited parking on site and within the site compound, Car sharing will be encouraged through early engagement with the Supply chain. Alternative Parking will be away from site for vehicles associated with the development, Parking will be in a clear area and not on the verges, and parking will need to be legal. This will be relayed within our site rules sent to all parties prior to attending site and again during our induction process

- (v) *Debris management and the control of dust and dirt*

We do follow the principles of 'prevention being better than the cure'. We will therefore set out our stall to ensure that we plan the works to keep the creation of mud on site to a minimum. As the ground works are minimal and we are fortunate enough to load all materials onto hard standing within our site compound and off of the adopted Highway, the roads will be monitored and mechanically swept if required.

The site manager will inspect the adjacent highways daily and arrange for the roads to be mechanically swept

We recognise the importance of keeping our sites clean and tidy and well set out. A clean site is also a safe site, and it ensures that no rubbish is blown into neighbouring property. We will ensure that road sweepers are provided as and when necessary. Where required, we will have hoses available always to ensure that we damp down all dust generated by the building works. This will include the external works activities as well as the cutting of blocks and the preparation of mortar.

All vehicles entering and leaving the site will be sheeted to prevent spillage onto the adjacent Highways

Or Banksman will visually inspect the vehicles before they leave the site and clean if required to ensure that all vehicles and Wheels are clean prior to vehicles departing the site. A wheel washing facility will be used if required in the form of a bowser mounted jet wash. This will be located between the boundary of the construction site and the School areas.

*(vi) Public impact protection*

The adjacent roads and footpaths will have a schedule of photographs taken to record its condition, upon completion the road and footpath will be inspected, and any making good carried out in accordance with Highways regulations.

. As indicated in (ii) above traffic routes leading to the site will be signed to aid with location of the site for delivery vehicles.

- The approach to the site will have adequate signage positioned to warn other road users that they are approaching a construction site.

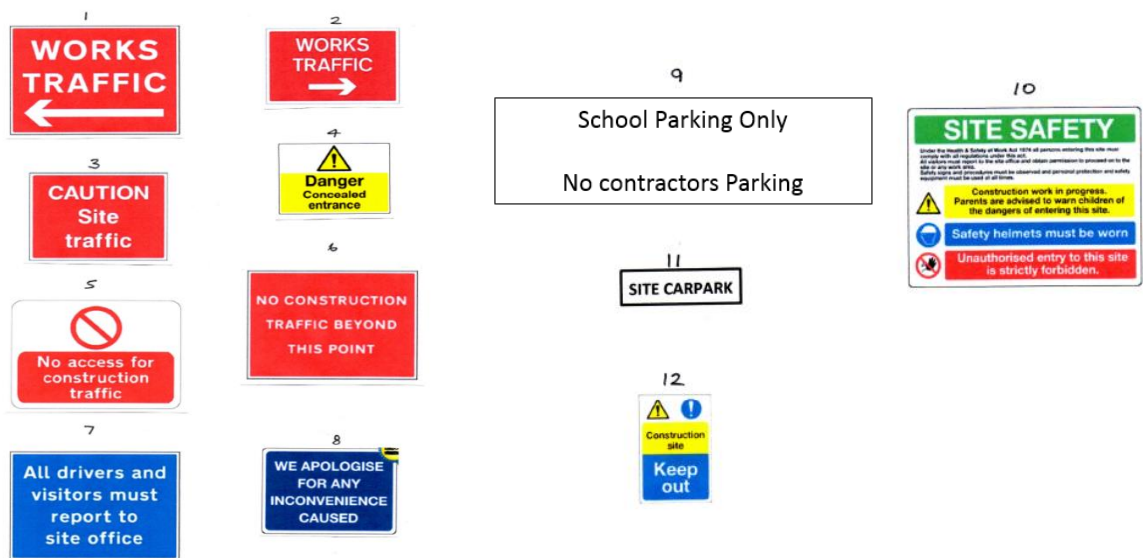
The site access points are marked on the enclosed sketch under (iv) of this report and we confirm our intention to access the site from Crown Road. We will ensure this access is provided and maintained.

We have therefore considered our demarcation and access.

- Please note that where required, we will erect hoarding with viewing panels.
- Materials will be securely stored in the main compound area.
- We will provide clearly demarcated pedestrian access onto the site, which will be separate from the vehicular traffic onto the site.

The above facilities will remain in place throughout the Works.

Typical signage to be used on approach to the site



*(Vii) Emergency vehicles*

Please also see the above sketch of the site compound layout. Emergency vehicles will gain access to our site compound from Crown Road – this access for emergency vehicles will remain clear throughout the works.

We will ensure always that Crown Road and the School buildings remains clear for emergency vehicles – and indeed, for all residential vehicles as well.

*(Viii) Storage of plant and materials*

Please see our response to (iv) above. Please note that most of the heavy materials will be delivered direct to the building works and not to our site compound area. Lighter and day to day materials and plant we will be stored in a secure container in our site compound and external materials will be stored in designated areas again within our site compound.

No materials will be stored in the Root Protection Area of any tree, nor will any materials be stored outside of the site boundary.

*(ix) Protection of Mammals*

To ensure Mammals are not harmed during construction, any open trenches will be left with a ramp to ensure mammals can escape from the trenches, any pipework greater than 150mm diameter will be capped and water butts covered. These methods will be in place at the end of each working day and over weekends

**This plan will be reviewed, updated and agreed on a regular basis as the works progress and move through the different phases of works, these reviews will be carried out with input from the Employers agent and the School**