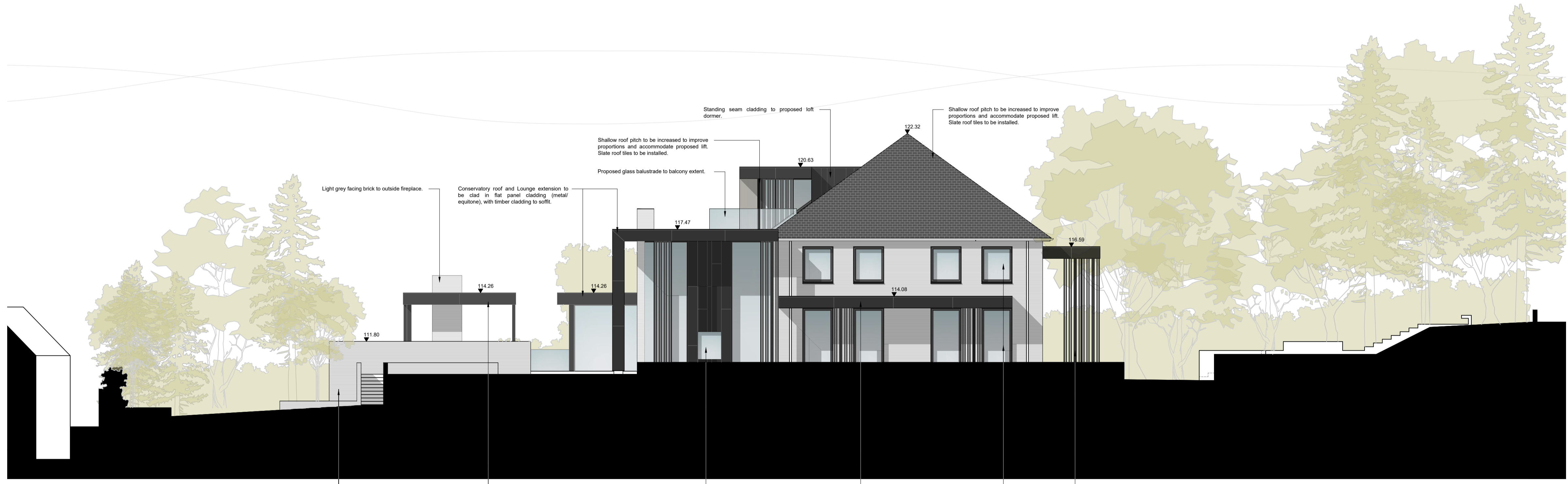


proposed east elevation

All windows to be re-shaped and installed with metal framed double glazed windows with ppc finish, colour black.
 Proposed insulated metal door with fixed side lights.
 Proposed metal shading/ privacy screen, with ppc finish, colour black.
 Side extension roof to be clad in flat panel cladding (metal/ equitone), with timber cladding to soffit.
 Proposed insulated metal garage door with ppc finish, colour black.



proposed south elevation

Proposed light grey facing brick to garage and podium balustrade.
 Podium canopy to be clad in flat panel cladding (metal/ equitone), with timber cladding to soffit.
 Glazed dual aspect fireplace with standing seam clad surround.
 Side canopy to be clad in flat panel cladding (metal/ equitone), with timber cladding to soffit.
 All windows to be re-shaped and installed with metal framed double glazed windows with ppc finish, colour black.
 Proposed double height entrance canopy clad in flat panel cladding (metal/ equitone), with timber cladding to soffit. Metal shading/ privacy screens to provide support, with ppc finish, colour black.

Rev.	Date	Issue	By

- Copyright of STUDIOGÖTZ.
- Do not scale from drawing.
- All dimensions are to be checked on site.
- Any discrepancies are to be reported immediately to the Architect or Main Contractor.

Client
-

Project
Haddon House, St. John's Hill, Shenstone, WS14 0JB

Drawing
Proposed Elevations Sheet 1

Project No.	Drawing No.	Issue	Status
1236	120	-	P

Issue date: June 2023
 Drawn by: VG
 Checked by: -
 Scale: 1/125 @ A1 or 1/250 @ A3