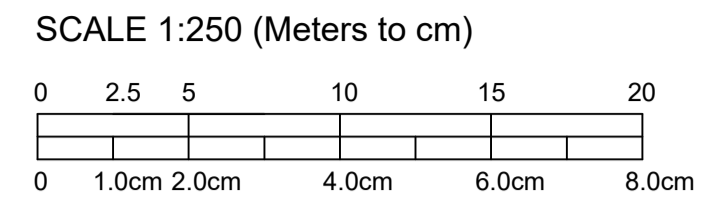


NOTE: THIS DRAWING IS "AS BUILT" BY OTHERS. WITH AMENDMENTS FOLLOWING TWH MEETING WITH TDC/ ALRESFORD PARISH COUNCIL. THIS REPLACES CSA HARD/SOFT LANDSCAPE DRAWINGS FOR POS AREAS ONLY

ORIGINAL LANDSCAPE PROPOSALS SHOWN ON CSA DRAWINGS CSA/2047/134-138



ALLOTMENTS TO BE SET OUT IN ACCORDANCE WITH LAYOUT AGREED WITH ALRESFORD PARISH COUNCIL

ORIGINAL TREE POSITIONS HAVE BEEN SET BY PREVIOUS CONSULTANTS AS BEING SUITABLE FOR LOCATION. NEW TREE POSITIONS WITHIN POS HAVE BEEN CHECKED AGAINST NHBC PN 4.2 (2023) TABLE 5 COLUMN B

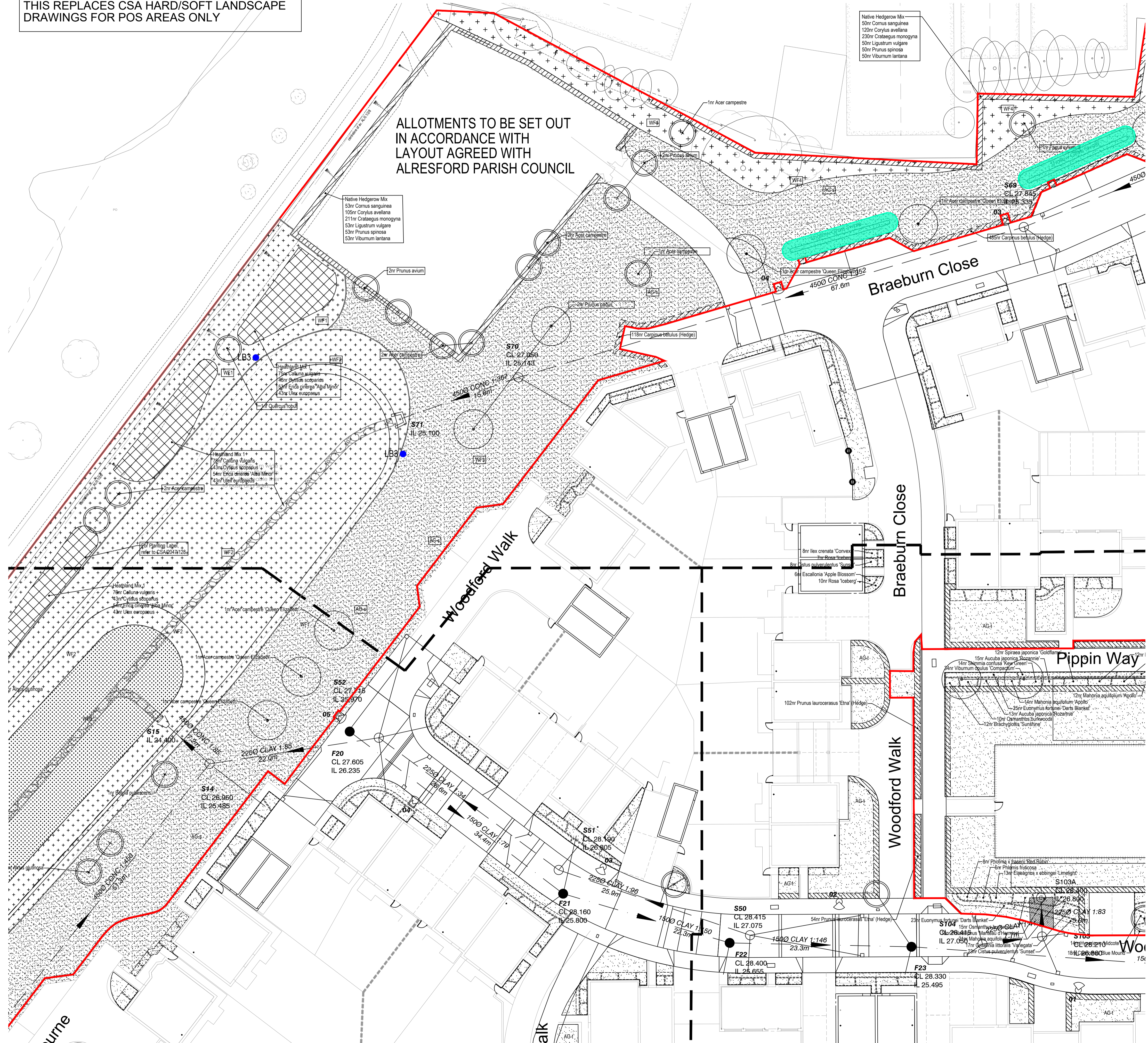
NOTE: ALL TREES SET WITHIN 3.0M OF HIGHWAY BOUNDARY TO HAVE ROOT BARRIER INSTALLED AT HIGHWAY BOUNDARY

NOTE: ALL TREES, HEDGES AND SHRUBS IN PRIVATE AREAS ARE STILL SHOWN ON APPROVED DRAWINGS CSA- 2047-134D-138D

**LEGEND**

- APPLICATION BOUNDARY
- EXISTING TREES / VEGETATION
- TREES / VEGETATION REMOVED
- Softworks**
- WOODLAND MIX
- HEATHLAND MIX
- SEMI-MATURE TREE
- EXTRA HEAVY STANDARD TREE
- STANDARD TREE
- ORNAMENTAL HEDGE PLANTING  
NOTE: Managed at 1.5M high in POS
- NATIVE HEDGE PLANTING  
NOTE: Managed at 1.5M high in POS
- ORNAMENTAL SHRUB / HERBACEOUS / GRASS PLANTING
- CLIMBING SHRUB PLANTING
- AMENITY GRASS SEEDING - 'A22 (Low Maintenance) seed mix by Geminal Seeds Ltd or equal and approved. 50g / m2, overseed rate, 20g / m2.
- AMENITY GRASS TURF - 'Medallion' turf by Rolawn or equal and approved.
- WILDFLOWER MEADOW MIX - 'WF12 Heavy Clay Soils' by Geminal Seeds Ltd or equal and approved. 5g / m2
- WILDFLOWER MEADOW MIX - 'RE12 Drought Land (U16 Grassland)' by Geminal Seeds Ltd or equal and approved. 5g / m2
- WILDFLOWER MEADOW MIX - 'RE3 River Floodplain / Water Meadow (MG8 Grassland)' by Geminal Seeds Ltd or equal and approved. 5g / m2
- PUBLIC OPEN SPACE BOUNDARY
- LITTER BIN  
Woodland timber bin with lid (Streetmaster Ltd 110L capacity 25x50mm slats european oak construction galvanised liner, root fixed into concrete footing or equal approved)
- DOG BIN  
Metal Fido 50 dog waste bin by Glasdon Ltd. Deep green colour. Root fixed or equal and approved
- LIFE BUOY  
To be positioned on site as shown on outer edge of attenuation fence

Notes:-  
1.) For Planting Specification refer to 22.5293.05  
2.) For Planting Schedule refer to 22.5293.02



**Andrew Hastings. Landscape Consultants Ltd.**  
Chartered Landscape Architects

**Landscape Institute**  
Registered practice

The Fairways, 9 Fairfield, Chase Road, Hare Green, Great Bromby, Essex. CO7 7UF  
Tel: 01206 252333  
E Mail: [info@andrewhastingslandscapeconsultants.co.uk](mailto:info@andrewhastingslandscapeconsultants.co.uk)  
Web: [www.andrewhastingslandscapeconsultants.co.uk](http://www.andrewhastingslandscapeconsultants.co.uk)

**PLANNING**

**TAYLOR WIMPEY.**

**COCKAYNES LANE, ALRESFORD, ESSEX.**

**LANDSCAPE INSPECTION 09.07.22 (SHEET 3 of 6)**

SCALE	DATE	DRAWN	CHECKED	DRAWING NUMBER
1:250@A1	01.09.22	CB	AH	22.5293.12

No dimensions are to be scaled from this drawing. All written dimensions to be checked by the contractor. Discrepancies notified immediately to this consultant.