

THIS LAYOUT HAS BEEN PREPARED WITHOUT THE BENEFIT OF A FULL UNDERGROUND AND OVERGROUND SERVICES SURVEY AND MAY BE SUBJECT TO CHANGE IF SERVICES ARE FOUND SUBSEQUENTLY. IF FULL ACCESS TO ALL BOUNDARIES WAS NOT POSSIBLE, FINAL DIMENSIONS TO BOUNDARIES & LEVELS WILL BE SUBJECT TO FURTHER CONFIRMATION

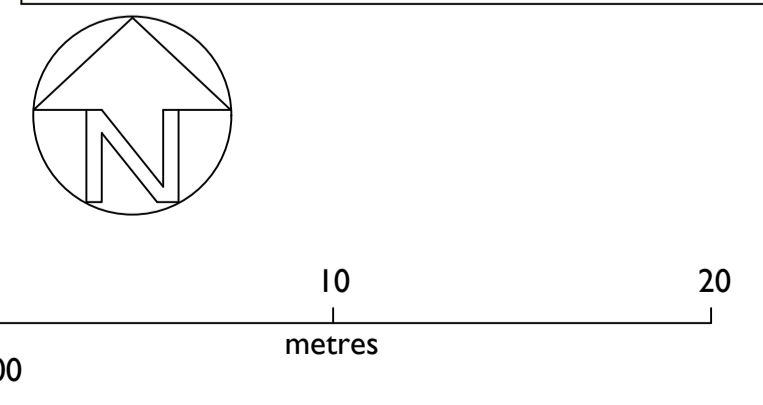
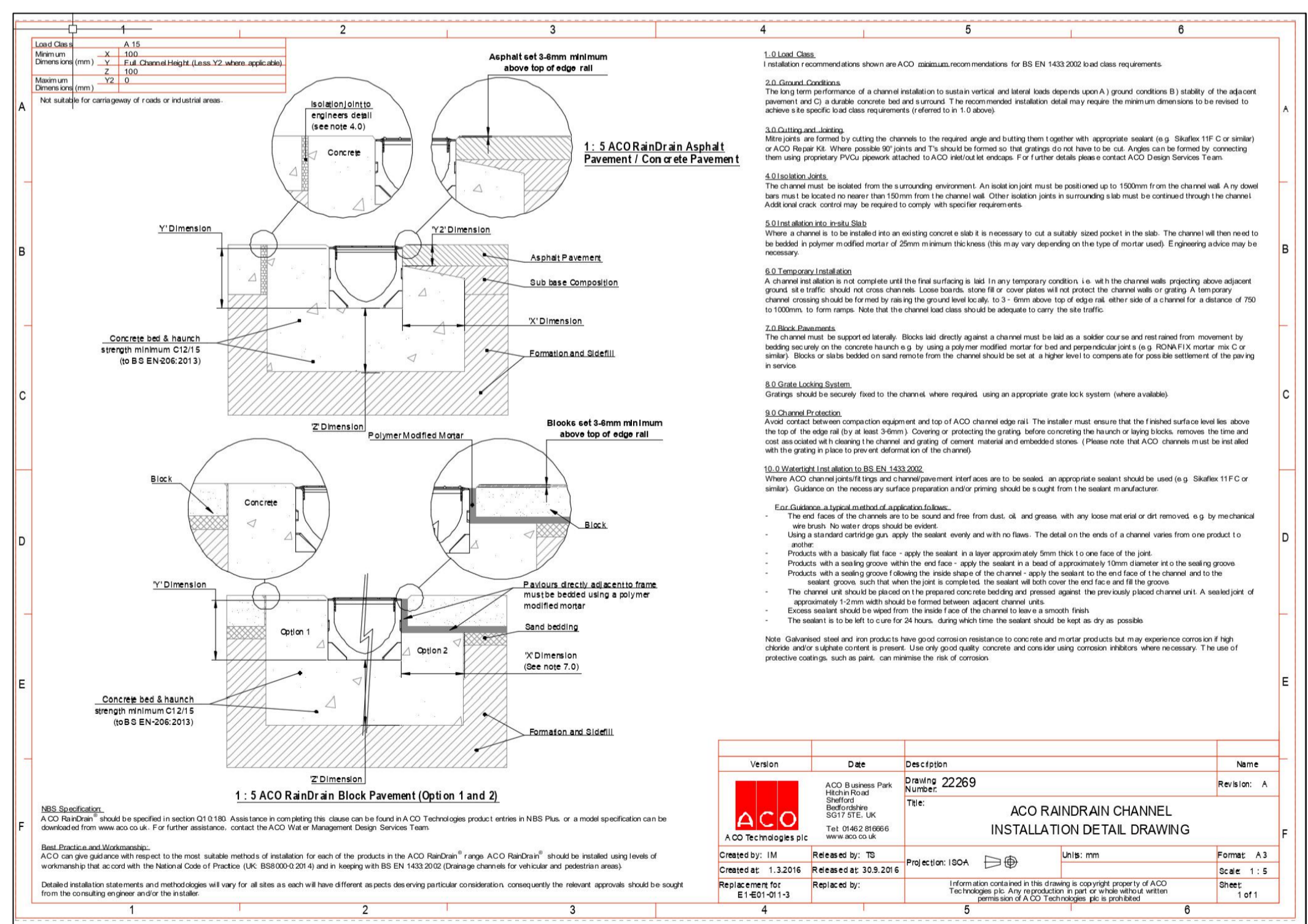
TREE PLANTING SCHEDULE				
TREE MIX (as necessary)				
SPECIES	DENSITY	AGE	ROOT	HEIGHT
2No. Field Maple (Acer caespitose)	1.5m c/s	1+1 or 1/1	BR	60-80cm
3No. Weeping Flowering Crab Apple (Malus 'Sun Rival')	1.5m c/s	1+1 or 1/1	BR	60-80cm
3No. Silver Birch (Betula pendula)	1.5m c/s	1+1 or 1/1	BR	60-80cm

TYPICAL SHRUBS & BORDER PLANTING SCHEDULE	
(mix as necessary)	
SPECIES	
Lanlum Maculatum (White Nancy)	
Prunus Pink Perfection (Flowering Cherry)	
Prunus Accolade (Flowering Cherry)	
Photinia (Christmas Berry / Red Robin)	
Buddleja lindleyana (Butterfly Bush)	
Rhododendron 'Purple Splender'	
Hydrangea involucrata 'Hortensis' (hydrangea)	
Hostas	
Salvia 'Purple Majesty'	
'Hardy' Lavender	
Rosemary	
Griselinia littoralis	
Mahonia Japonica	

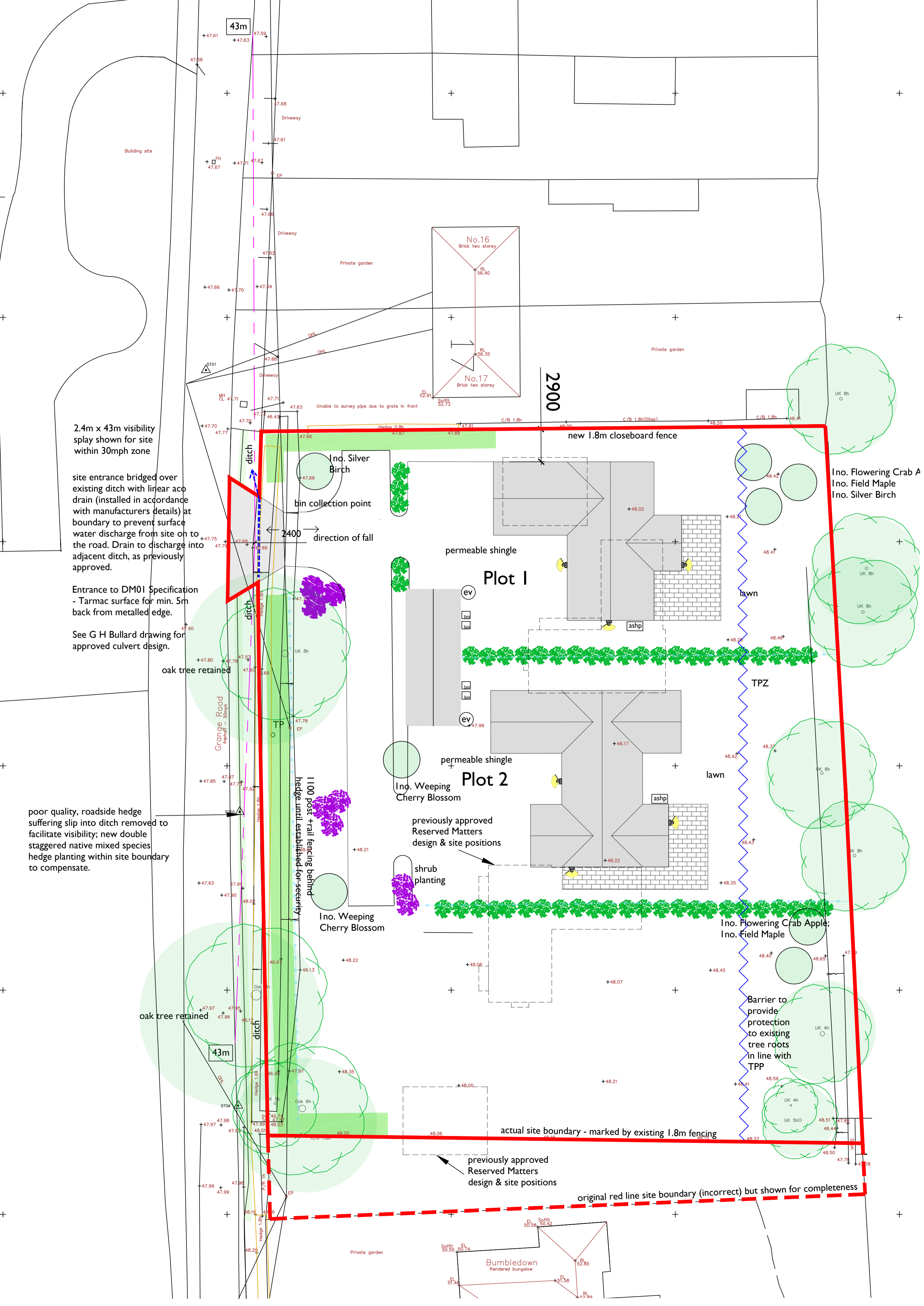
HEDGE PLANTING SCHEDULE				
HEDGEROW MIX (as necessary)				
SPECIES	DENSITY	AGE	ROOT	HEIGHT
30 X Blackthorn (Prunus spinosa)	0.45m	1+1 or 1/1	BR	40-60cm
30% Hawthorn (Crataegus monogyna)	0.45m	1+1 or 1/1	BR	40-60cm
10% Guelder Rose (Viburnum opulus)	0.45m	1+1 or 1/1	BR	40-60cm
10% Dog Rose (Rosa Canina)	0.45m	1+1 or 1/1	BR	20-30cm
5% Wild Honeysuckle (Lonicera periclymenum)	0.45m	1+1 or 1/1	BR	20-30cm
5% Holly (Ilex aquifolium)	0.45m	1+1 or 1/1	CG-31	40-60cm
10% Hazel (Corylus avellana)	0.45m	1+1 or 1/1	BR	40-60cm

TYPICAL SPECIFICATION TABLE - minimum depth shown		
SURFACE	PRIVATE DRIVEWAY	ACCESS ROAD
BINDER	25mm	30mm
SUB-BASE	50mm	70mm
DIG DEPTH	150mm	225mm
	225mm	325mm

- KEY**
- 1800 C/Boarded Fence
  - 1000 Post + Rail Fence
  - Proposed Trees
  - Proposed Native Hedging
  - Proposed Shrubs + Borders
  - Tarmacadam Finish
  - Paving
  - Narrow Beam Downlight
  - Air Source Heat Pump
  - Electric Vehicle Charge Point



**BLOCK PLAN**



**LANDSCAPING**  
Pre-Planting  
Make sure that the sub-soil is not over compacted after completion of the build.  
If this is the case the problem should be alleviated with the use of a deep plough or subsoiler. This action should go down to a minimum depth of 600mm to allow drainage.

**During Planting**  
Bare Root Plants  
The roots of all bare rooted plants should be kept covered at all times during the planting phase. If left unprotected - even for a few minutes the plant may be killed.

**Standard Trees**  
Where standard trees are being planted it is expected that these will not exceed 1.8m in height. These should be planted no deeper than the top level of the container. The tree must also be tied to a 300mm max wooden stake.

**Planting Aids**  
There are various materials that have shown in the past that can assist in the successful establishment for a great proportion of plants in a landscape scheme. These include:  
Plastic Tubes to place on small trees to protect and help to grow. Various types of planting mats to reduce competition for nutrients from grass, these can dramatically improve growth rates.  
Shrub beds should have mulched organic material mixed into the soil bed to a min of 150mm, materials such as peat, shredded bark and wood chippings are ideal.

**POST PLANTING**  
The following operations are essential for the successful establishment of any landscaping. Provision of these methods is essential for at least five seasons after the initial planting.

**Weed Control**  
Should be undertaken at least twice yearly for the season after planting. It is most important on shrub beds to keep unwanted grass and pest vegetation to a minimum. In addition trees or shrubs planted in a grass area should always be kept clear from an area of at least half a metre from the trunk. Using much mats greatly reduces the need to carry out weeding and also aids growth speed.

**Watering**  
The most common way in which lack of care causes the death of plants is neglect of watering in the first summer season. At least five waterings a month are needed in the warm dry spell from June-August, exceptions must be made if the summer is wet or too dry.

**Replacement of Dead Plants**  
If the above pre-planting, planting and post planting guides are adhered to, replacing plants in the first two seasons would likely be unnecessary. Normally, 5 to 10% of plants will need replacing during the first two years following planting, although by using container grown plants and increasing watering schedules this can be cut to virtually zero.

**HEDGE PLANTING**  
Mixed species hedge to be planted where indicated or where needed to augment existing boundary hedges.

**Preparation**  
Ground to be thoroughly de-compacted by hand prior to planting.

**Stock**  
see specification table

**Density**  
Double staggered row at 450mm centres.

**Support & protection**  
Protection against rabbits and deer damage - individual Tubex tree shelters of an appropriate size, staked and secured to incorporate rabbit wire at base.

**Establishment**  
Planting to take place next winter (November onwards).  
For two years after planting, maintain an area of 15qm weed-free around each new plant, either by hand or application of suitable herbicide.  
Irrigation in the first year, depending on weather conditions.

**Maintenance**  
Pruning of tips on planting and future pruning, depending upon growth.  
Any trees that die or become diseased within 5 years of planting to be replaced to the above specification.

B. 29.08.23 Additional SW info added to Access  
A. 17.02.23 Revised for Submission  
Ref. Date Revision

Ensure all dimensions are checked on site prior to ordering of prefabricated elements. Ensure minimum site room requirements are met for all staircases.  
Do not scale from this or any other drawing. Any discrepancies, contact the issuer.  
This drawing or any of its contents cannot be used except with the express written permission of the issuer. Without such permission no responsibility is taken for its content.

**ROBERTS.MOLLOY ASSOCIATES**  
architects and consultants

3 church lane  
bressingham diss  
norfolk  
IP22 2AE

**ROBERTS MOLLOY ASSOCIATES ©**  
Tel: 01379 687705  
E-mail: info@robertsmolloy.co.uk

**PROJECT:**  
LAND AT BUMBLEDOWN  
WICKHAM SKETH

**TITLE:**  
2no. BUNGALOWS - S73 APPLICATION  
BLOCK PLAN & LANDSCAPING

Scale: 1:200@A1 Date: 01.23

JOB No. WSO DRG No. 19B